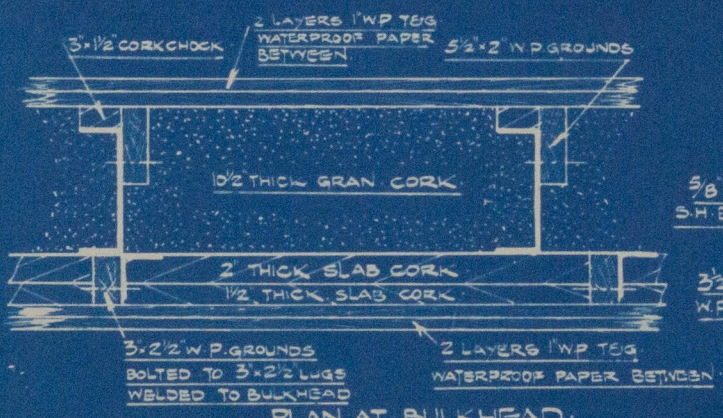
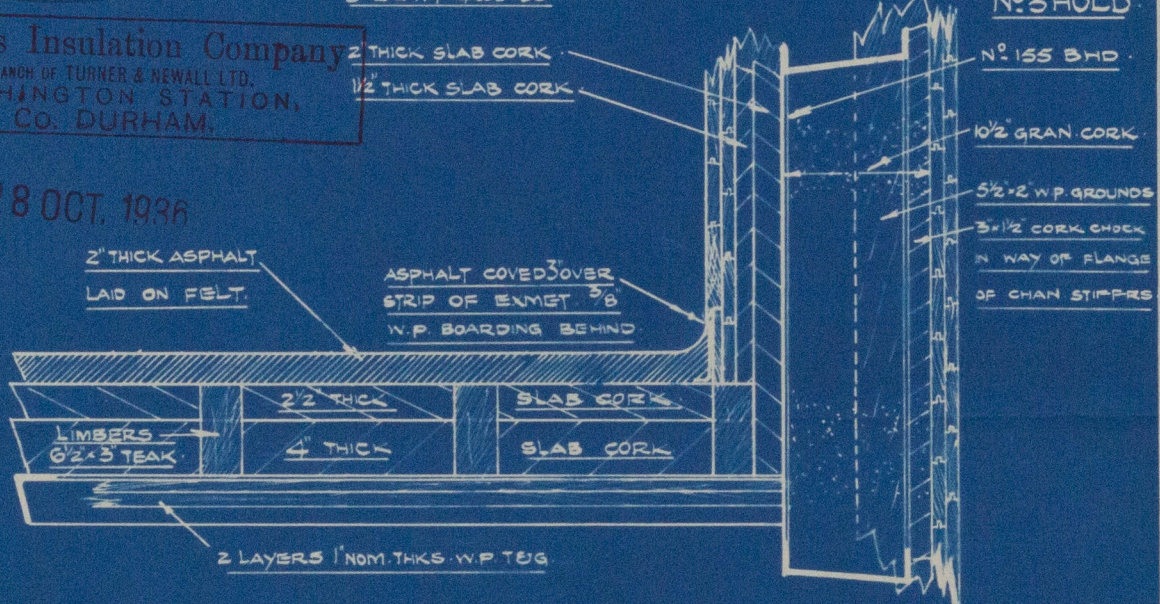
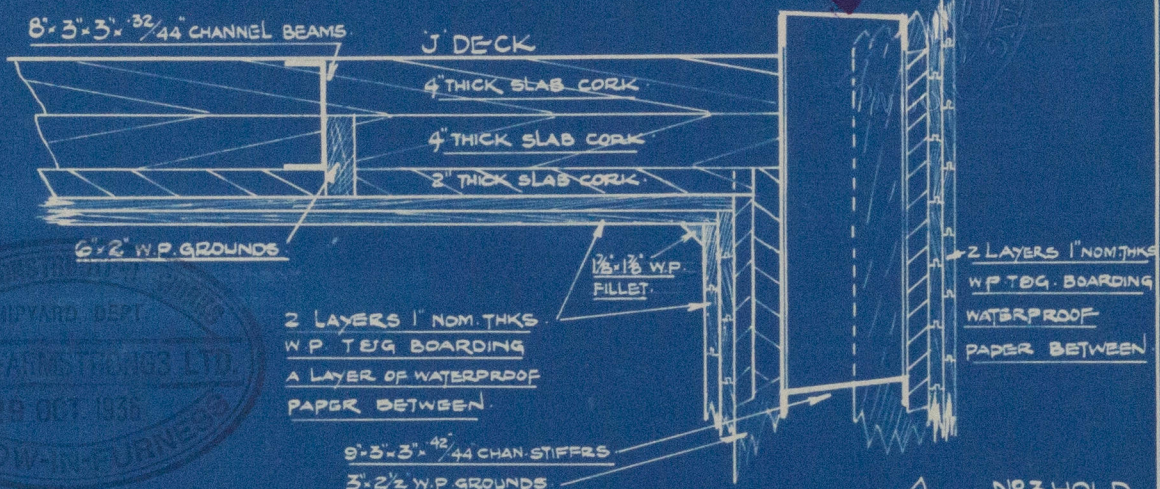
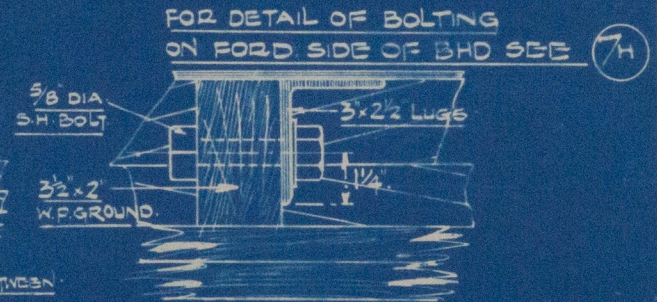


Newalls Insulation Company
 BRANCH OF TURNER & NEWALL LTD.
 WASHINGTON STATION,
 CO. DURHAM.

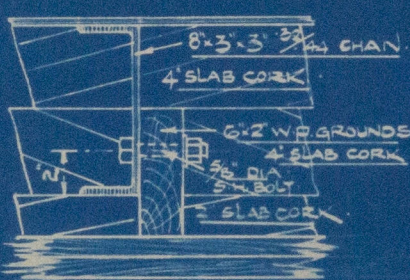
28 OCT. 1936



PLAN AT BULKHEAD



DETAIL OF BHD. BOLTING



DETAIL OF OVERHEAD BOLTING

INSULATION DETAILS (1E)
155 BHD. DECK & OVERHEADING
IN EVAPORATOR ROOM

SCALE: 1 1/2" = 1 FOOT

4-11-36

VICKERS ARMSTRONGS

NO 712



(3)



© 2020

Lloyd's Register
Foundation

W1122-0012