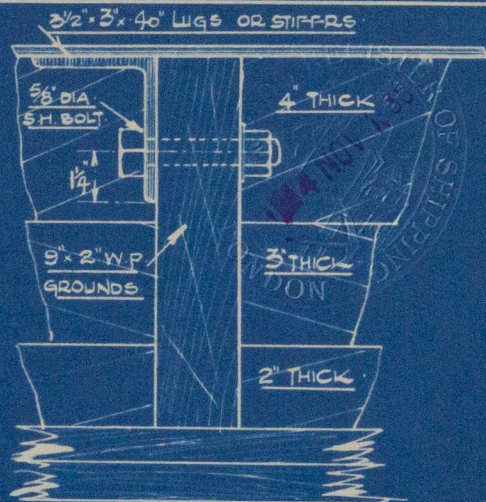
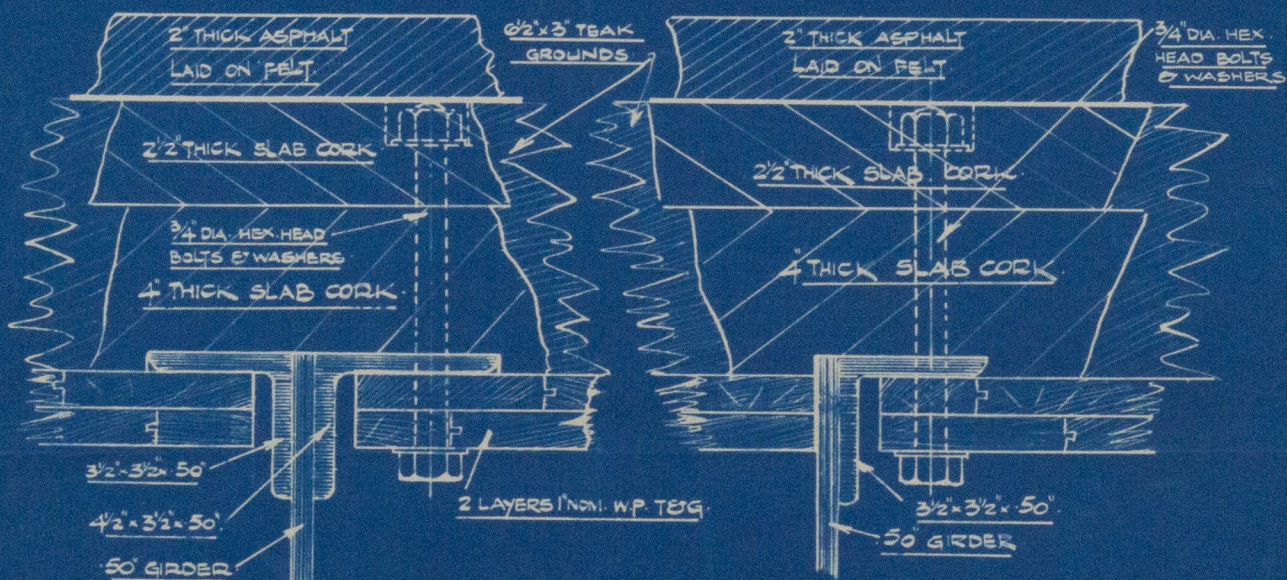


PLAN AT SIDE BULKHEADS  
IN WAY OF WING TANK.



DETAIL OF BOLTING.



2 LAYERS 1" NOM. THKS. W.P. T&G. BOARDING  
W.P. PAPER BETWEEN

ASPHALT COVERED OVER  
STRIP OF EXMET. 3/8" W.P.  
BOARDING BEHIND

Newalls Insulation Company

BRANCH OF TURNER & NEWALL LTD.  
WASHINGTON STATION,  
CO. DURHAM.

28 OCT. 1936

BOLTING DETAILS OF  
FLOOR OF EVAPORATOR  
ROOM.

2 LAYERS 1" NOM. THKS. W.P. T&G. BOARDING

6" x 3" x 50" ANGLE TO TAKE FLOOR

3/4" DIA. HEX. HEAD BOLTS & WASHERS

WING TANK BULKHEAD

INSULATION DETAILS (3E)

SIDE BULKHEADS & FLOOR IN EVAPORATOR ROOM.

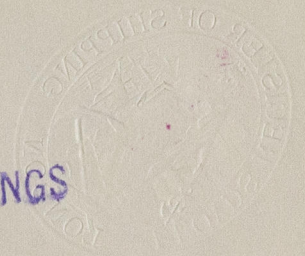
SCALE: 1" & 3" = 1 FOOT

CONT. NO. N/1564/MC.

SHIP NO. 712



VICKERS ARMSTRONGS  
NO 712



(3)



© 2020

Lloyd's Register  
Foundation

W1122-0011