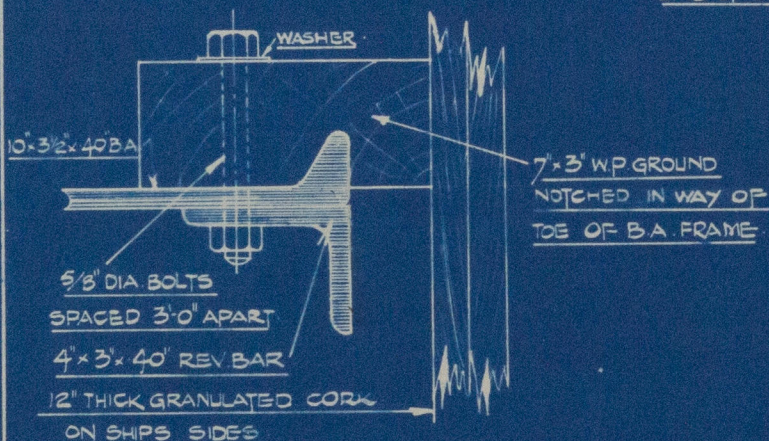
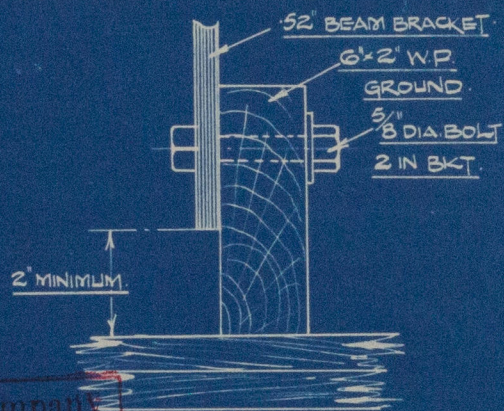


DETAIL OF OVERHEAD BOLTING



DETAIL OF FRAME BOLTING



DETAIL OF BKT. BOLTING

# INSULATION DETAILS (14)

SHIPSIDE & UNDERSIDE OF 'H' DECK IN HOLD FR 155 TO 186

SCALE: 1" = 1 FOOT.  
3" = 1 FOOT.

Turner & Newall's Insulation Company  
BRANCH OF TURNER & NEWALL LTD.  
WASHINGTON STATION  
CO. DURHAM

4-11-36



VICKERS ARMSTRONGS  
NO 712



(7)



© 2020

Lloyd's Register  
Foundation

W1122-0009