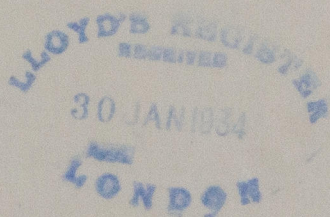


# Lloyd's Register of Shipping,

Empire House, Mount Stuart Square,

Cardiff, 29th. January 1934.



Dear Sir,

With reference to your enquiry form of the 15th. instant respecting the Steamer "CHISWICK MANOR", and our reply thereto, we beg to inform you that this vessel was placed on the Penarth Pontoon to-day, and upon enquiries being made regarding the completion of the Special Survey No.3 the Superintendent states The Drakelow S.S.Co.Ld., have now decided to transfer the classification of the vessel to the British Corporation.

We are, Dear Sir,

Yours faithfully,

The Surveyors,

per:- *Robt. Sheetham*

The Secretary.  
LONDON.



© 2020

Lloyd's Register  
Foundation

W1121-0150



