

PARTICULARS FOR FREEBOARD

Approx. Dimensions

Registered Length 325  
 » Breadth 48  
 » Depth 21.9  
 Approx. under Deck Tonnage 2820 Tons  
 Sheer at Stem 8' 10"  
 »  $\frac{1}{8}$  L From Stem 4' 10"  
 Sheer at Stern Post 4' 5"  
 »  $\frac{1}{8}$  L From Stern Post 2' 5"  
 Length of Poop 44 ft. Height 7' 9" beam to beam  
 Efficient Bulkhead at Fore end  
 Length of Bridge 198 ft x 7' 9" beam to beam  
 Efficient Bulkhead at Fore end  
 Do Do aft with battening arrangement  
 Forecastle 37' 0" x 7' 9" beam to beam  
 Bulkhead at aft end

# MIDSHIP SECTION OF SCREW STEAMER CLASS 100 ALLLOYS

CANTIERE NAVALE DI MUGLIANO  
 SOCIETA' DI SPEZIA  
 Disegno N. 184  
 Data 23 Aprile 03

3 OK RULE 1 DECK LAID

(With compensation)

Scala 1:25

194

Principal Dimensions

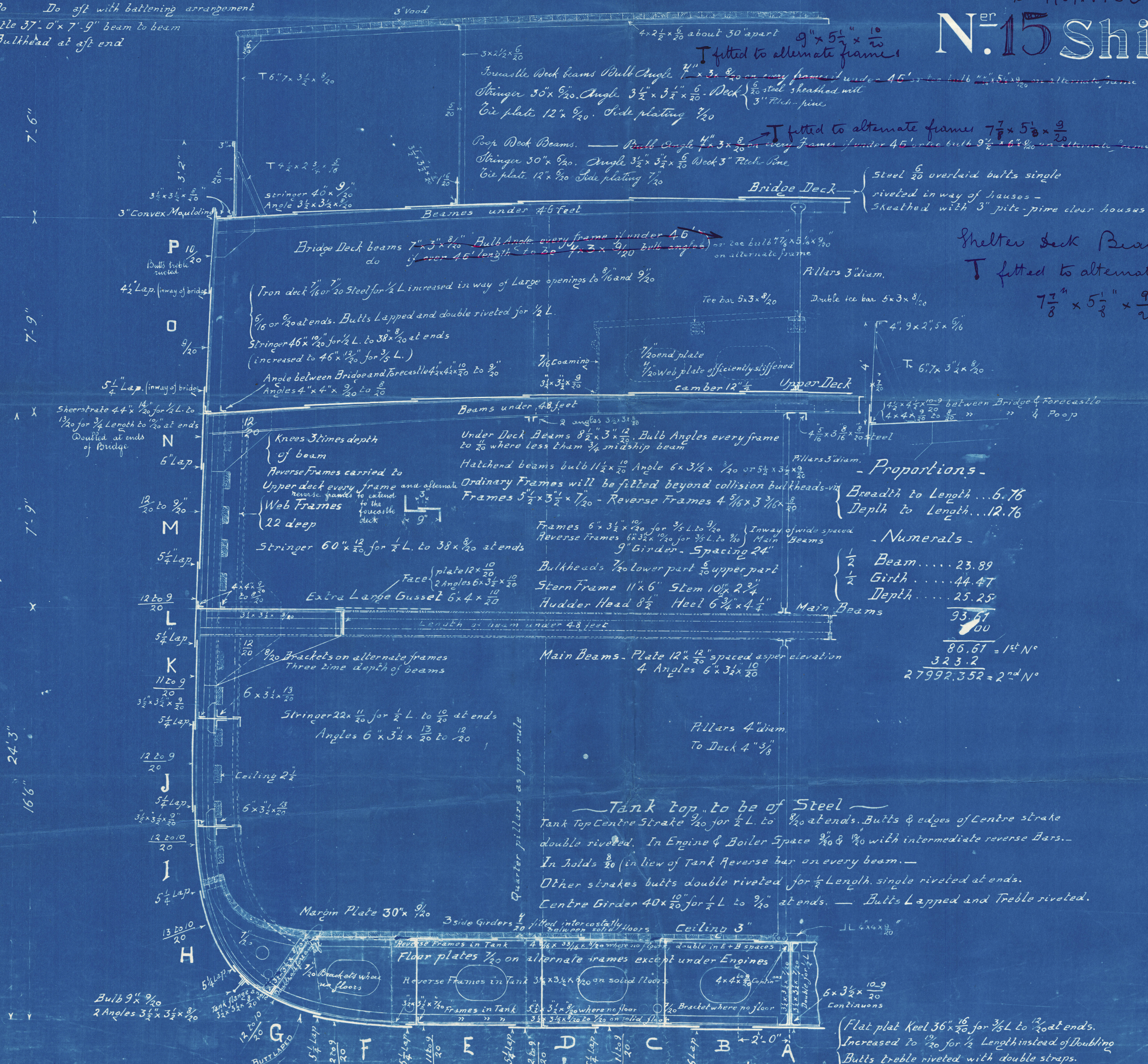
Length between Perps 325.0  
 Breadth Extreme 48.0  
 Depth Moulded 24.3

EQUIPMENT N° 34036

2 Bower Anchors (stockless) 4 1/2 cwt  
 1 » » Rodgers (ex stock) 3 1/4 »  
 1 Steam Anchor (ex stock) 11 1/2 »  
 1 Kedg " " " 5 1/4 »  
 270 fathoms 2" stud Chain Cable  
 90 " 1 3/8 stream chain  
 120 " 4" steel Wire hawser  
 90 " 10 Manila or 3 1/4" steel hawser  
 90 " 8 1/2" " or 3" " "

S.S. "MONVISO"

N<sup>ER</sup> 15 Ship



Proportions

Breadth to Length 6.76  
 Depth to Length 12.76

Numerals

1/2 Beam 23.89  
 1/2 Girth 44.47  
 Depth 25.25

93.67  
 86.67 = 1<sup>st</sup> N°  
 323.2  
 27992.352 = 2<sup>nd</sup> N°

Tank top to be of Steel

Tank Top Centre Strake 1/20 for 1/2 L. to 1/20 at ends. Butts & edges of Centre strake double riveted. In Engine & Boiler Space 1/20 & 1/20 with intermediate reverse Bars. In Holds 1/20 (in lieu of Tank Reverse bar on every beam). Other strakes butts double riveted for 1/2 Length, single riveted at ends. Centre Girder 40 x 10 for 1/2 L. to 1/20 at ends. Butts Lapped and Treble riveted.

Riveting - Butts of strakes A to M also Butts of Upper & Main Deck Stringer plates to be lapped and treble riveted all fore & aft. (3 complete rows of rivets). Butts of sheerstrake treble riveted for 1/2 L. double riveted at ends with straps 1/20 thicker for 1/2 L. and 3/40 thicker at ends.

Garboard strake 36 x 12 to 1/20 increased to 1/20 for 1/2 L. in lieu of Keel doubling





hors

Monviso

RETAIN



© 2020

Lloyd's Register  
Foundation

W1119-0155