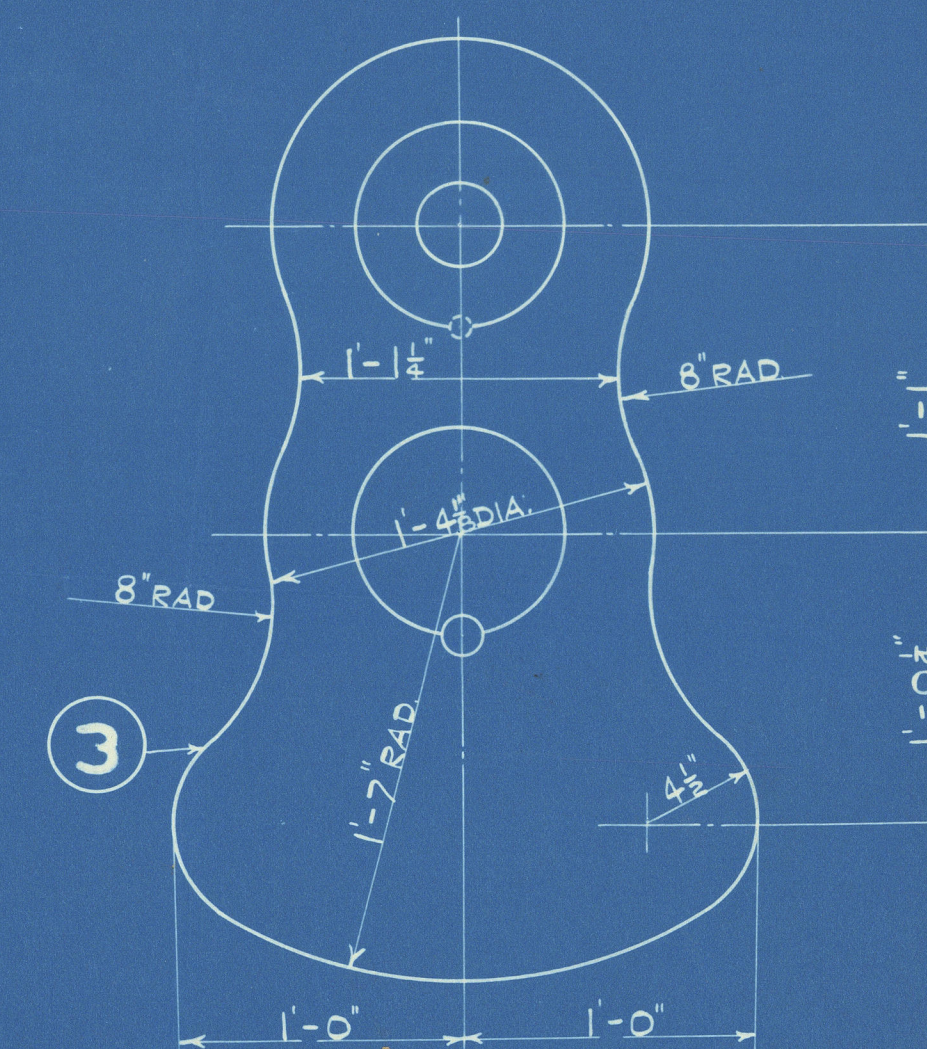
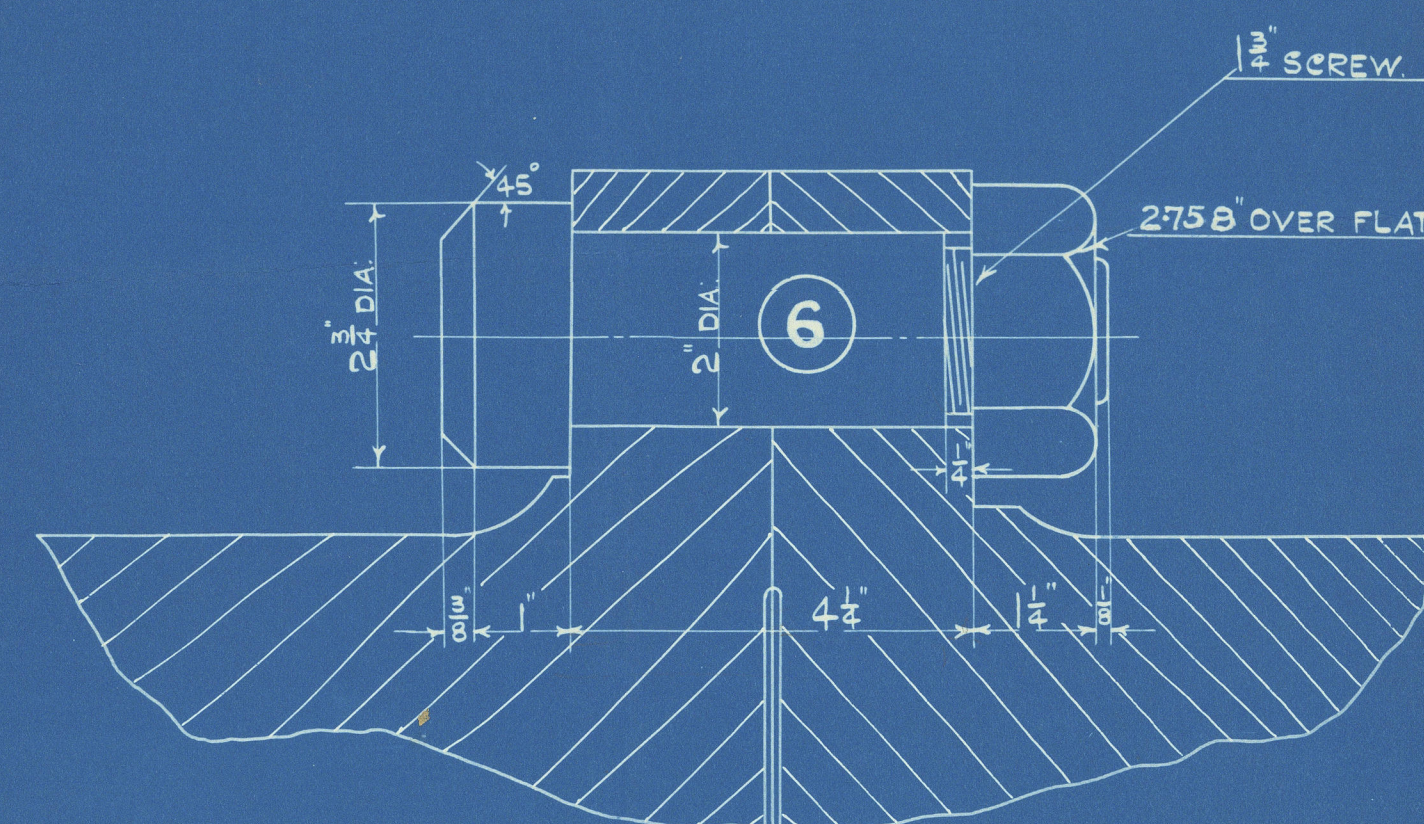
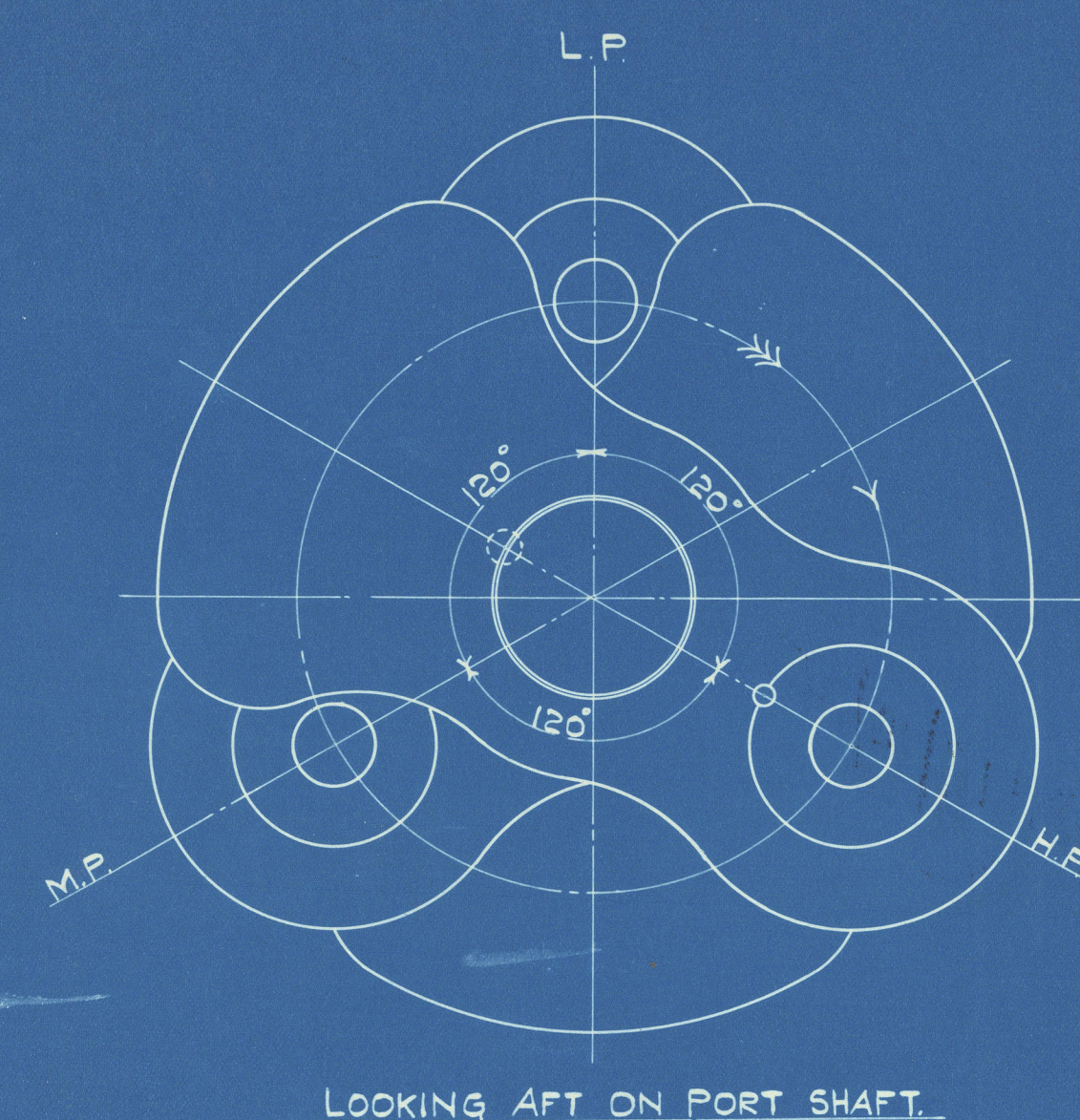
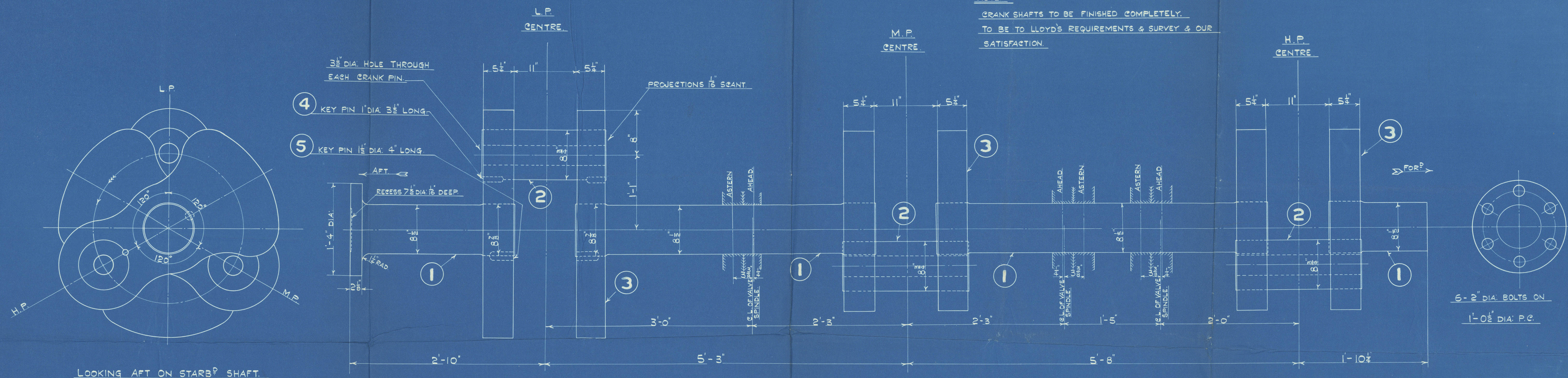


21/10/25

DIST <sup>g</sup> MARK	DESCRIPTION	N <sup>o</sup> REQ <sup>d</sup>	PORT	STAR <sup>b</sup>	SPARE	MATERIAL	MAKERS	JOB N <sup>o</sup>	COST INDEX	D.O. REMARKS
1	CRANK JOURNALS	4	4	-	-	INGOT STEEL		107/2		
2	" PINS	3	3	-	-	" "		107/3		
3	" WEBS	6	6	-	-	" "		107/4		
4	KEY PIN FOR CRANK PIN	6	6	-	-	" "		107/5		
5	" " " JOURNAL	6	6	-	-	" "		107/6		
6	COUPLING BOLTS & NUTS	6	6	-	-	STEEL W.I. NUTS	R & W.H.L. & CO	107/5		

NOTE:-

CRANK SHAFTS TO BE FINISHED COMPLETELY.  
TO BE TO LLOYD'S REQUIREMENTS & SURVEY & OUR  
SATISFACTION.



SIZE OF ENGINE 16"-26"-44"  
26"  
BOILER PRESSURE 200 LBS/SQ"

FOR 03  
21/10/25.  
21/10/25.



DRAWN BY  
CHECKED BY  
PASSED BY  
DATE 21/10/25

**DRAWING N<sup>o</sup> 10.**

**CRANK SHAFT.**

SCALES:- 1/2" = 1 FOOT & HALF SIZE.

**ENGINE N<sup>o</sup> 3645.**



La S<sup>e</sup> El Amir Farong

Report No. 80564.

RETAIL



W1118-0721