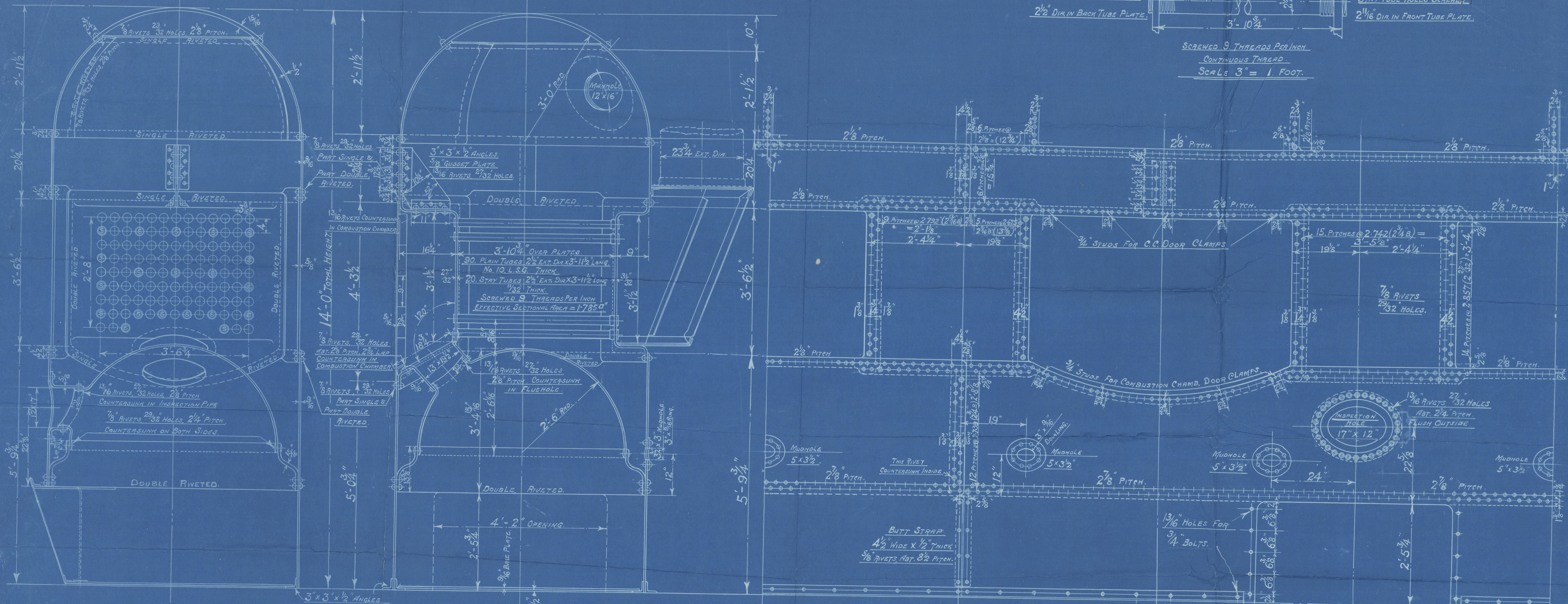
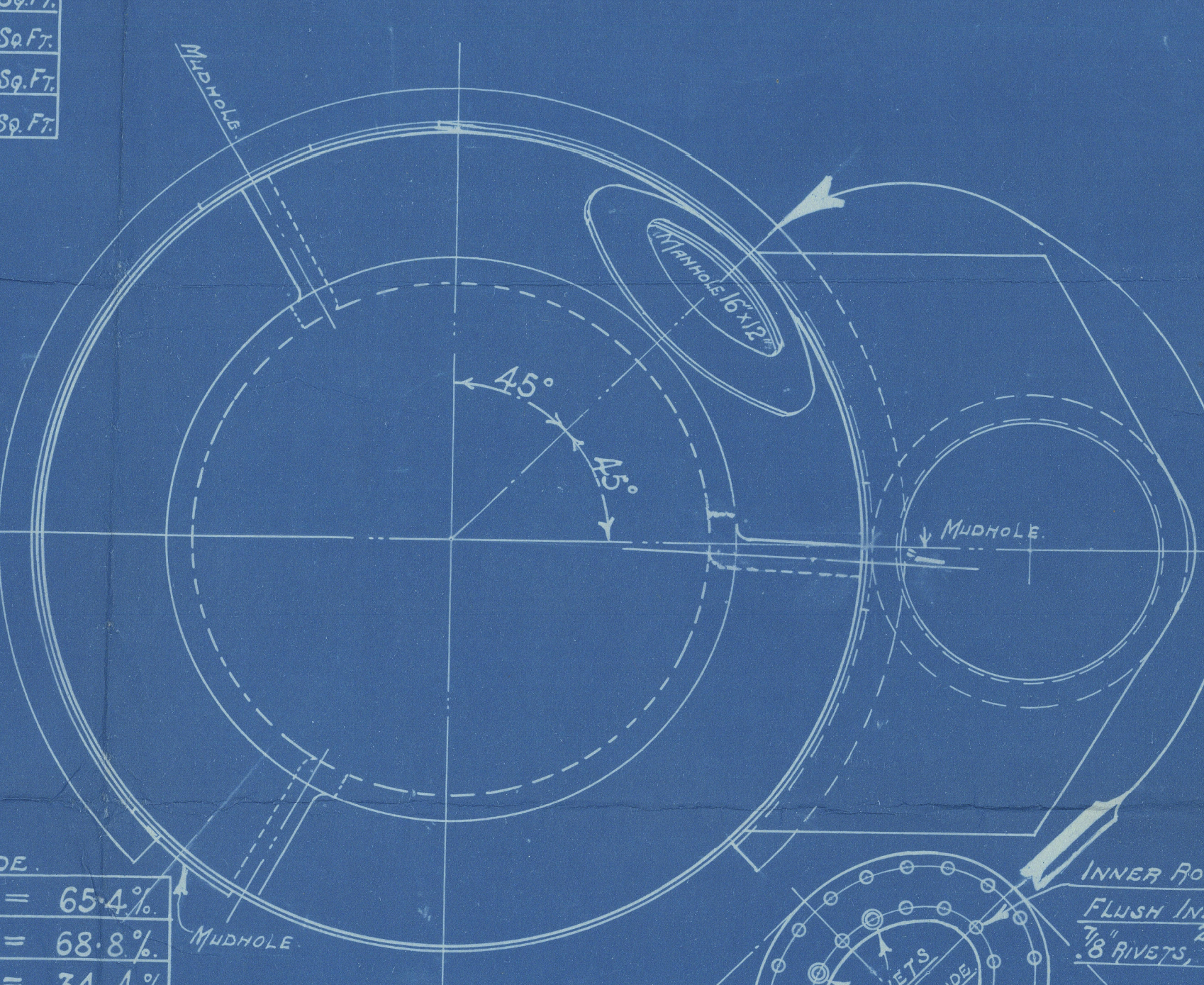
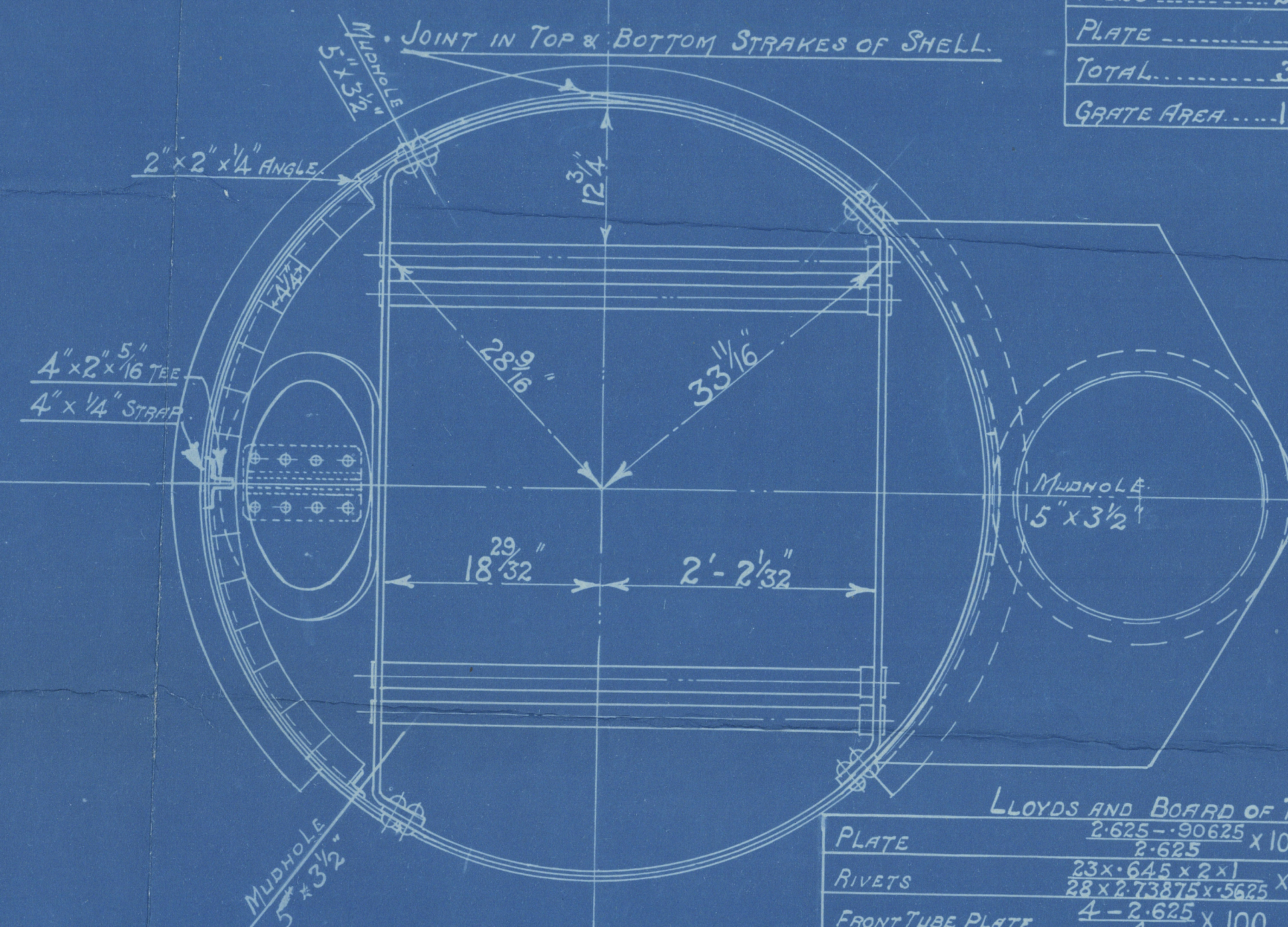
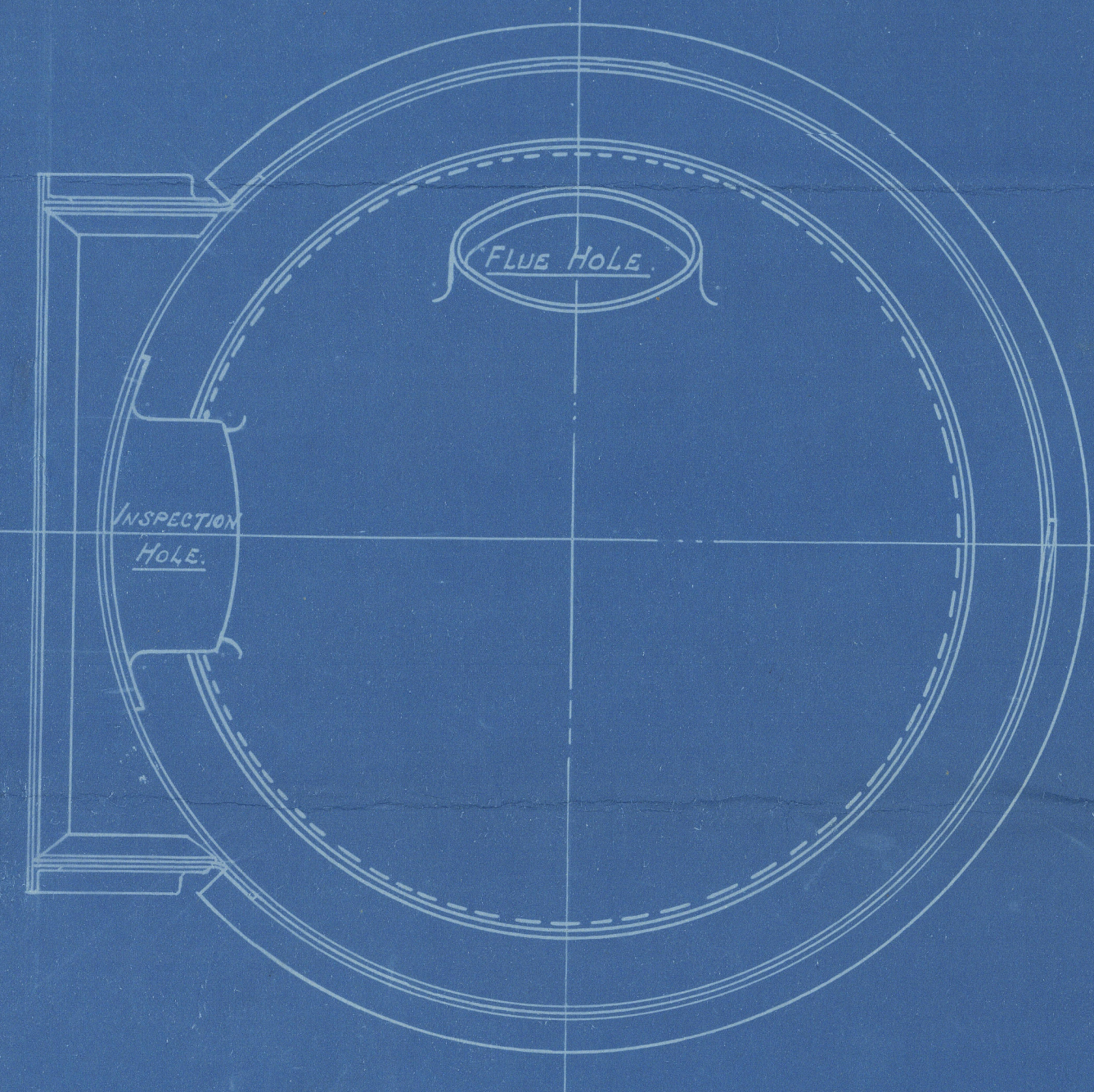


COCHRAN PATENT VERTICAL MULTITUBULAR BOILER

HORIZONTAL FLUE TUBES



HEATING SURFACE.	
TUBES	273 Sq. Ft.
PLATE	77 Sq. Ft.
TOTAL	350 Sq. Ft.
GRADE AREA	187 Sq. Ft.



LLOYDS AND BOARD OF TRADE.	
PLATE	2'-6 1/2" x 100" = 65.4%
RIVETS	23 x 16 1/2" x 2 1/2" = 68.8%
FRONT TUBE PLATE	4'-2" x 100" = 34.4%
BACK TUBE PLATE	4'-2" x 100" = 37.5%
SHELL	(18-2) x 28 x 65.4 = 140.2 LBS.
FRONT TUBE PLATE	(31-2) x 28 x 54.4 = 132.8 LBS.
BACK TUBE PLATE	(31-2) x 28 x 54.4 = 147.1 LBS.
FURNACE	275 (18-1) = 155.8 LBS.
ORGE RING	140 (30-1) = 136.2 LBS.

PATENT BOILER No 10020.

6'-0" x 14'-0" x 350# x 130 LBS W.P.

SCALE 1. INCH TO 1 FOOT.

SIEMENS MARTIN MILD STEEL PLATES

TENSILE TESTS

PLATES NOT EXPOSED TO FLAME OR FLANGED 28 TO 32 TONS.

PLATES EXPOSED TO FLAME OR FLANGED & RIVETS 26 TO 30 TONS.

N.R.

DRAWING No 14883.

SURVEY - LLOYDS & BOARD OF TRADE.

11178-0169

Cochran & Annan L^{td}.
Annan.

Boiler No. 10020

W.P. 130 lbs.

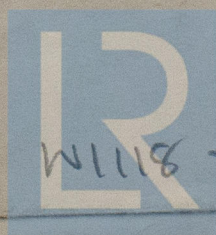
S.S. El Amir Farouq

GLASGOW REPORT No. 45553

S.S. EL AMIR FAROUQ

NEWCASTLE ON TYNE

Report No. 50564



© 2021

W1118 - 0169 Lloyd's Register
Foundation

543

Midship Section



© 2021

Lloyd's Register
Foundation