

T. S. S. "EL AMIR FAROUQ."

MIDSHIP SECTION.

EQUIPMENT NUMERALS.

SECOND LONGITUDINAL NUMERAL	=	12985
FORECASTLE = 60' 56" x 7' 5" x .75	=	539.47
CASING = 90' 1" x 7' 5" x .50	=	537.88
SALOON HOUSE = 25' 5" x 7' 5" x .50	=	88.15
		15750.48

EQUIPMENT LETTER 'O'.

EQUIPMENT.

2 BOWER ANCHORS 28 CWTs. EACH STOCKLESS.
1 BOWER ANCHOR 24 CWTs. STOCKLESS.
1 STREAM ANCHOR 7 CWTs. EX-STOCK.
240 FATHOMS 1 1/16" STUD CHAIN CABLE.
75 FATHOMS 5/8" STEEL WIRE ROPE - STREAM ANCHOR.
90 FATHOMS 5/8" STEEL WIRE ROPE - TOWLINE.
90 FATHOMS 6" HEMP - HAWSER.
90 FATHOMS 5" HEMP - WARP.

SCANTLING NUMERALS

D = 19'
FIRST LONGITUDINAL NUMERAL 245 x 19 = 4655.
SECOND LONGITUDINAL NUMERAL 245 x (54 + 19) = 12895.
7/D = 12.9 TO UPPER DECK.
α = 16.375.

SCALE 1/2" = 1 FOOT.

BUILT TO LLOYDS CLASS 100 A.I. WITH FREEBOARD.

DIMENSIONS:- LENGTH 245'-0" B.P.

BREADTH 34'-0" MOULDED.

DEPTH 19'-0" MOULDED.

ERECTIONS:- FORECASTLE 60' 56"

SHEERS:- FORWARD 27"

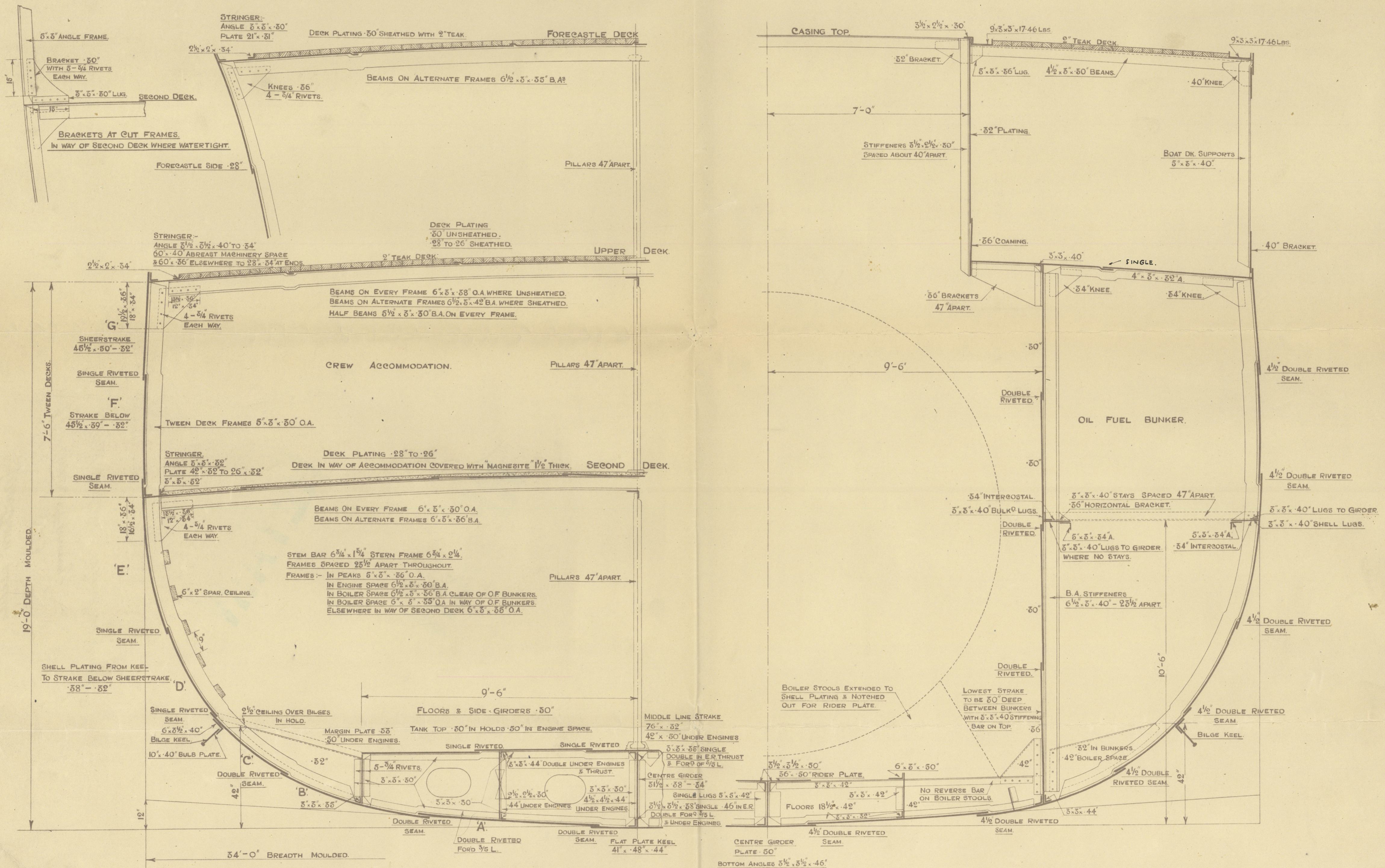
AFT 12"

1/8 L FORWARD 15"

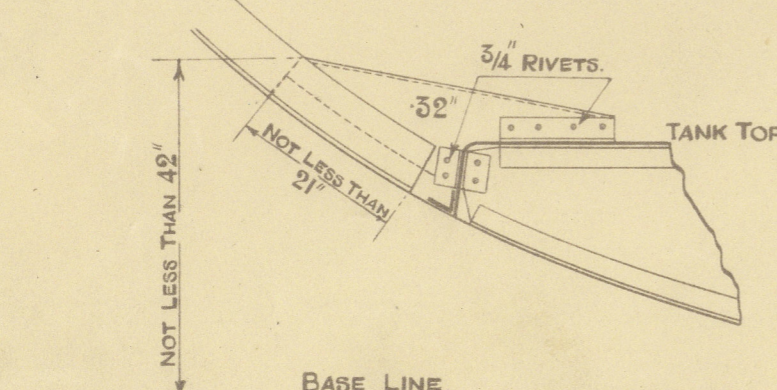
1/8 L AFT 6 1/2"

RIVETING LIST.

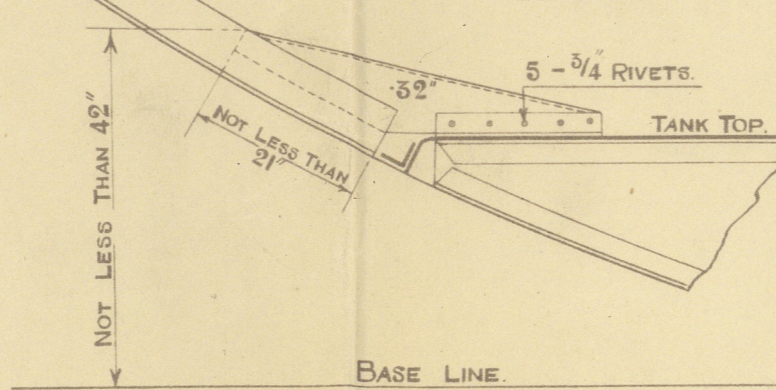
BUTTS OF UPPER DECK SHEERSTRAKE OVERLAPPED & TREBLE RIVETED FOR 1/2 L TO DOUBLE AT ENDS.
BUTTS OF 'F' STRAKE OVERLAPPED & TREBLE RIVETED FOR 1/2 L TO DOUBLE AT ENDS.
BUTTS OF 'E', 'D', 'C', 'B', & 'A' STRAKES OVERLAPPED & DOUBLE RIVETED ALL FORE & AFT.
BUTTS OF FLAT PLATE KEEL OVERLAPPED & TREBLE RIVETED ALL FORE & AFT.
BUTTS OF CENTRE GIRDER PLATE OVERLAPPED & DOUBLE RIVETED TREBLE RIVETED IN BOILER ROOM.
& QUADRUPLE RIVETED AT ENDS OF BOILER ROOM.
BUTTS OF UPPER DECK STRINGER OVERLAPPED & TREBLE RIVETED FOR 1/2 L TO DOUBLE AT ENDS.
BUTTS OF SECOND DECK STRINGER OVERLAPPED & DOUBLE RIVETED THROUGHOUT.
BUTTS OF MARGIN PLATES OVERLAPPED & DOUBLE RIVETED THROUGHOUT.
BUTTS OF MIDDLE LINE STRAKE OF TANK TOP OVERLAPPED & DOUBLE RIVETED THROUGHOUT.
BUTTS OF RIDER PLATE IN BOILER ROOM OVERLAPPED & TREBLE RIVETED THROUGHOUT.
BUTTS OF INNER BOTTOM PLATING OVERLAPPED & DOUBLE RIVETED THROUGHOUT.
BUTTS OF FORECASTLE DECK STRINGER OVERLAPPED & DOUBLE RIVETED.
BUTTS OF FORECASTLE DECK PLATING OVERLAPPED & SINGLE RIVETED.
BUTTS OF UPPER DECK PLATING OVERLAPPED & DOUBLE RIVETED FOR 1/2 L TO SINGLE AT ENDS.
BUTTS OF SECOND DECK PLATING OVERLAPPED & SINGLE RIVETED THROUGHOUT.
SEAMS OF SHELL PLATING TO UPPER TURN OF BILGE SINGLE RIVETED ALL FORE & AFT EXCEPT IN WAY OF OIL FUEL BUNKERS WHERE DOUBLE RIVETED.
SEAMS OF SHELL PLATING TO LOWER TURN OF BILGE DOUBLE RIVETED ALL FORE & AFT.
SEAMS OF FORECASTLE DECK PLATING SINGLE RIVETED THROUGHOUT.
SEAMS OF UPPER DECK PLATING SINGLE RIVETED ALL FORE & AFT.
SEAMS OF SECOND DECK PLATING SINGLE RIVETED THROUGHOUT.
SEAMS OF INNER BOTTOM PLATING SINGLE RIVETED THROUGHOUT.
RIVETS THROUGH FRAMES TO SHELL IN WAY OF OIL FUEL BUNKERS, AFTER PEAK, FORE PEAK & BOTTOM FORWARD OF 5/8 L FORWARD SPACED 5 1/2 DIAS. APART. ELSEWHERE SPACED 7 DIAS. APART.
RIVETS THROUGH FRAMES & FLOORS FORWARD OF 5/8 L FORWARD SPACED 5 1/2 DIAS. APART.
RIVETS CONNECTING BEAMS TO FORECASTLE DECK PLATING 6 DIAS. APART. TO UPPER DECK PLATING, FRAMES A TO 57 & 75 TO 122 INCLUSIVE SPACED 6 DIAS. APART. ELSEWHERE 7 DIAS. APART. TO SECOND DECK PLATING 7 DIAS. IN WAY OF WT. FLATS & 6 DIAS. ELSEWHERE.
SEVEN 3/4 DIAS RIVETS IN SEAMS OF SHELL PLATING BETWEEN FRAMES AMIDSHIPS, EXCLUDING RIVETS IN FRAMES.



SECTION THROUGH TANK SIDE
ABOUT NO 47 & NO 76 FRAMES.



SECTION THROUGH TANK SIDE
ABOUT NO 40 & NO 76 FRAMES.



ENCLOSURE TO

FROM R. & W. HAWTHORN, LESLIE & CO. LTD.,
HEBBURN-ON-TYNE.

10 AUG 1926
1482
NEWCASTLE-ON-TYNE

Lloyd's Register
Foundation

Hawthorn Leslie's

543

"El Amir Farouq"

Mid Section - Vessel as built

RETAIN

RETAIN



© 2021

Lloyd's Register
W1118-0168
Foundation