

MIDSHIP SECTION

No 162 SHIP

3.3.08

22.5.08

4.6.08

18.6.08

SCALE 1/2" = 1 FOOT

TO CLASS 100A1 AT LLOYDS - SHELTER DE
300'-0" x 42'-0" EX x 21'-3" TO MAIN DECK

Approx under-deck tonnage 1860

Dimensions (for Fairbank)

Sheer

300 - $\frac{42}{2}$ = 298	At Stem	4'-9"
	At 1/2 aft stem	2'-4 1/2"
	At 1/2 fwd of stem post	1'-0 1/2"
	At Stem post	1'-11"

Summers

2 Breadth	20.92
Depth	22.08
2 Draft	34.09
Length	82.09
	246.84
	246.84
	65.642
	438.81
	16.418
	24484.90
	2nd Number

$\frac{L}{D} = 13.5$

Add for Equipment

Shell deck 300 x 8 1/2 = 3600

Deckhouses 53 x 4 1/2 = 394

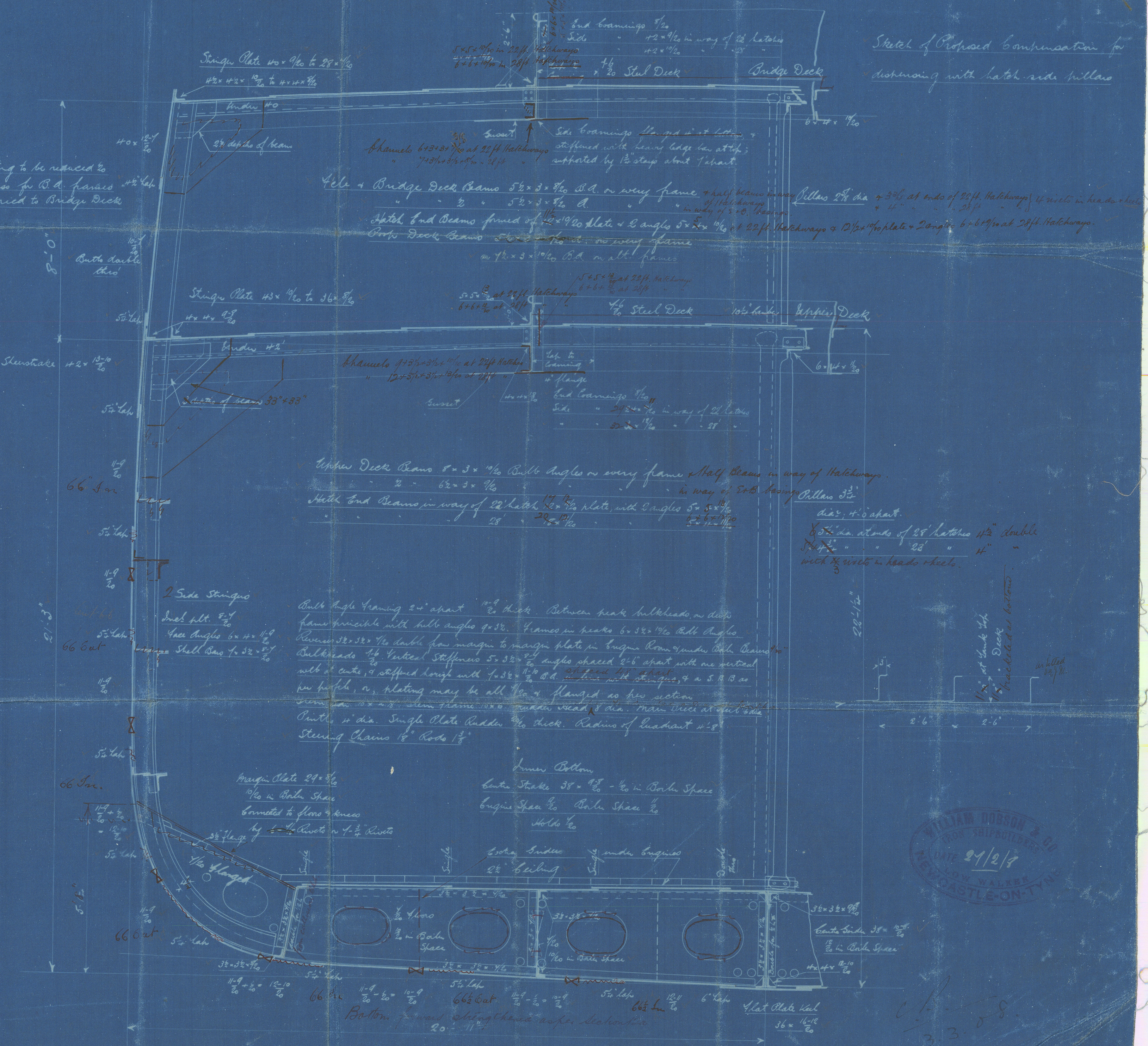
29,484 Equipment Number

Equipment

2 Bower Anchors	42	Butt Stock
1 Stream	11	3. stock
1 Ridge	5 1/2	
240 4ms	1 1/4	Steel Chain Cable
60	1 1/4	
60	12	60r
90	4	Steel Wire Hawser
90	3 1/2	
2 90	2 1/2	
90	8	Cravilla
6-90	6	

Riveting

All butts overlapped. Line of shell to be riveted through, except where over rule width, where they are quadruple for 2 1/2". Butts of Centre Keelson to be riveted for 3/4 L, double at ends. Butts of Main Deck Stringer to be riveted for 2 L, double at ends. Butts of Tank Top Centre Stakes margin plates double then Bridge Stakes stringer butts to be riveted for 2 L, double at ends. Butts of Tank Top and Main & Bridge Deck plating double for 2 L, single at ends.



Sketch of Proposed Compensation for distortion with hatch side pillars

WILLIAM DOBSON & CO
SHIPBUILDERS
1908
NEWCASTLE-ON-TYNE

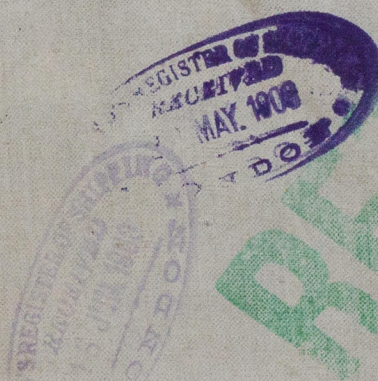
W1116-0162

Messrs. W. Dobson & Co.
No. 162
Midship Section

% Jacques Schiaffino

ex (Roi Leopold)

N^o. 56019



RETAIR

RETAIR



© 2020

Lloyd's Register
Foundation