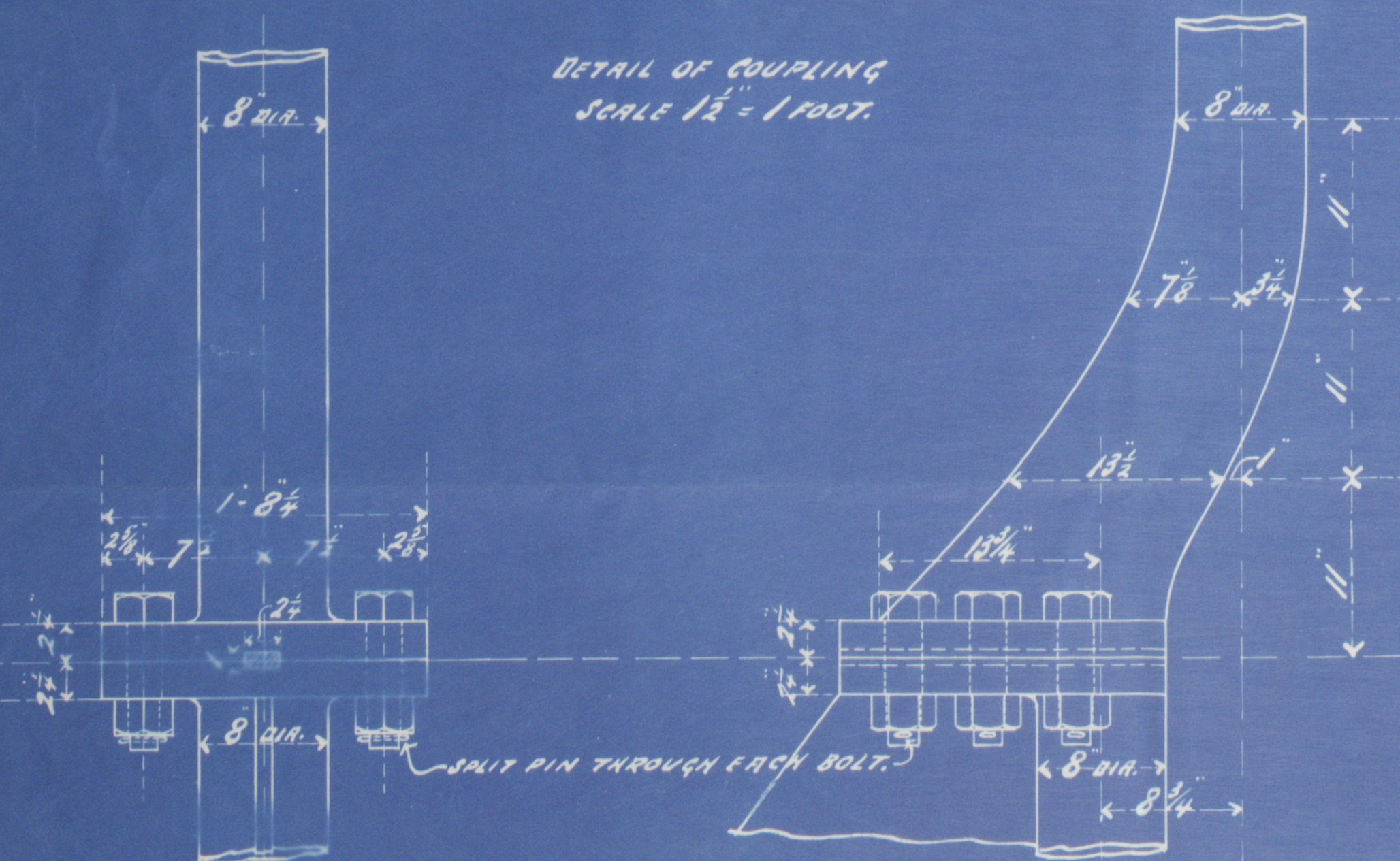


S. S. N^o 490.

$A = 112.2 \times D = 2.97 = 333.23$
SPEED = UNDER 10 KNOTS.

DETAIL OF COUPLING
SCALE $1\frac{1}{2}'' = 1$ FOOT.

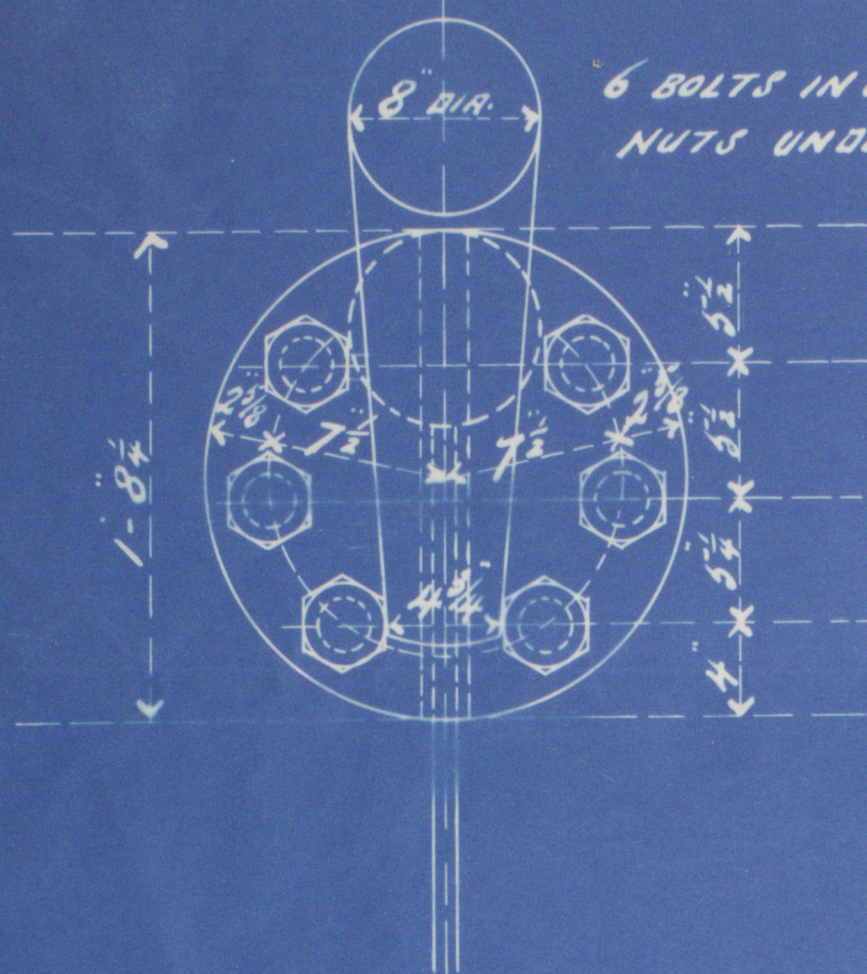


SECTION SHEWING GROOVE FOR TILLER KEY
TO BE ACCURATELY CUT AS SHEWING, CENTRE OF
KEYWAY EXACTLY ON FORE & AFT LINE.
KEYWAY 2" WIDE $\times \frac{1}{2}$ " DEEP.

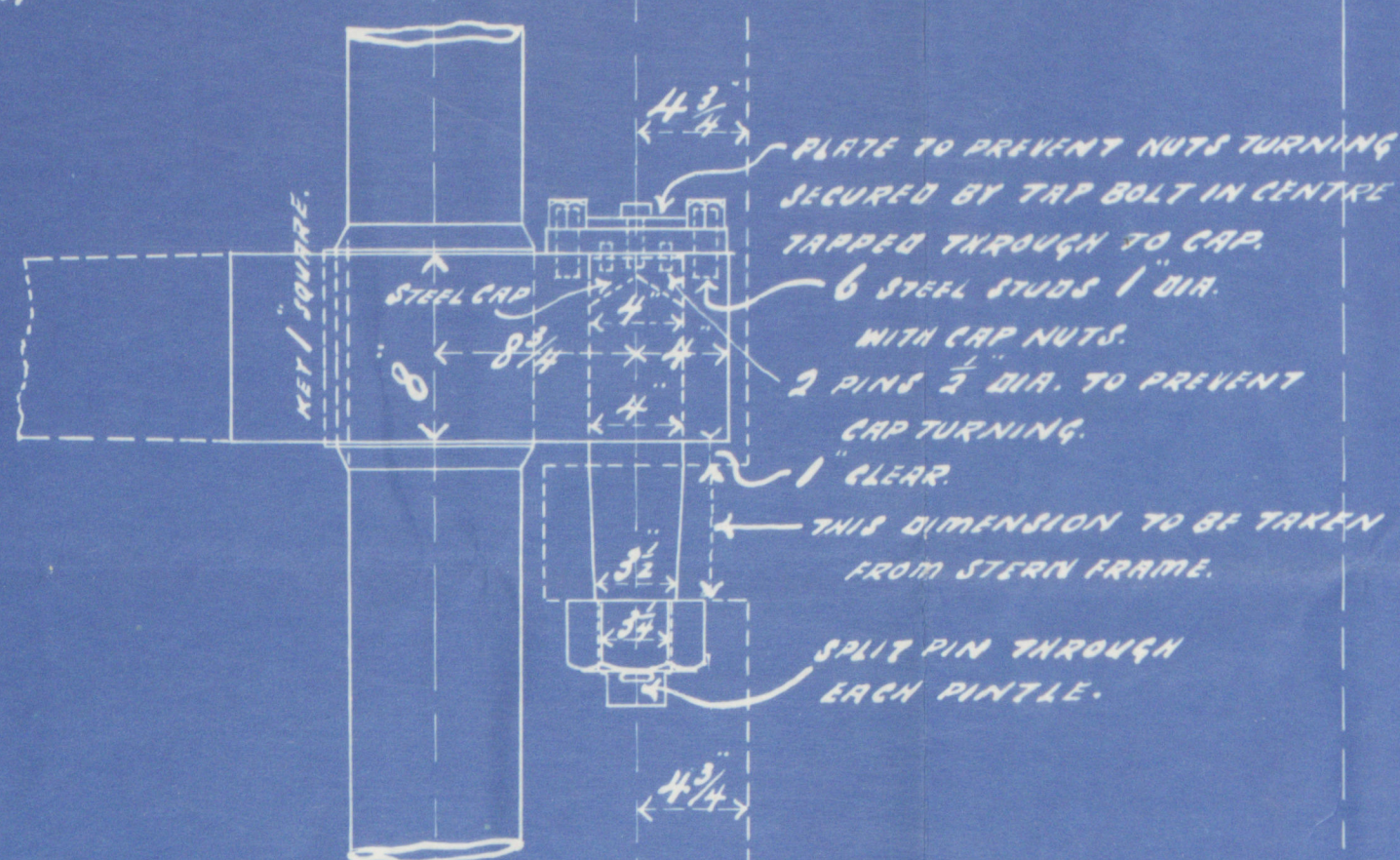
6 BOLTS IN COUPLING
2 1/4" DIA. NUTS UNDERSIDE.

EXTREME LENGTH = 38'-3"

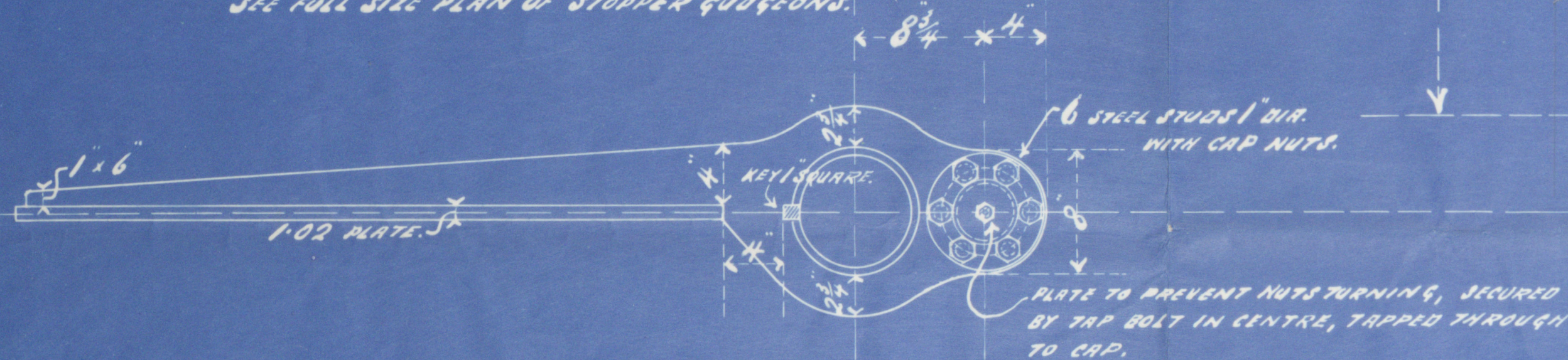
PLAN OF COUPLING.



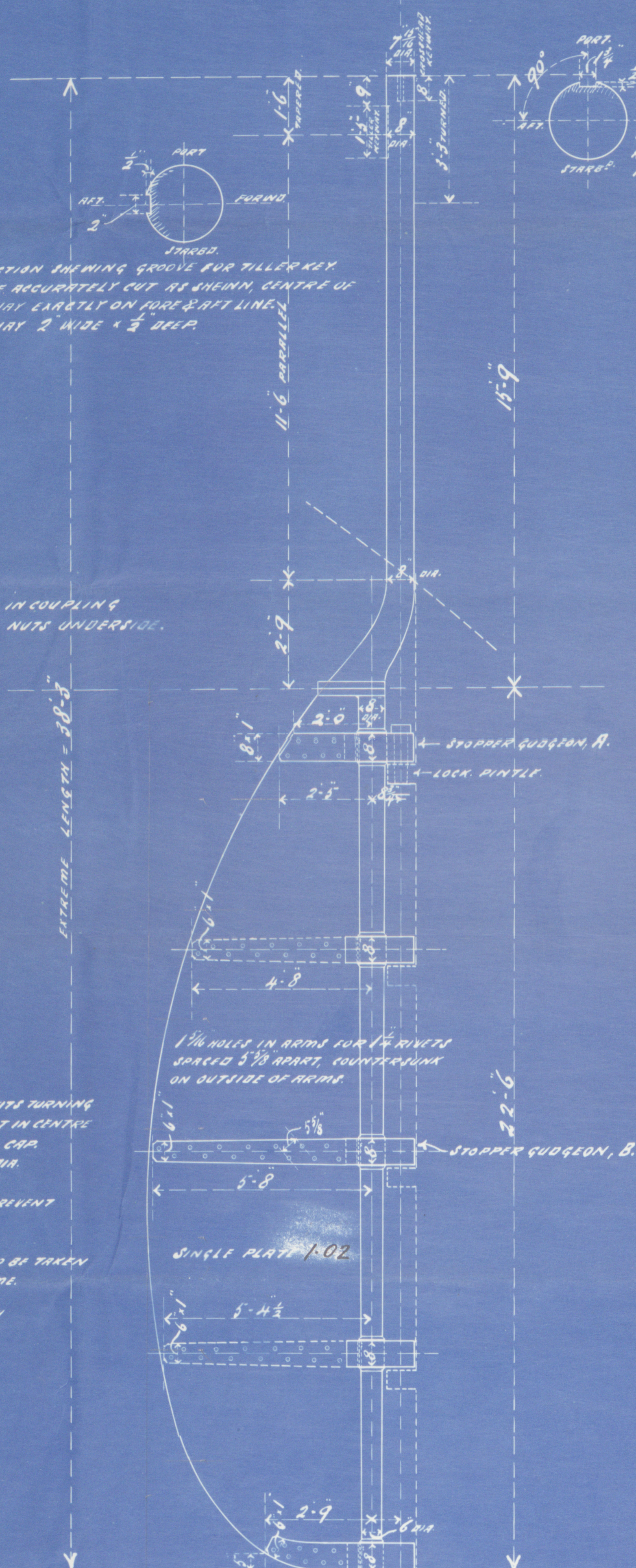
DETAIL OF ALL PINTLES
EXCEPT LOCK PINTLE.



PLAN VIEW OF LEFT HANDED ARMS.
SEE FULL SIZE PLAN OF STOPPER GUDGEONS.



SPOCING OF GUDGEONS TO BE TAKEN FROM STERN FRAME.
SEE FULL SIZE PLAN OF STOPPER GUDGEONS.



J. L. Thompson & Son

No 490

Built Rudder.

Frame.

S.S. "Shakespear"

Sld. Rpt. No. 25206



© 2021

Lloyd's Register
Foundation

W1112-0175