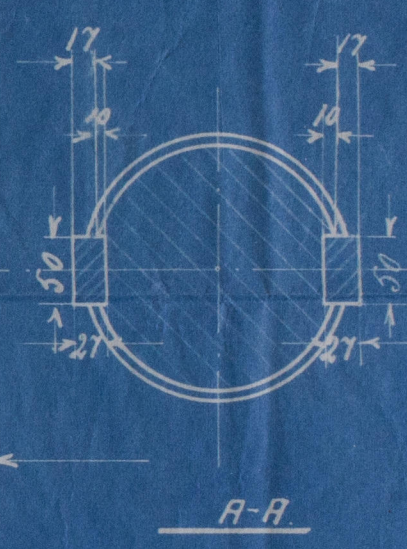
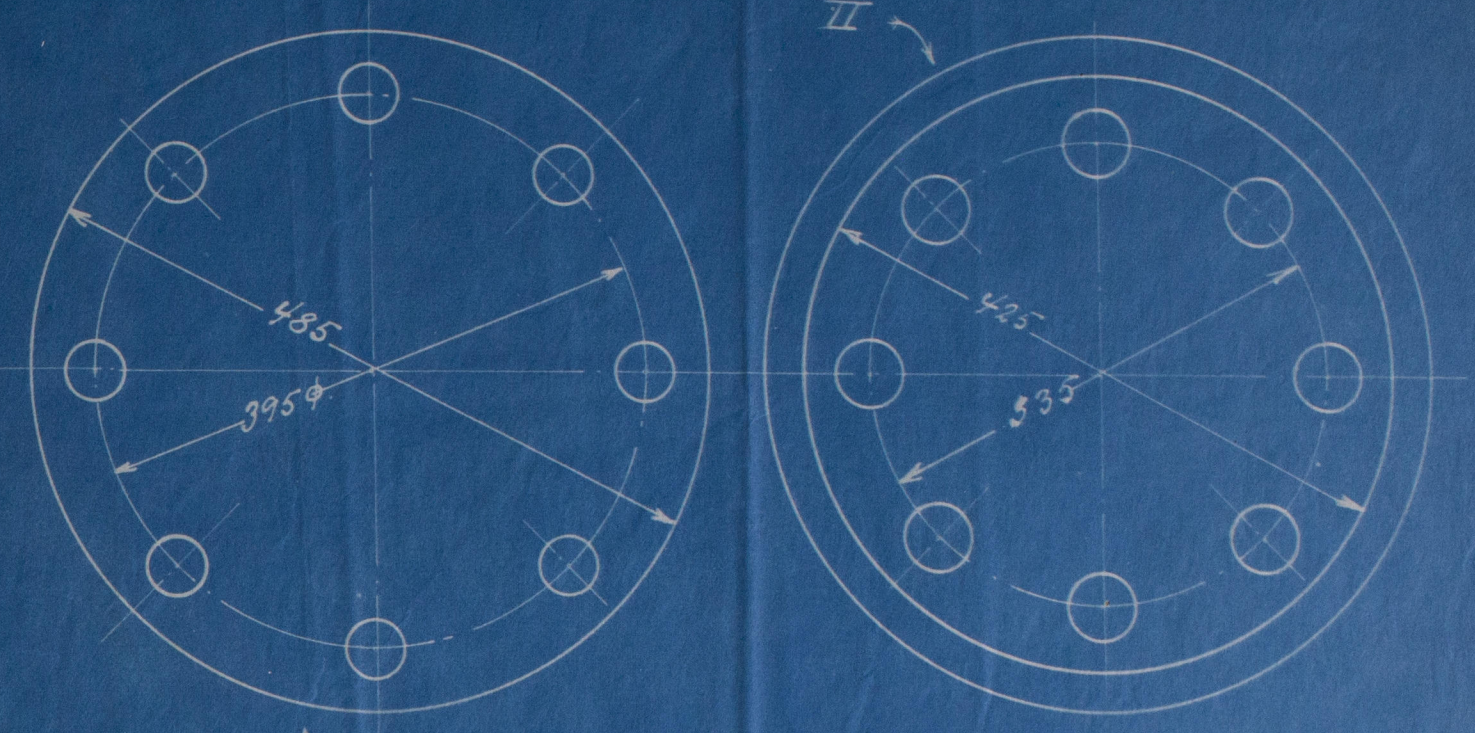
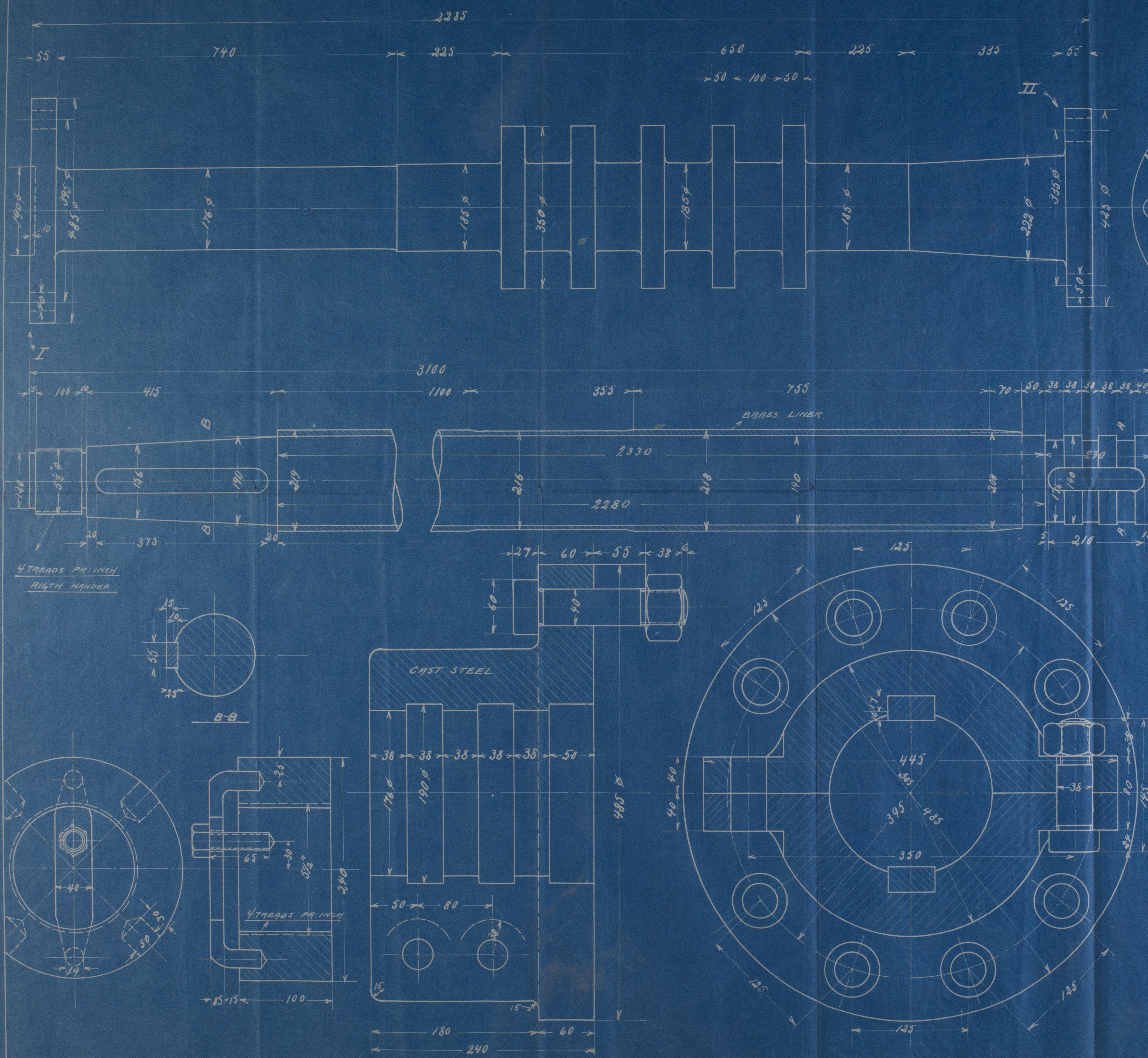


2/2/20



FOUR CYCLE SINGLE ACTING DIESEL ENGINE  
400 H.P. EFF.

DIAM. OF CYLINDER 370 mm.  
STROKE 570 mm.  
REVOLUTIONS PER MIN. 200  
Fly wheel is fitted.

AKTIESELSKABET  
HOLEBY DIESELMOTORFABRIK  
26/20 1/2

(conclusions Not more than 8 cyps  
propeller diam not exceeding  
2660 mm.)  
Ref 31/1/20

<p>1388</p>	<p>NAKSHOV SHIBSVERT BUILDING NO. 5</p> <p>THRUST- AND PROPELLER SHAFT COUPLING FOR PROPELLER SHAFT.</p> <p>SCALE: 1:5, 1:2, 5 MILLIMETER MEASURE</p> <p>9/5 HOLEBY DIESELMOTORFABRIK, HOLEBY</p> <p>26/20 1/2</p>
-------------	--



Plan of  
Thrust - shaft and  
Propeller - shaft with  
cast-steel flange coupling  
for the Diesel Oil Engine  
to be constructed by  
M/s Holby Motofabrik,  
Holby  
for Narskor Skibsværft's Yard No. 5.



m/s Virginia, Cpn. Rpt. No. 6244



© 2020

Lloyd's Register  
Foundation

W111-0203

Approved plan