

MIDSHIP SECTION. BUILDING No 5.

LENGTH BETWEEN PP = 170'-0"
BREADTH MOULDED = 31'-0"
DEPTH TO MAINDECK = 14'-3"
HEIGHT OF FORECASTLE = 6'-9"
POOPDECK = 7'-0"

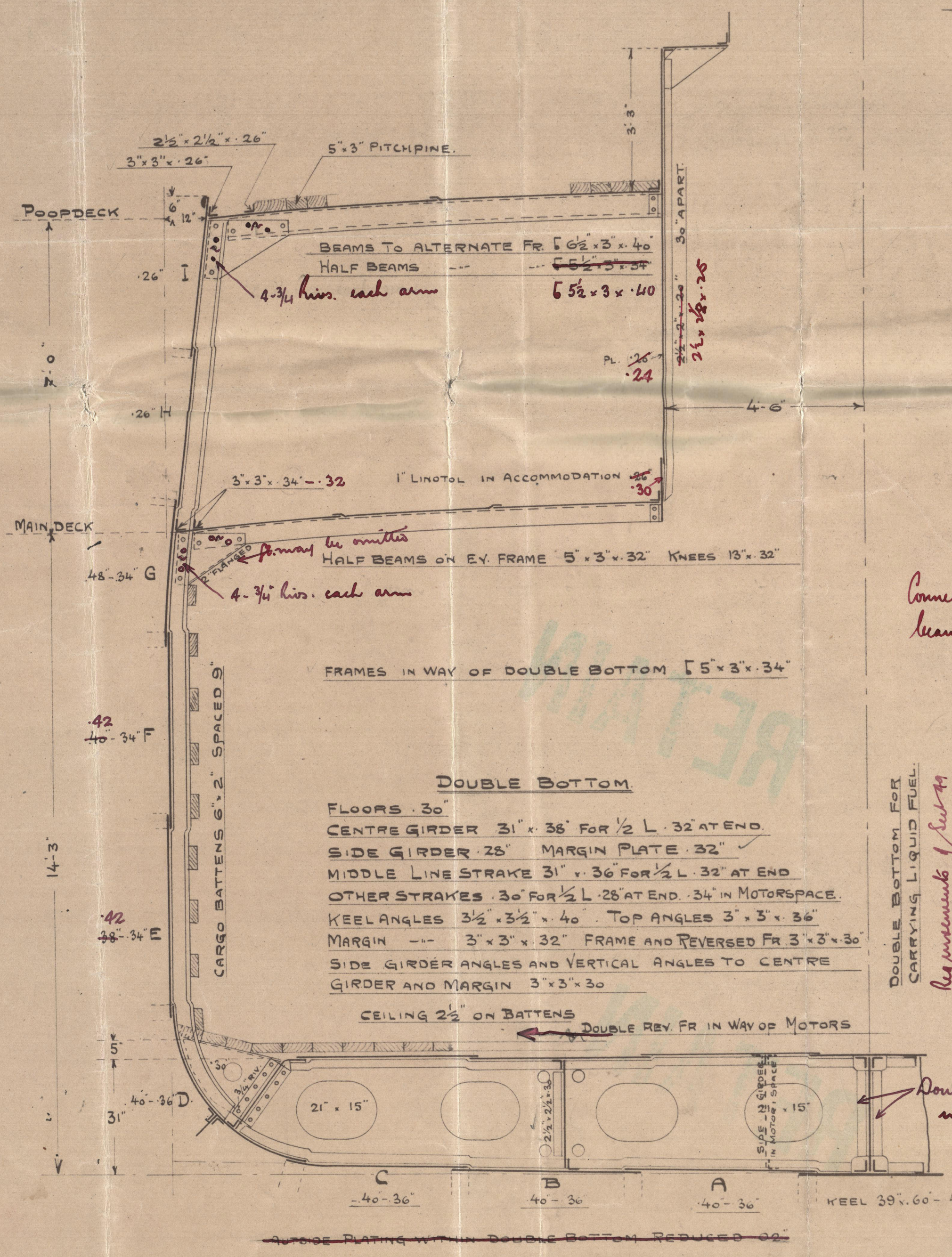
TO OBTAIN CLASS: BRITISH LLOYDS 100 A 1

$L \cdot (B+D) = 170(31+14.25) = 7692$
 $(B+D) = (31+14.25) = 45.25$
 $d = 12'-10"$ $L/D = 11.93$
 d IN WAY OF DOUBLE BOTTOM 11'-8"

SCALE $\frac{1}{2}'' = 1'-0''$

EQUIPMENT NUMBER	
$L \cdot (B+D)$	= 7692
POOP $0.75 \times 40 \times 7$	= 210
BACK $0.75 \times 37 \times 6.75$	= 188
	<u>8090</u>

2 PAT STOCKLESS BOWERS	WEIGHT EACH 14½ CWTs
1 ---	12¾ ---
1 ORD. STREAM ANCHOR INCL STOCK	5½ ---
1 --- KEDGE	2½ ---
195 FATHS 1⅜" STUD LINK CHAIN CABLES	141.016
75 --- 2¾" CIRC STEEL WIRE	
60 --- 3" ---	
90 --- 6" HAWSERS	

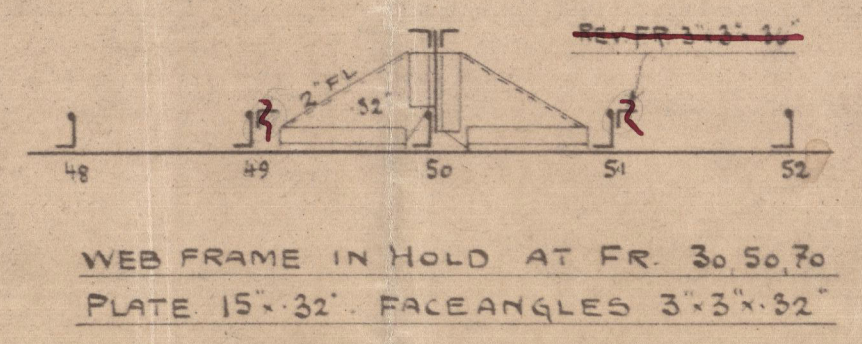
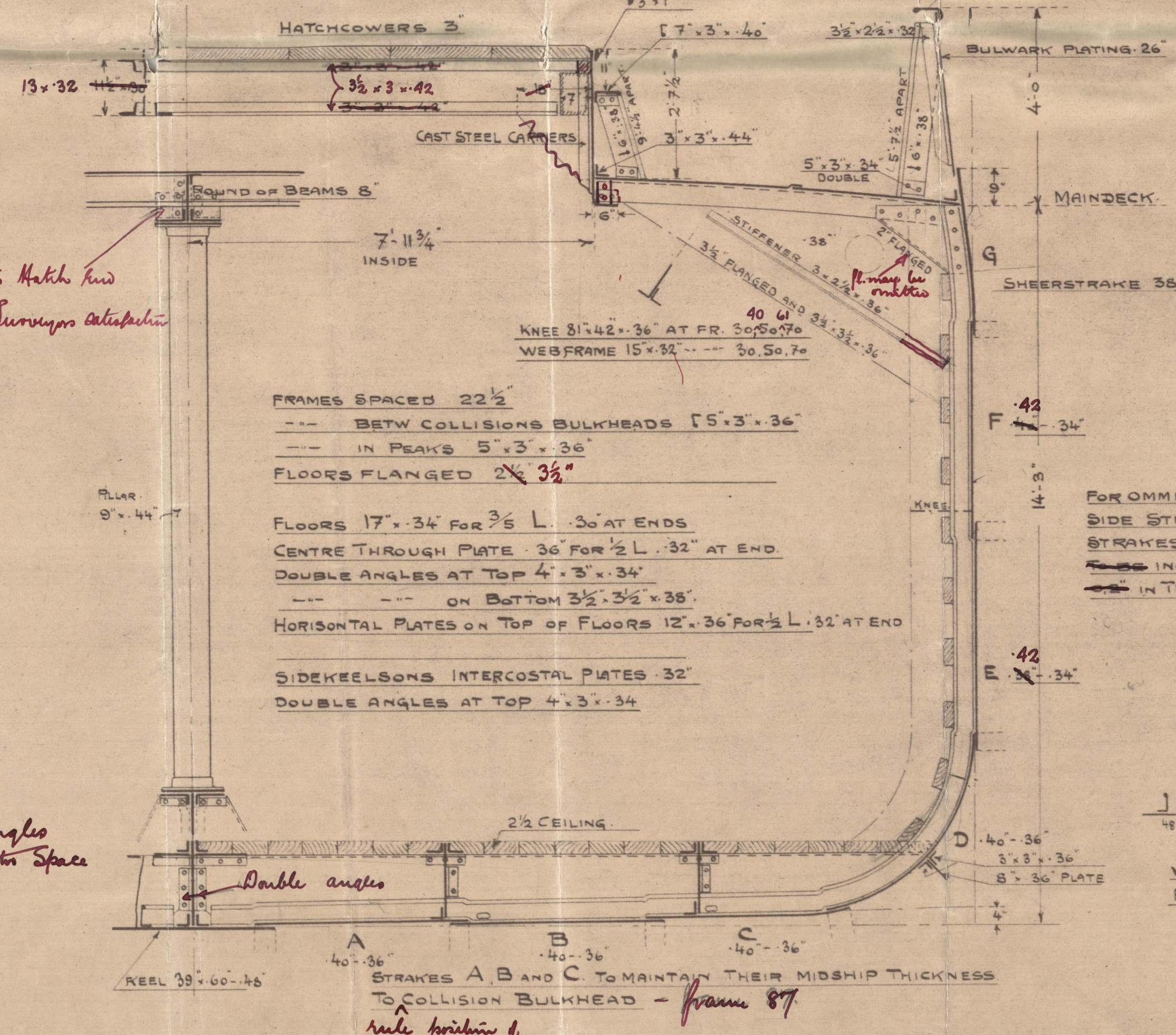


Connects to Hatch and beams to Survivors satisfaction

DOUBLE BOTTOM FOR CARRYING LIQUID FUEL. Requirements of Sub 44 to be complied with

Double angles in motor space

END HATCH COAMING 44
SIDE --- 48 may be 44



AKTIESELSKABET NAKSKOV SKIBSVÆRFT	
MIDSHIP - SECTION	
SKALA 1/2" = 1'-0"	DATO 28 JUNI 1919
Tegnet af POAN	Efterset af POAN
KLASSE B	no 4075

AKTIESELSKABET NAKSKOV SKIBSVÆRFT
28/6.1919
Thomsen.

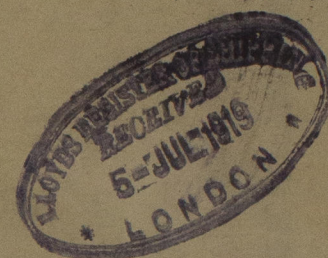
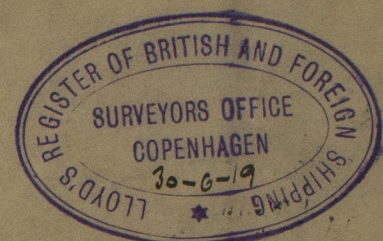
2mm
11.7.19.

Naksten Kisteværkt,
Danmark.

Tauvinding No 5.

Midship section.

Duplicate.



m/s Virginia, Cpn. Rpt. No. 6244.

W1111 - 0201

RETAIN

RETAIN



© 2020

Lloyd's Register
Foundation