

STEAM HOPPER BARGE.

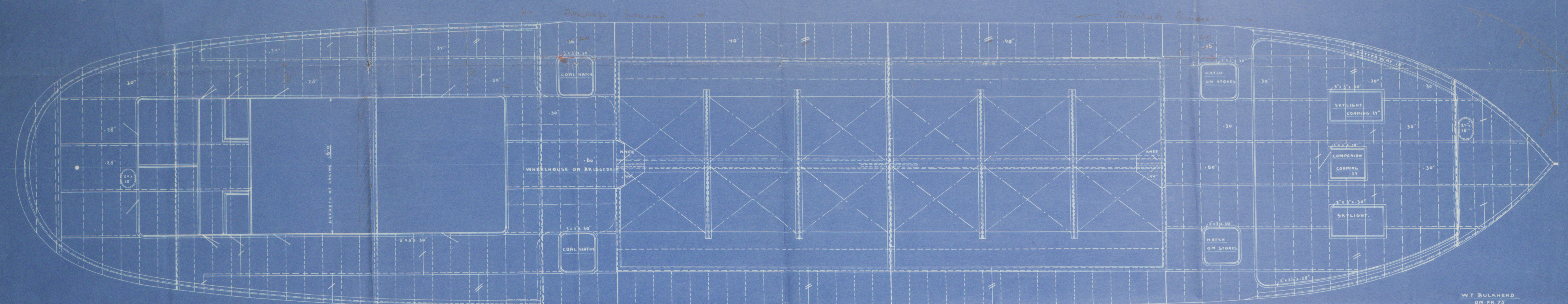
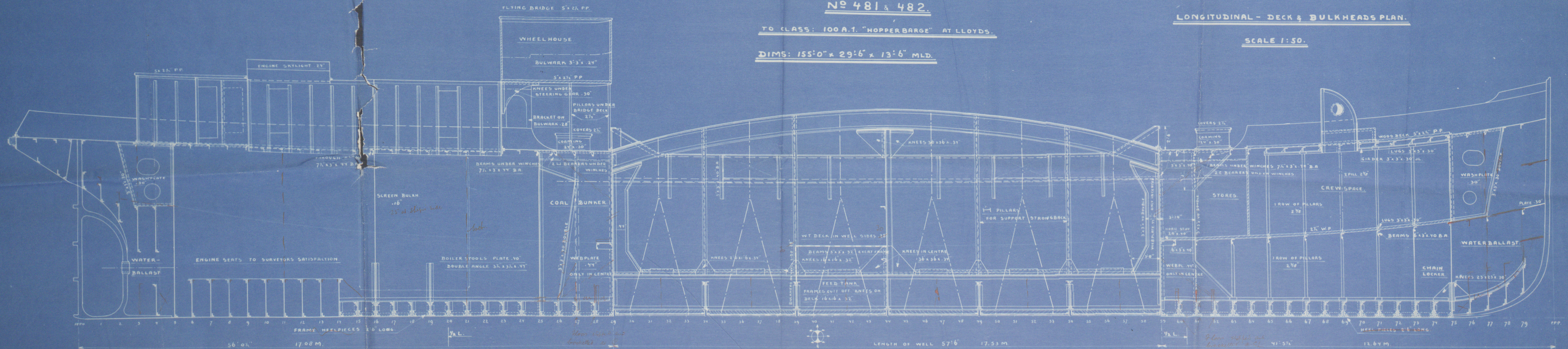
No 481 & 482.

TO CLASS: 100 A.1. "HOPPER BARGE" AT LLOYDS.

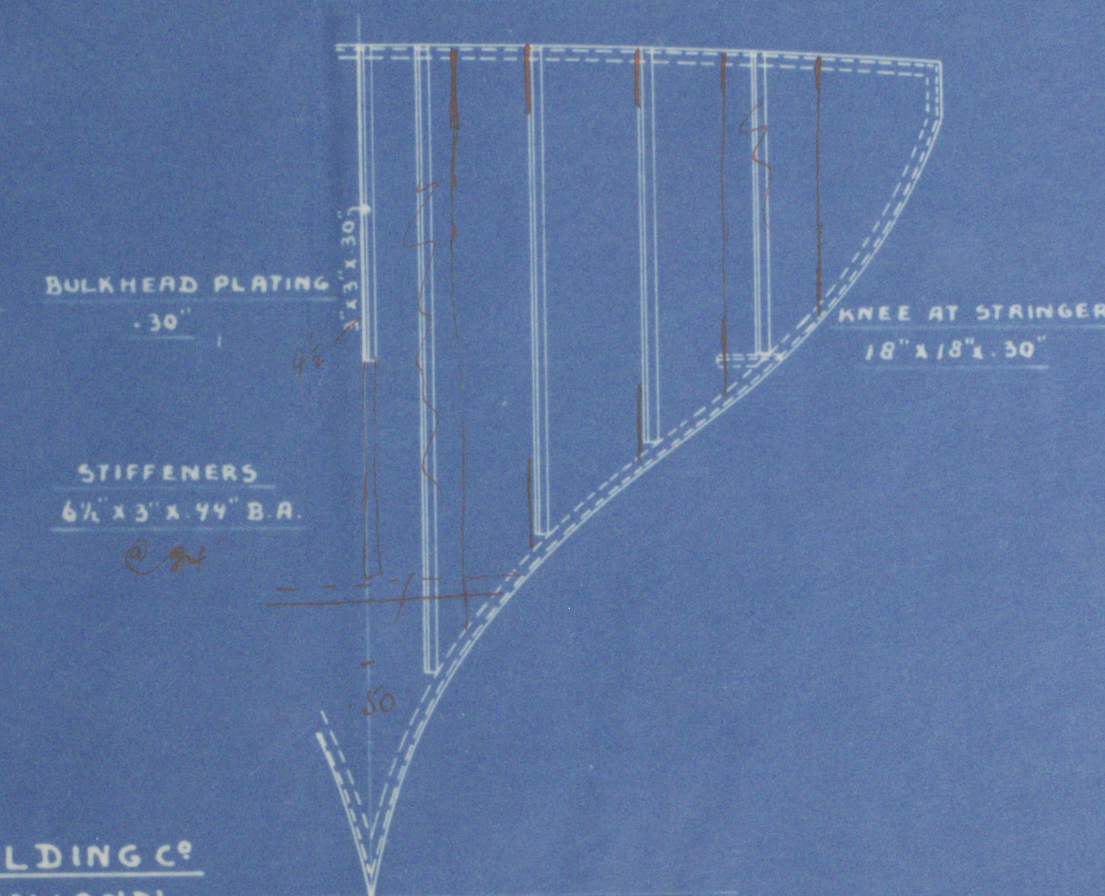
DIMS: 155'0" x 29'6" x 13'6" MLD.

LONGITUDINAL - DECK & BULKHEADS PLAN.

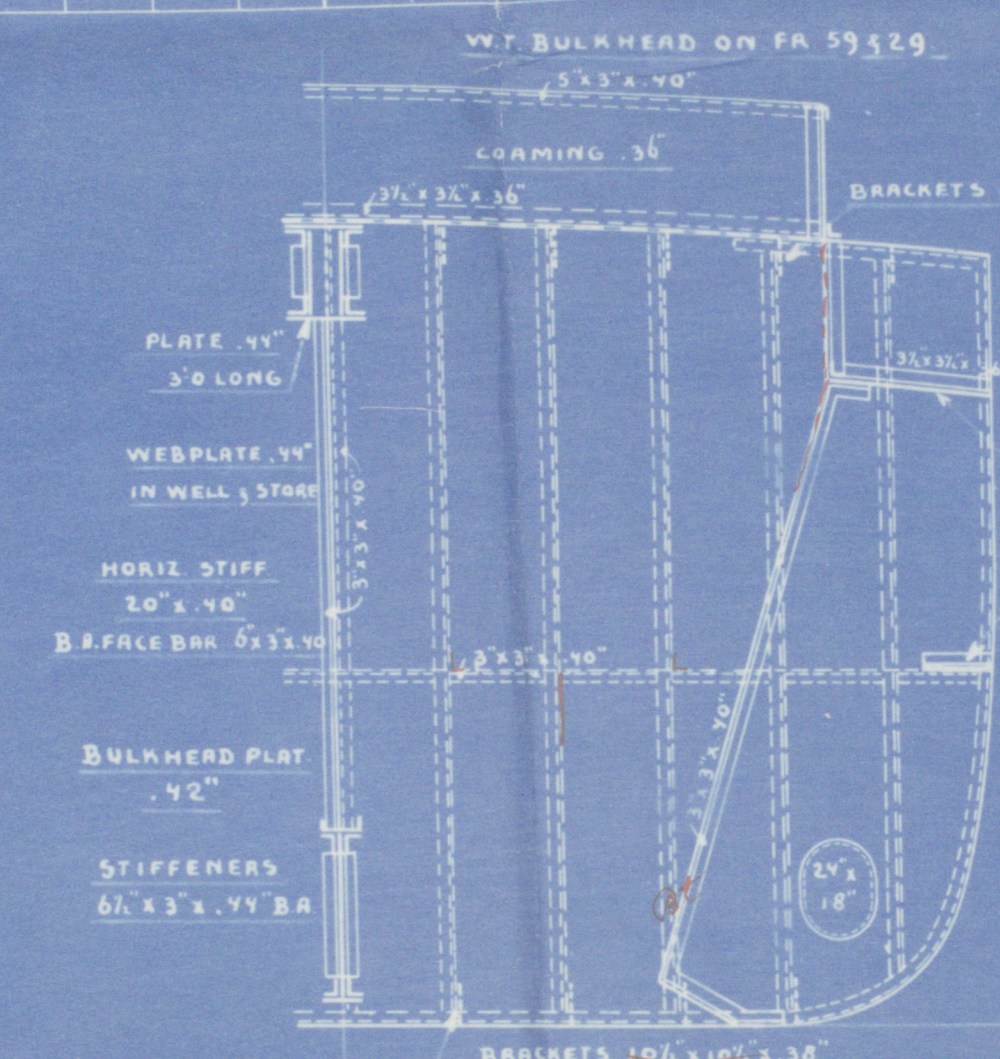
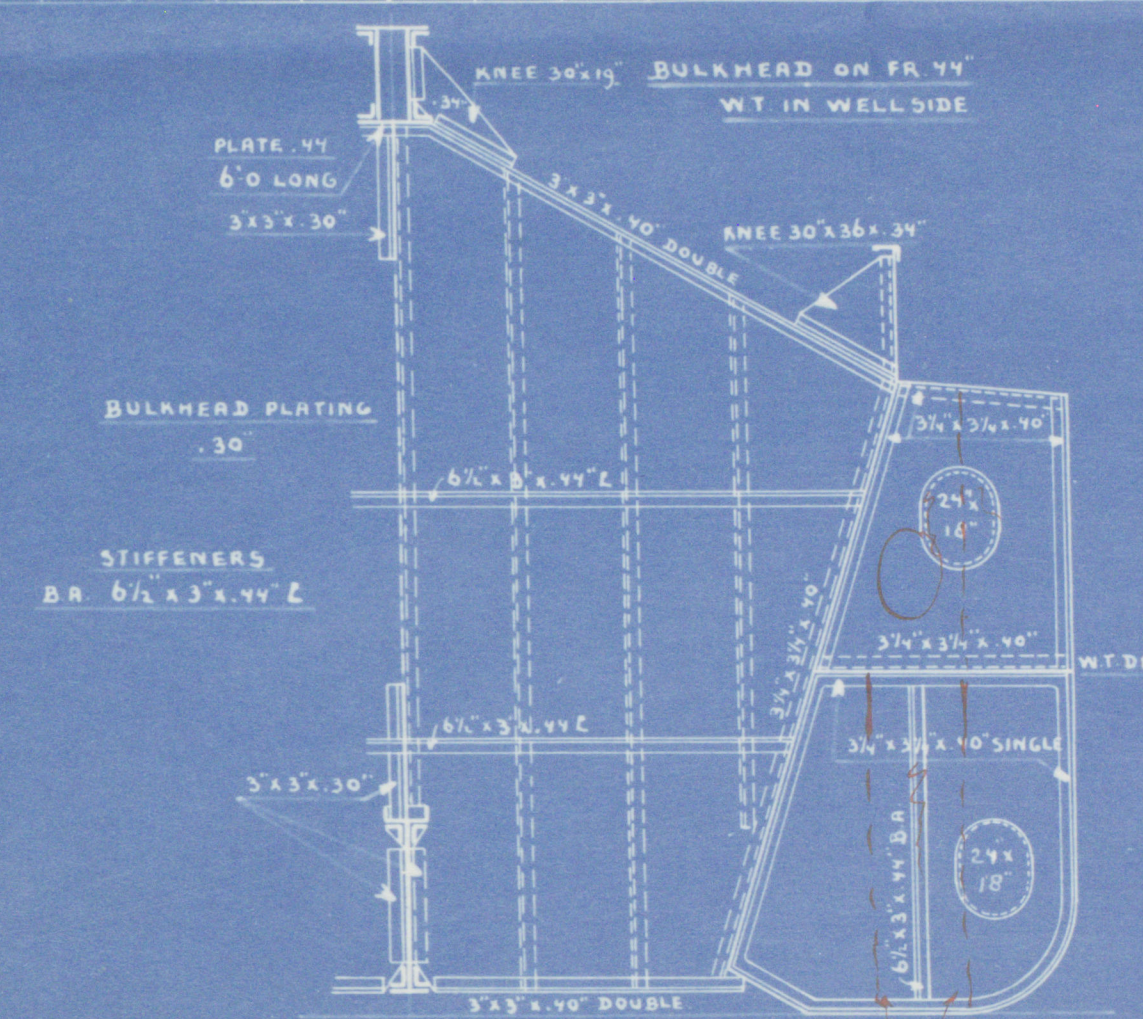
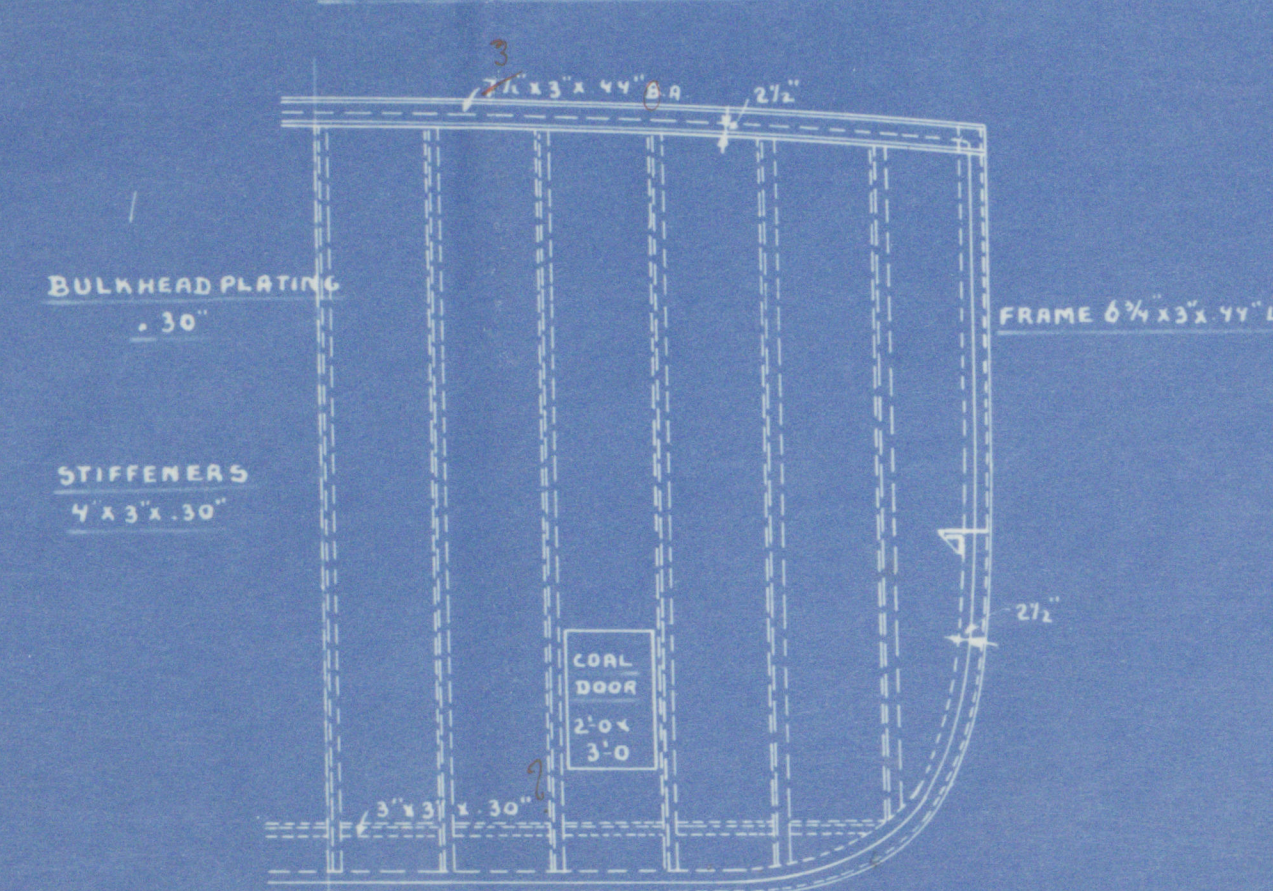
SCALE 1:50.



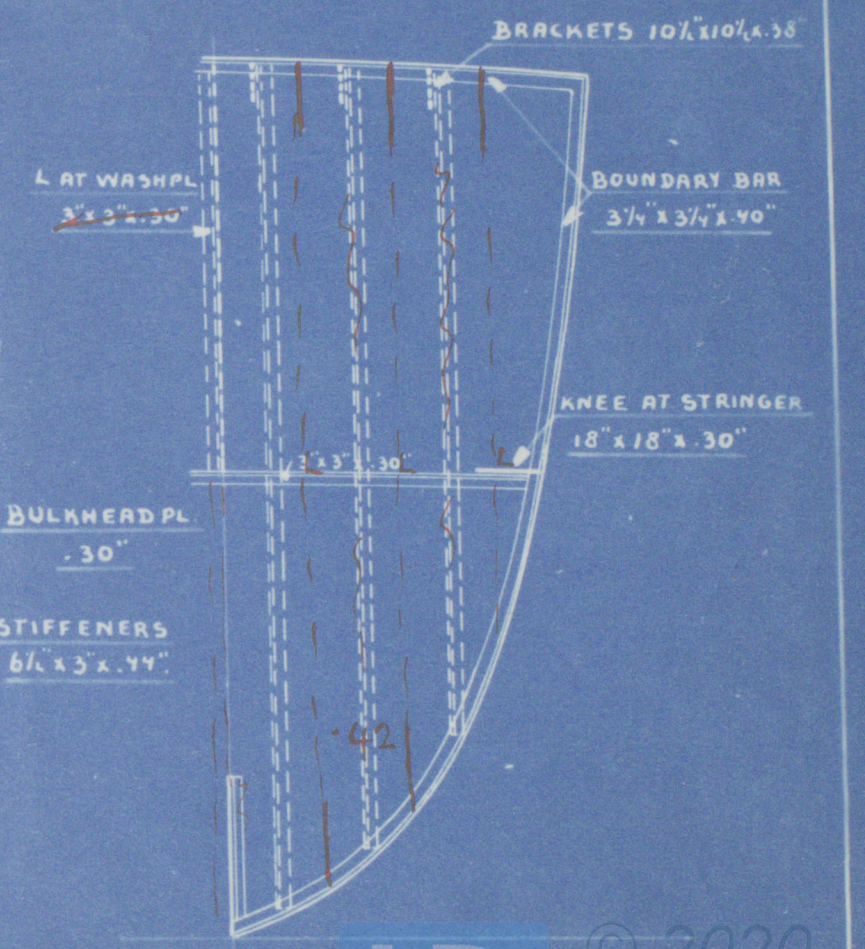
WT BULKHEAD ON FR 5.



BUNKER BULKHEAD ON FR 25.



WT BULKHEAD ON FR 75.



86-20-601144

W1109-0298

Messrs J Meyers
Shedbuilding Co
Yard Nos 48 1/2.

Profile & Decks

Hopper Barge.

Foremost 26

Photo. 14159.



© 2020

Lloyd's Register
Foundation