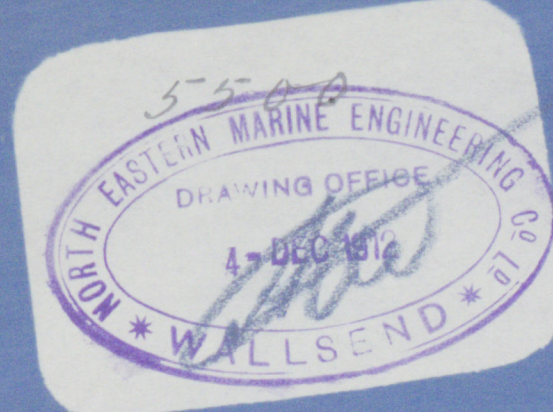


NORTHUMBERLAND ENGINE WORKS

TRACING 551.

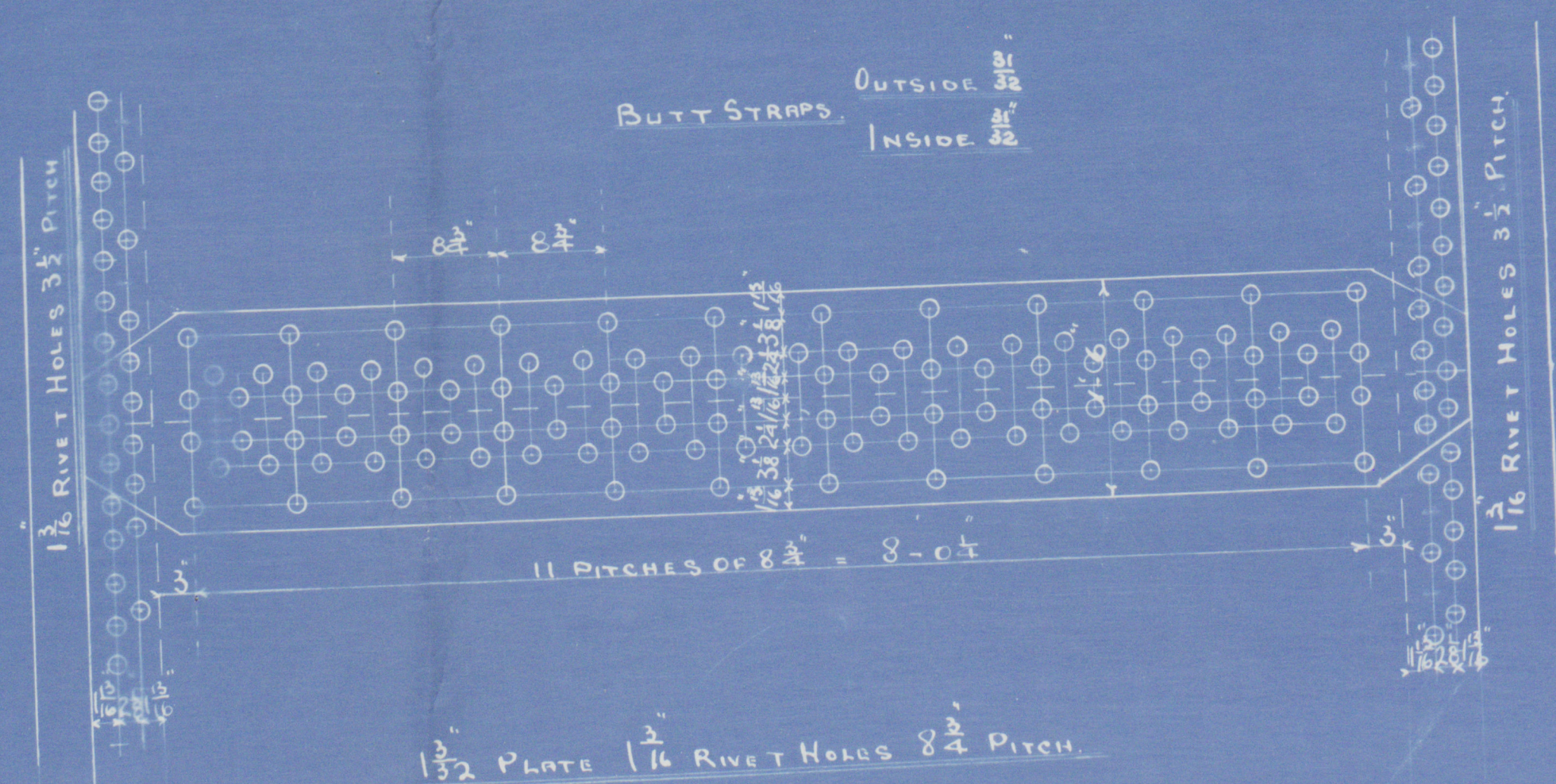
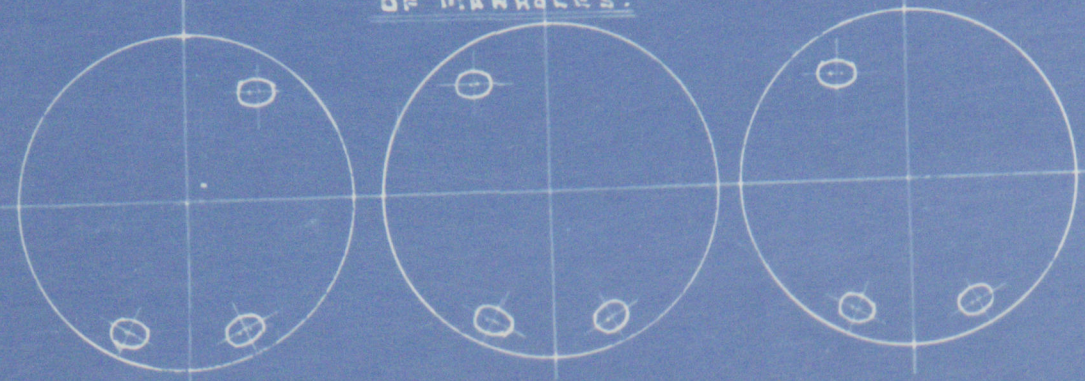
STEAM BOILER



9/12/12

PERCENTAGE STRENGTH OF PLATE = 86.4%
PERCENTAGE STRENGTH OF RIVETS = 86.7%

VIEW LOOKING ON BACK OF BOILER SHOWING POSITION OF MANHOLES.



SURVEY TO LLOYDS AND OWNERS APPROVAL.

HEATING SURFACE OVER TUBE PLATES = 1518 SQ. FT.
ELSEWHERE = 372 SQ. FT.

TOTAL = 1950 SQ. FT. PER BOILER.

STEAM SPACE = CUB. FT.

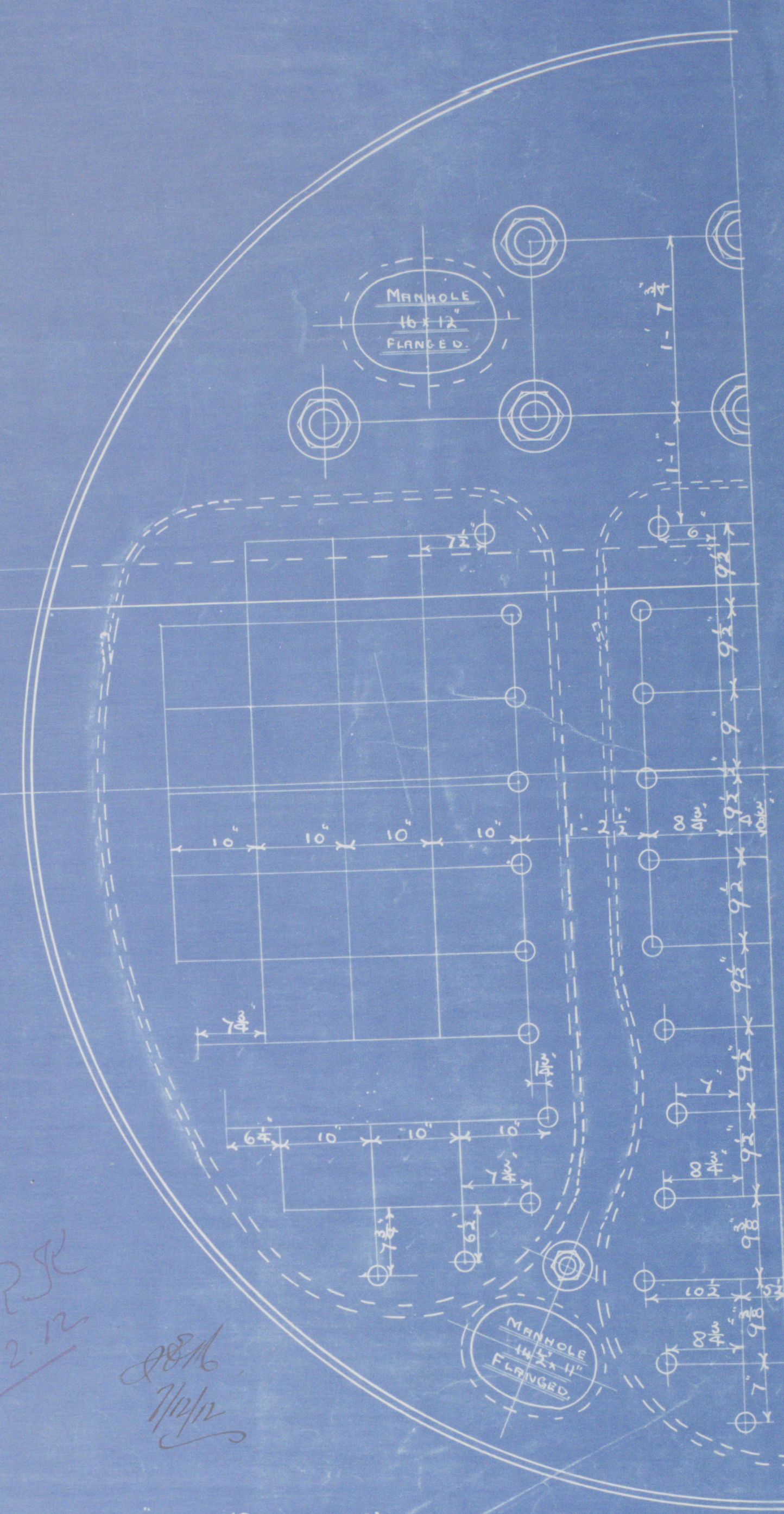
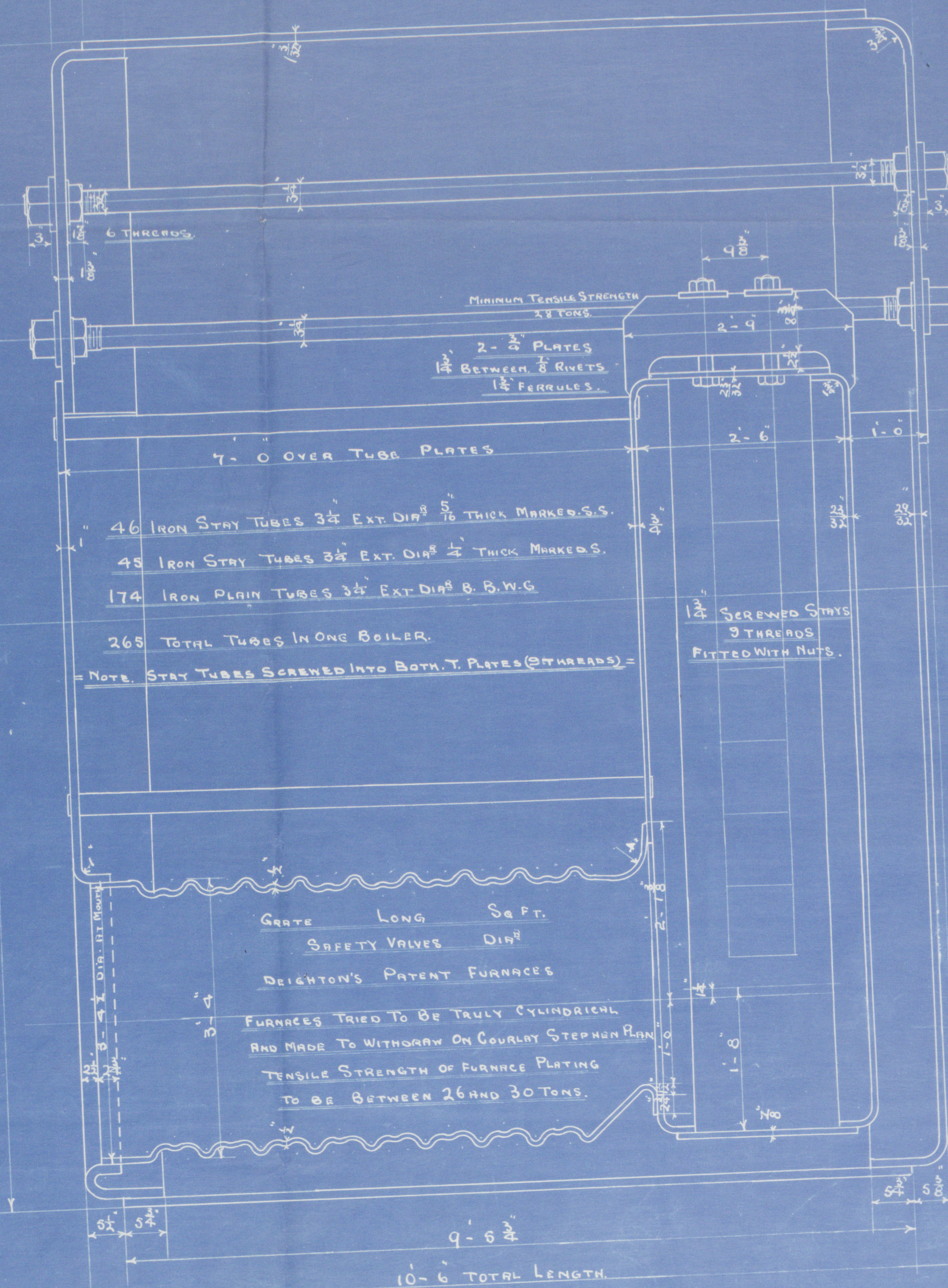
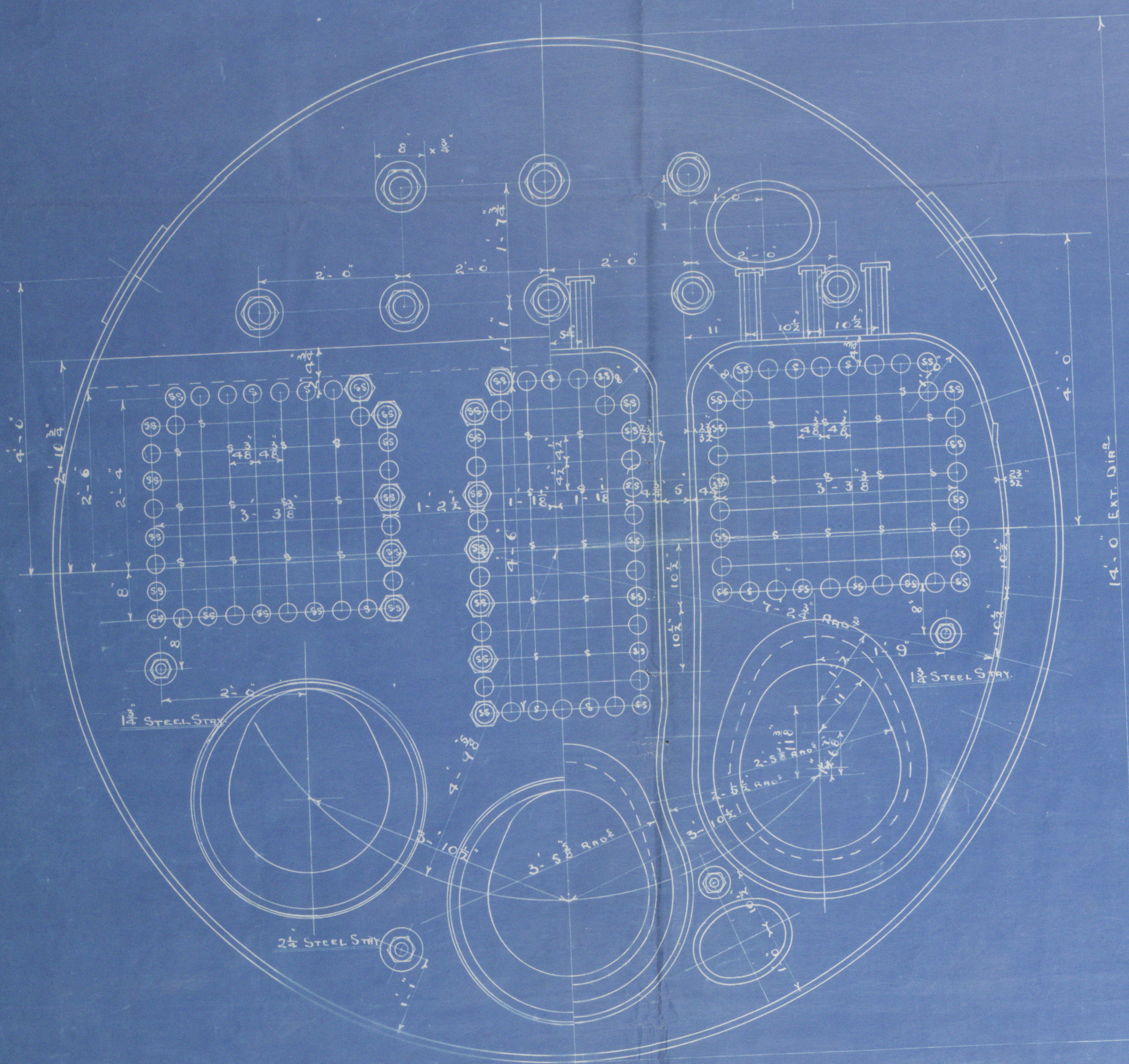
WORKING PRESSURE 180 LBS.

TEST PRESSURE 360 --

NOTE: ALL PLATE STAYS BE TO BE OF STEEL SMOKE TUBES OF IRON.

TENSILE STRENGTH OF SHELL PLATING TO BE NOT LESS THAN 28 1/2 TONS

ALL HOLES DRILLED IN PLACE AFTER PLATES ARE BENT.



STAYS MARKED THUS O 2 DIA (9 THREADS)

ALL OTHERS 1 1/2 DIA (9 THREADS)

NOTE: ALL STAYS SCREWED AND FITTED WITH NUTS.

FOR POSITION OF MANHOLES SEE SKETCH.
3 TUBES

CONTRACT 2005 2117.

North Eastern Marine

W1109-0178

(3) Boilers No 2117
for

Tyne Irons S.B. 190

pressure 180 lbs

Newcastle

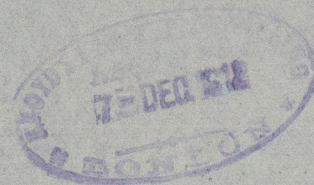
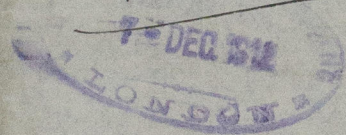
6/12/12

Duplicate of 2096

S.S. ORLA

NEWCASTLE-ON-TYNE

REPORT No 66111



© 2020

Lloyd's Register
Foundation