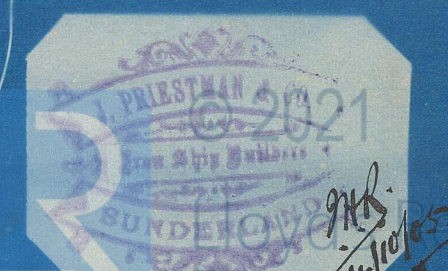
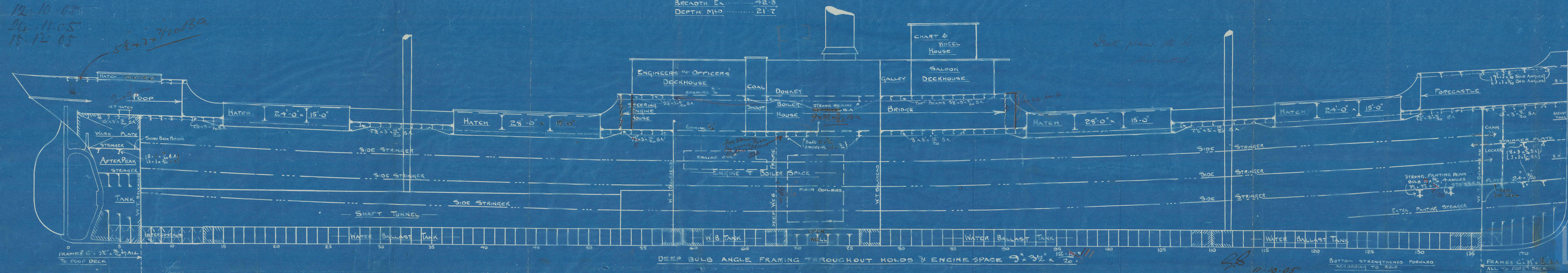


AMENDED PROFILE . S.S. N° 116.

SCALE $\frac{1}{8}$ " = ONE FOOT.

DIMENSIONS
 LENGTH B.P. 230'-0"
 BREADTH EX 42'-3"
 DEPTH MLD 21'-7"

12.10.05
 24.11.05
 15.12.05



W1106-0114

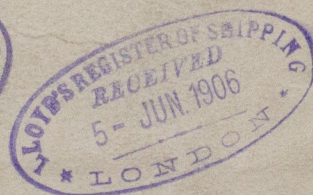
J Priestman
& Co

No 116

Amended

Profile

S.S. Limes
Sld. J.C. No 22899



RETAIN



© 2021

Lloyd's Register
Foundation