

MIDSHIP SECTION

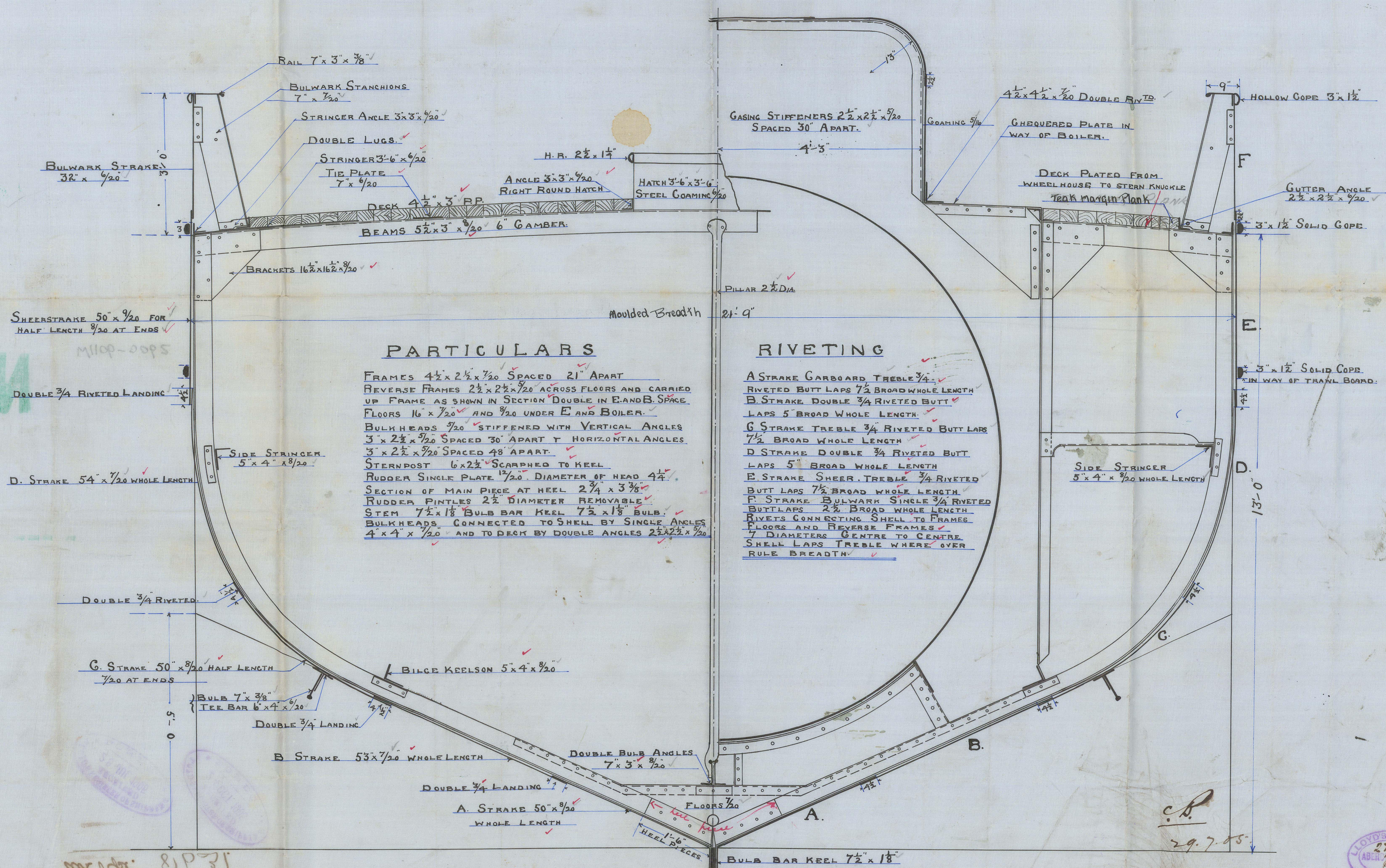
OF
STEAM SCREW TRAWLER
CLASS 100A LLOYDS SPECIAL SURVEY.

SCALE 3/4"=FOOT.

No. 282

DIMENSIONS

LENGTH BETWEEN PERPS	115'-0"	LENGTH PER RULE	114'-0"	EQUIPMENT	
BREADTH EXTREME	22'-00"	BREADTH HALF	10'-8 1/2"	1 ST ANCHOR	5 GWT. EX STOCK BLACK
DEPTH MOULDED	13'-0"	DEPTH PER RULE	13'-5"	2 ND "	4 1/2" " " "
DEPTH IN HOLD	12'-16"	HALF GIRTH	19'-12"	3 RD "	2 1/2" " " "
BREADTHS IN LENGTH	5'-24"	1 ST SCANTLING	43'-49"	90 FATHOMS	1" STUDLINK CHAIN
DEPTHS	8'-44"	2 ND "	49'-58'-43"	60 "	5 1/2" HAWSER 60 FATHOMS 4 1/2" WARP



PARTICULARS

FRAMES 4 1/2' x 2 1/2' x 1/20" SPACED 21" APART
REVERSE FRAMES 2 1/2' x 2 1/2' x 1/20" ACROSS FLOORS AND CARRIED UP FRAME AS SHOWN IN SECTION DOUBLE IN E AND B SPACE.
FLOORS 16' x 1/20" AND 1/20" UNDER E AND B BOILER.
BULKHEADS 1/20" STIFFENED WITH VERTICAL ANGLES 3' x 2 1/2' x 1/20" SPACED 30" APART Y HORIZONTAL ANGLES 3' x 2 1/2' x 1/20" SPACED 48" APART.
STERNPOST 6' x 2 1/2' SCARPHED TO KEEL
RUDDER SINGLE PLATE 1 1/2" DIAMETER OF HEAD 4 1/2".
SECTION OF MAIN PIECE AT HEEL 2 3/4' x 3 3/4".
RUDDER PINTLES 2 1/2" DIAMETER REMOVABLE.
STEM 7 1/2' x 1 1/2" BULB BAR KEEL 7 1/2' x 1 1/2" BULB.
BULKHEADS CONNECTED TO SHELL BY SINGLE ANGLES 4' x 4' x 1/20" AND TO DECK BY DOUBLE ANGLES 2 1/2' x 2 1/2' x 1/20".

RIVETING

A STRAKE CARBOARD TREBLE 3/4"
RIVETED BUTT LAPS 7 1/2" BROAD WHOLE LENGTH
B STRAKE DOUBLE 3/4" RIVETED BUTT LAPS 5" BROAD WHOLE LENGTH
C STRAKE TREBLE 3/4" RIVETED BUTT LAPS 7 1/2" BROAD WHOLE LENGTH
D STRAKE DOUBLE 3/4" RIVETED BUTT LAPS 5" BROAD WHOLE LENGTH
E STRAKE SHEER TREBLE 3/4" RIVETED BUTT LAPS 7 1/2" BROAD WHOLE LENGTH
F STRAKE BULWARK SINGLE 3/4" RIVETED BUTT LAPS 2 1/2" BROAD WHOLE LENGTH
RIVETS CONNECTING SHELL TO FRAMES FLOORS AND REVERSE FRAMES 7" DIAMETERS CENTRE TO CENTRE
SHELL LAPS TREBLE WHERE OVER RULE BREADTH

Mr. Wm. 8P 31
11 " 7 1/2"
Bulwark 1000
11 1/2' x 5 1/2"
H. 1/2" 1/2" 1/2"



L1106-0062
© 2021

M^r. John Buthe

L. L. R. 282

Middle Section

L. L. "Victor"

Abt Rpt. 8b31.

29.705



Done

LETTER BY FAX
BUREAU 1 x 28

1/20 VI ENDG

C. STAKE 20 x 8/100 HOLE PENCIL

DOUBLE 3/4 BIASED

D. STAKE 27 x 1/100 HOLE PENCIL

2 x 4
SIDE 21

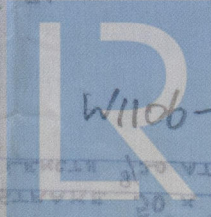
BULWARK STRAKE
3 1/2 x 7/100

DOUBLE 3/4 BIASED LANDING

HOLE PENCIL 1/20 VI ENDG

2 HOLE PENCIL 20 x 8/100

RETAIN



© 2021

W1106-0062

Lloyd's Register
Foundation