

1.5.07  
 115'0" x 21'6" EX x 12'3" MOULDED  
 SCALE 2" = FOOT

# MIDSHIP SECTION

STEEL SCREW TRAWLER

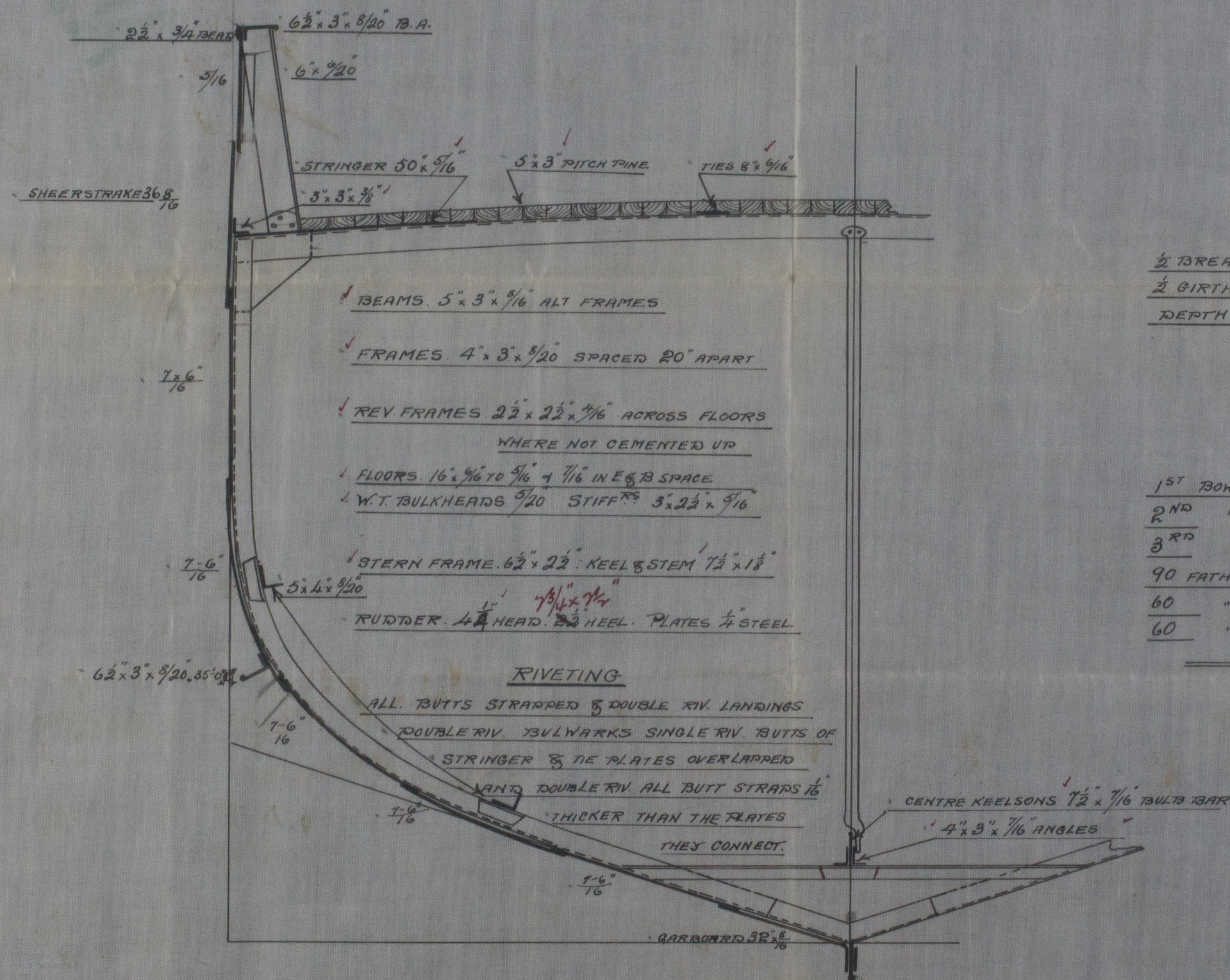
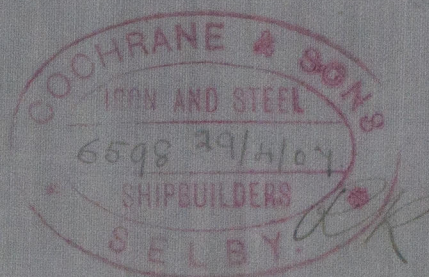
N<sup>o</sup> 416

LENGTH 115'0" x 21'6" EX x 12'3" MOULDED

SCALE 2" = FOOT

TO CLASS 100 A.1 STEAM TRAWLER

DECK PLATED OVER IN WAY OF MACHINERY  
 MACHINERY CASING AS PREVIOUSLY APPROVED

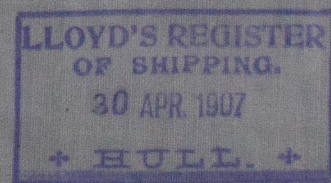


## NUMERALS

1/2 BREADTH	10.7	L 5.32
1/2 BIRTH	18.83	L
DEPTH	12.71	D 8.96
	42.241" N <sup>o</sup>	
	113.83	
	4808.17.2" N <sup>o</sup>	

## EQUIPMENT

1 <sup>ST</sup> BOWER ANCHOR	5 CHTS EX STOCK
2 <sup>ND</sup> " "	4 1/2" " "
3 <sup>RD</sup> " "	2 1/2" " "
90 FATHOMS	1" SHORT LINK CABLE
60 " "	5 1/2" HAYSER
60 " "	4" WARD



C.B.  
 1.5.07



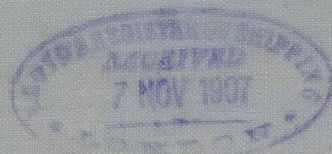
Midship Section

Cochrane & Sons

- No. 416 -

S/s Othello

Hull Report No 19570



REMAIN

MIDSHIP SECTION

STEEL SCHEM DRAWING

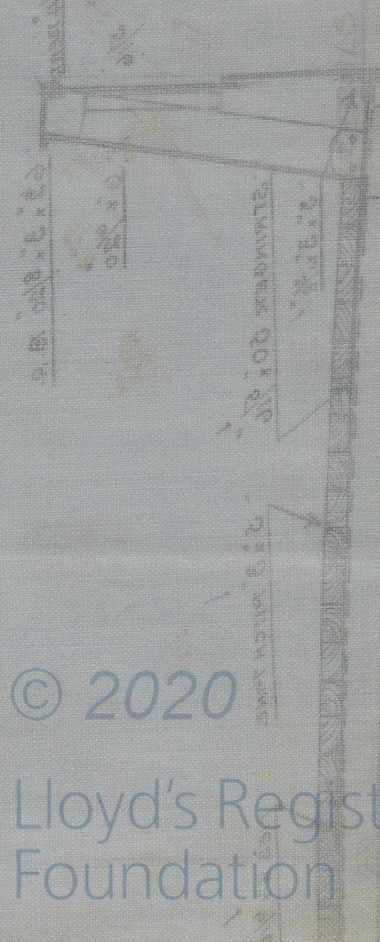
No 416

SCALE 1/2" = 1' 0"

LENGTH 112' 0" x 31' 8" x 13' 3" WIDTH

TO CROSS 100' 0" STEAM TUNNEL

MACHINERY CASING ON DECK



© 2020

Lloyd's Register Foundation