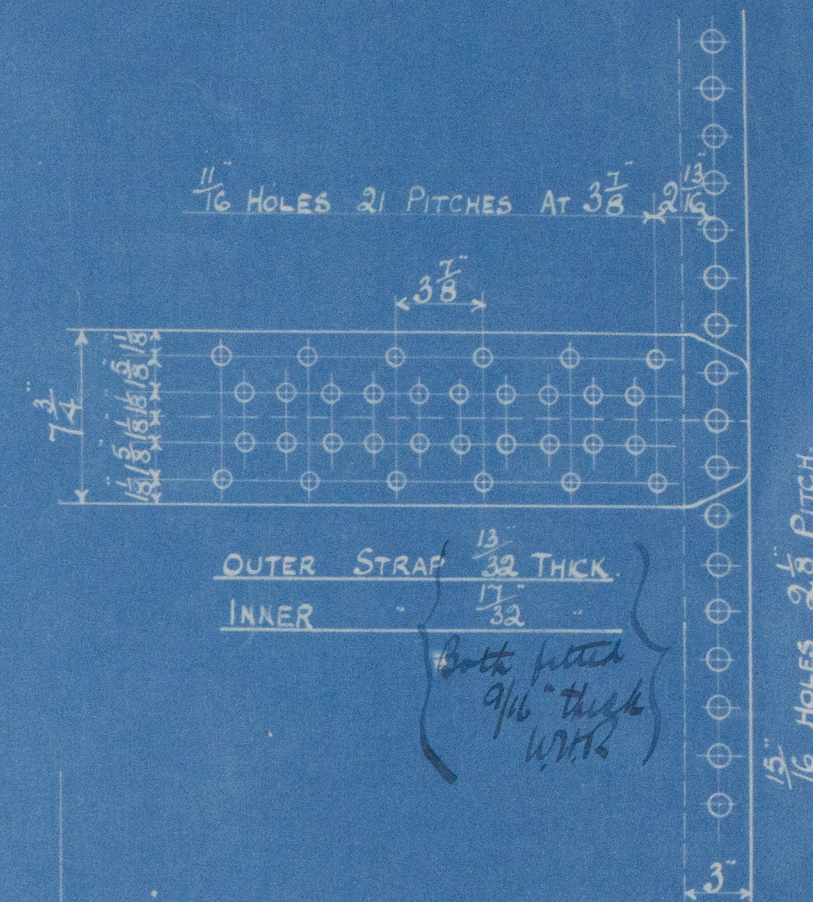
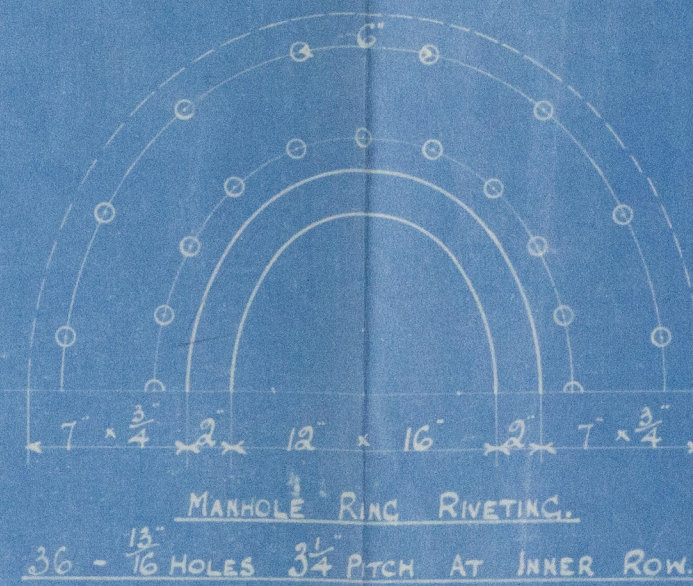


STEEL BOILER 7-6 DIA 8-0 LONG 130 LBS W.P. LLOYDS

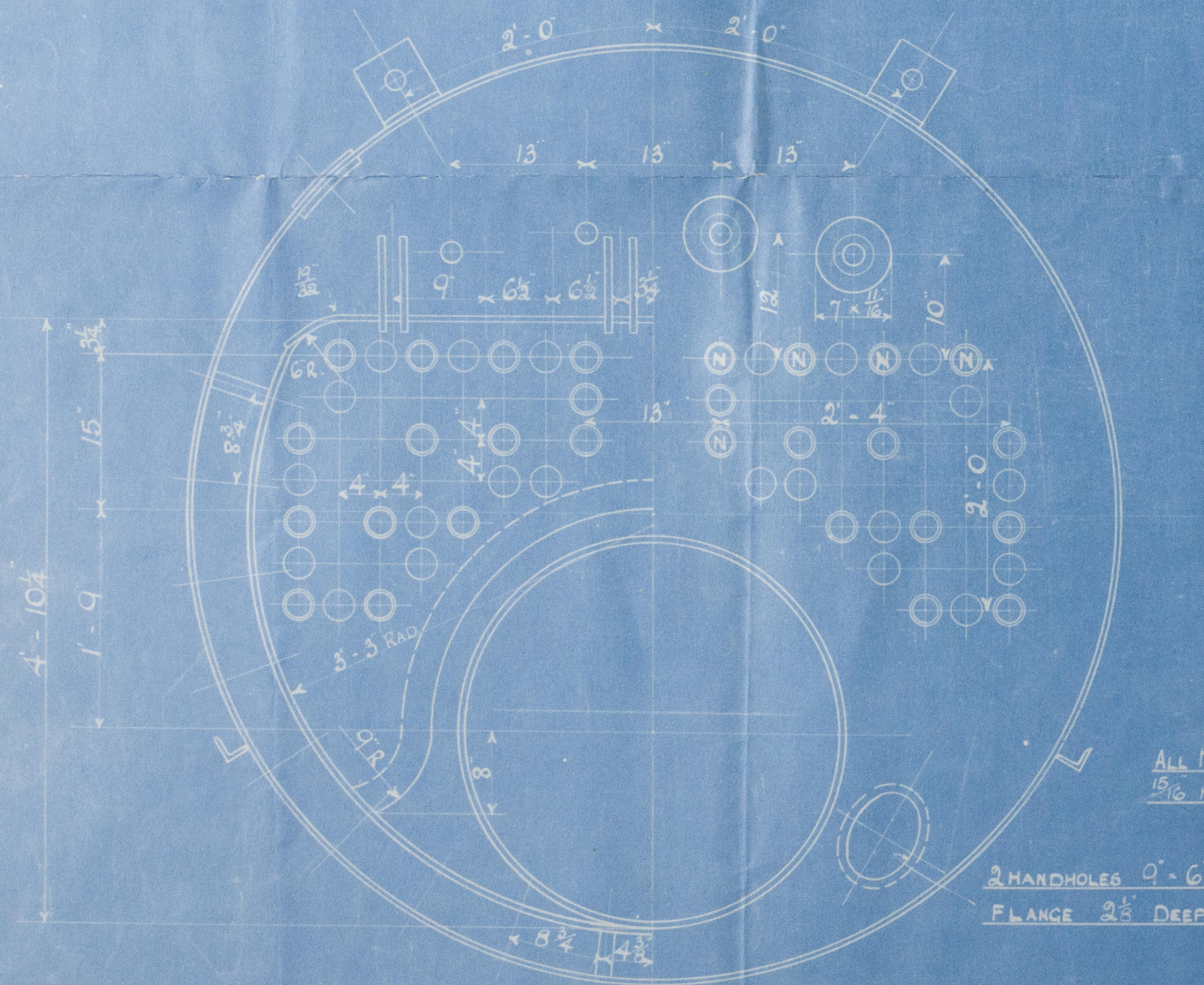
5659

SPECIFICATION OF MATERIALS.

SHELL STRAPS, CIRDERS & MAINSTAYS 28 TO 32 TONS.
BALANCE OF PLATES, RIVETS & SCREW STAYS 26 30



COMBUSTION CHAMBER SCREW STAYS
SCREWED 9 TPI NUTTED AT ENDS
ALL 1 1/2 DIA.

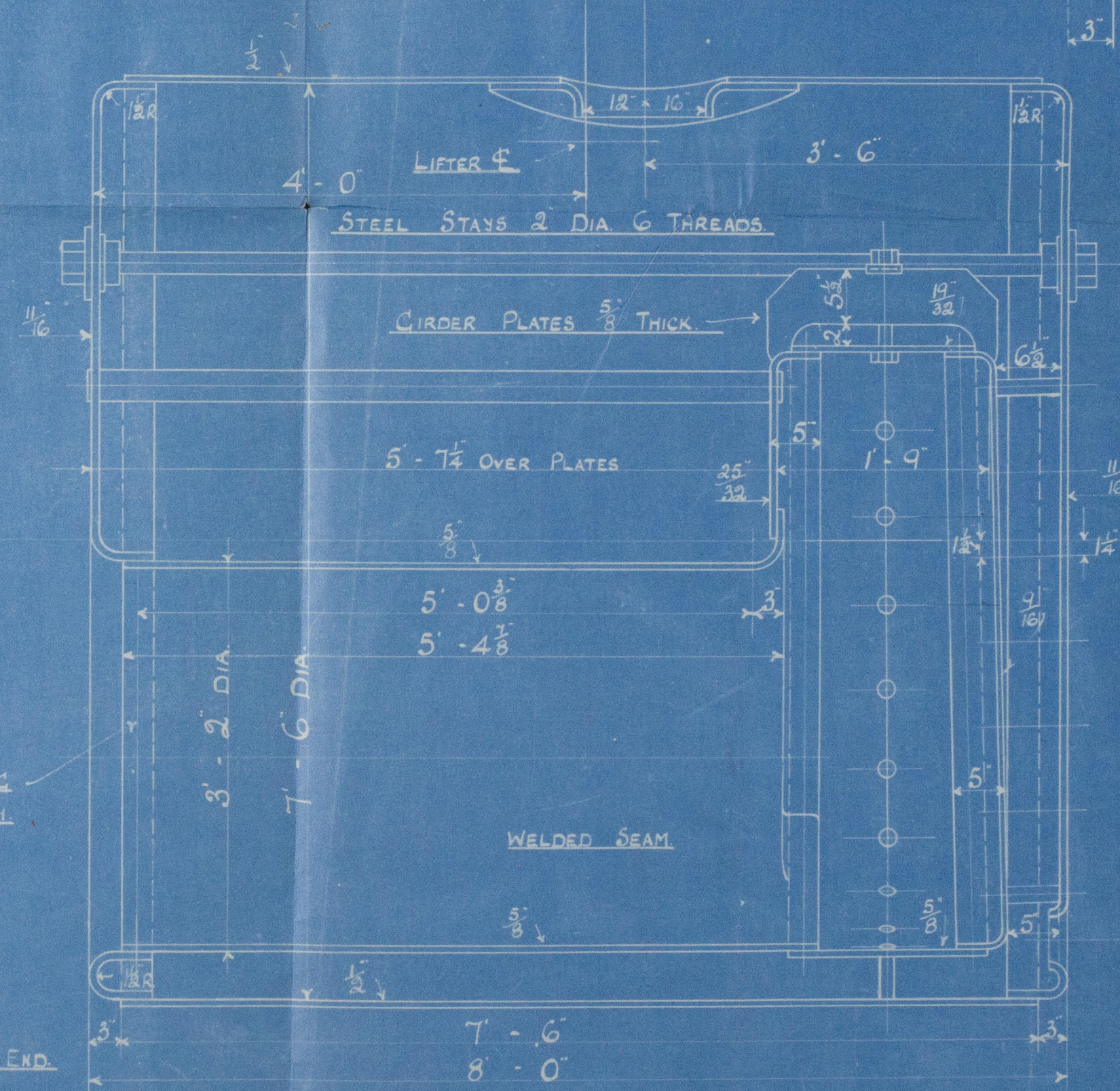


ALL INTERNAL RIVETING
15/16 HOLES 2 1/8 PITCH

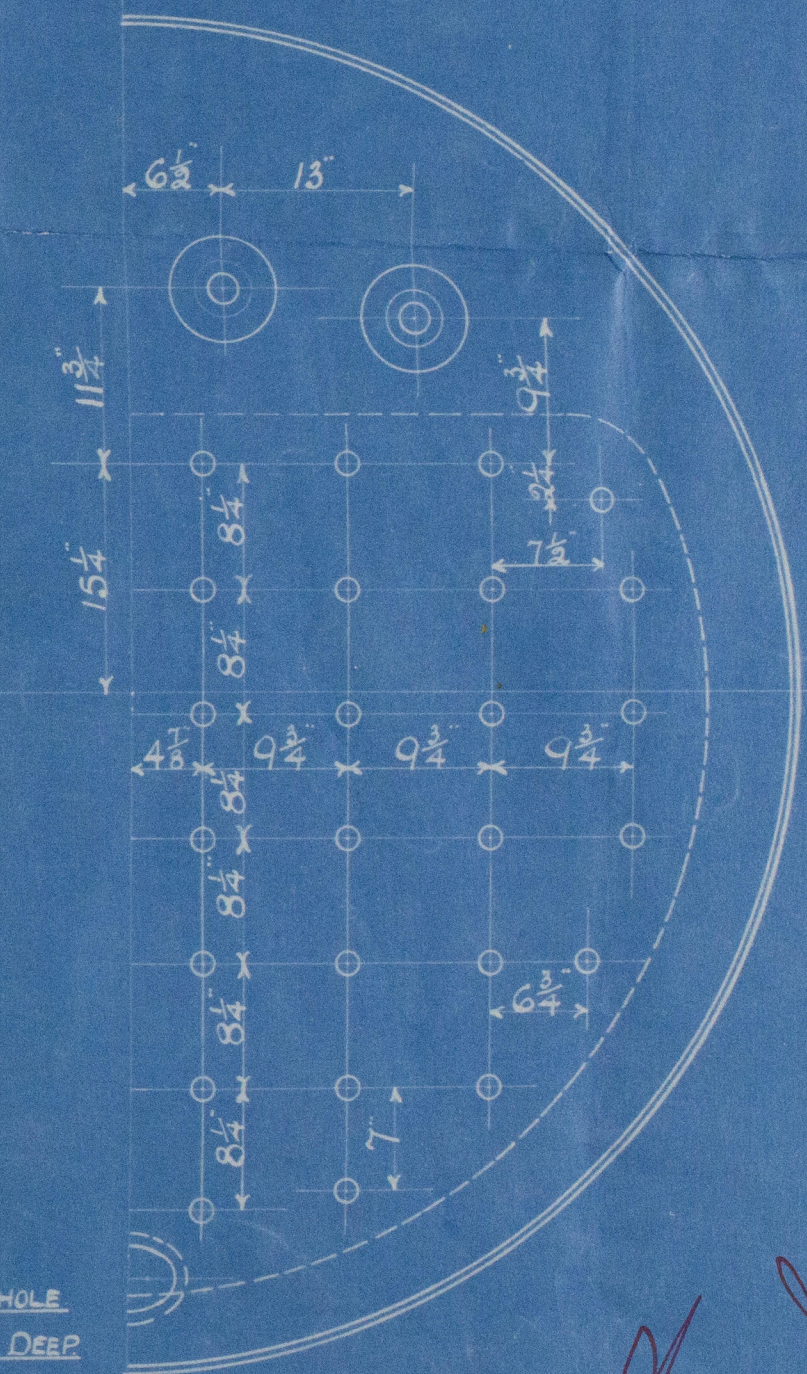
2 HANDHOLES 9'-6"
FLANGE 2 1/2\"/>

54 PLAIN TUBES 3\"/>

SCREWED 9 TPI INTO BOTH PLATES
SINGLE NUT AT N.



6\"/>



HEATING SURFACE 440 sq ft
GRATE AREA (4'-0\"/>

331A

RILEY BROS. (BOILERMAKERS) LTD.
STOCKTON ON TEES.

LLOYD'S REGISTER

© 2020

Lloyd's Register
W1104-0418

Rileys No 5669

Duplicate
of No 5620.

7'-6" dia x

8'-0" long.

x

130 lbs W.P.

For

Messrs Harker & Sons

Stockton.

Cargo No 264.

Messrs T. Crichton &

No 430 Verree

No. 6512
LLOYD'S TEST.
245 lbs.
WP 130.
11-6-26, W.H.R.

Mat 12691

No 5620. Mat 12434.

RETAIN

R

Lloyd's Register
Foundation
W1104-0418

Lloyd's



© 2020

Lloyd's Register
Foundation