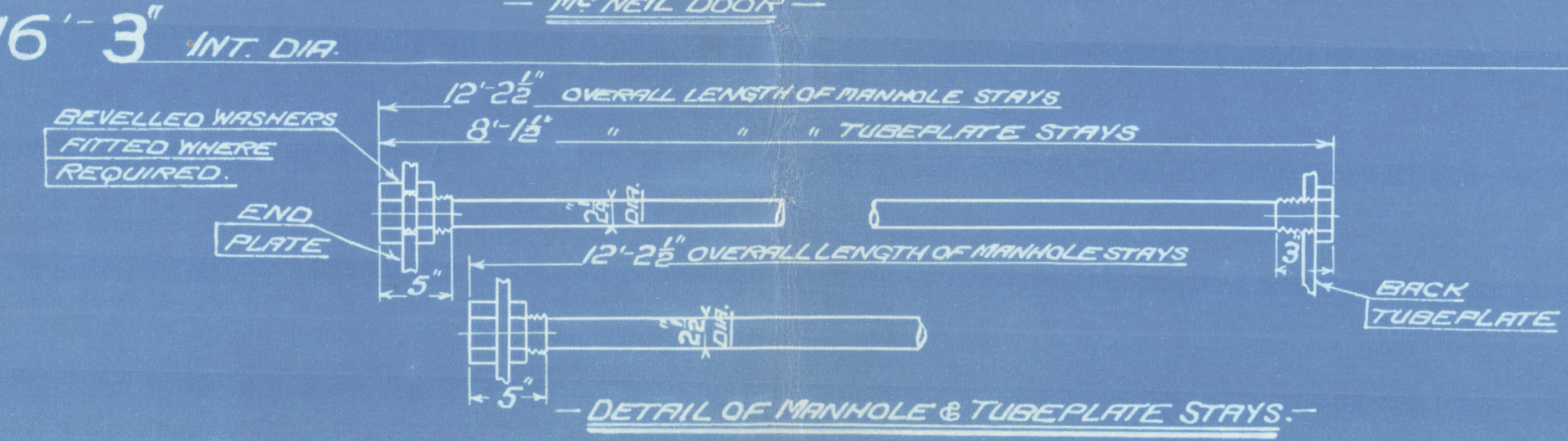
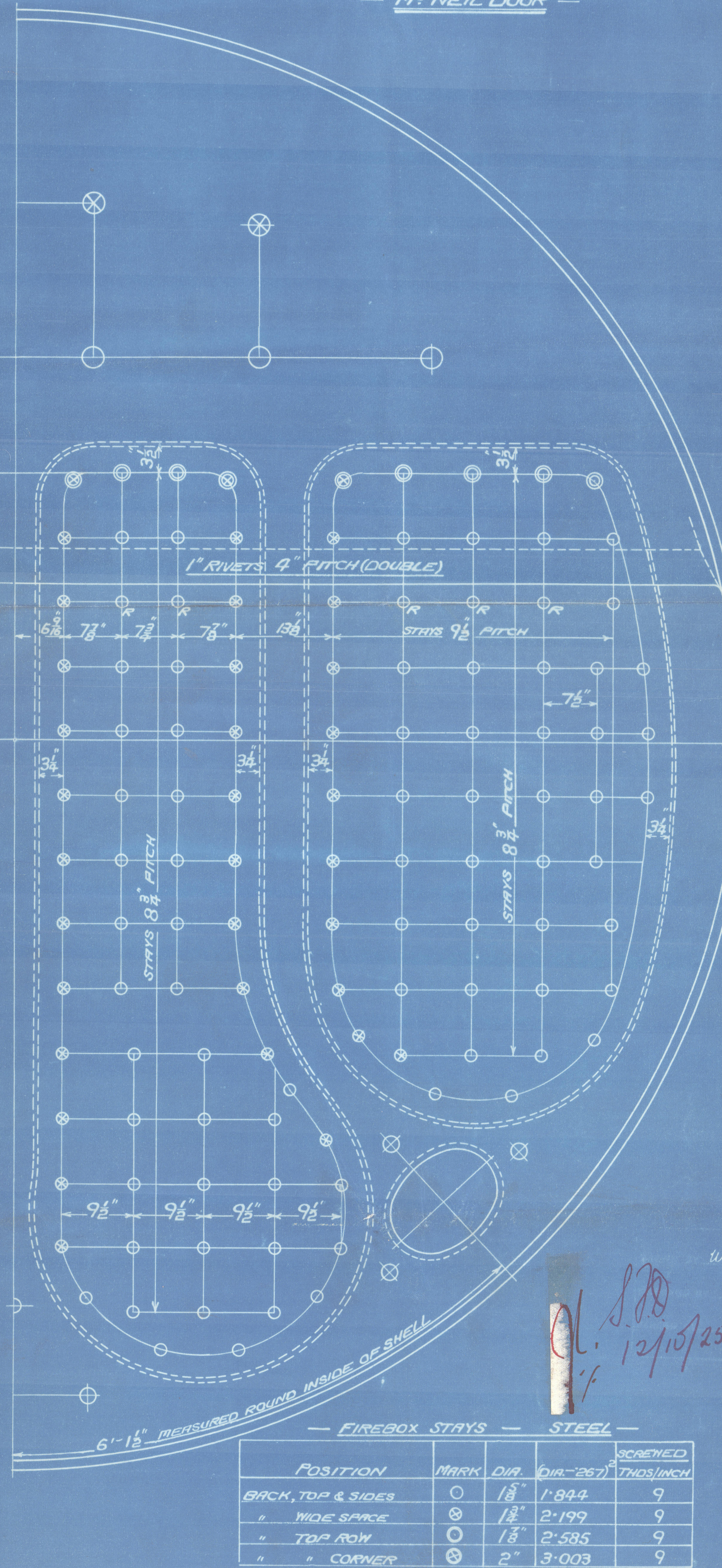
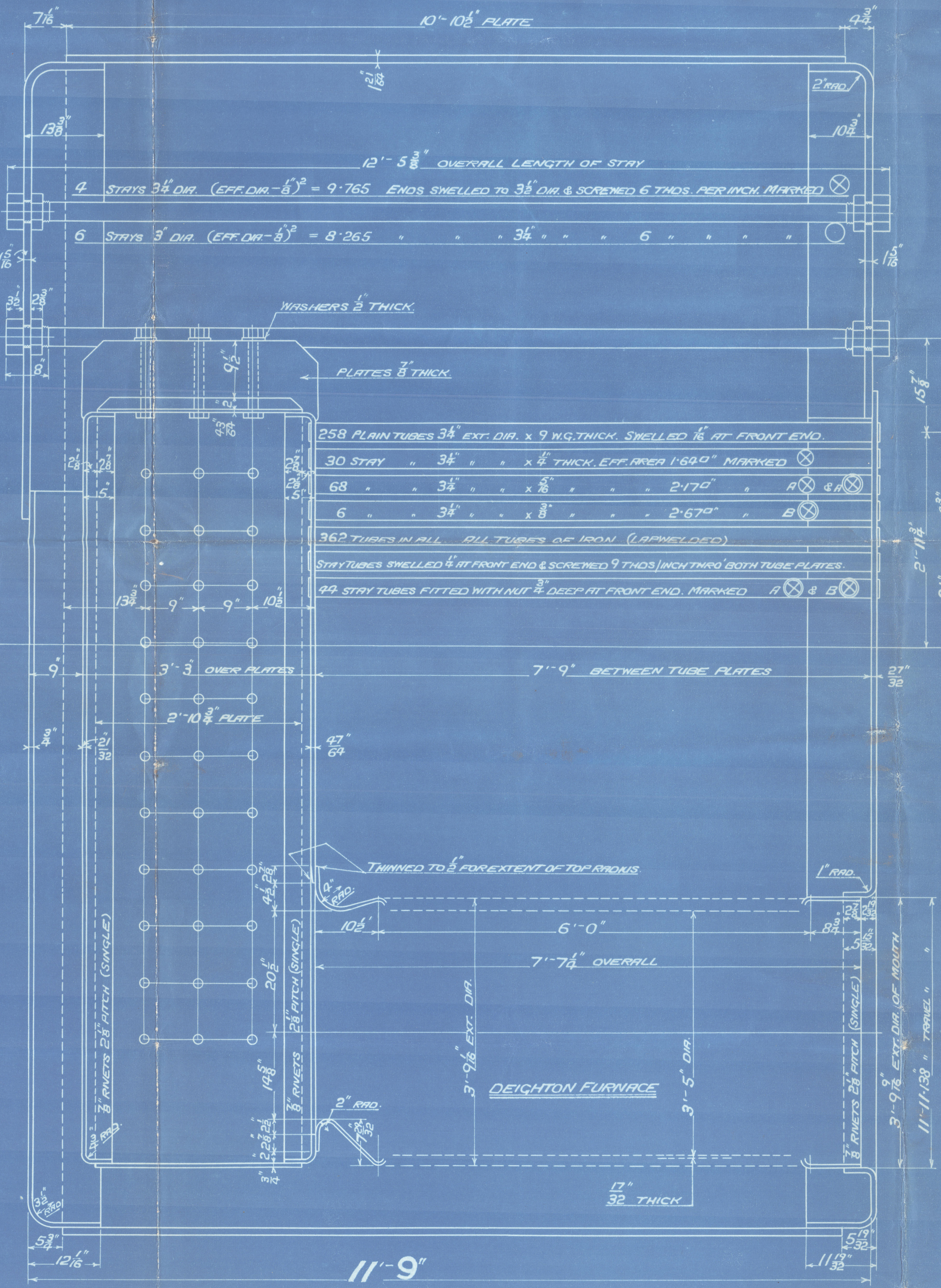
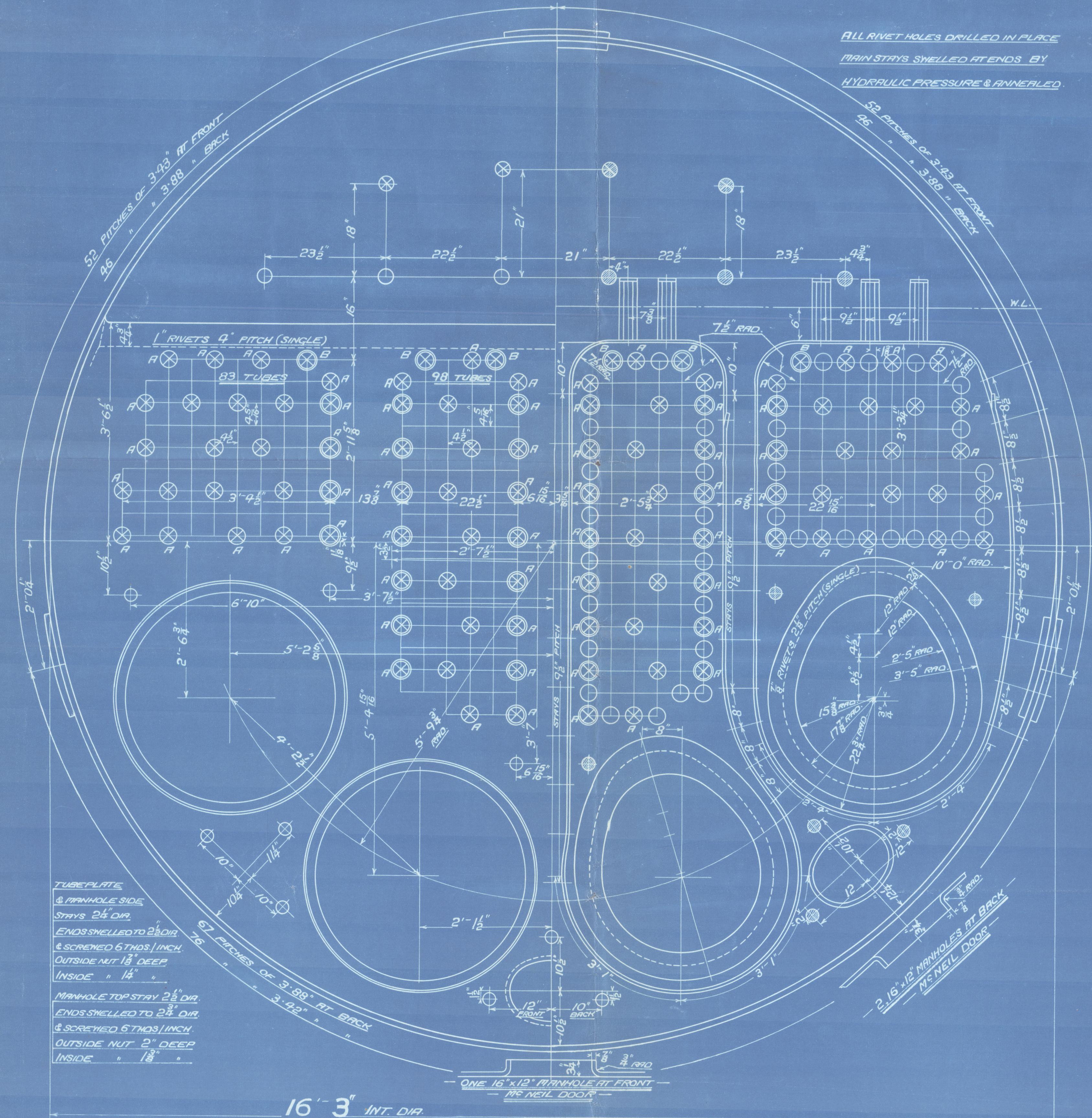
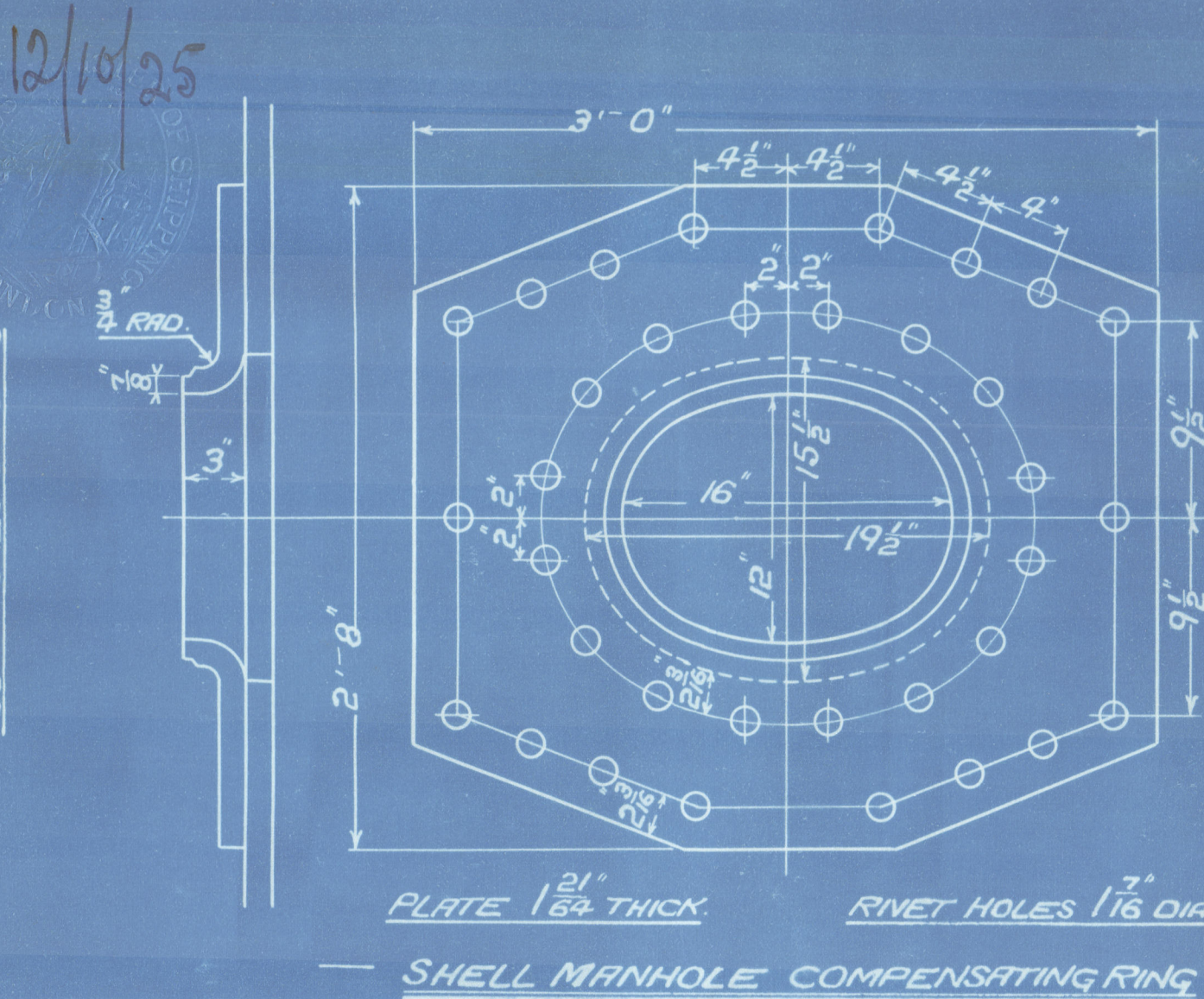
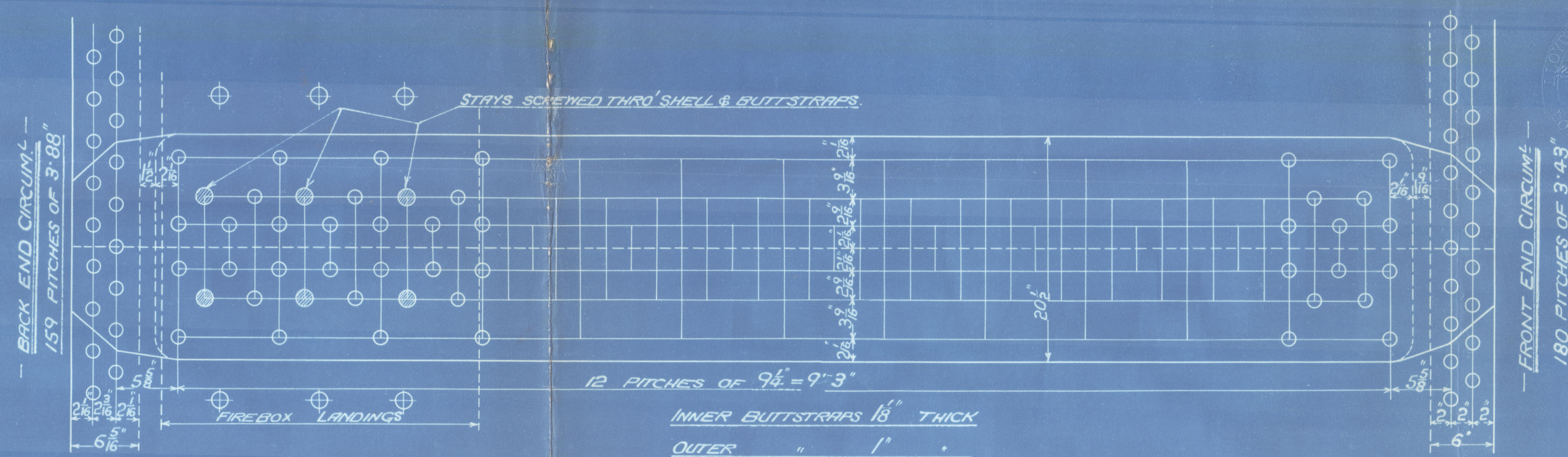


SURFACES	ONE BOILER	2 BOILERS
TUBES	2,390 #	4,780 #
FIREBOX TOP AND SIDES	226 "	452 "
" BACK	95 "	190 "
" TUBEPLATE	61 "	122 "
FURNACES	192 "	388 "
TOTAL HEATING SURFACE	2,966 #	5,932 #
GRATE AREA (5" x 6" BARS)	75 "	150 "
TUBE AREA	16,375 "	32,75 "
WATER	160 "	320 "
STEAM SPACE	505 #	1,010 #
GRATE AREA : HEATING SURFACE	1 : 39.5	
" : TUBE	1 : 31.9	
" : WATER	1 : 2.13	
" : STEAM SPACE	1 : 6.71	
% BOILER ABOVE FIREBOX	29.5	
WEIGHT OF WATER	TONS	TONS

- RIVETING -		
	LONG. E	BACK END CIRC. L
RIVET HOLE DIA.	1 1/8"	1 1/8"
PITCH	9 1/2"	3.88"
% PLATE	85.13	69.5
% RIVET	93	47.4
% CONTAINED	88.9	48.9

LIMITS OF TENSILE STRENGTH & MATERIAL	
SHELL, BUTTSTRAPS AND GIRDERS	28 TO 32 TONS
OTHER PLATES	26 " 30 "
FURNACES	26 " 30 "
MAIN STAYS	28 " 32 "
SCREWED STAYS	26 " 30 "
RIVET BARS	26 " 30 "



11'-9"
MAIN BOILER.
 - TWO OFF -
CON^T N^O 829
 - WORKING PRESSURE 180 LBS. PER SQ. INCH -
 - TEST " 320 " -
 - TO PASS BOARD OF TRADE & LLOYDS SURVEYS -
 - SCALES 1" & 1/2" = ONE FOOT. -

- FIREBOX STAYS - STEEL				
POSITION	MARK	DIA.	DIA. (267)	THOS/INCH
BACK, TOP & SIDES	⊙	1 1/8"	1.844	9
" WIDE SPACE	⊙	1 1/8"	2.199	9
" TOP ROW	⊙	1 1/8"	2.585	9
" CORNER	⊙	2"	3.003	9



O.T. 31308.D
 T.M. 30502
 TRACED, 28/12/2019
 W104-0362

GLASGOW

D. ROWAN & CO LTD

(2) BOILERS N^o 829

AMENDED PLAN

WP-180LBS

R. DUNCAN & CO

S/S N^o 371

N^o 17031

LLOYD'S TEST

320LBS

WP-180LBS

L.C.D.

14-1-26

S/o. Dalriada

GLASGOW REPORT N^o 45641

RECEIVED

RECEIVED

W1104-0362



© 2020

Lloyd's Register
Foundation

R. C. Boilers N. 829

W1104-0362