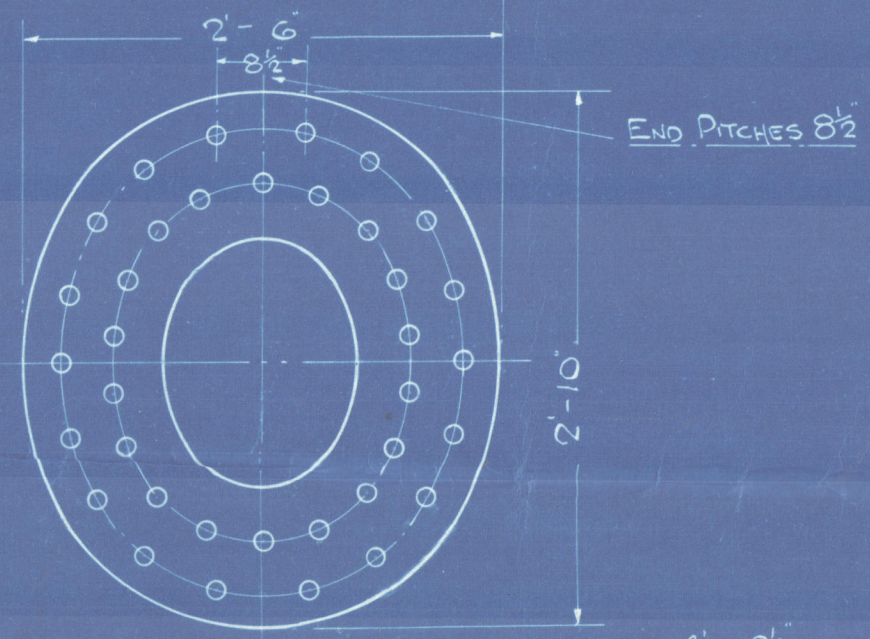
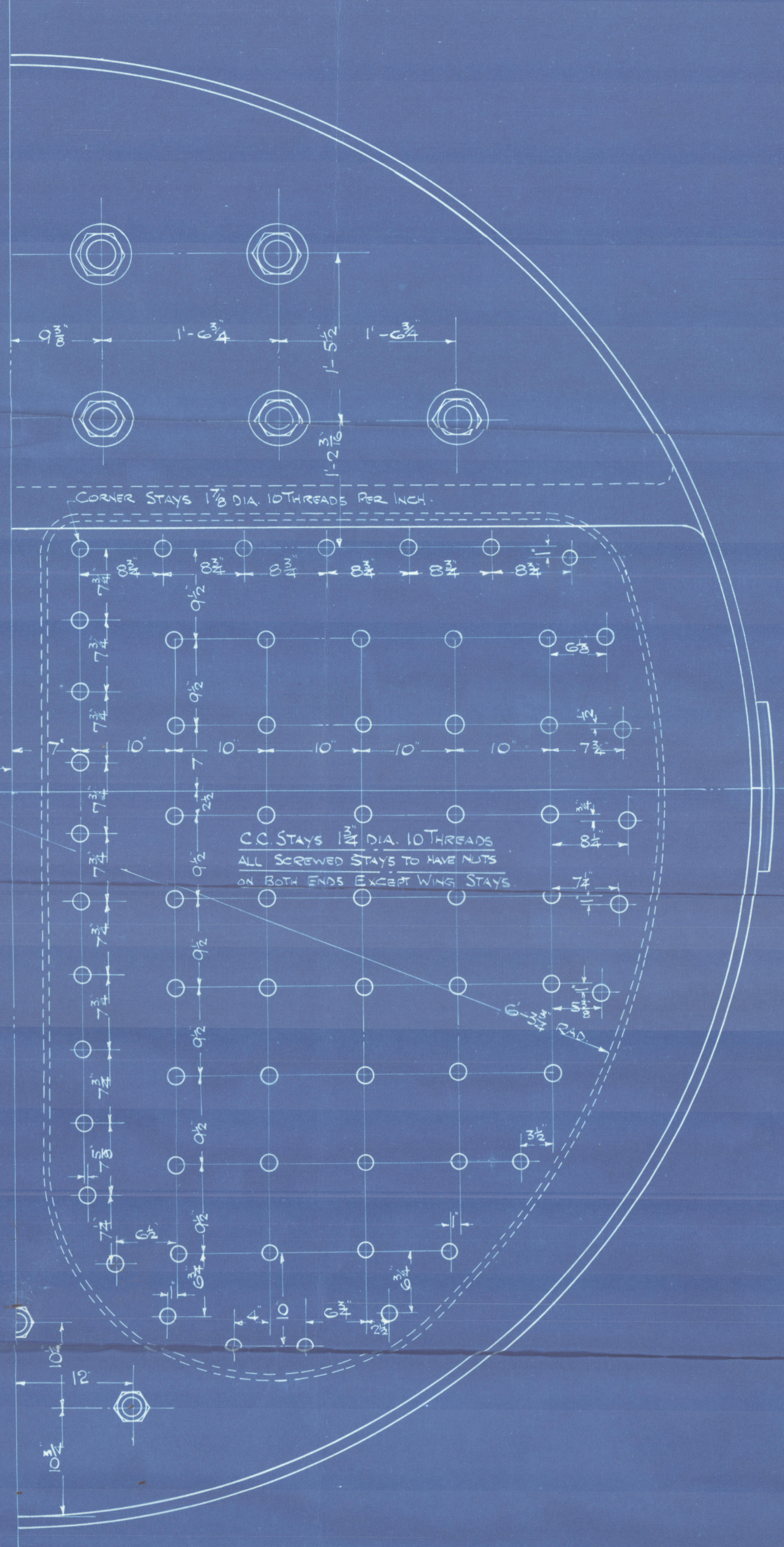
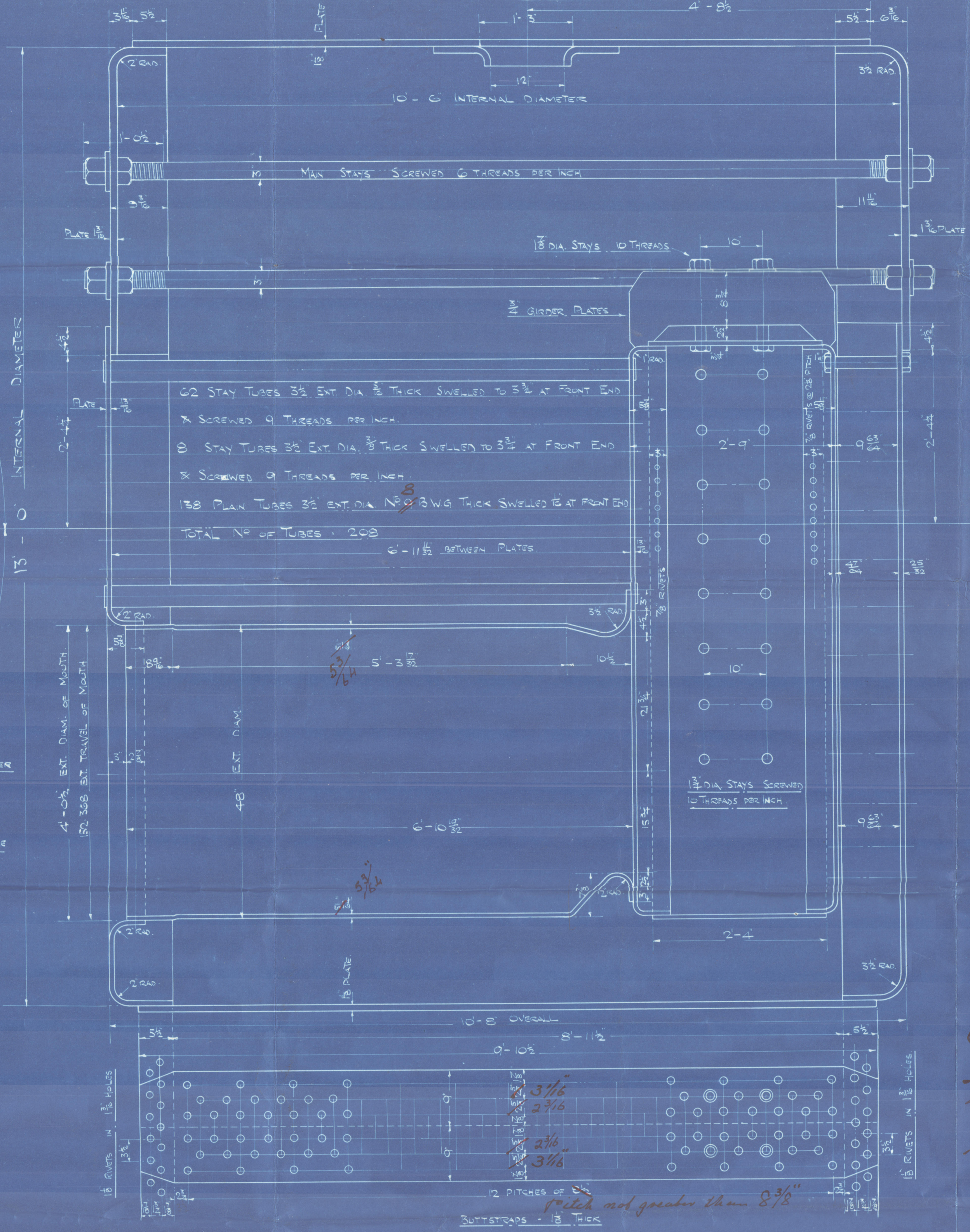
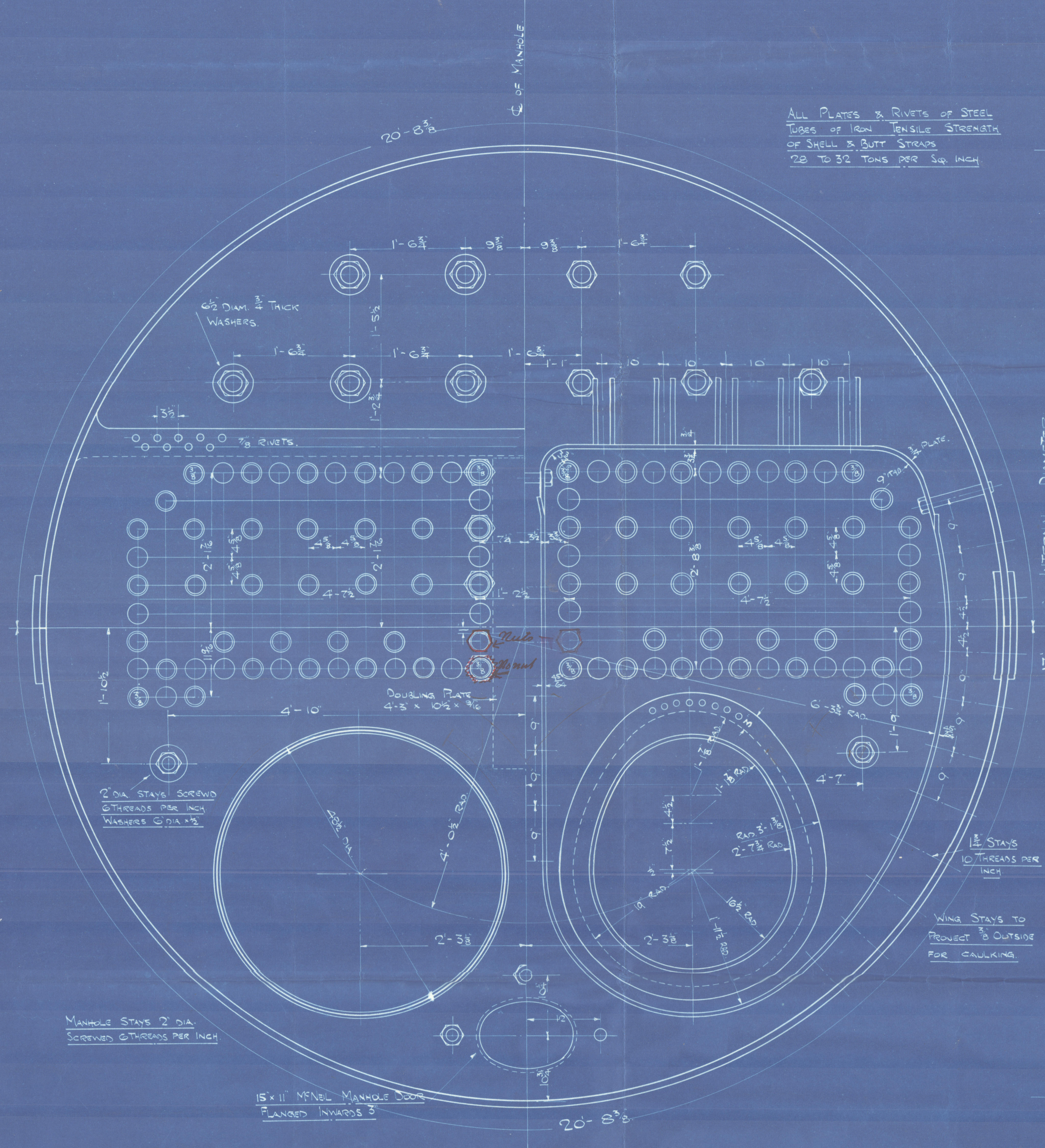


26/4/24

MC NEIL MANHOLE DOOR 16" x 12"
STAYS SCREWED THREE DOOR WITH NUTS
INSIDE. FASSED SADDLE DOUBLE RIVETED
TO SHELL. RIVETS 1/8" DIA AT 8 1/2" PITCH
AT OUTER ROW. FLANGED IN 3"
COMPENSATING RING 1/8" THICK



ALL PLATES & RIVETS OF STEEL
TUBES OF IRON TENSILE STRENGTH
OF SHELL & BUTT STRAPS
22 TO 32 TONS PER SQ. INCH

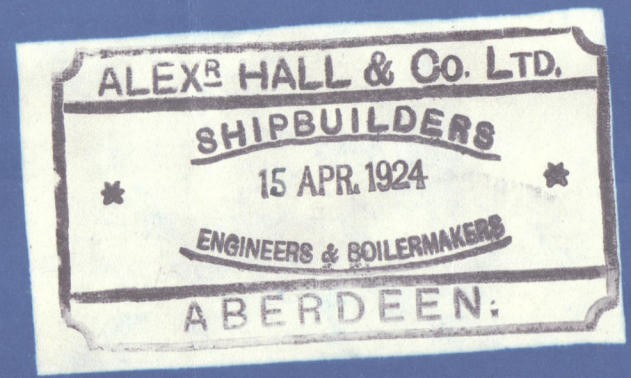


HEATING SURFACE IN FURNACES	78 #
COMB. CHAMBERS	163 #
TUBES	1366 #
TOTAL HEATING SURFACE	1607 #
AREA OF GRATE 5'-6" BARS	42.6 #
RATIO G.A. TO H. SURFACE	1:37.2

MARINE BOILER

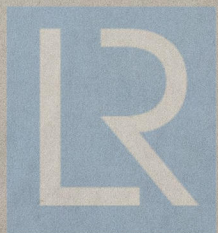
WORKING PRESSURE 190 LBS. PER SQ. INCH.
TO STANDARD REQUIREMENTS
SCALE - 1" = ONE FOOT

JOB	Nos.
271.	



A Hall & Co. Ltd.
Boiler No. 241.

"Culex"
abn. 13651



© 2020

Lloyd's Register
Foundation
W1004-0330