

WORKING PRESSURE 160 LBS. PER SQ. INCH. TO LLOYDS REQUIREMENTS

ALL PLATES, MAINSTAYS, RIVETS & SCREWSTAYS OF STEEL. LAPWELDED IRON TUBES.

ALL HOLES TO BE DRILLED IN POSITION

TENSILE STRENGTH OF SHELL PLATES & BUTTSTRAPS TO BE NOT LESS THAN 28½ & NOT MORE THAN 32 TONS PER SQ. INCH

## ALL OTHER PLATES

### LONGITUDINAL STAYS

IN ALL CASES THE ELONGATION IS TO BE NOT LESS THAN 20 PER CENT IN A LENGTH OF EIGHT INCHES

SCALE 1" = 1 FOOT.

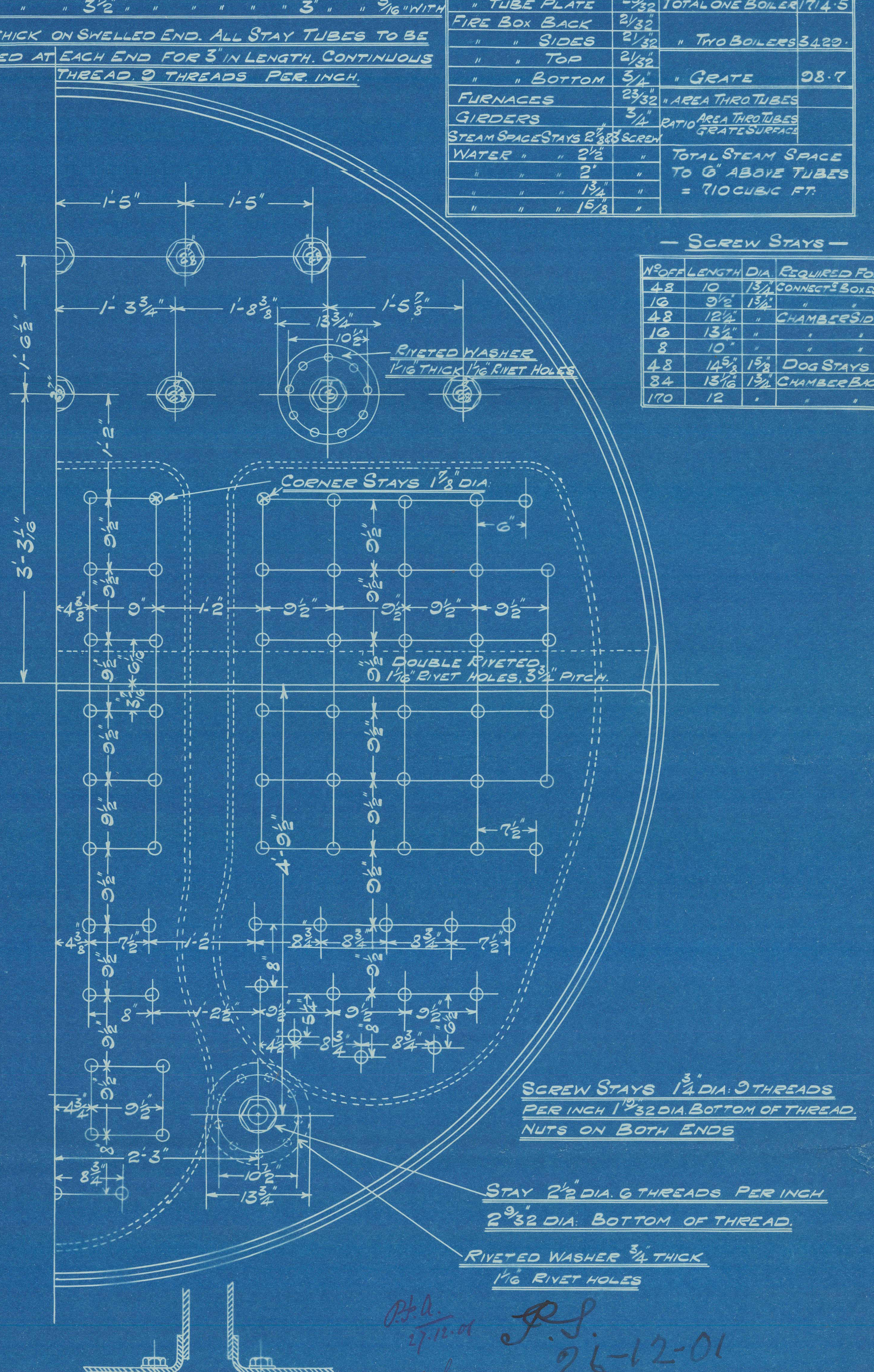
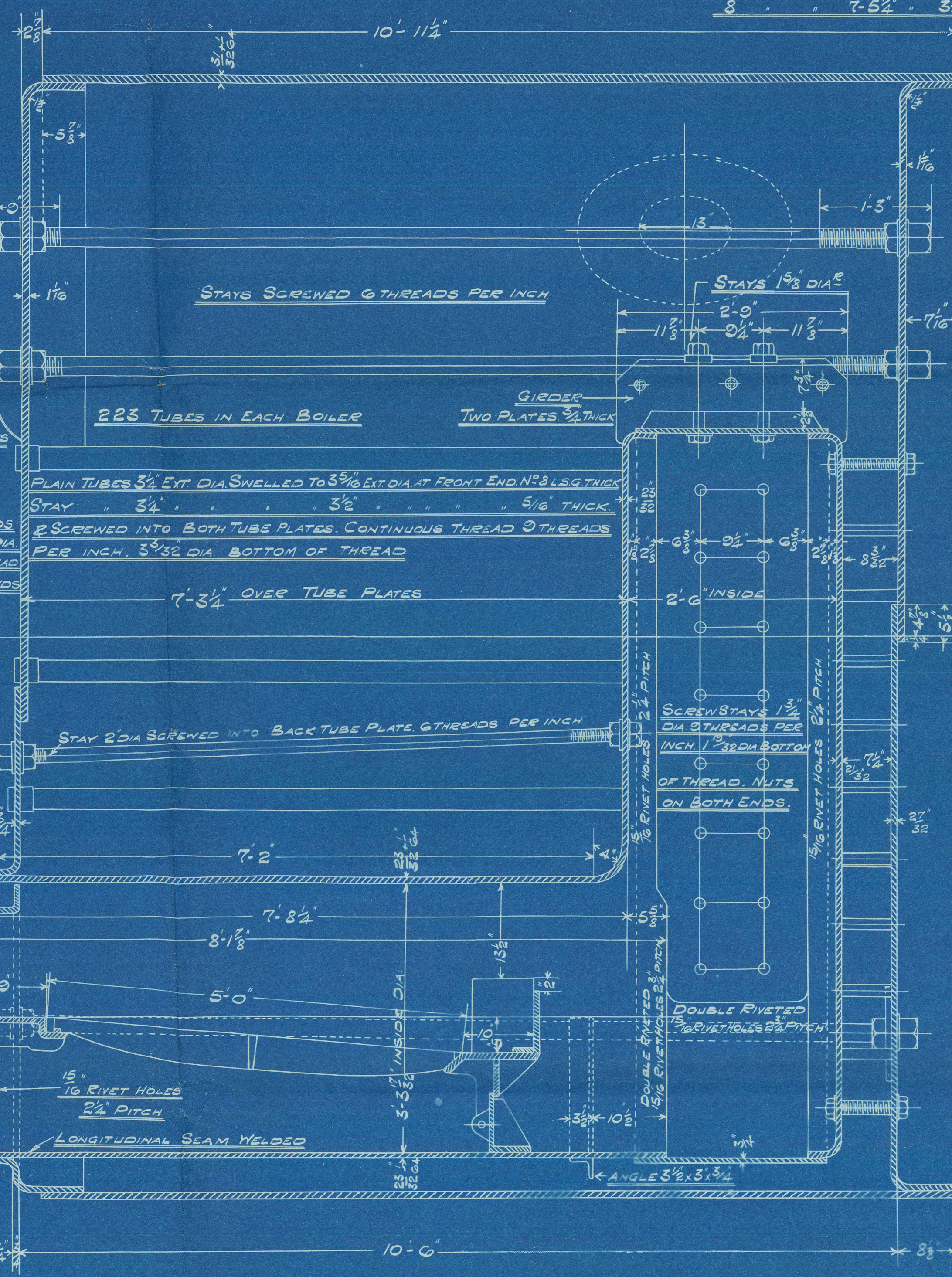
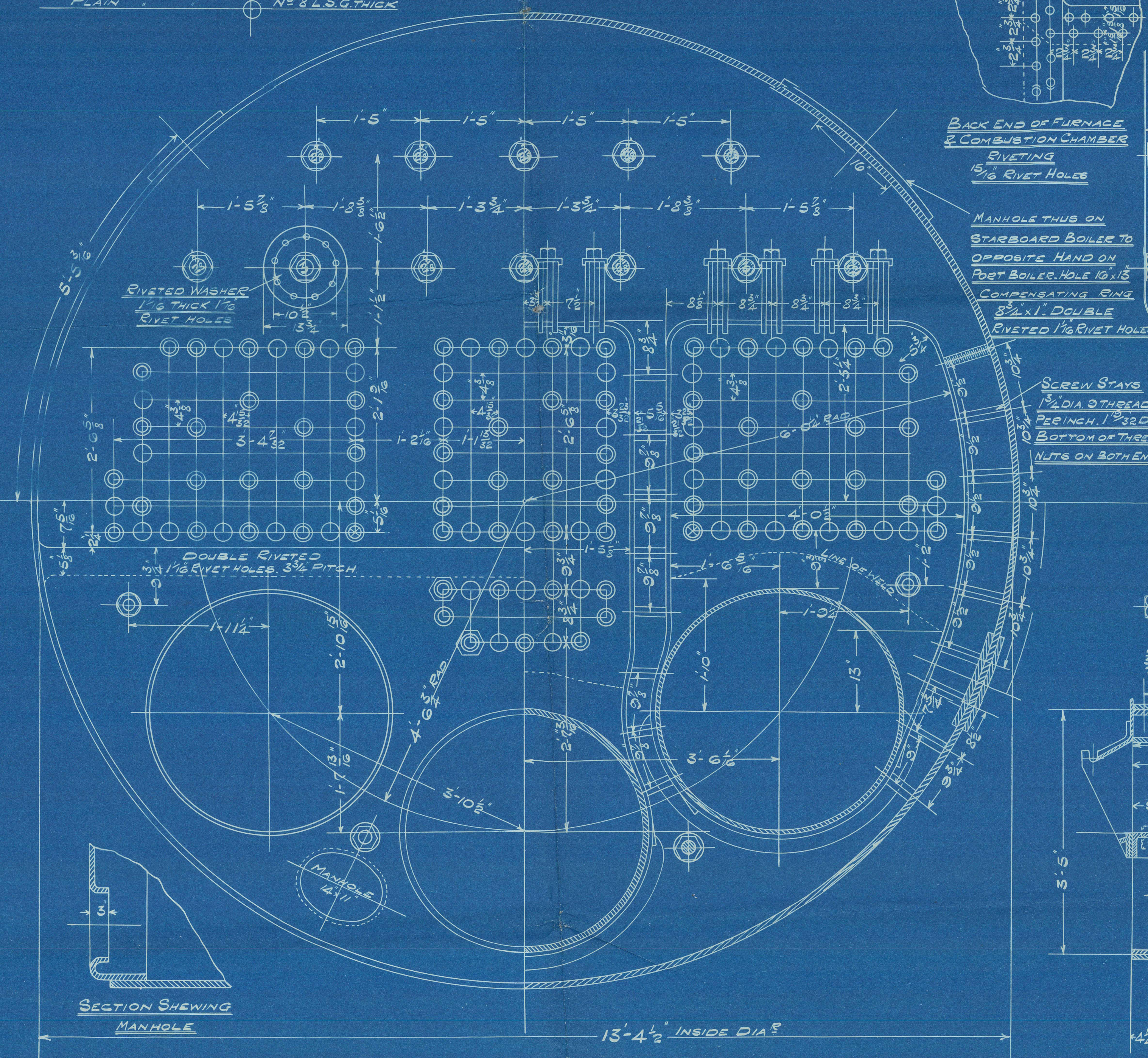
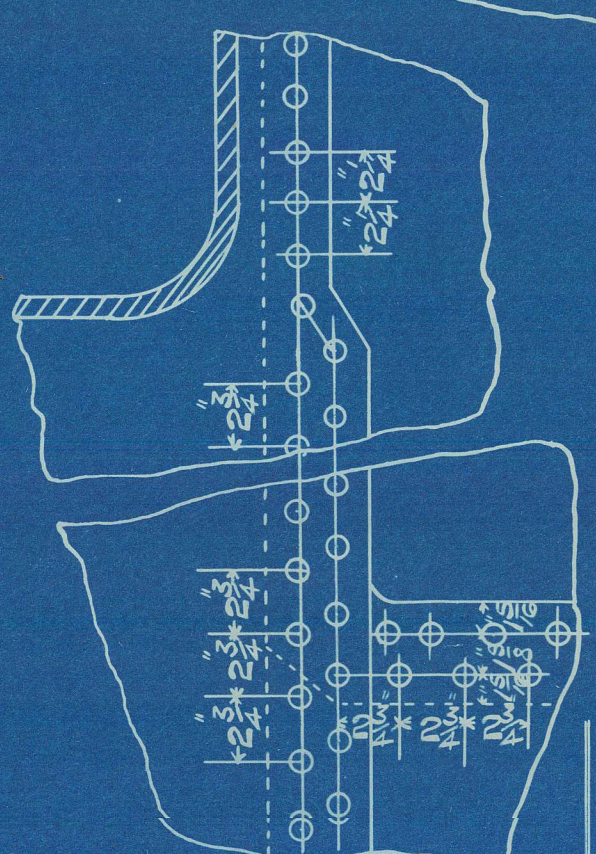
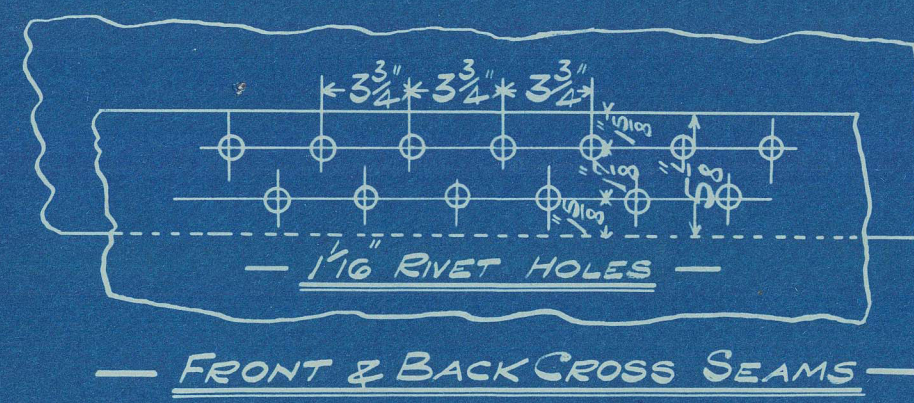
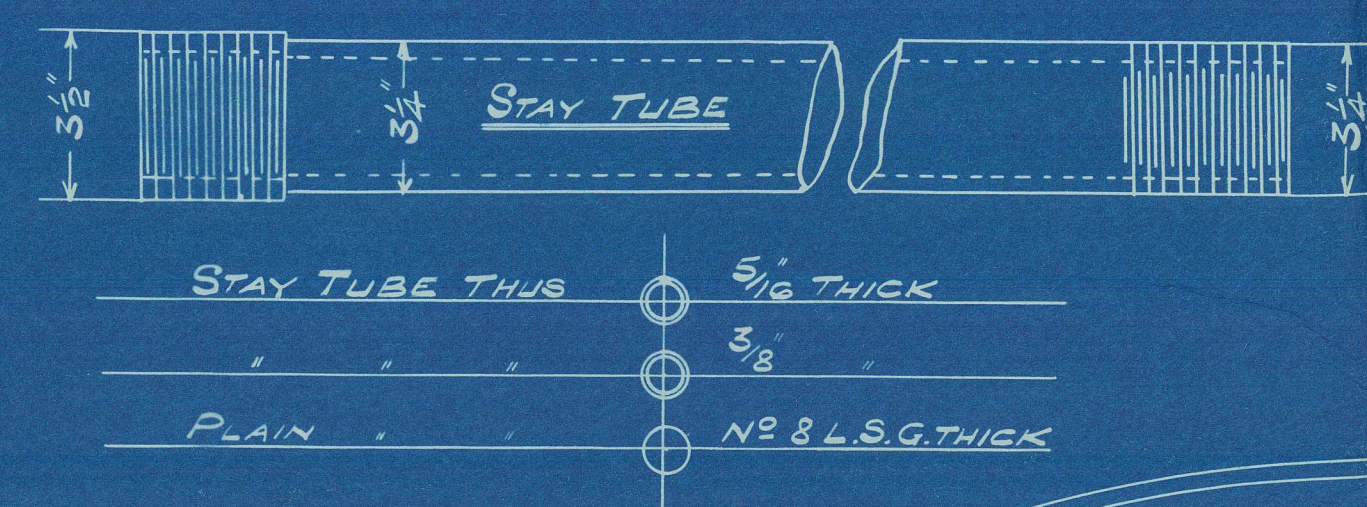
- 19 - 12 - 01. -

[illegible]

	PLATES	THICKNESS	SURFACES	SQ FT
	SHELL	5/16"	225 TUBES	1866
	SUBTUBES	3/16"	5 CHAMBERS	179
	HEADS OR	5/16"	5 SURFACES	179
	FRONT BOTTOM	3/16"	3 BACKTUBES PLATE	34.5
	BACK	2 1/2"	FRONT	27.8
	" TUBE PLATE	2 1/2"	TOTAL ONE BOLLER	714.4
	FIRE BOX BACK	3/16"		
	" SIDES	2 1/2"	" TWO BOLLERS	5423
	" TOP	2 1/2"		
	" BOTTOM	3/16"	" GRATE	28.7
	FURNACES	2 1/2"	AREA TWO TUBES	
	GRIDDERS	3/16"	AREA TWO TUBES	
	STEAM SPACE STAYS	5/16" & 3/8"	RATIO	
	WATER	" 2 1/2"	AREA TWO TUBES	
	" "	" 2 1/2"	FEATHER SURFACE	
	" "	" 1 1/2"	TOTAL STEAM SPACE	
	" "	" 1 1/2"	TO 6" ABOVE TUBE	
	" "	" 1 1/2"	= 710 QUIC FT	

### - SCREW STAYS -

N <sup>o</sup> OFF	LENGTH	DIA	REQUIRED FOR
48	10	1 3/4"	CONNECT <sup>2</sup> BOX
16	9 1/2"	1 3/4"	" "
48	12 1/2"	"	CHAMBERS ID
16	13 1/2"	"	" "
8	10"	"	" "
48	14 5/8"	1 5/8"	DOG STAYS
84	15 1/16"	1 3/4"	CHAMBER BAC
170	12	"	" "



—BOILERS N<sup>o</sup> 773—



Boilers  
14 773  
for Lloyd

W1103-0207

Messrs. J. P. Austin & Son Ltd

S.S. No 219.

Main Boilers

Geo. Clarke & Co No 443.

S.S. "Alto"



Sunderland. No 20985.



© 2021

Lloyd's Register  
Foundation

W1103-0207