

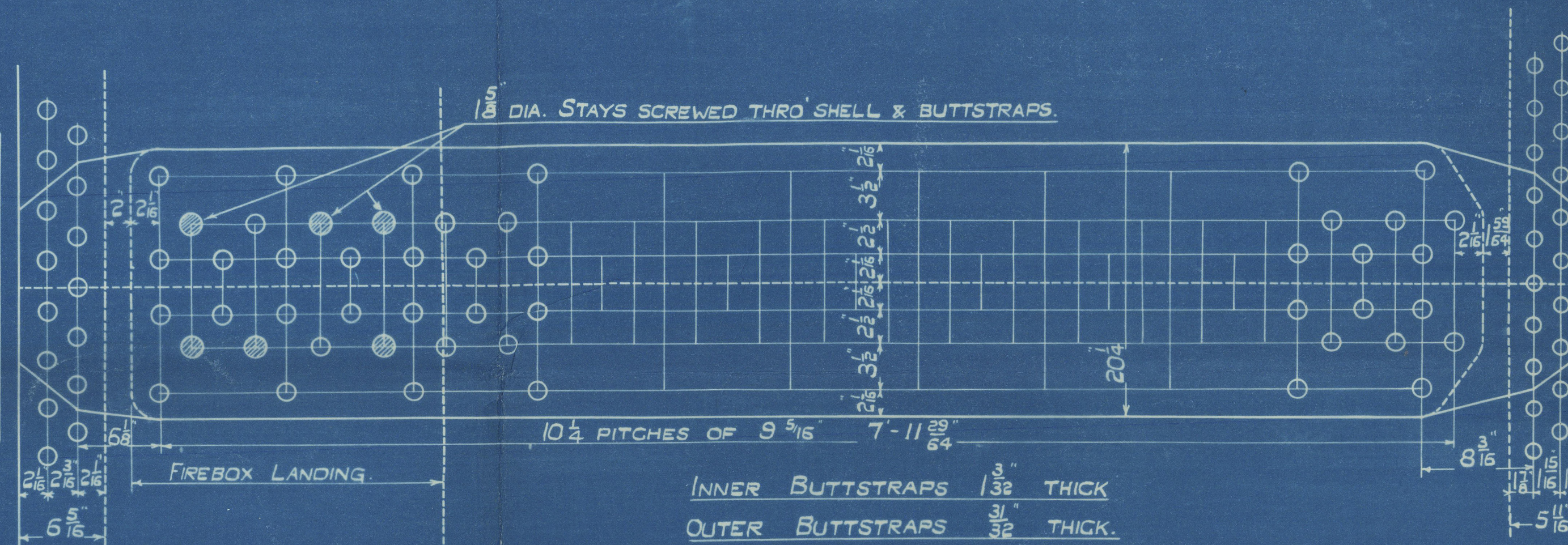
| SURFACES. | ONE BOILER |
|---------------------------------|------------|
| TUBES | 1566 # |
| FIREBOX TOP & SIDES | 132 " |
| " BACK | 73 " |
| " TUBEPLATE | 48 " |
| FURNACES | 134 " |
| TOTAL HEATING SURFACE | 1953 # |
| GRATE AREA (5' 6" BARS) 195-197 | 572 # |
| TUBE AREA 4' 3" BARS FOR 195 | 11.7 " |
| WATER AREA | 148 " |
| STEAM SPACE | 415 # |
| GRATE AREA : HEATING SURFACE | 1 : 33.8 |
| " : TUBE | 1 : 27.1 |
| " : WATER | 4.9 : 1 |
| " : STEAM SPACE | 1 : 2.55 |
| % BOILER ABOVE FIREBOX | 32.1 |
| WEIGHT OF WATER | 22 TONS |

| - RIVETING - | | | |
|----------------|--------|----------------|-----------------|
| | LONG | BACK END CIRC. | FRONT END CIRC. |
| RIVET HOLE DIA | 1 1/8" | 1 1/8" | 1 1/8" |
| PITCH | 9 1/2" | 3.68 | 3.209 |
| % PLATE | 85.2 | 62.6 | 61 |
| % RIVET | 92.1 | 50 | 52.3 |
| % COMBINED | 88.9 | — | — |

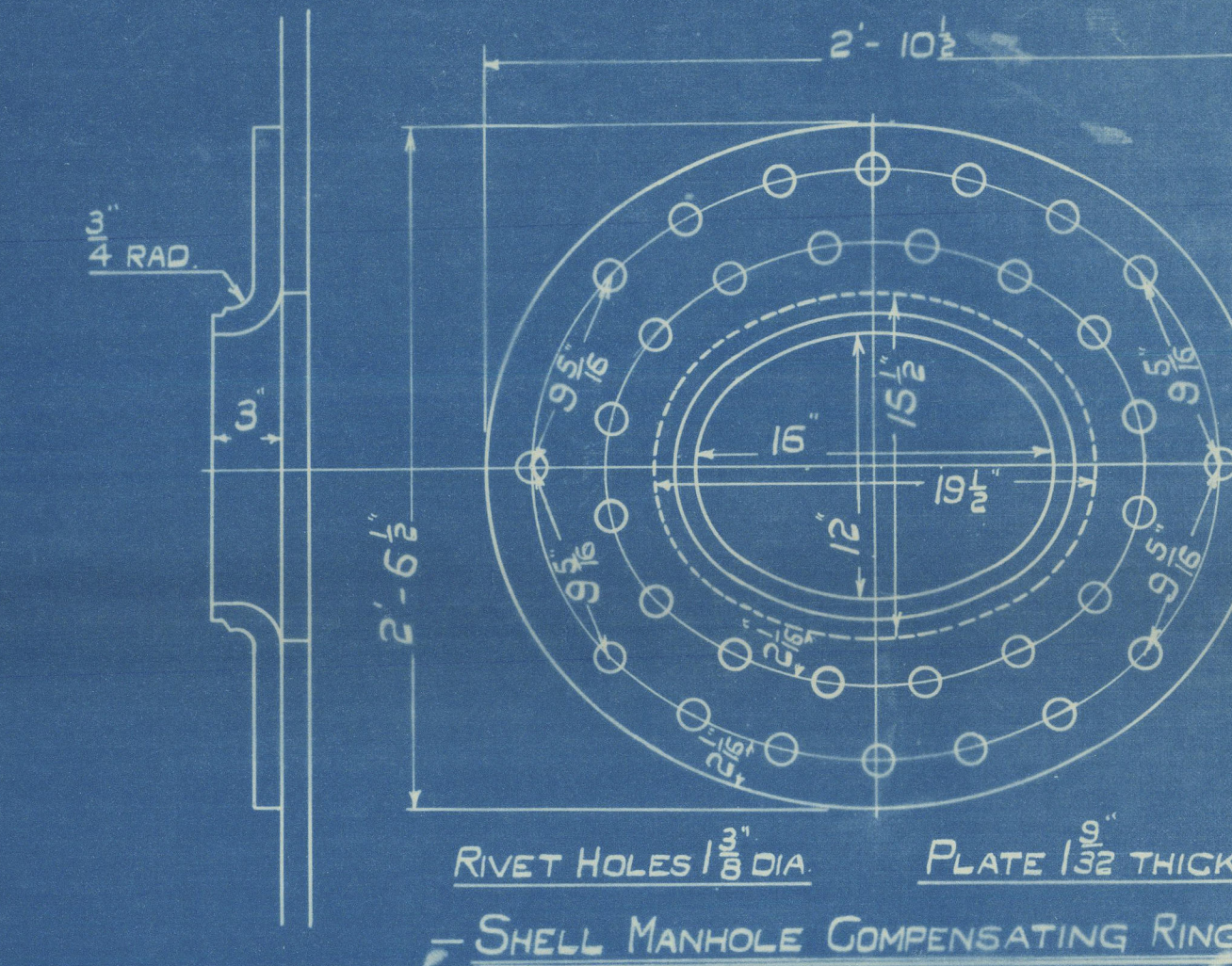
| - LIMITS OF TENSILE STRENGTH & MATERIAL - | | | |
|---|---------------|--|--|
| SHELL & BUTTSTRAPS | 29 TO 33 TONS | | |
| GIRDERS | 28 " 32 " | | |
| OTHER PLATES | 26 " 30 " | | |
| FURNACES | 26 " 30 " | | |
| MAIN STAYS | 28 " 32 " | | |
| SCREWED STAYS | 26 " 30 " | | |
| RIVET BARS | 26 " 30 " | | |

SIEMENS MARTIN STEEL

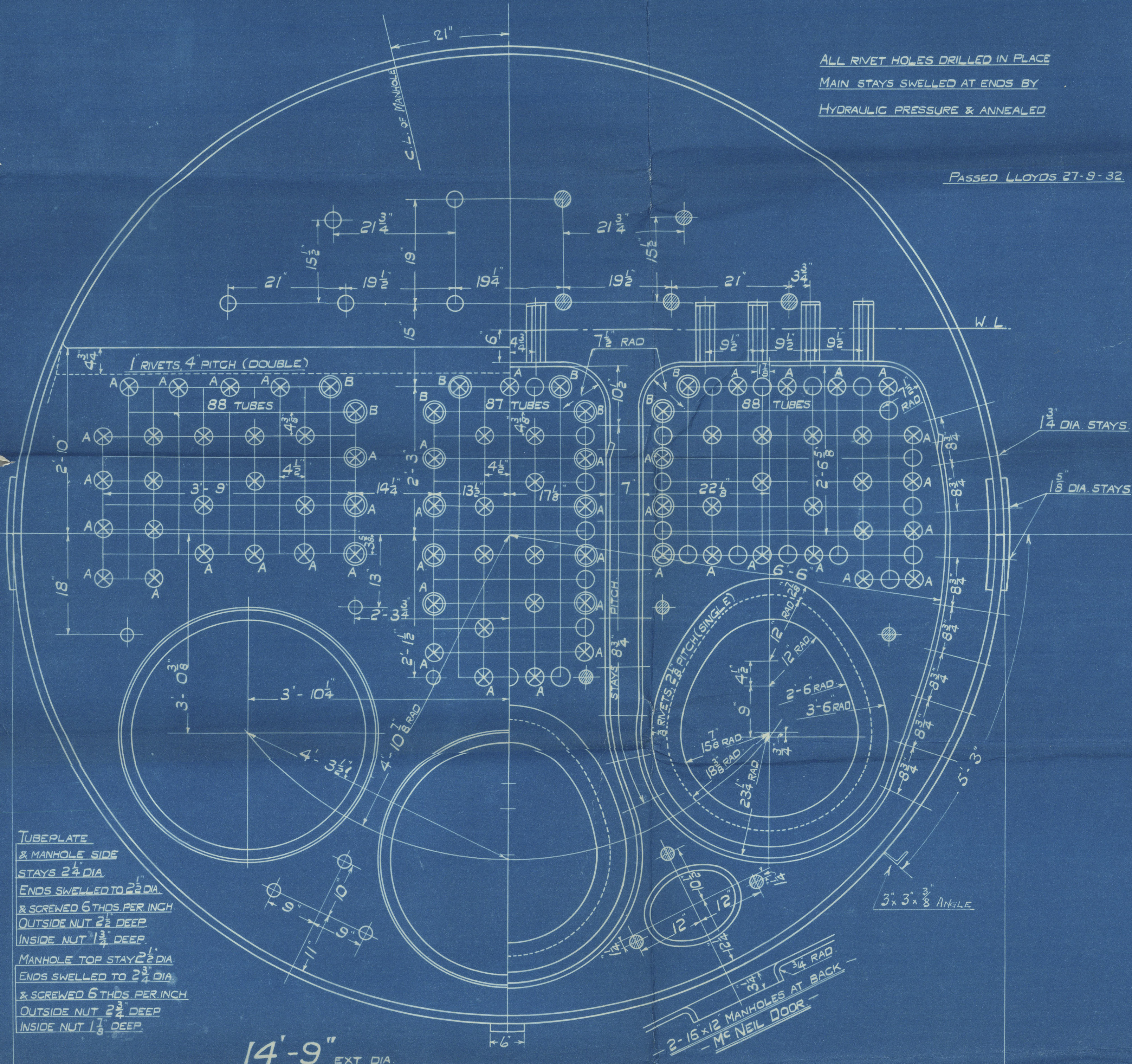
- BACK END CIRCUMF. -
150 PITCHES OF 3.68



- FRONT END CIRCUMF. -
172 PITCHES OF 3.209

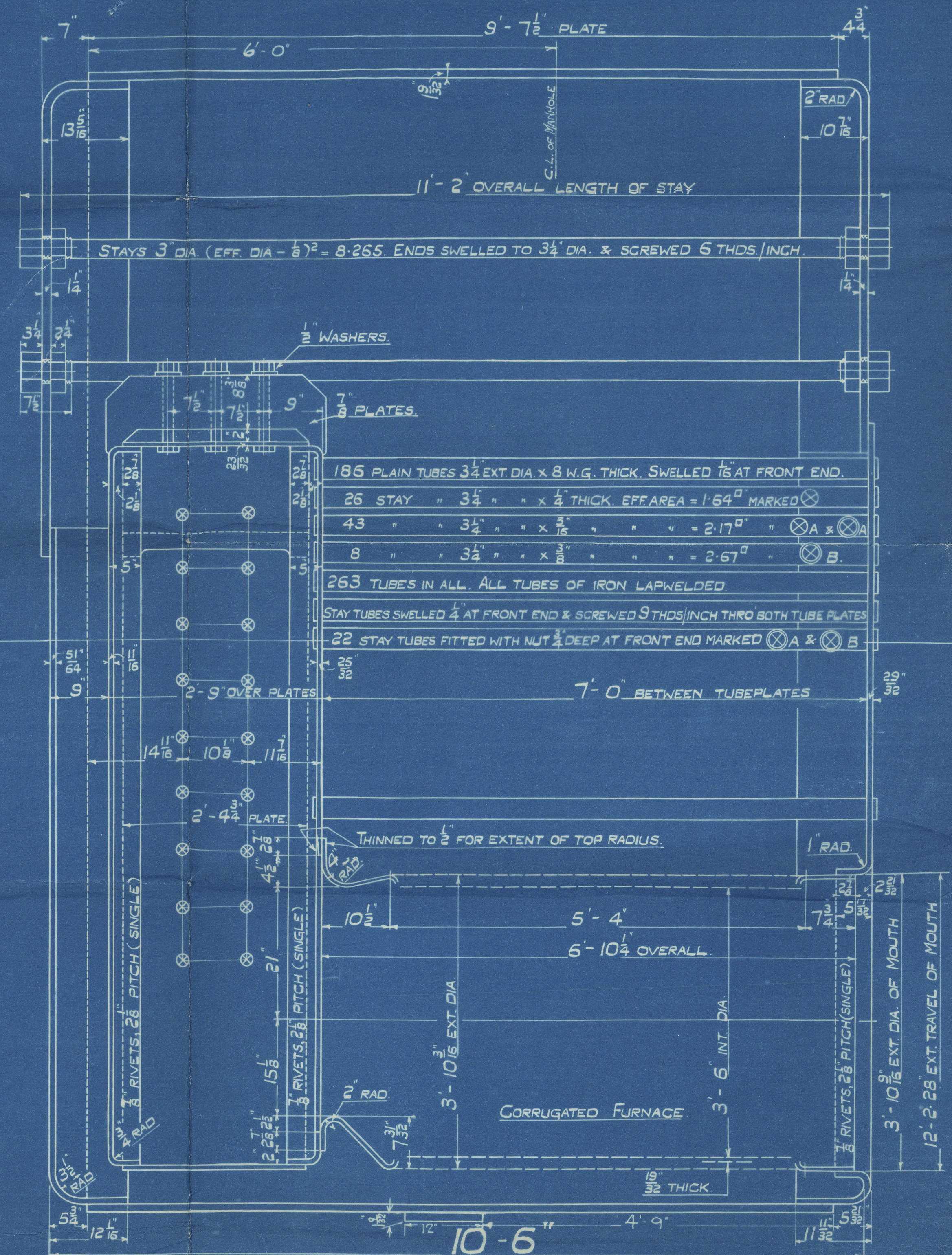


RIVET HOLES 1 3/8" DIA PLATE 1 3/8" THICK
SHELL MANHOLE COMPENSATING RING -
McNEIL DOOR -



ALL RIVET HOLES DRILLED IN PLACE
MAIN STAYS SWELLED AT ENDS BY
HYDRAULIC PRESSURE & ANNEALED

PASSED LLOYDS 27-9-32



- MAIN BOILER -

- ONE OFF EACH CORNER -

- CONZ No 955 - 970 - 998 - 1014

- WORKING PRESSURE 200 LBS. PER SQ. INCH. -

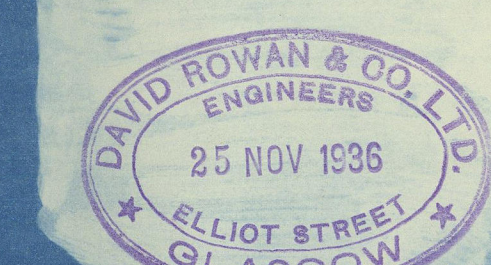
- TEST 350

- TO PASS LLOYDS SURVEY -

- SCALES: 1" & 1/2" = ONE FOOT -

ALL FIREBOX STAYS SCREWED THRO' BOTH PLATES & NUT FITTED AT EACH END EXCEPT STAYS FROM WING FIREBOX TO SHELL & STAYS MARKED 'C' IN BACK BOTTOM END WHICH PROJECT 3/8" & ARE CAULKED. ALL 1 1/8" & 1 3/8" NUTS 3/8" DEEP EXCEPT ON GIRDER TOPS WHERE THE OUTSIDE NUTS ARE 1 1/8" DEEP. ALL 1 1/8" & 2" NUTS 1" DEEP.

| POSITION | MARK | DIA | (DIA - 267) | SCREWED THRO' INCH |
|---------------------------|------|--------|-------------|--------------------|
| TOP & BACK | 0 | 1 1/8" | 1.844 | 9 |
| SIDES | 8 | 1 1/8" | 2.199 | 9 |
| BACK WIDE SPACE & TOP ROW | 10 | 1 1/8" | 2.585 | 9 |
| BACK TOP CORNER | 12 | 2" | 3.003 | 9 |



- MAIN BOILER -

OTT 39396
TRIN 50565
TRACED 23rd SEPT. 1932
W110-0023

Glasgow

David Rowan & Co. Ltd.

Contract No. 1014

Main Boiler.

For.

The Burntisland Shipbuilding Co. Ltd.

Yard No. 216

"NORMAN QUEEN" - (D. Rowan's 1014)

GLASGOW REPORT No 59292

FE. 2th 19507.

W110-0083



© 2020

Lloyd's Register
Foundation