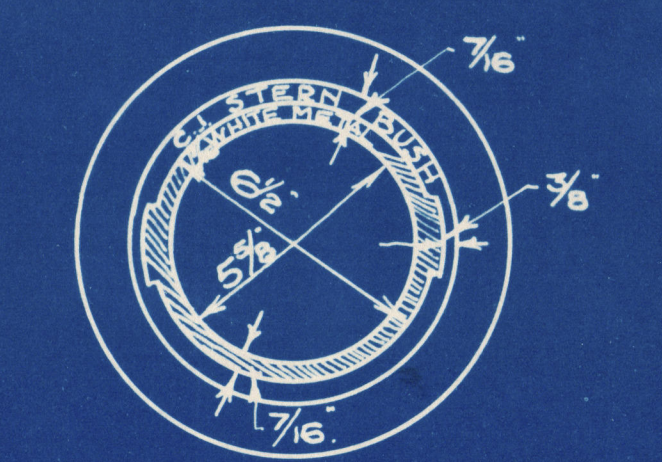
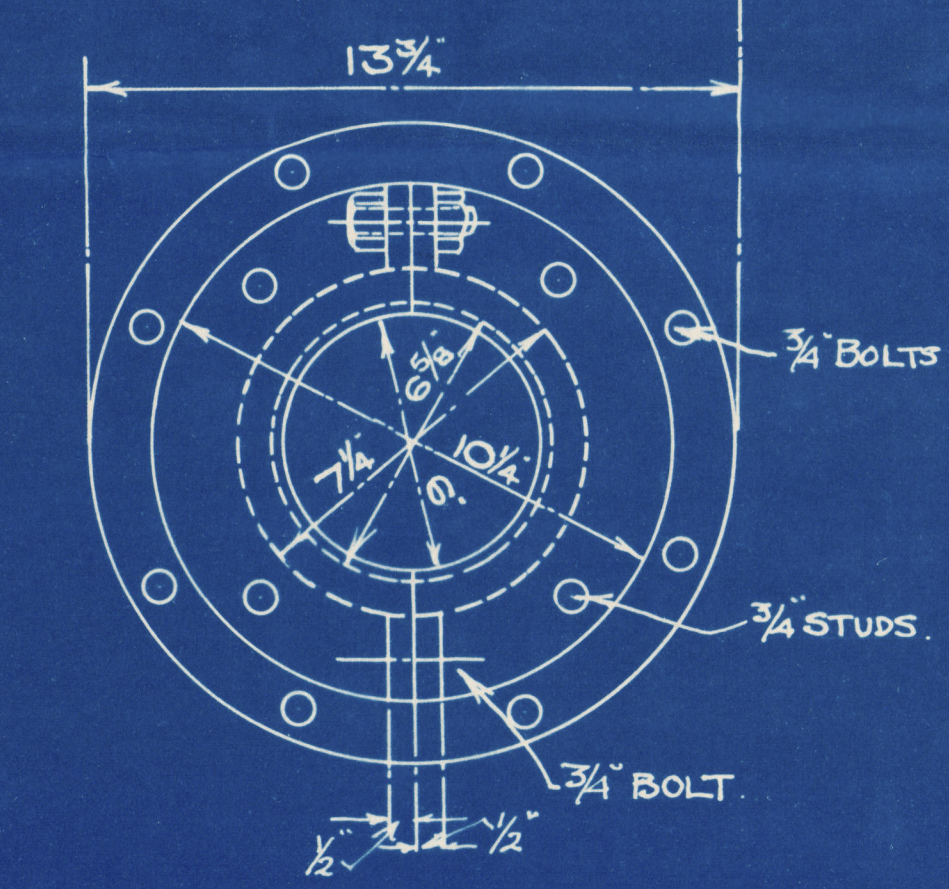


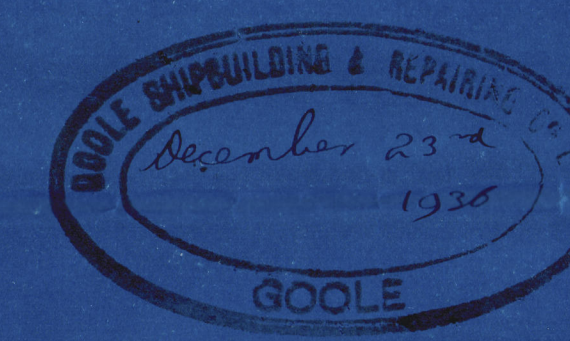
SECTION A-B



SECTION C-D



STERN GLAND



Nº 327. STERN-TUBE & SHAFTING.

SCALE: 3"-1 FOOT.

DEUTZ 350 B.H.P. ENGINE AT 350 R.P.M.-TYPE R.V.G.M.345.

PROPELLER OF C.I. 5'-5" DIAM.
4 BLADES.

GOOLE SHIPBUILDING & REPAIRING CO. LTD.
GOOLE.

J.R.P.
29/12/36

PLAN Nº 2937.
PRINT Nº 9742.

W11-0149



HULL

Goole S.B. & R. Co. Ltd

327

Stem tube & Shafting

S.S. MV "Begerin"

HULL REPORT No. 48037



© 2019

Lloyd's Register
Foundation

W11-0149