

22-3-37  
51.3.37 - 100 5946  
18 APR 1938 - 100 5961/19

# S.S. N° 583. DECKS.

405' 0" L.B.P. x 57' 11 1/2" B.M.L.D. x 27' 10" D.M.L.D. 2<sup>nd</sup> D.K.  
36' 4" = U. D.K.

COMPLETE SUPERSTRUCTURE TYPE.

CLASS 100 A1 LLOYDS with Treboard

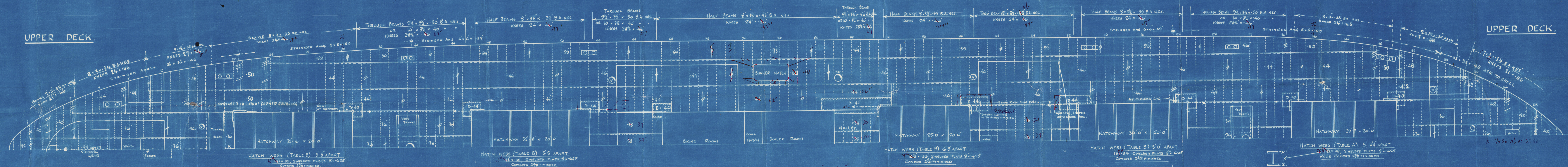
Scale: 1/8" = 1 Foot.

## FORECASTLE DECK. (ABOVE SUPERSTRUCTURE)



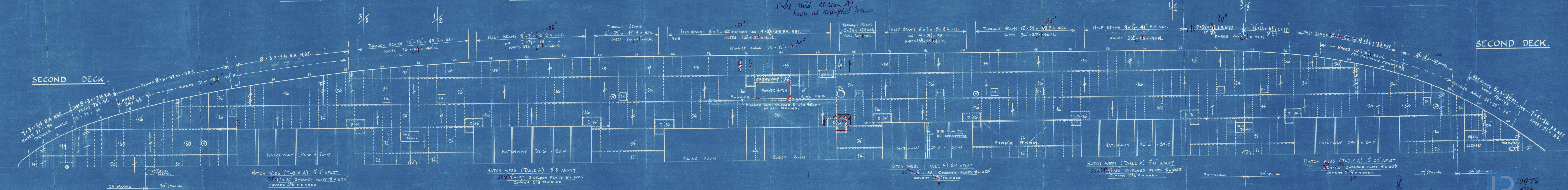
Truffin to act  
on dk support.

## UPPER DECK.



## UPPER DECK.

## SECOND DECK.



## SECOND DECK.



FOR SS ARGYLL

SUNDERLAND.

MESSRS. J. L. THOMPSON & SONS LTD  
YARD N<sup>o</sup> 583.

DECKS



ALSO NO 591. (Sec's letter 3.9.37).

ALSO N<sup>o</sup> 594/5/6/7/9

"Royal Sceptre"

SUNDERLAND RPT. NO. 32270.

"Brethwalda"

SUNDERLAND RPT. NO. 32601.

W.S 18

"Dinstergorn"

SUNDERLAND RPT. NO. 32912.



© 2019

Lloyd's Register  
Foundation

W11-0085