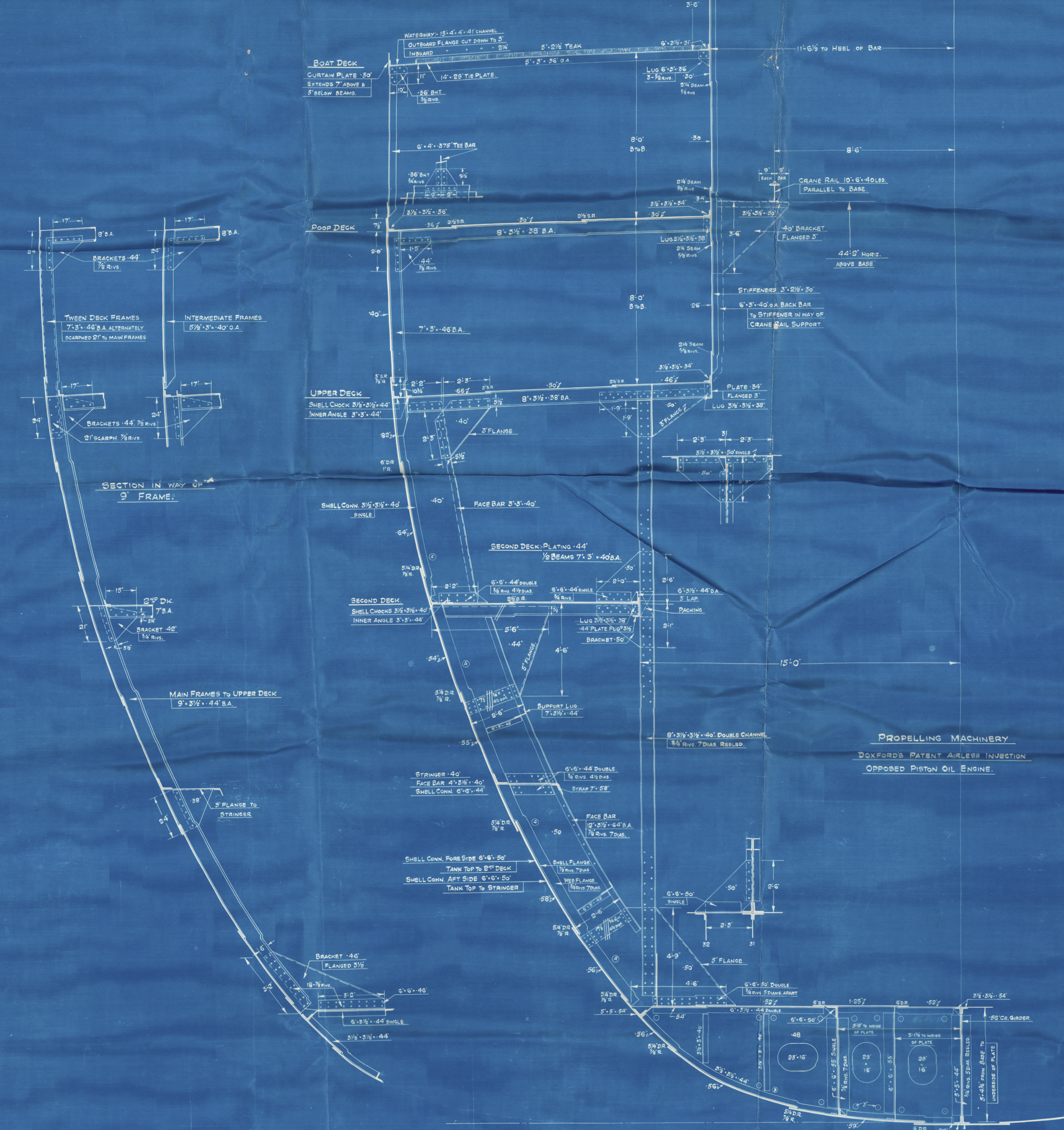
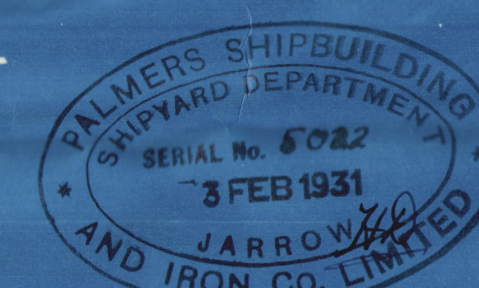


M.V. "BRITISH SCIENCE".  
M.V. "BRITISH SPLENDOR".  
M.V. "BRITISH STRENGTH".

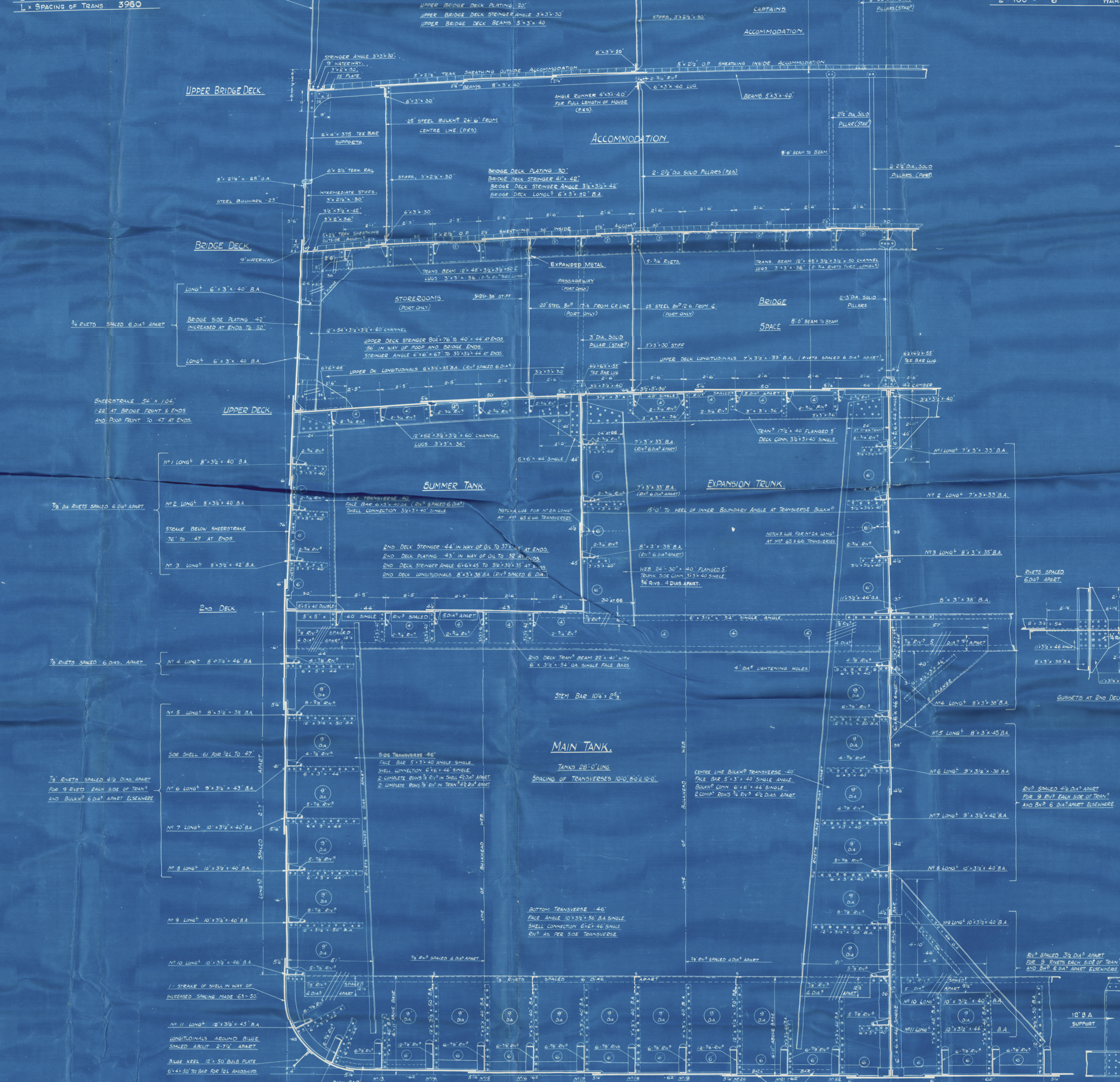
PRINCIPAL DIMENSIONS - 440'-0" BP x 59'3" BML x 55'0" D MID TO UPPER DECK  
TO CLASS 100A LLOYDS (LONG FRAMING) CARRYING PETROLEUM IN BULK.  
SCALE - 1/8" INCH = 1' FOOT.



SECTION THRO' ENGINE SPACE.  
FRAME NO 31.  
LOOKING AFT.

MIDSHIP SECTION.

NUMERALS -  
DEPTH "D" 55  
L x D 145'00  
L x (B+D) 405'00  
L x D 13'55  
L x SPACES OF TRIMS 59'00

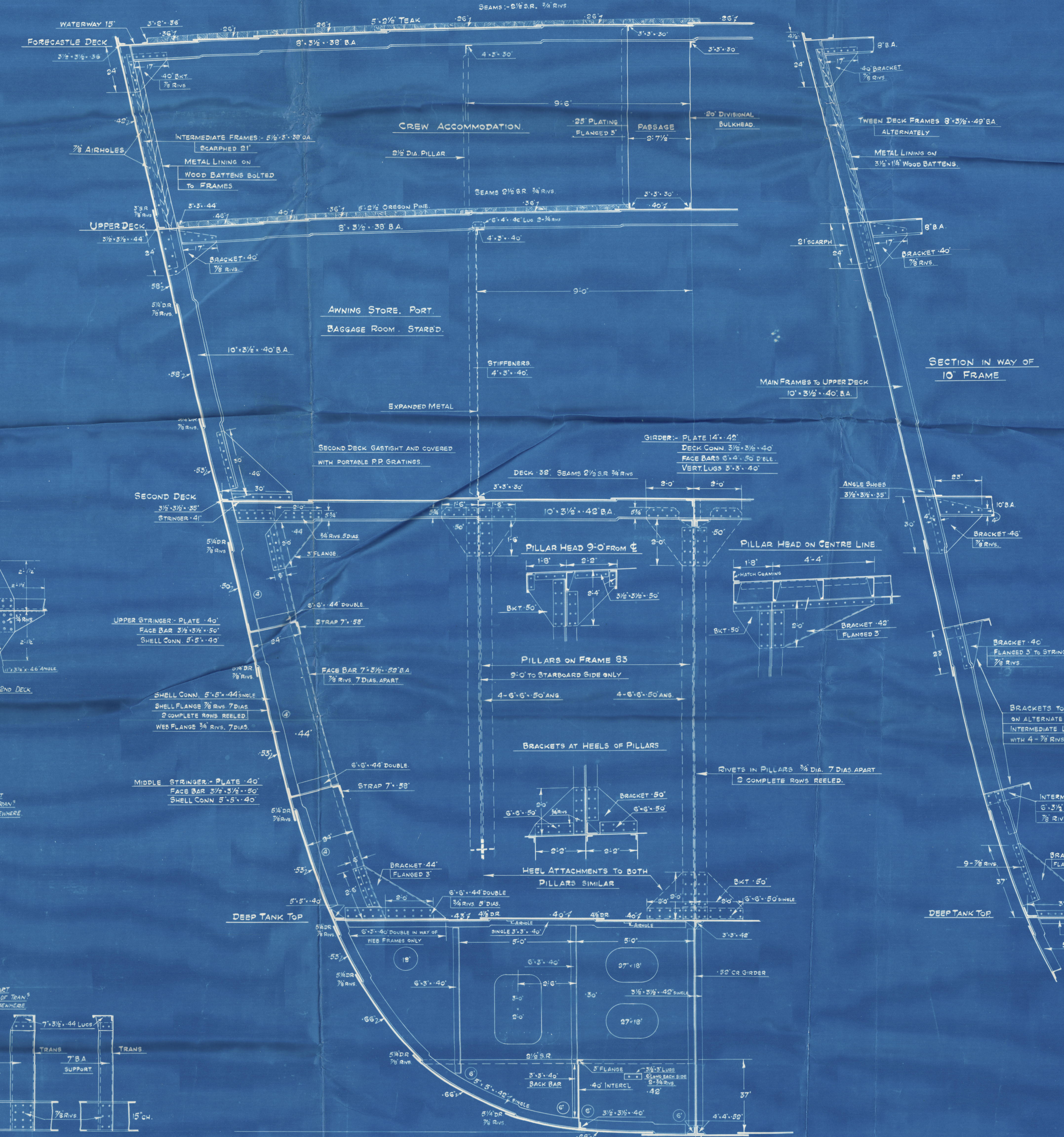


CONSTRUCTIONAL SECTIONS.

SECTION THRO' FORE HOLD.

FRAME NO 87.  
LOOKING FORWARD.

EQUIPMENT -  
NUMERAL 48518  
1 BOWER ANCHOR STOCKLESS 79% CENTS (incl 10' OWNERS EXTRA)  
1 " " " 79% CENTS  
1 " " " 65 CENTS  
1 STREAM " " " 80% CENTS  
500 PINS 5/16" STUB QUIN CABLE  
100 " 5/8" STEEL WIRE TOWLINE  
2-100MM 8" MANILLA HAWSEY  
2-100 " 8" WARPS





Palmers

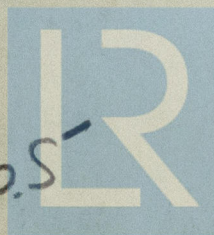
1003 - 4 - 5-

*Sections of vessel as built.*

MV "British Science"  
NEWCASTLE ON TYNE.

Report No. 86769.

W11-006.S



© 2019

Lloyd's Register  
Foundation