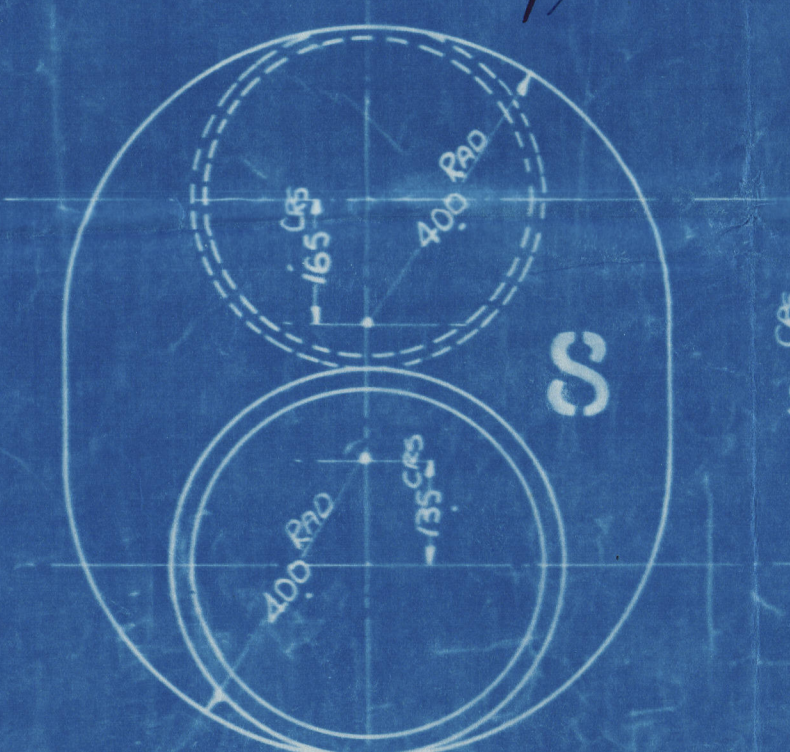


JOURNALS	=	423%
^{HOLLOW} CENTRE PINS	=	460%
SIDE PINS	=	437%



FOR FURTHER DETAILS OF CRANKSHAFTS SEE DRG N° 4329

W11 - 0041

C. No.

~~4778~~ ~~603~~ ~~1715~~ ~~1111~~ 182-3

SUNDERLAND.

Doxford & Sons

£s. 182 3

Blankraft.

Drawing to A331

M. S. BRITISH SCIENCE

" BRITISH SPLENDOUR
Nwc Rpt No. 86469.

SUNDERLAND RPT. No. 30561

M.V. " BRITISH SPLENDOUR

NEWCASTLE ON TYNE.

Report No. 86895.

M.V. " BRITISH STRENGTH "

NEWCASTLE ON TYNE.

Report No. 8446

W11-0041 Lloyd's Register