

M.O.P. 5 B.A. Nº 1559.

MIDSHIP SECTION.

APPROVED BY LLOYD'S WITH MODIFICATIONS IN RED, 19/3/28.

EQUIPMENT.

ANCHORS - 4-OFF, EACH 3 CWT. (STOCKLESS)

CABLE - 1/2" STUD LINK - 4 LENGTHS, EACH 30 FATHOMS.

MOORING ROPES - 4" MANILLA - 4 LENGTHS, EACH 15 FATHOMS.

DIMENSIONS.

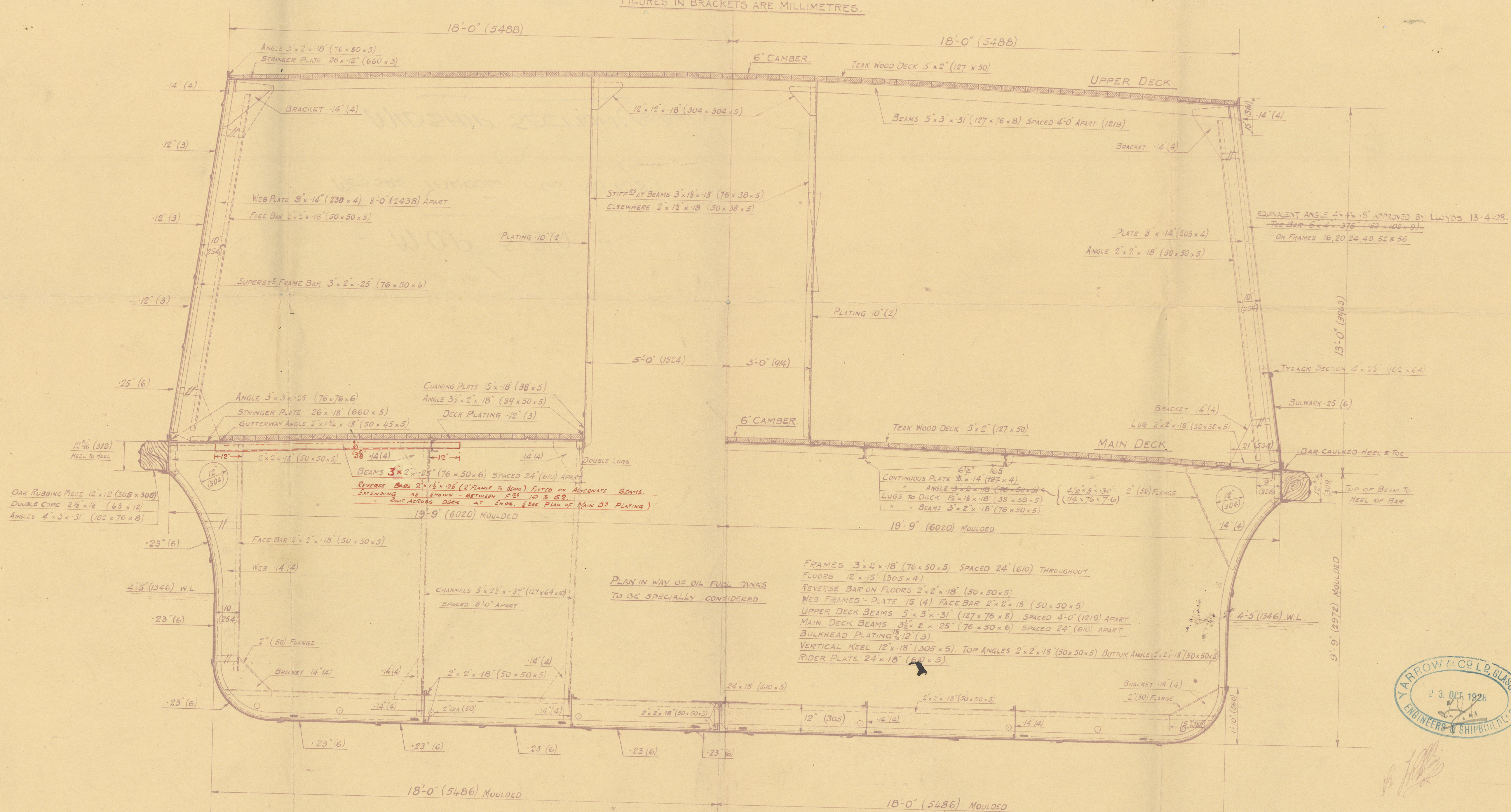
LENGTH OVERALL (INCL. RUBBING PIECE)	147'-1" = 44.83 METRES.
LENGTH B.P.	135'-0" = 41.14
BREADTH MLD AT MAIN DECK	39'-6" = 12.04
BREADTH EXTREME (OVER RUBBING PIECE)	41'-7 1/2" = 12.68
BREADTH MLD AT L.W.L.	36'-0" = 10.97
DEPTH MLD	9'-9" = 2.97

SCALE 1/4"

FIGURES IN BRACKETS ARE MILLIMETRES.

CLASS A1 "FOR FERRY SERVICE ON THE RIVER PARANA"
& BUENOS AIRES TO COLONIA.

NOTE! THIS DRAWING MAY BE MODIFIED IN MINOR
DETAILS AS THE WORK PROCEEDS.



Nº 639/27. A.



© 2020
Lloyd's Register
Foundation

W1099-0118

- M.O.P. 5 B.A. -

MESSRS YARROW & CoS No 1559

MIDSHIP SECTION (AS BUILT)

GLASGOW REPORT No. 48537

RETAIN



© 2020

Lloyd's Register
Foundation