

# BUILDERS No 58. STEEL DONKEY BOILER.

WORKING PRESSURE 110 LBS/SQ IN.  
SCALE 1 1/2 INCH TO A FOOT

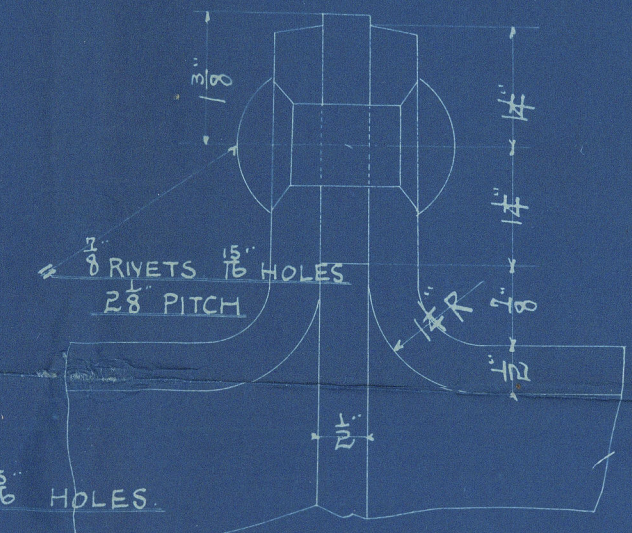
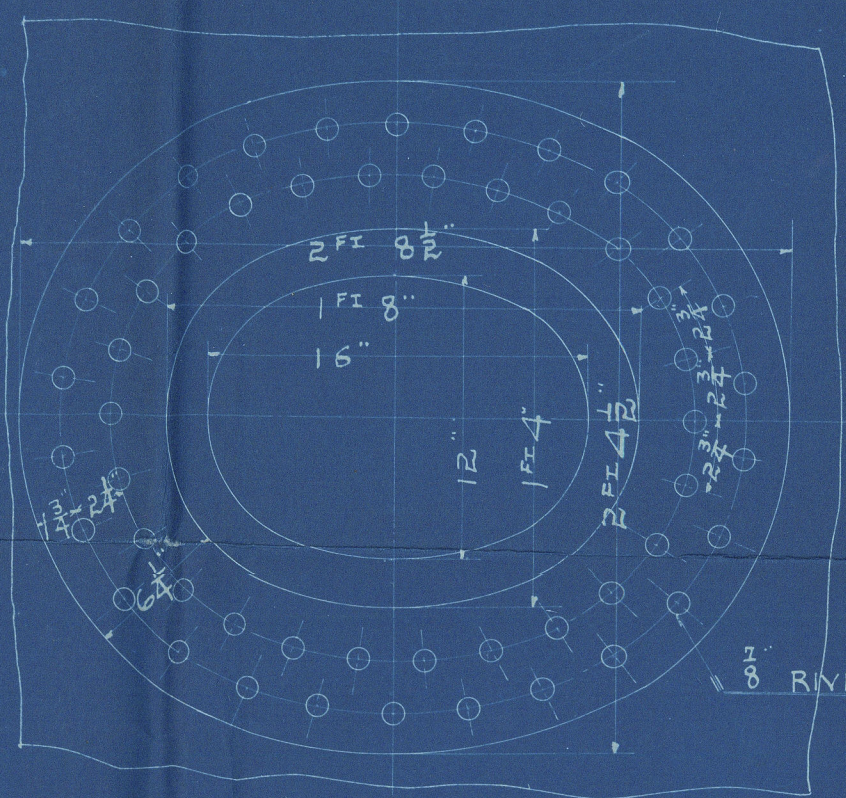
*Duplicate of No. 57*

PRINCIPAL DIMENSIONS	
MEAN DIA. OF BOILER	3 FT 0
MEAN LENGTH OF BOILER	2 FT 6
INSIDE DIA. OF FURNACE	4 FT 8
LENGTH OF FIRE GRATE	4 FT 8
HEATING SURFACE	
FURNACES	47.223
TUBES	578.243
COMB CHAMBERS	76.730
TOTAL	702.202
GRATE AREA	23.33
RATIO OF HS/GA	30.10

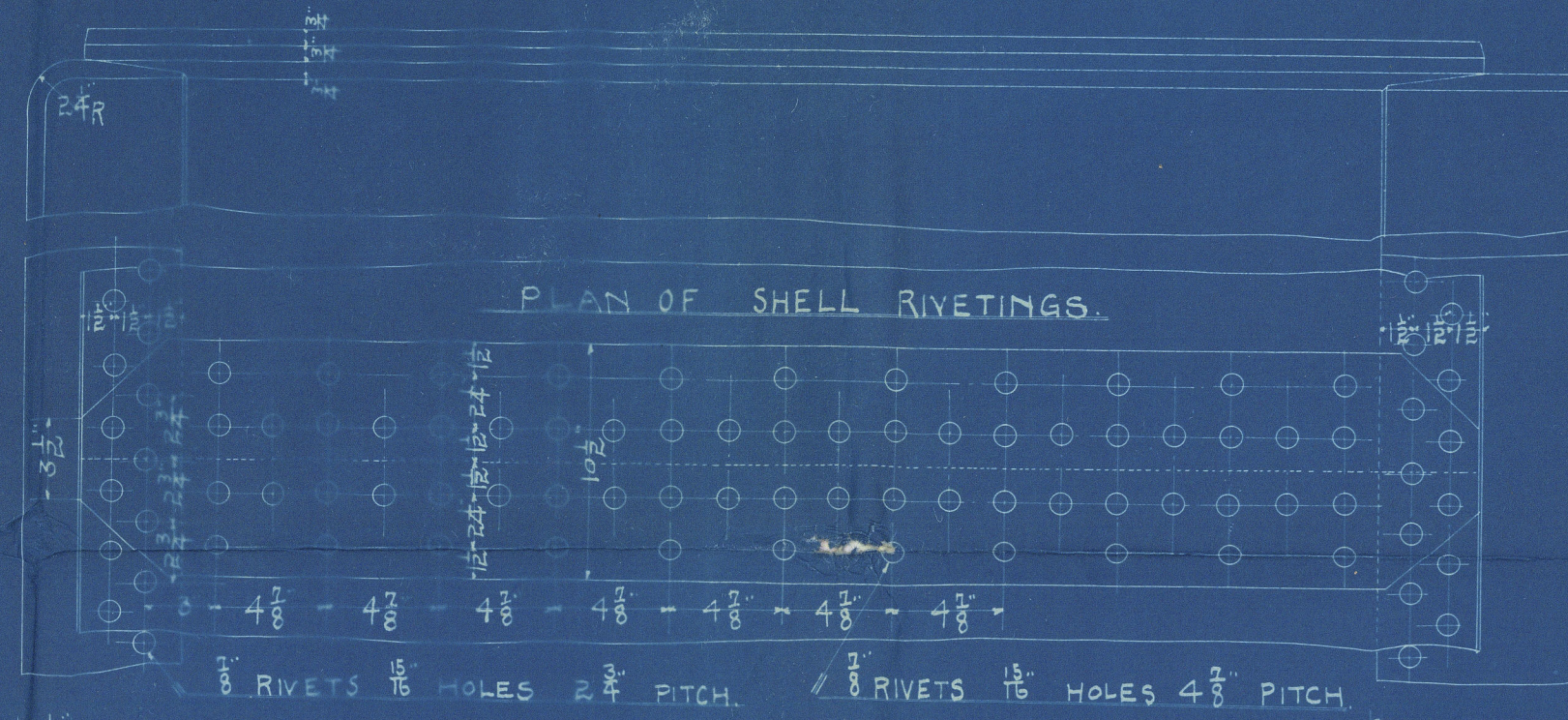
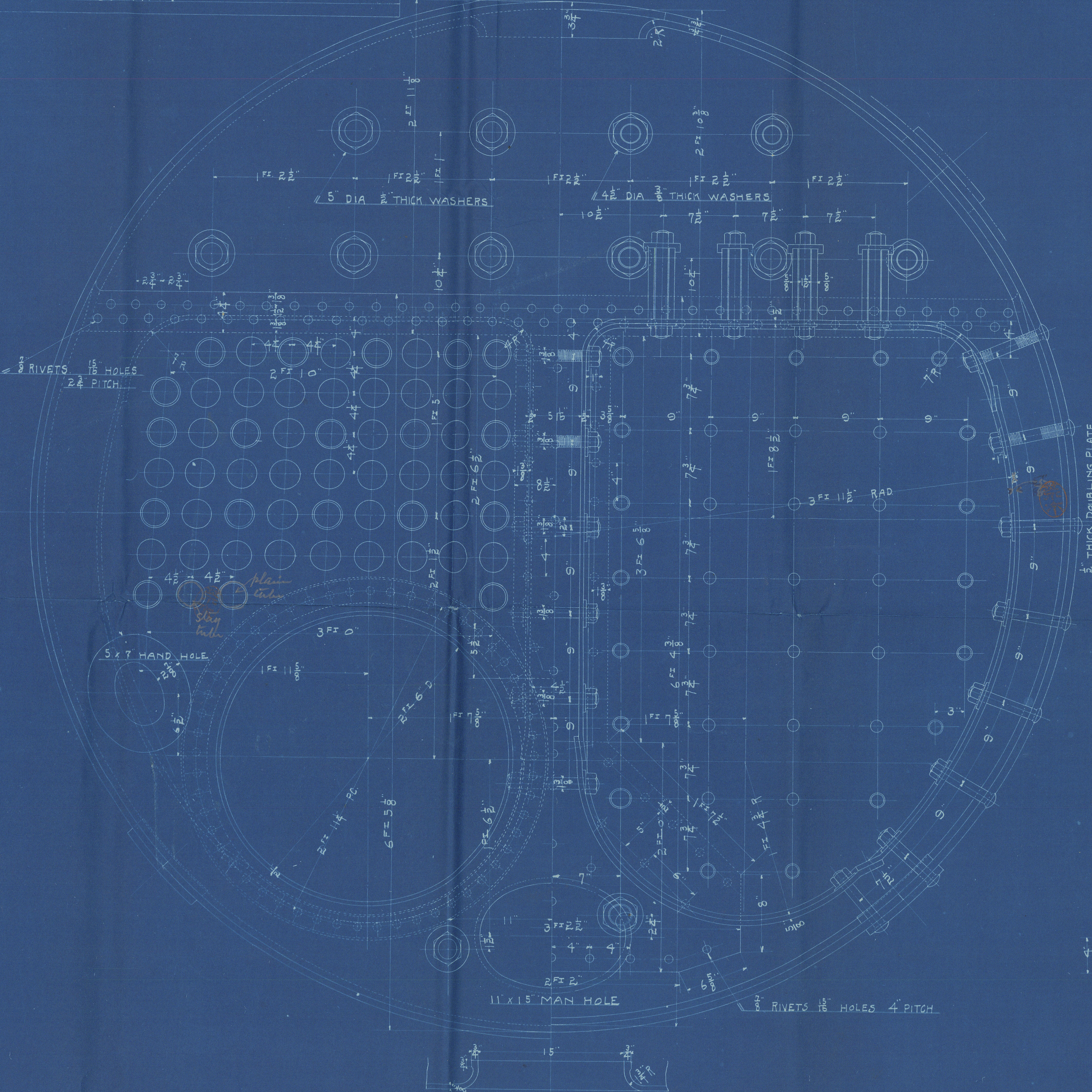
LONGITUDINAL SEAMS  
DOUBLE RIVETED DOUBLE BUTT STRAP JOINT  
8 RIVETS 1/2 HOLES 4 3/8 OUTER PITCH  
THICKNESS OF SHELL PLATE 1/2

CIRCUMFERENTIAL SEAMS  
DOUBLE RIVETED LAP JOINT 8 RIVETS  
1/2 HOLES 3 1/2 PITCH

16 x 12 MAN HOLE

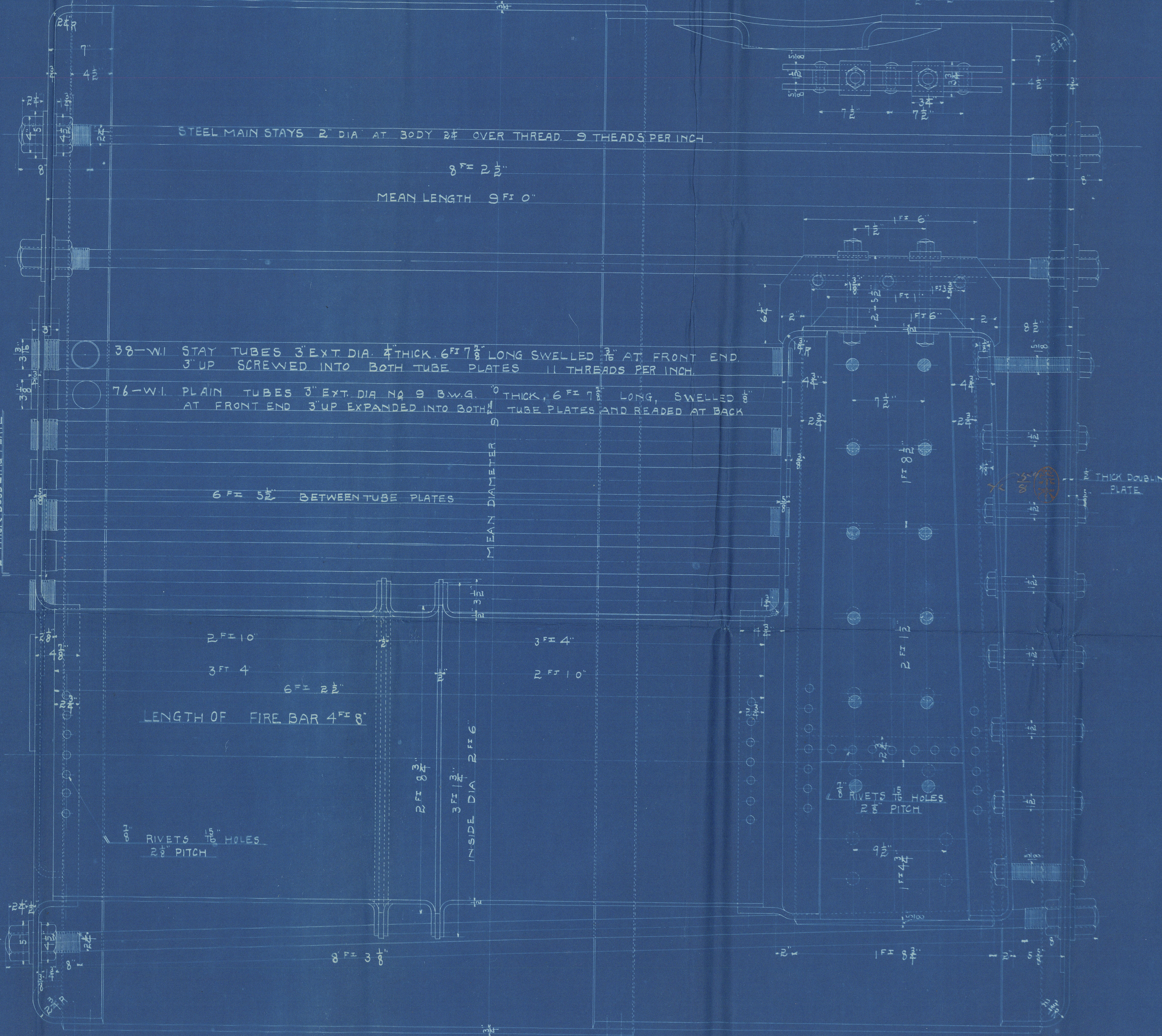
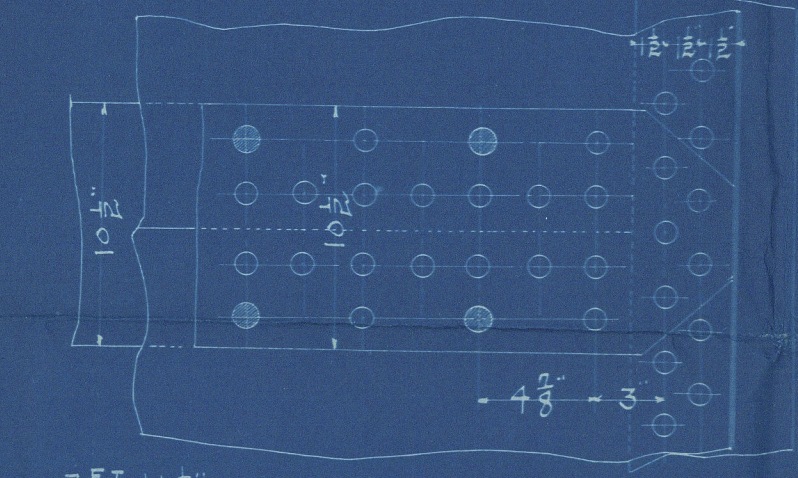


ADAMSON JOINT FOR FURNACE



PLAN OF SHELL RIVETINGS.

SCREW STAYS	
4 - 1 1/2	DIA 11 THREADS PER INCH
30 - 1 1/2	DIA 11
25 - 1 1/2	DIA 11
44 - 1 1/2	DIA 11



STEEL MAIN STAYS 2 DIA AT BODY 3/4 OVER THREAD 9 THREADS PER INCH

8 FT 2 1/2

MEAN LENGTH 9 FT 0

38-WI STAY TUBES 3 EXT DIA 4 THICK 6 FT 7 1/2 LONG SWELLED 1/2 AT FRONT END 3 UP SCREWED INTO BOTH TUBE PLATES 11 THREADS PER INCH

76-WI PLAIN TUBES 3 EXT DIA 4 THICK 6 FT 7 1/2 LONG SWELLED 1/2 AT FRONT END 3 UP EXPANDED INTO BOTH TUBE PLATES AND READED AT BACK

6 FT 5 1/2 BETWEEN TUBE PLATES

MEAN DIAMETER

2 FT 10

3 FT 4

LENGTH OF FIRE BAR 4 FT 8

8 RIVETS 1/2 HOLES 2 1/2 PITCH

3 FT 4

2 FT 10

INSIDE DIA 2 FT 6

8 FT 3 1/2

8 RIVETS 1/2 HOLES 2 1/2 PITCH

1 FT 8 1/2

2 FT 1 1/2

1 FT 8 1/2

2 FT 1 1/2

1 FT 8 1/2

2 FT 1 1/2

1 FT 8 1/2

2 FT 1 1/2

1 FT 8 1/2

2 FT 1 1/2

1 FT 8 1/2

2 FT 1 1/2

1 FT 8 1/2

2 FT 1 1/2



Donkey Boiler.

No. 58.

Matsuo Iron Works  
Nagasaki.

S. S. "Tama Maru"

Nagasaki Rept. No. 1174.

RECEIVED



© 2020

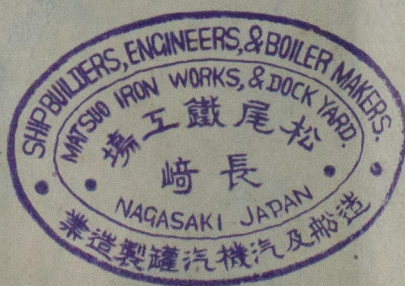
Lloyd's Register  
Foundation

W1099-0063



no 58.

Donkey Boiler.



W1099-0063



© 2020

Lloyd's Register  
Foundation