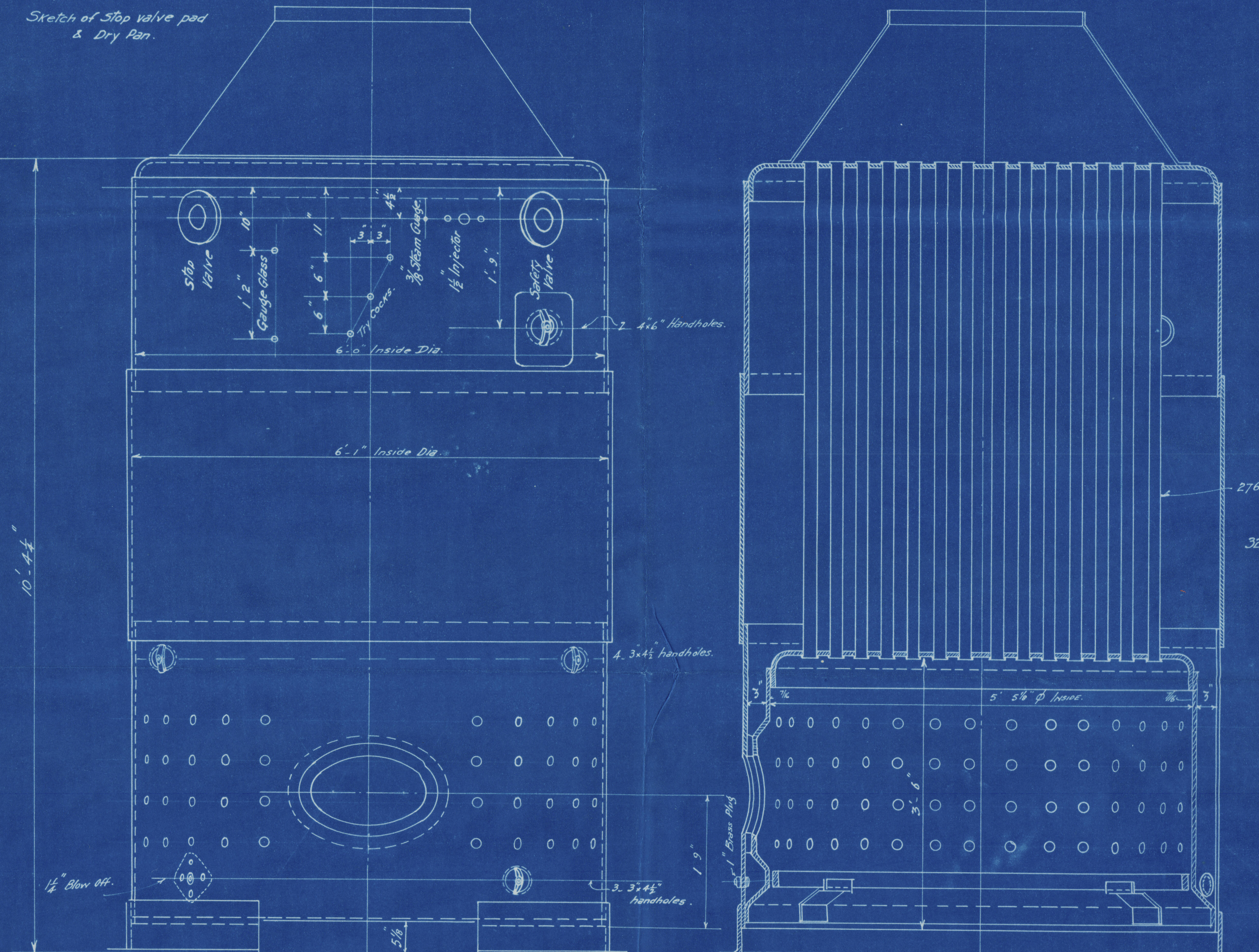
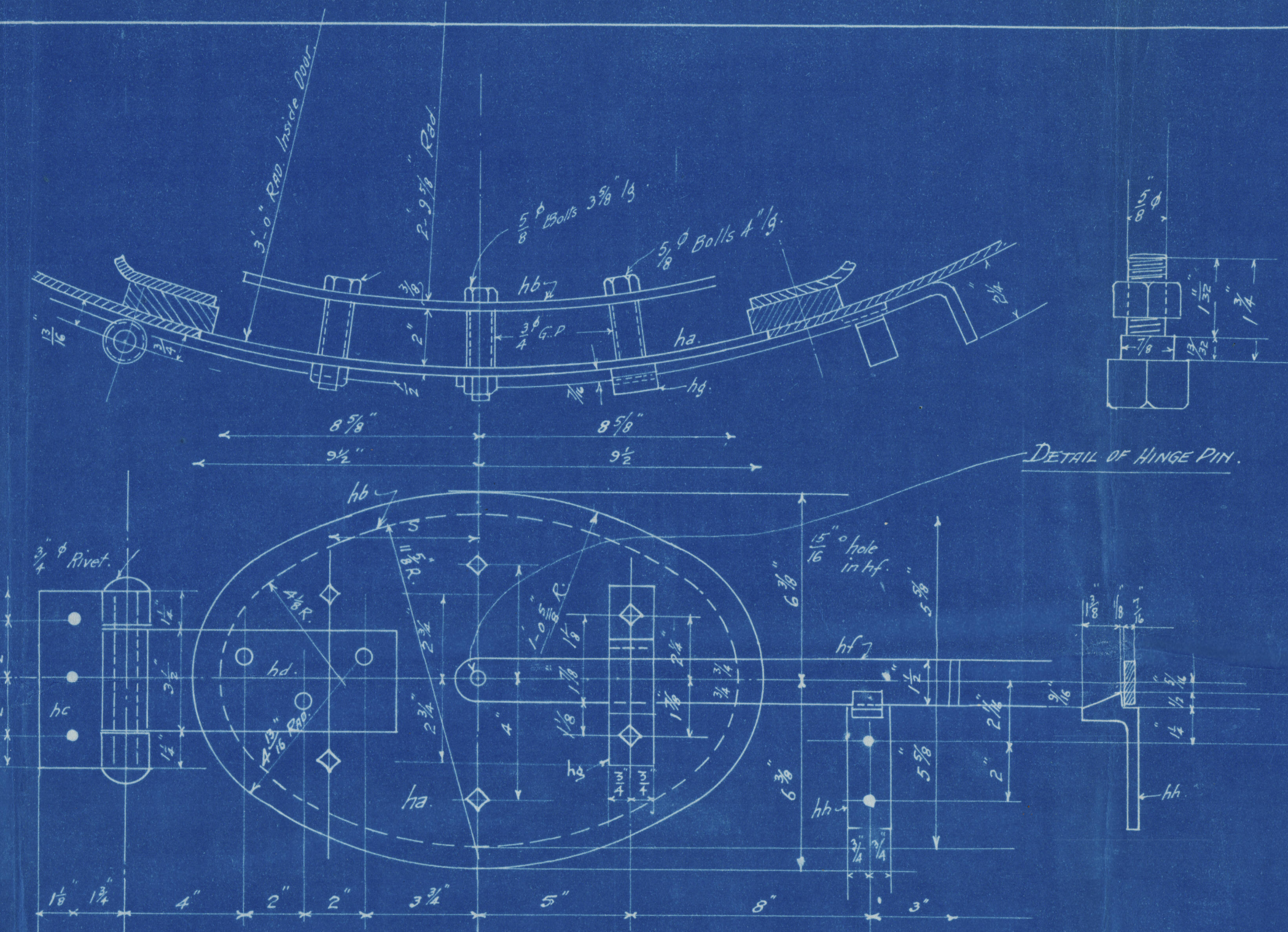
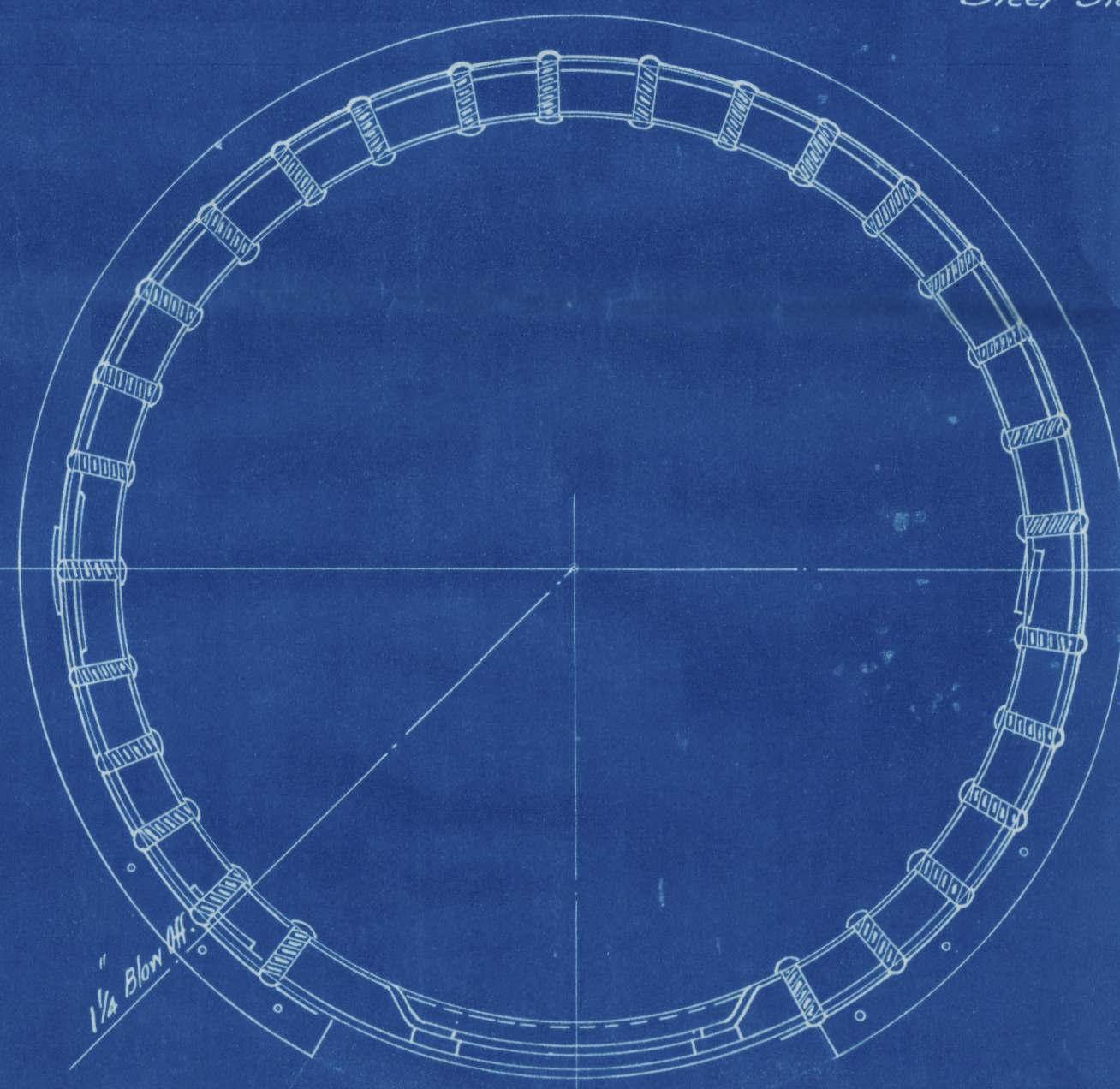


Sketch of stop valve and dry pan.



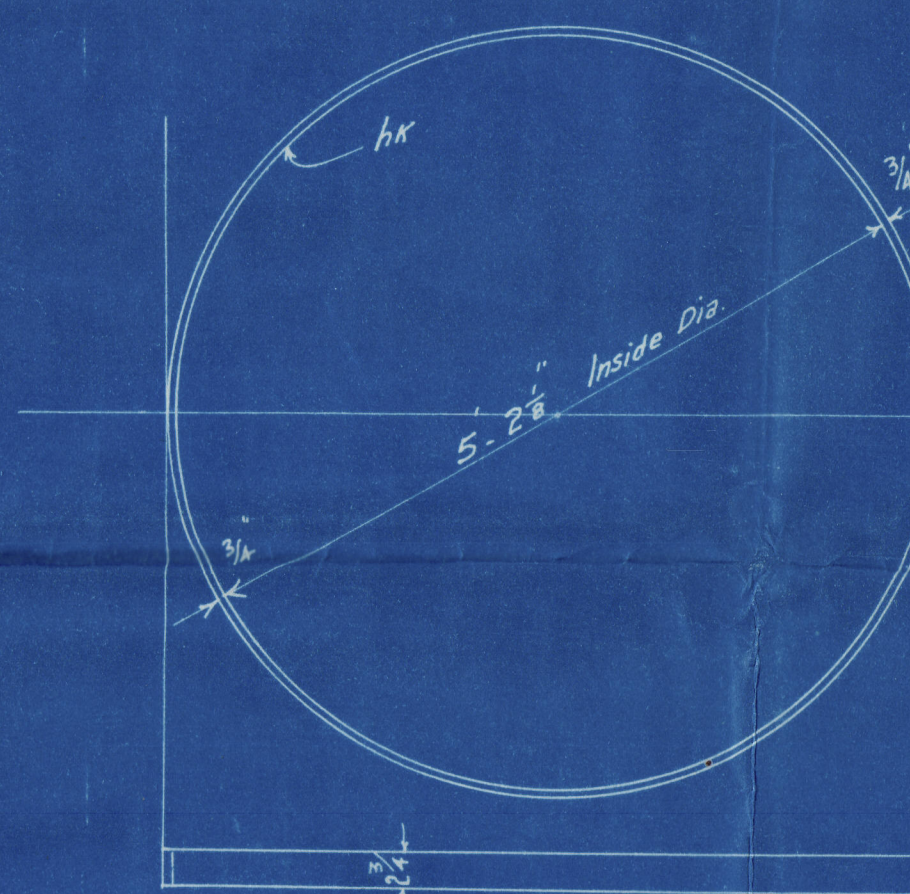
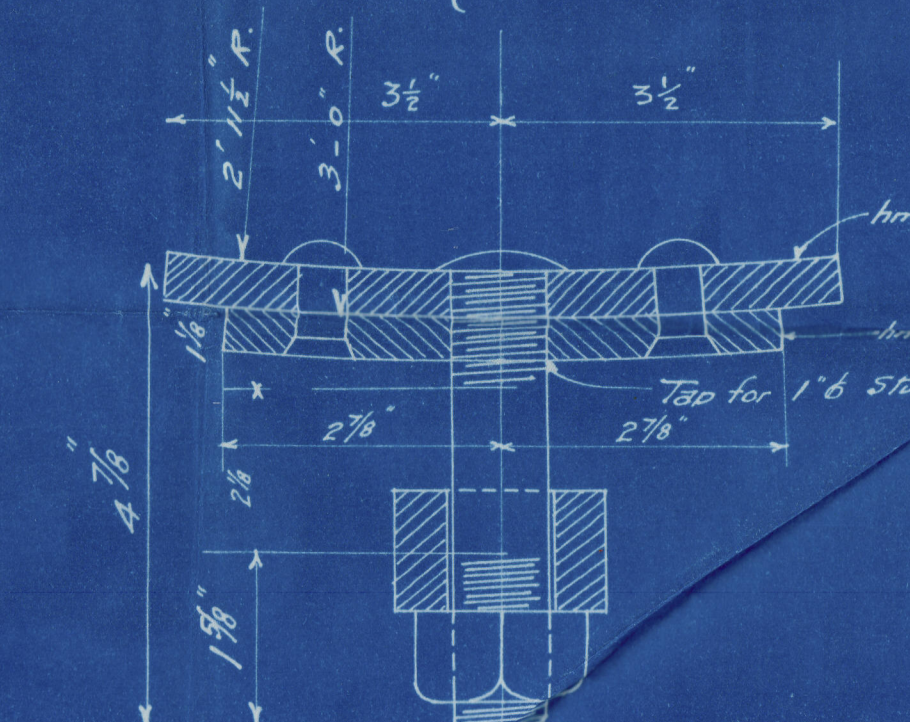
Steel Stays 1/2", 12 threads per inch. Rivetted over.



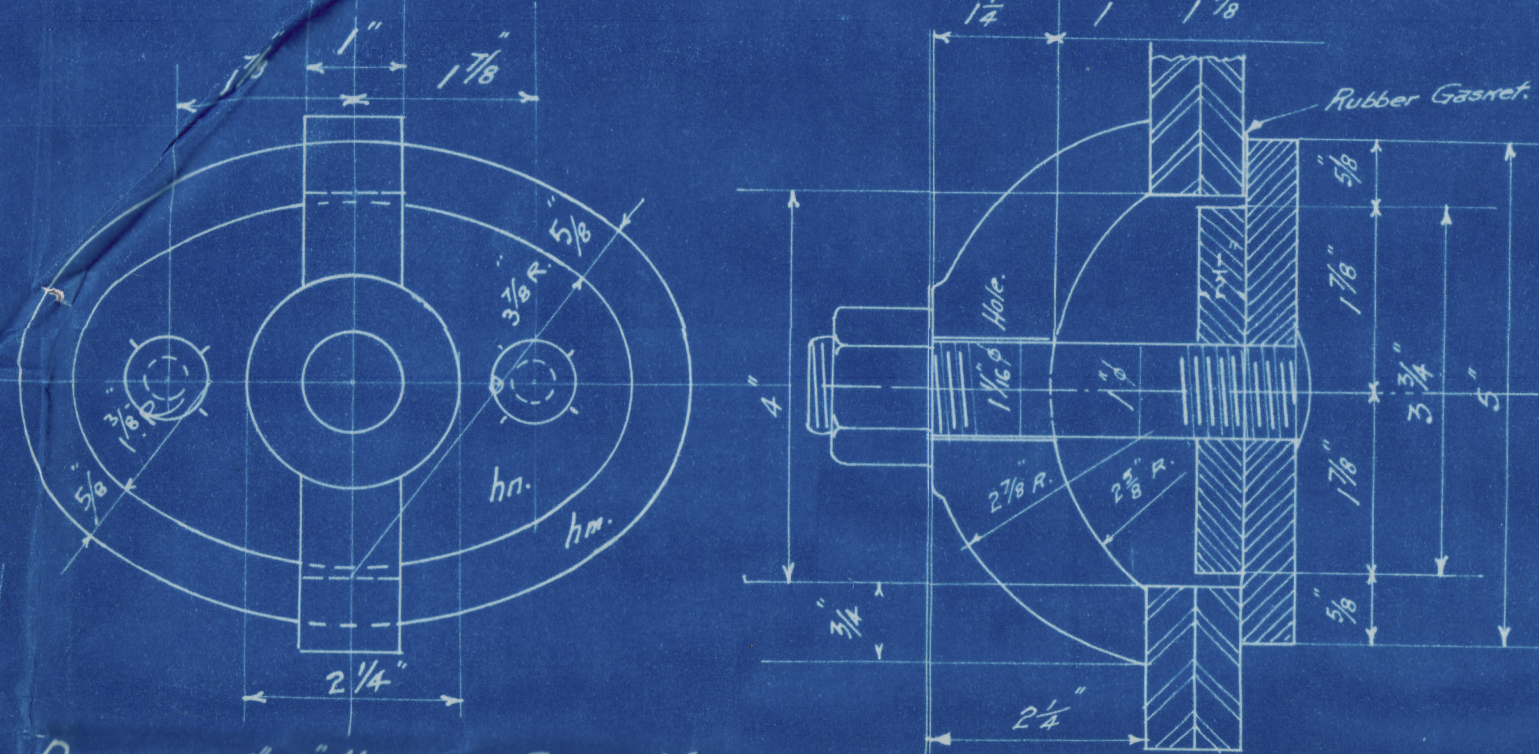
DETAIL OF DOOR & DOOR SHIELD DEVELOPED  
FIRE DOOR - 6 REQ. COMPLETE.

276 - 2" O.D. Tubes. 6' 6 1/2" 11 Gauge A.S.M.E. Std.  
Expanded & banded over at both ends.

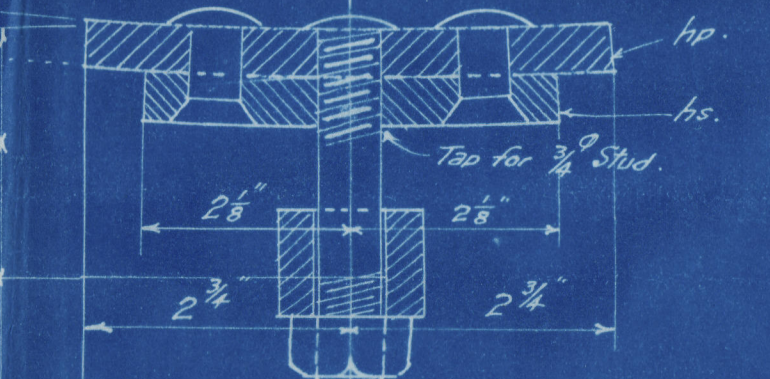
32 - 1 1/4" φ Stay Tubes. (Upsot & Threaded, See Detail.)



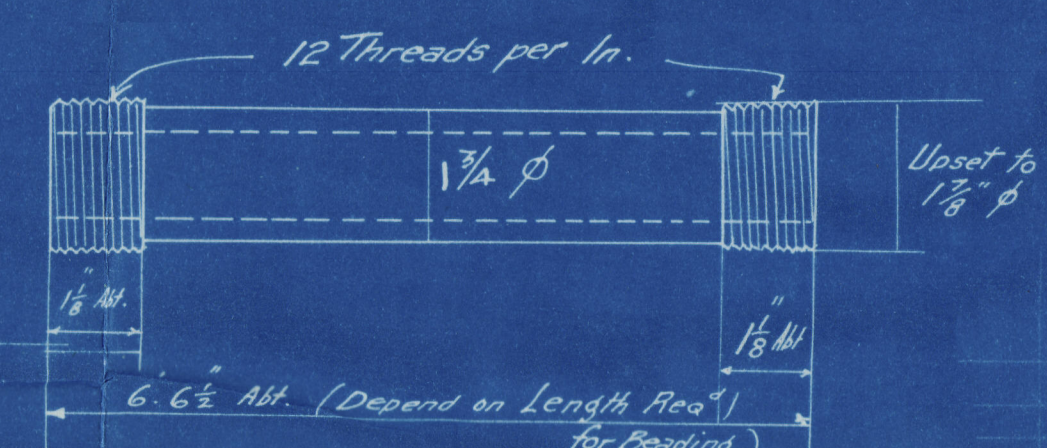
FIRE GRATE RING - 6 REQ.



DETAIL OF 4x6" HANDHOLE COVER & YOKE.  
12 REQ. COMPLETE.



DETAIL OF 3x4 1/2" HANDHOLE COVER & YOKE.  
42 - Req. Complete.



Stay Tubes 192 Req.

Working Pressure 125 #/sq. in.

DOMINION BRIDGE CO. LTD.  
SENT  
Sept. 27, 1918.  
WINNIPEG DRAFTING OFFICE.

EXCEPTIONS. Noted.

COPY  
OF APPROVED AMENDED PLAN  
OCTOBER 2nd 1918.

Revised 20th Sept. 1918.  
Revised 31st Aug. 1918.

DOMINION BRIDGE CO. LTD. WINNIPEG	
PROPRIETOR	Wm. Lyall Shipbuilding Co. Ltd.
DESCRIPTION	72x120 Donkey Boilers.
PURCHASER	Wm. Lyall Shipbuilding Co. Ltd.
DETAIL	Fire door, grate ring & handholes Green.
MADE BY	S.L.
CHECKED	M.H.
DATE	May 30, 1918.
CONTRACT	W-1312.
DRAWING	2.

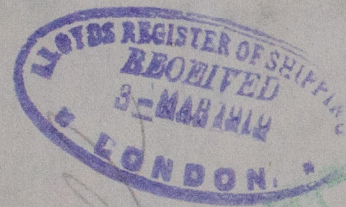
Wm LYALL SHIPBUILDING CO LTD					CONTRACT W-1312				
6 - 72" x 120" DONKEY BOILERS.					Shop Bill (2)				
MARK.	Nº	SIZE.	REMARKS	LOCATION	FINISHED LENGTH		Ordered		Weight.
					Ft.	Ins.	Length	Item	
Ft.	Ins.	Ft.	Ins.	Item					
PLATES.									
ha	6	12 3/4 x 1/2	BENT.	Door	1	7			
hb	6	11 1/4 x 3/8	"	Door Shield	1	5 1/4			
hc	6	6 x 3/8	"	Hinge	7				
hd	6	3 1/2 x 3/8	"		1	2			
he	6	1 1/2 x 3/8	"	Catch	1	6 3/4			
hf	6	1 1/2 x 3/8	"			7 1/2			
hg	6	1 1/2 x 3/8	"			6			
hh	6	2 3/4 x 3/4	FORGED		17	0			
hi	12	5 x 1/2	WELDED RING		7				
hj	12	3 3/4 x 1/2	BENT			5 1/2			
hk	42	4 x 1/2	"	6x4 Handhole Cover		5 1/2			
hl	42	2 3/4 x 1/2	"	"		4 1/2			
Wm LYALL SHIPBUILDING CO. 6 72" x 120" DONKEY BOILER. CONT. W-1312. (2)									
MACHINE SHOP.									
12	Bolts. 3/8 Ø				4				
24	" 3/8				3 3/8				
36	G.P. Sds. 3/4				2				
6	Door Hinge.	3/8 Ø Rivet.			7				
6	Catch	7/8 Ø Bolt.			1 3/4				
12	Yoke for 6" x 4" Handhole Forged.								
42	" 4 1/2 x 3	"							
12	1" Stud Nut. for 6" x 4" Handhole				5 1/2				
42	3/8 Ø " 4 1/2 x 3				4 1/2				
6	Rubber Gasket for 6" x 4" Handhole								
42	" " " 4 1/2 x 3								
1656	2" O.D. Tubes #11 Gauge				6	6 1/2	ORDERED		
1326	1 3/4 " 1/4 THK.	Abt.			6	7 1/2	"		
6	1" Ø Brass Plug.						"		
1 1/4" Ø Screwed Stays 12 Threads over Inch 285 Lp. Ft. Ordered.									

Wm. LYALL SHIPBUILDING CO. 72x120 DONKEY BOILER. CONT. W-1312. (2)							
MACHINE SHOP.							
12	Bolts	3/8 φ			4		
24	"	3/8			3 3/8		
36	G.P. Sds	3/4			2		
6	Door Hinge	3/8 φ Rivet			7		
6	Catch	3/8 φ Bolt			1 3/4		

12	Yoke for 6x4 Handhole Forged						
42	" 4 1/2 x 3						
12	1" Std. Nut for 6x4 Handhole				5 1/2		
42	" 4 1/2 x 3				4 1/2		
6	Rubber Gasket for 6x4 Handhole						
42	" 4 1/2 x 3						
1656	2" O.D. Tubes 11 Gauge	6	6 1/2	ORDERED			
192	1 1/4" " 1/4 T.M.S. Abt.	6	7 1/2	"			
6	1" φ Brass Plug			"			
1 1/4" Screwed Stays 12 Threads per inch 245 Lin. Ft.					ORDERED.		



Wm Lyall. M.B. 1866  
Plan of Donkey Boilers  
Ant Schooner. Cap Nord  
Yard No 4



W1098-0259



© 2020



Lloyd's Register  
Foundation