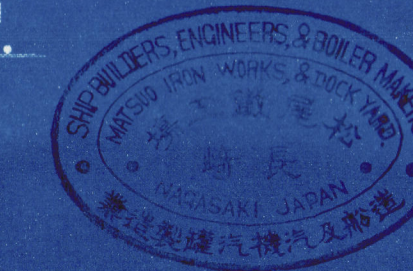


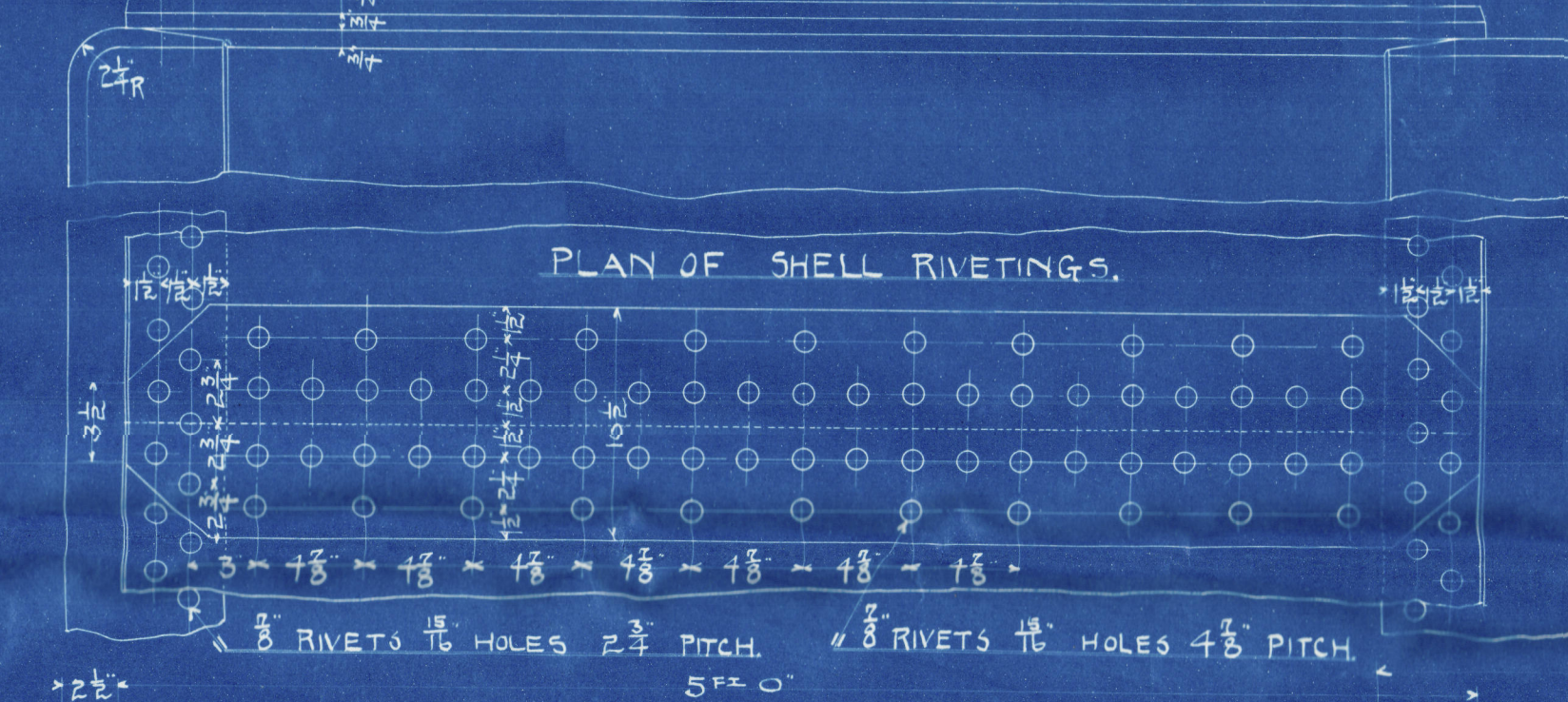
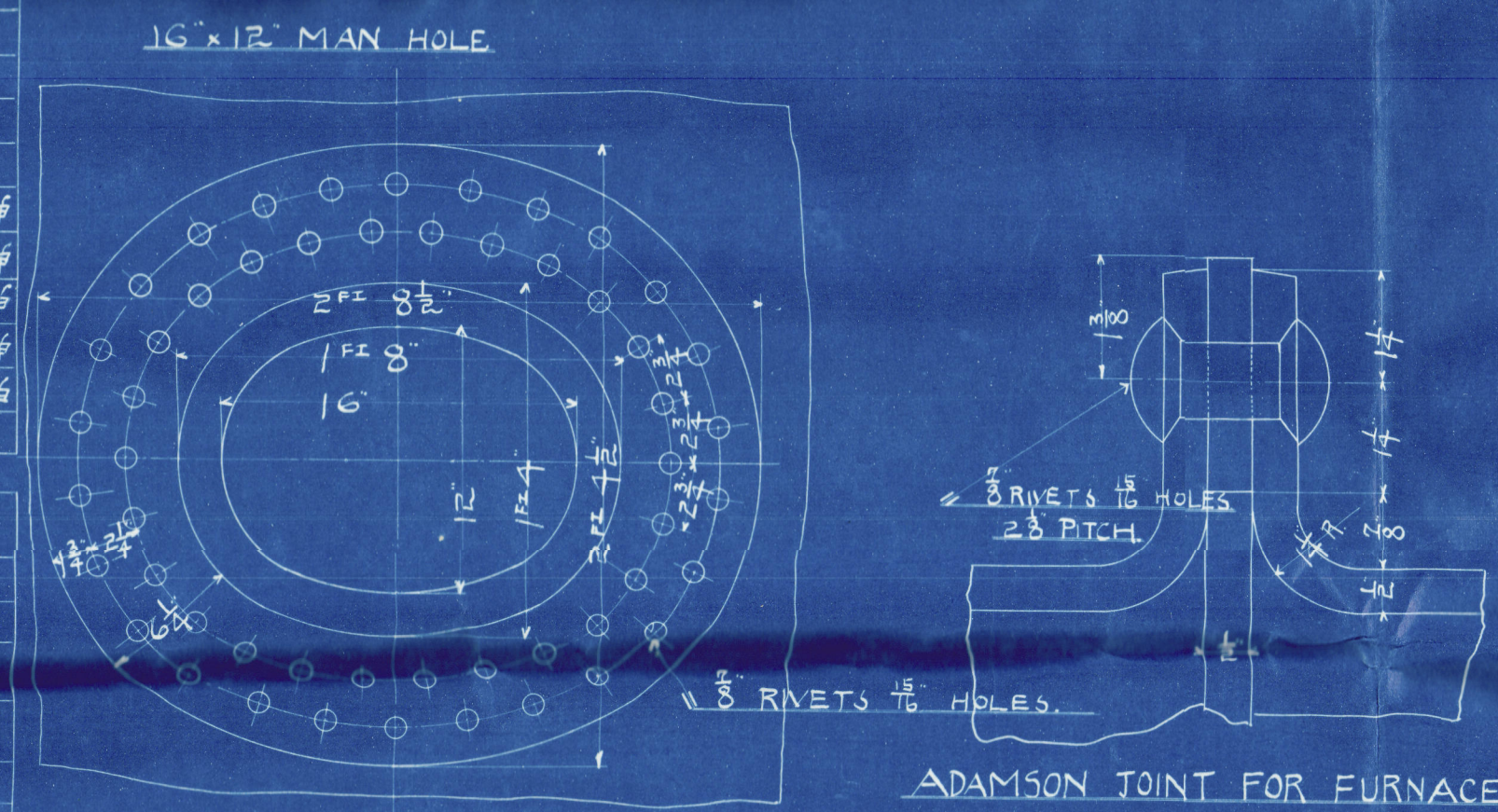
# BUILDER'S No 57 STEEL DONKEY BOILER.

WORKING PRESSURE 110 LBS/SQ. IN.  
SCALE 1 1/2 INCH TO A FOOT.

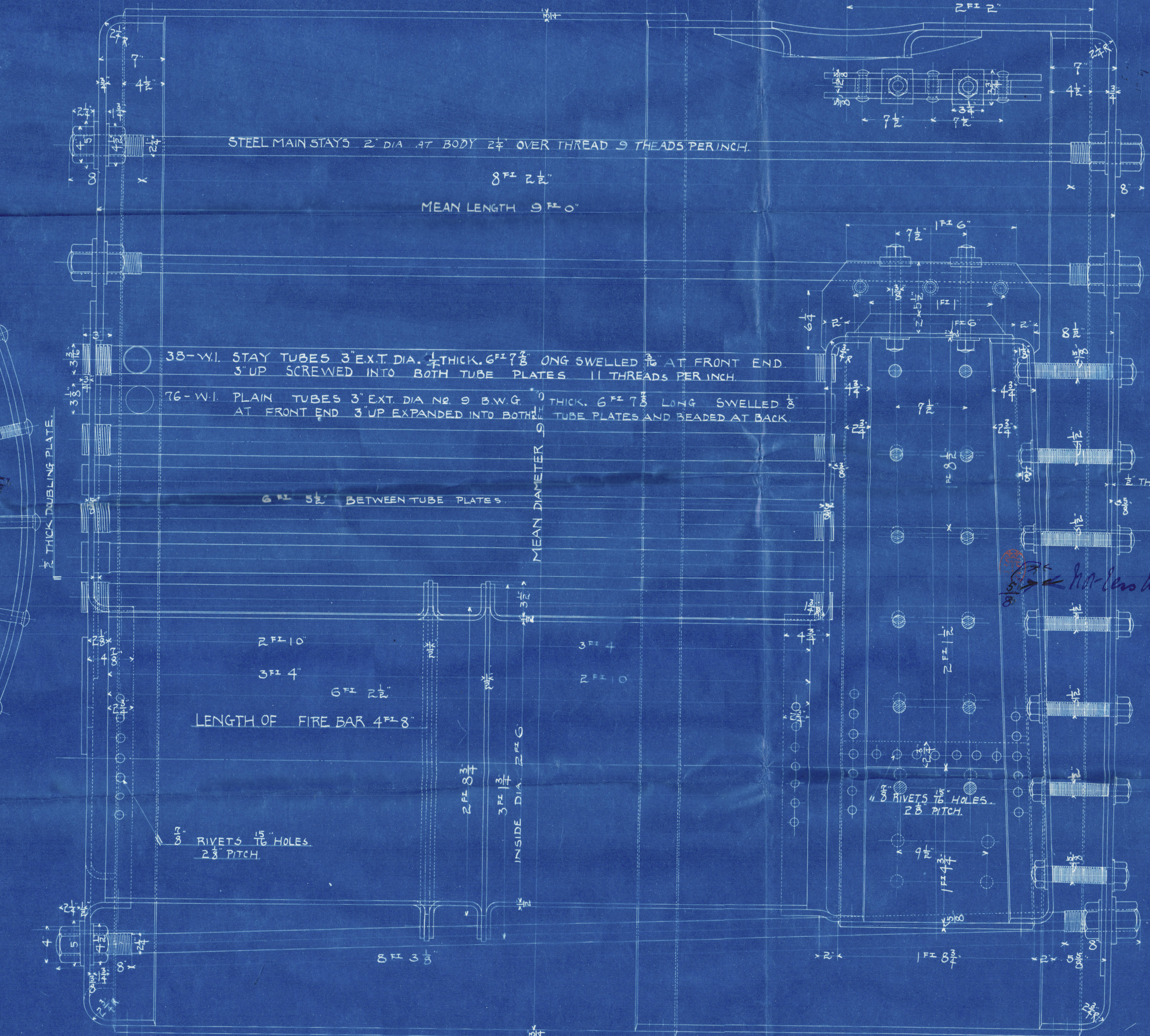
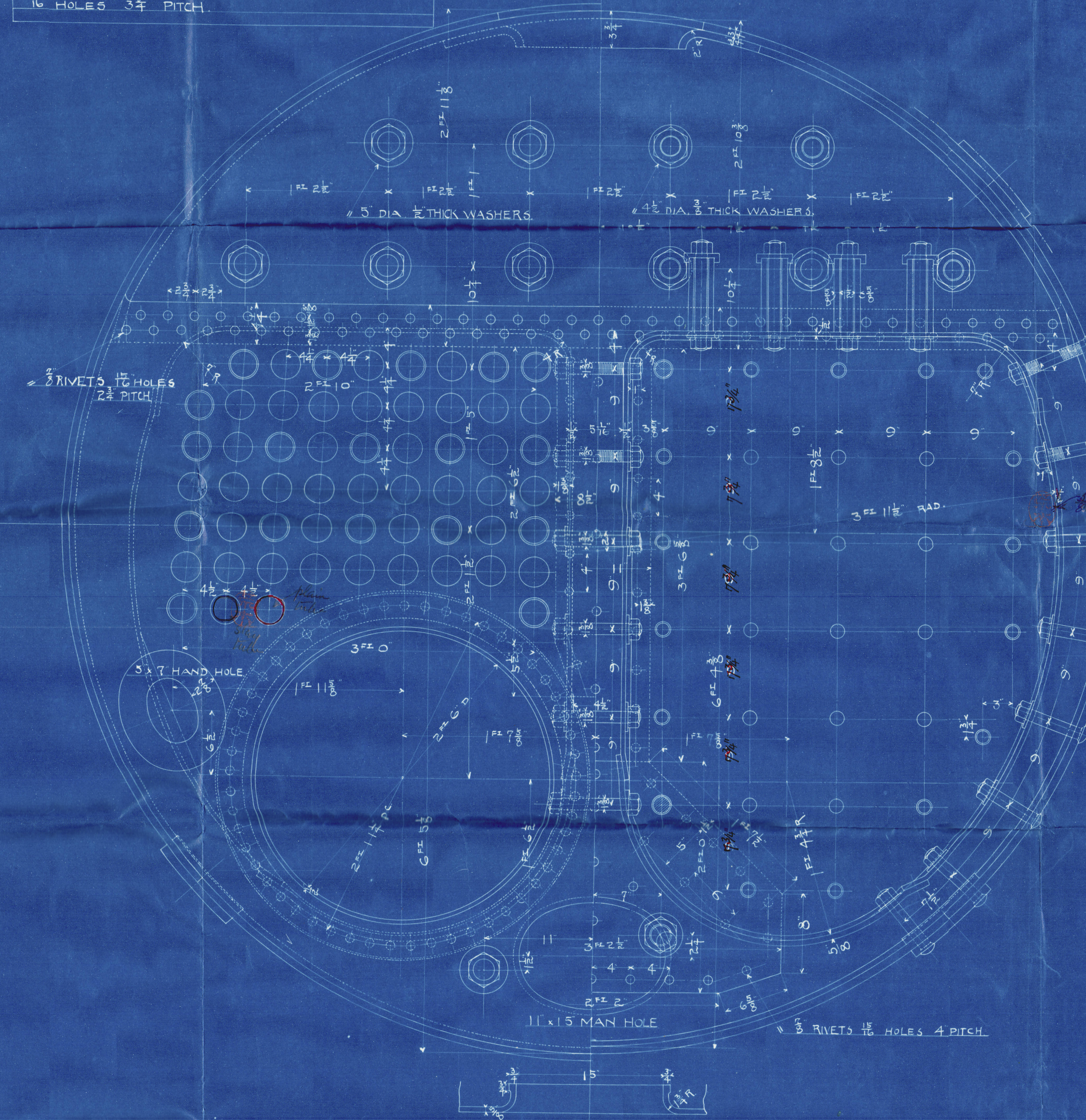
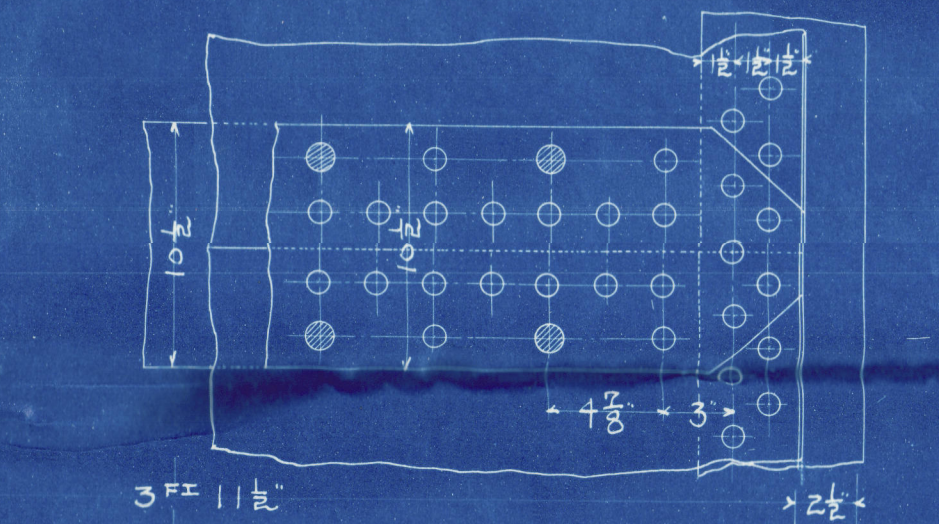


PRINCIPAL DIMENSIONS.	
MEAN DIA. OF BOILER	9' 0"
MEAN LENGTH OF BOILER	2' 6"
INSIDE DIA. OF FURNACE	2' 6"
LENGTH OF FIRE GRATE	4' 8"
HEATING SURFACE	
FURNACES	47.223 sq. ft.
TUBES	578.249 sq. ft.
COMB. CHAMBERS	76.730 sq. ft.
TOTAL	702.202 sq. ft.
GRATE AREA	23.33 sq. ft.
RATIO OF HS/GA.	30.10

LONGITUDINAL SEAMS	
DOUBLE RIVETED DOUBLE BUTT STRAP JOINT	
8 RIVETS 1 1/2" HOLES 4 1/2" PITCH	
THICKNESS OF SHELL PLATE	3/4"
CIRCUMFERENTIAL SEAMS	
DOUBLE RIVETED LAP JOINT	
10 RIVETS 1 1/2" HOLES 3 1/2" PITCH	



SCREW STAYS.	
4 - 1 1/2" DIA. 11 THREADS PER INCH.	
30 - 1 1/2" DIA.	
28 - 1 1/2" DIA.	
44 - 1 1/2" DIA.	

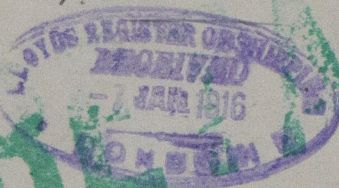


*Handwritten signature and date: 7/1/16*



Sonkey Boiler for No. 57  
Matsuo Iron Works Dockyard

Nagasaki  
S.S. "Toyo Maru No. 2"  
Report No. 1143



RETAI



© 2020

Lloyd's Register  
Foundation

W1096-0088