

MOULDED DIMENSIONS 40' 0" BP 53' 6" 30' 6" 38' 6" to SHELTER DECK

MILLARS SYSTEM OF FRAMING (PATENTED)

TO CLASS 100 AT LLOYDS.

S. S. "STAUR"

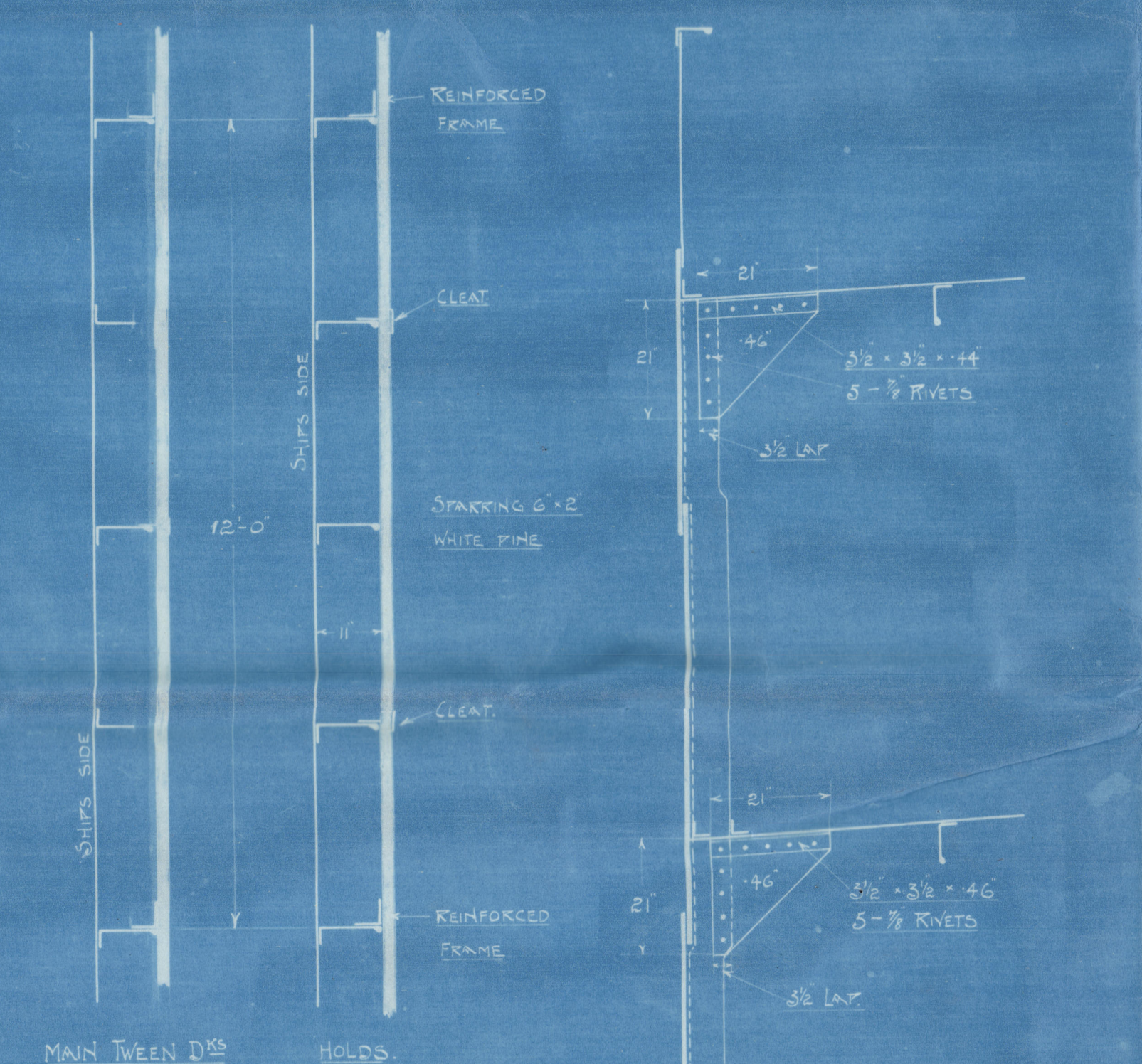
MIDSHIP SECTION

SCALE 1/2" = 1 FOOT

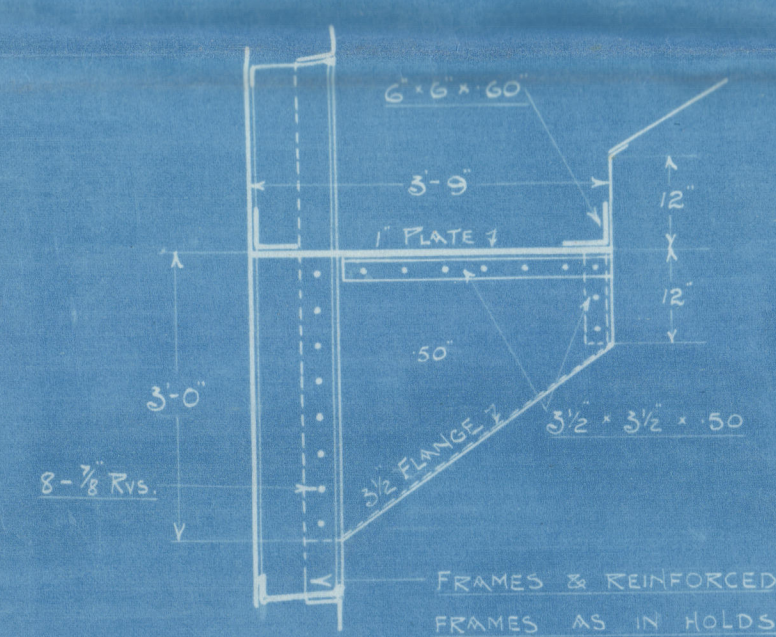
THE FOLLOWING SCANTLINGS HAVE BEEN INCREASED

OVER REQUIREMENTS TO SUIT OWNERS

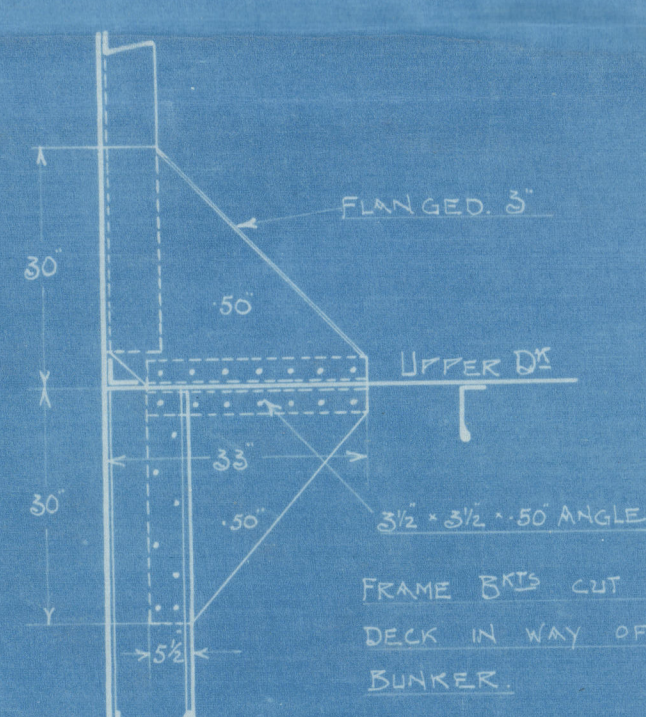
FLOORS & WT DIVISIONS FOR 8 SPACES UNDER BOILERS	INCREASED	80
INTERCOSTALS FOR 8 SPACES UNDER BOILERS		80
TANK TOP PLATING UNDER BOILERS		80
SHELTER DECK PLATING BETWEEN BOILER CASING & SALOON HOUSE		80
TANK REVERSE FRAMES IN BOILER SPACE INCREASED TO 4" x 4" x 5/8"		
FORE & AFTER SUPPORTS ON FLOORS IN BOILER SPACE INCREASED TO 8" x 8" x 5/8"		



PLAN SHOWING ARRANGEMENT OF FRAMES AT 36 SPACING

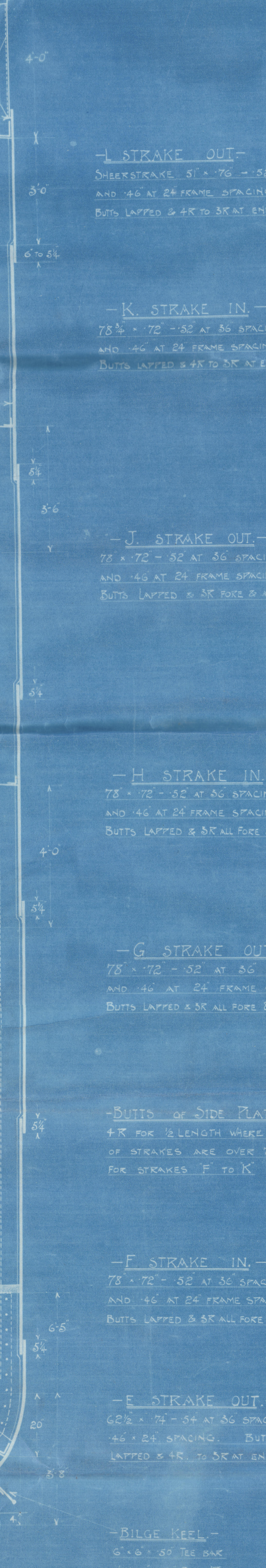
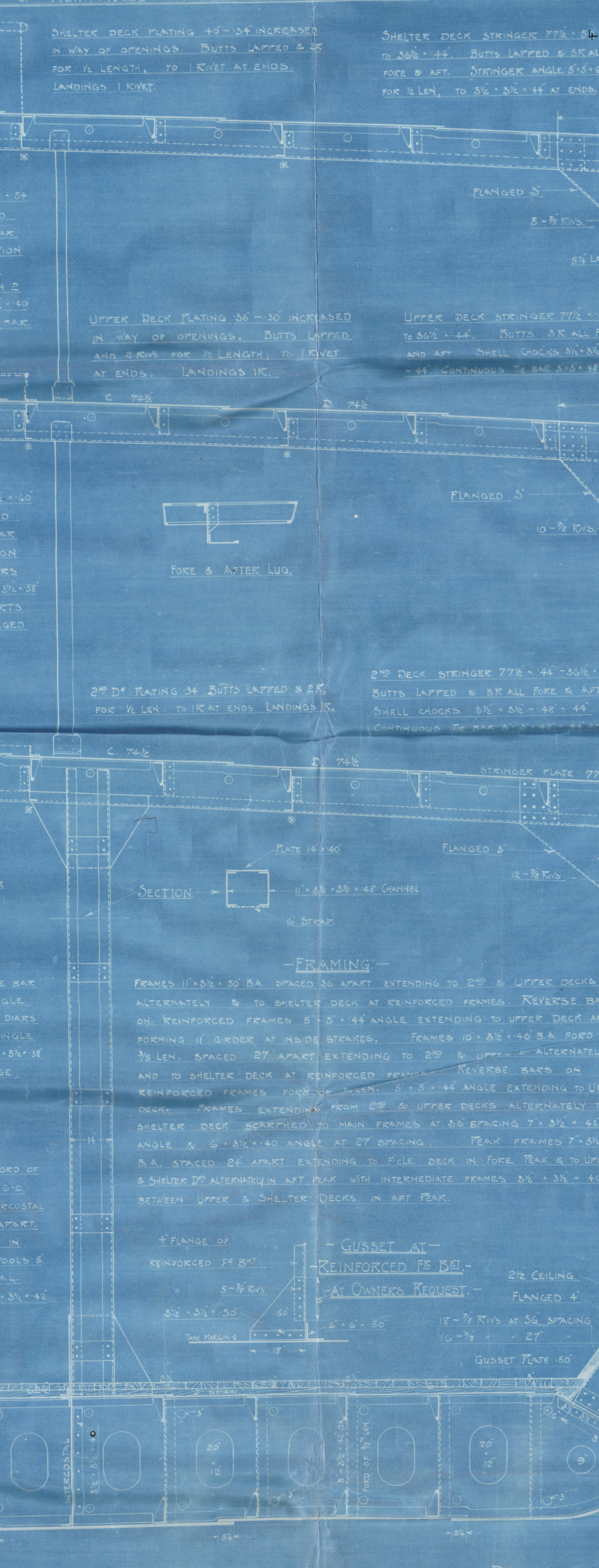
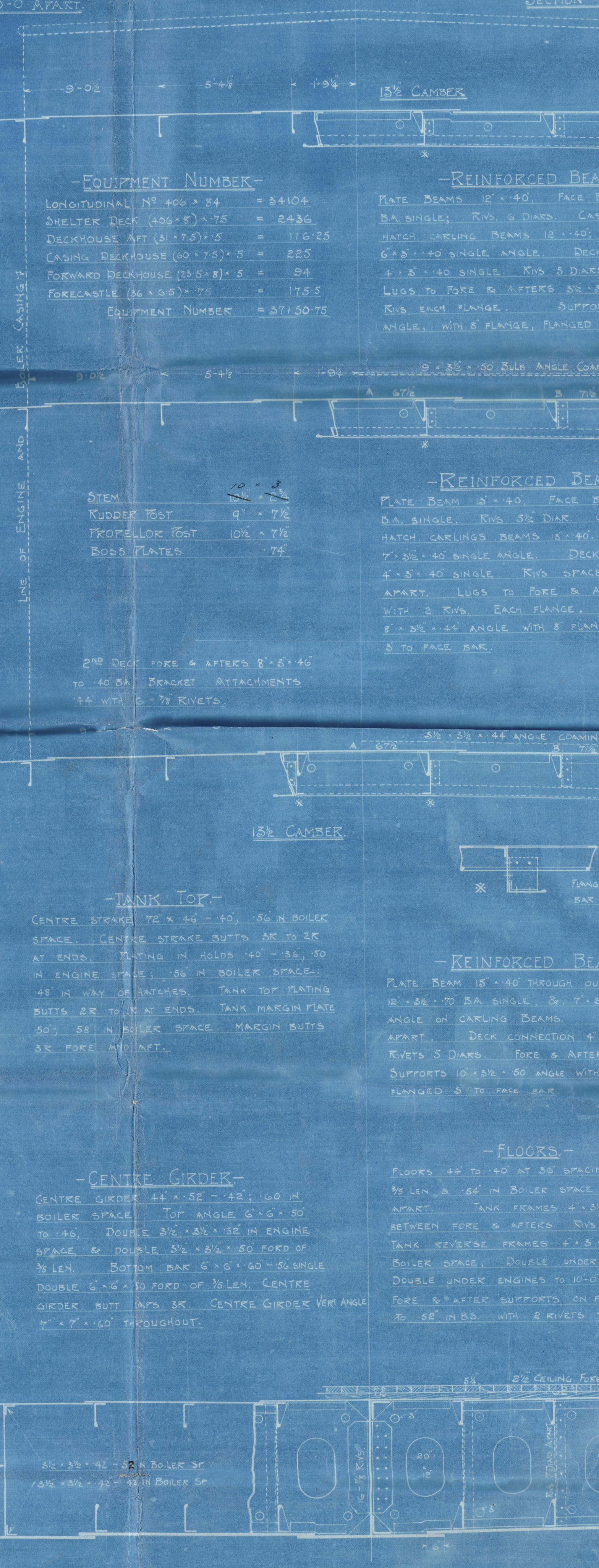
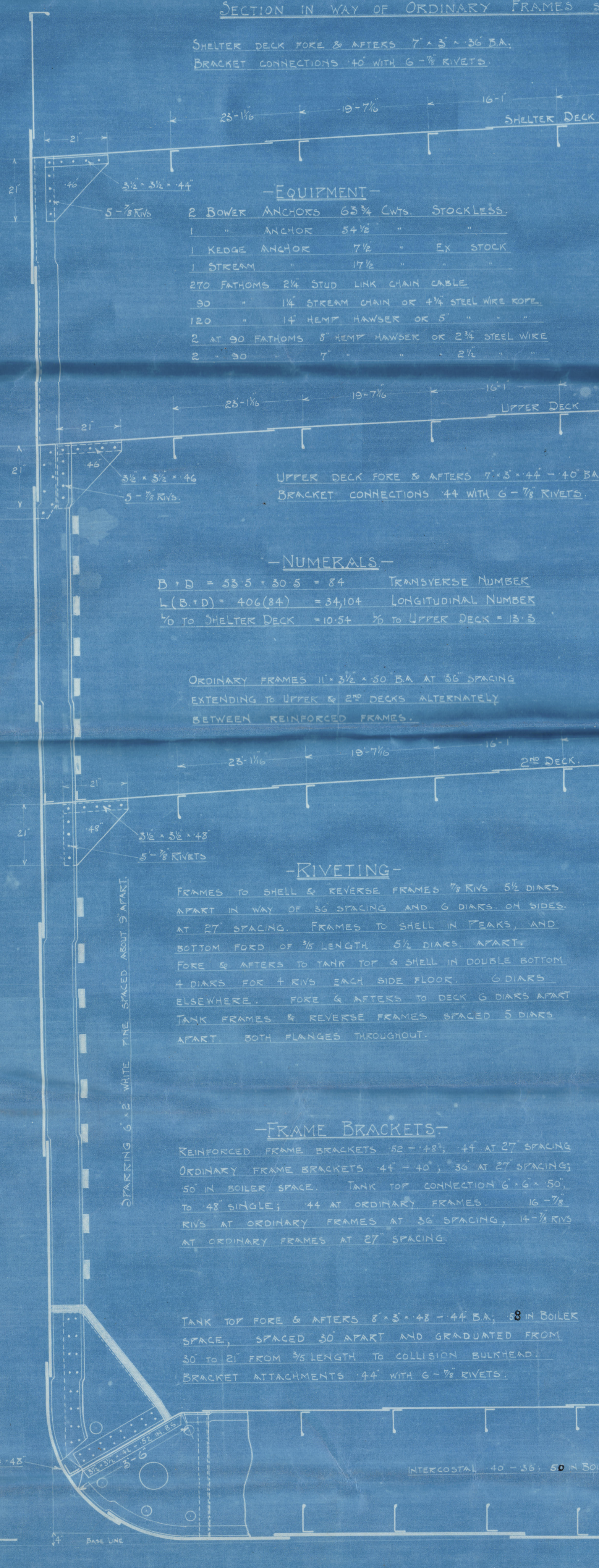
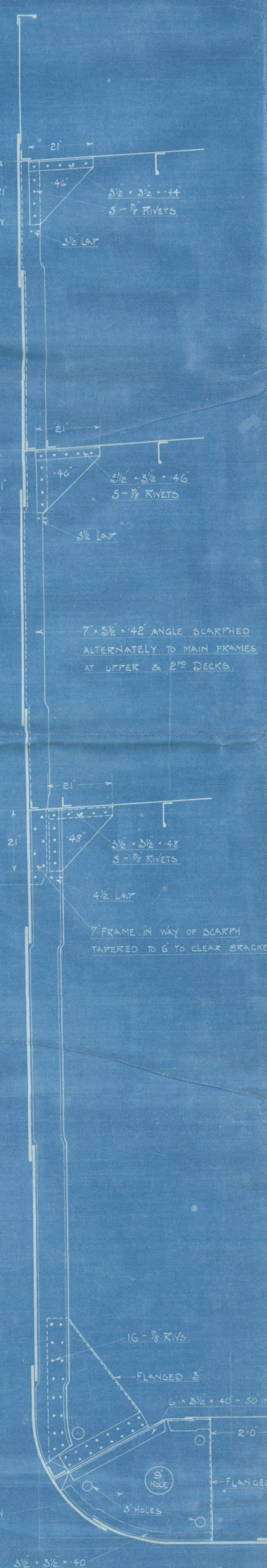


BRACKETS AT STRINGER IN BOILER SPACE



BRACKET IN WAY OF OIL FUEL BUNKER

44 - 40" AT 36 SPACING 80 IN 85 36 FORD OF 1/2 LEN



SECTION IN WAY OF ORDINARY FRAMES SPACED 3'-0" APART

SHELTER DECK FORE & AFTERS 7'-5" x 3/8" BA. BRACKET CONNECTIONS 44 WITH 6-7/8 RIVETS.

EQUIPMENT

2 BOWER ANCHORS 65% CWT. STOCKLESS.
1 ANCHOR 84 1/2"
1 KEDGE ANCHOR 7 1/2" x 6" EX STOCK
1 STEAM 17 1/2"
2 TO FATHOMS 2 1/4" STUD LINK CHAIN CABLE
30 - 1 1/2" STEAM CHAIN OR 4 1/4" STEEL WIRE ROPE
120 - 1 1/4" HEMP HAWSER OR 5" x 12"
2 AT 90 FATHOMS 8" HEMP HAWSER OR 2 1/2" STEEL WIRE
2 - 30 - 7" x 12" x 2 1/2"

NUMERALS

B & D = 33.5 x 30.5 = 84 TRANSVERSE NUMBER
L (B & D) = 406 (84) = 34104 LONGITUDINAL NUMBER
50 TO SHELTER DECK = 1054 3/8 TO UPPER DECK = 18.5

RIVETING

FRAMES TO SHELL & REVERSE FRAMES 7/8" KVS 5/8" DIAM. APART IN WAY OF 36 SPACING AND 6 DIAM. ON SIDES AT 27 SPACING. FRAMES TO SHELL IN PEAKS AND BOTTOM FORD OF 1/2 LENGTH 5/8" DIAM. APART. FORE & AFTERS TO TANK TOP & SHELL IN DOUBLE BOTTOM 4 DIAM. FOR 4 KVS EACH SIDE FLOOR. 6 DIAM. ELSEWHERE. FORE & AFTERS TO DECK 6 DIAM. APART. TANK FRAMES & REVERSE FRAMES SPACED 5 DIAM. APART. BOTH PLUNGES THROUGHOUT.

FRAME BRACKETS

REINFORCED FRAME BRACKETS 42 - 48" x 44" AT 27 SPACING. ORDINARY FRAME BRACKETS 44 - 40" x 36" AT 27 SPACING. 50 IN BOILER SPACE. TANK TOP CONNECTION 6" x 6" x 50" TO 48" SINGLE; 44 AT ORDINARY FRAMES. 16-7/8" KVS AT ORDINARY FRAMES AT 36 SPACING. 14-7/8" KVS AT ORDINARY FRAMES AT 27 SPACING.

TANK TOP FORE & AFTERS 8'-5" x 48" - 44" BA. 38 IN BOILER SPACE. SPACED 30" APART AND GRADUATED FROM 30 TO 21" FROM 3/8 LENGTH TO COLLISION BUD. BRACKET ATTACHMENTS 44 WITH 6-7/8 RIVETS.

EQUIPMENT NUMBER

LONGITUDINAL NO 406 x 84 = 34104
SHELTER DECK (406 x 84) = 34104
DECKHOUSE AFT (31 x 75) = 2325
CASING DECKHOUSE (50 x 75) = 3750
FORWARD DECKHOUSE (23 x 8) = 184
FORECASTLE (36 x 35) = 1260
EQUIPMENT NUMBER = 3713075

REINFORCED BEAM

PLATE BEAM 12' x 40" FACE BAR 10' x 3/8" x 5/8" BA. SINGLE KVS 5 DIAM. CASING AND HATCH CASING BEAMS 12' x 40" FACE BAR 6' x 10" SINGLE ANGLE DECK CONNECTION 4' x 5' x 40" SINGLE KVS 5 DIAM. APART. LUGS TO FORE & AFTERS 3/8" x 3/8" x 32" WITH 2 KVS EACH FLANGE. SUPPORTS 8' x 8" x 40" ANGLE WITH 8 FLANGES, FLANGED 5 TO FACE BAR.

REINFORCED BEAM

PLATE BEAM 12' x 40" FACE BAR 10' x 3/8" x 5/8" BA. SINGLE KVS 5 DIAM. CASING AND HATCH CASING BEAMS 12' x 40" FACE BAR 6' x 10" SINGLE ANGLE DECK CONNECTION 4' x 5' x 40" SINGLE KVS 5 DIAM. APART. LUGS TO FORE & AFTERS 3/8" x 3/8" x 32" WITH 2 KVS EACH FLANGE. SUPPORTS 8' x 8" x 40" ANGLE WITH 8 FLANGES, FLANGED 5 TO FACE BAR.

TANK TOP

CENTRE STRAKE 72' x 48" - 40" 1/2" IN BOILER SPACE. CENTRE STRAKE BUTTS 38" TO 32" AT ENDS. PLATING IN HOLDS 40" - 36" 30 IN ENGINE SPACE. 36 IN BOILER SPACE. 48 IN WAY OF HATCHES. TANK TOP PLATING BUTTS 28" TO 16" AT ENDS. TANK MARKING PLATE 50" x 58" IN BOILER SPACE. MARGIN BUTTS 38" FOR AFT AND AFT.

CENTRE GIRDER

CENTRE GIRDER 44' x 52" - 42" 1/2" 100 IN BOILER SPACE. TOP ANGLE 6' x 6" x 50" TO 40" DOUBLE 3/8" x 3/8" x 32" IN ENGINE SPACE & DOUBLE 3/8" x 3/8" x 50" FORD OF 3/8 LEN. BOTTOM BAR 6' x 6" x 60" 50 SINGLE DOUBLE 6' x 6" x 30 FORD OF 1/2 LEN. CENTRE GIRDER BUTT LUGS 38". CENTRE GIRDER VER ANGL 7" x 7" x 60" THROUGHOUT.

FLOORS

FLOORS 44" TO 40" AT 36 SPACING. 36 FORD OF 3/8 LEN & 34" IN BOILER SPACE. SPACED 6" 0" APART. TANK FRAMES 4' x 2 1/2" x 40" INTERCOSTAL BETWEEN FORE & AFTERS. KVS 5 DIAM. APART. TANK REVERSE FRAMES 4' x 5' x 42" - 38" IN BOILER SPACE. DOUBLE UNDER BOILER STOWS & DOUBLE UNDER ENGINES TO 10' 0" INTERCOSTAL. FORE & AFTER SUPPORTS ON FLOORS 8 1/2" x 3 1/2" x 42" TO 32" IN 85 WITH 2 RIVETS TO F & A.

KEEL PLATE

48" x 36" FOR 35 LEN TO 70 AT ENDS. BUTTS 4 R - 38" OUTSIDE 1/2 LEN WHERE 76 AND UNDER.

A STRAKE IN

78' x 60" - 40" BUTTS LAPPED & 38" THROUGHOUT.

B STRAKE OUT

82' x 60" - 40" BUTTS LAPPED & 38" THROUGHOUT.

C STRAKE IN

82' x 60" - 40" BUTTS LAPPED & 38" THROUGHOUT.

D STRAKE OUT & IN

61' x 72" - 32" AT 36 SPACING 76' x 48" - 32" AT 27 SPACING. BUTTS LAPPED & 38" TO 36 AT ENDS.

L STRAKE OUT

SHEER STRAKE 51' x 76" - 38" AND 40" AT 27 FRAME SPACING. BUTTS LAPPED & 38" TO 36 AT ENDS.

K STRAKE IN

78' x 72" - 32" AT 36 SPACING AND 40" AT 27 FRAME SPACING. BUTTS LAPPED & 38" TO 36 AT ENDS.

J STRAKE OUT

72' x 72" - 32" AT 36 SPACING AND 40" AT 27 FRAME SPACING. BUTTS LAPPED & 38" FOR AFT.

H STRAKE IN

78' x 72" - 32" AT 36 SPACING AND 40" AT 27 FRAME SPACING. BUTTS LAPPED & 38" FOR AFT.

G STRAKE OUT

78' x 72" - 32" AT 36 SPACING AND 40" AT 27 FRAME SPACING. BUTTS LAPPED & 38" FOR AFT.

BUTTS OF SIDE PLATING

4 R FOR 1/2 LENGTH WHERE BREADTH OF STRAKES ARE OVER 72" FOR STRAKES F TO K.

F STRAKE IN

78' x 72" - 32" AT 36 SPACING AND 40" AT 27 FRAME SPACING. BUTTS LAPPED & 38" FOR AFT.

E STRAKE OUT

62' x 76" - 34" AT 36 SPACING 46' x 50" - 32" AT 27 SPACING. BUTTS LAPPED & 38" TO 36 AT ENDS.

BULGE KEEL

6' x 6" x 40" TEE BAR WITH 10' x 40" BULGE PLATE.

RANDFONTEIN

The Greenock Ste^{EX} 2^d Co L^d

No 400

S. S. "Staur"

Midship Section
as built

Grk Rept No 17726

RETAIN

RETAIN

© 2020

Lloyd's Register
Foundation

Wt 94-0137