

NOTE—ALL WORK WILL BE DONE IN ACCORDANCE WITH THIS DRAWING.
NO CHANGES ARE TO BE MADE WITHOUT AUTHORITY FROM THE
DRAWING OFFICE

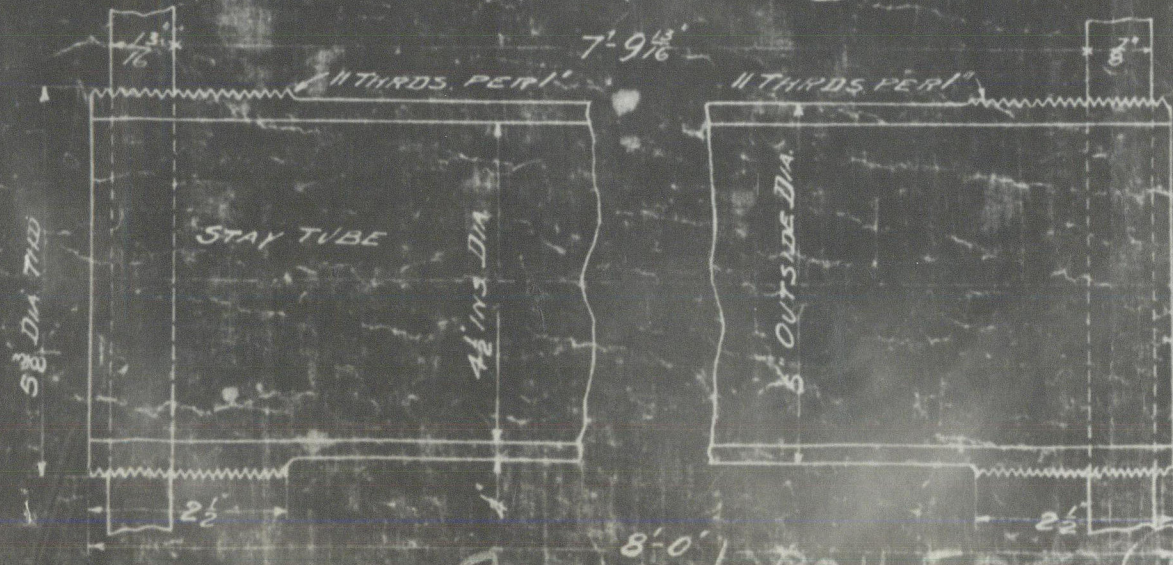
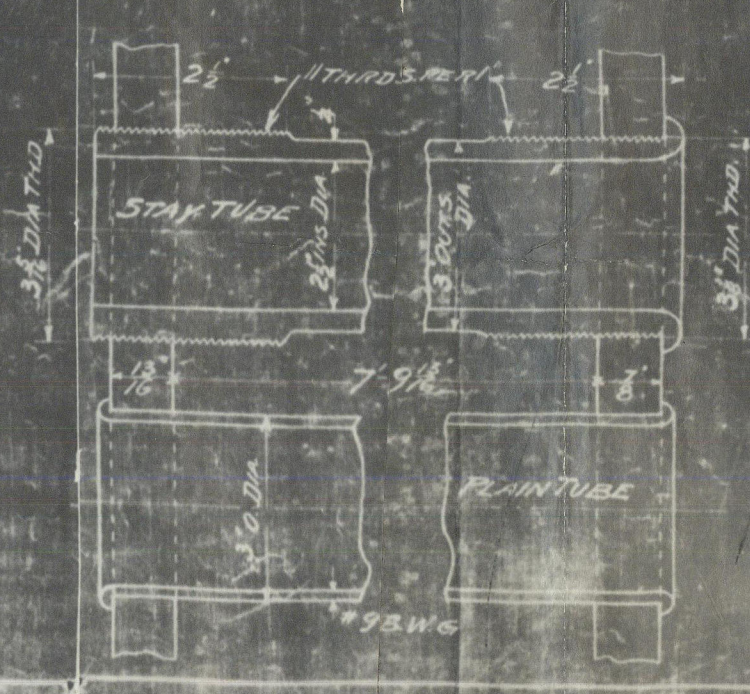
MAIN BOILER
 1. 2160 ft
 2. 270
 3. 370
 4. 2750
 5. 1356
 6. 185.9

BOILERS SHOWN TO
 1. 2160 ft
 2. 270
 3. 370
 4. 2750
 5. 1356
 6. 185.9

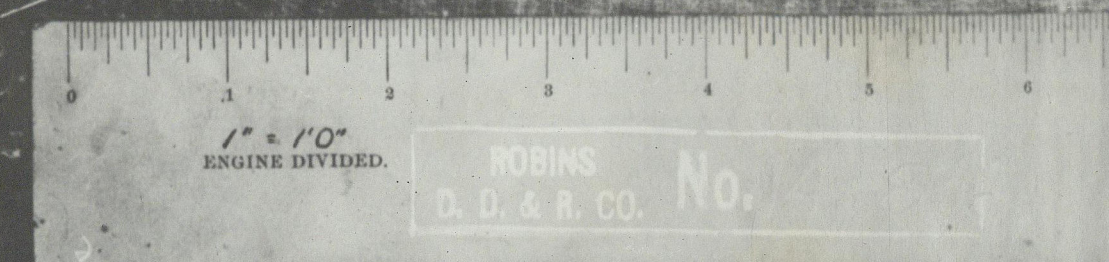
BOILERS SHOWN TO
 1. 2160 ft
 2. 270
 3. 370
 4. 2750
 5. 1356
 6. 185.9

BOILERS SHOWN TO
 1. 2160 ft
 2. 270
 3. 370
 4. 2750
 5. 1356
 6. 185.9

DATA
 1. 175 x 30" = 222 lbs.
 2. 120 x (13 x 12) x 0.72 = 275 lbs.
 3. (4.125 - 2.704) x 0.875 x 27000 = 228 lbs.
 4. 120 x 121 = 226 lbs.
 5. 215 x 4.125 x 35.56 = 12680 lbs.
 6. 2(4.125 - 2.704) x 0.875 = 228 lbs.
 7. 50 x (300 x 0.1375 - 2.431) = 223 lbs.
 8. 417 x 182.5 x 1.5 = 247 lbs.
 9. 13.46 - 6.75 x 8.5 x 3 = 223 lbs.
 10. 15600 x 0.656 = 223 lbs.
 11. AREA = 8.946 sq. ft. Load = 315 x 215 = 67725 lbs.
 12. STRAIN PER 10" = 7570 lbs.
 13. AREA OF STRAIN = 27.40 sq. ft.
 14. LOAD IN STRAIN = 1019300 lbs.
 15. AREA OF STRAIN = 177.20 sq. ft.
 16. STRAIN PER 10" = 8690 lbs.



2 MAIN BOILERS (USED)
 PROPOSED PIPING 119700
 3/4 OLYMPIC 174800



UNION IRON WORKS CO.
 ENGINEERS & BUILDERS
 100 N. 3rd St. NEW YORK, N.Y.

7-5-43

CASE No.

$\frac{5}{8}$ Olympic.

Boiler.

Gal. 4137.

W 109-0042



© 2020

Lloyd's Register
Foundation