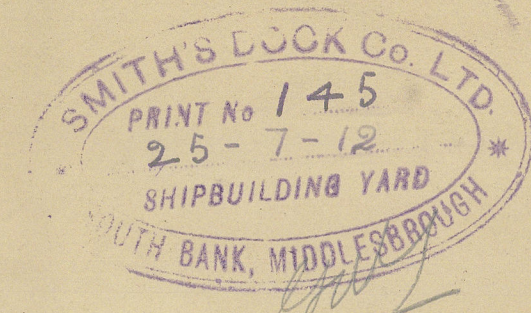


9. 8. 12

5/5 HARPORT.
VENTILATION ARRANGEMENT.

SCALE 1/8" = 1 FOOT.



All upcasts to be carried down
to within 1 foot of bottom

Steam jets to all upcasts
Wire gauges to be fitted to all coals both up & down cast

1/2 upcast
to down deck

upcast

upcasts to be
carried down

upcast
carried down

gaslight hatch
ventilated to Surveyor's satisfaction

upcast carried down

upcast to Surveyor's
satisfaction as close to this
as possible

1/2 downcast

1/2 downcast to turn
deck

Wood Bldg

upcast
to Surveyor's
satisfaction

1/2 downcast
to Surveyor's
satisfaction

1/2 downcast
to Surveyor's
satisfaction

1/2 downcast
to Surveyor's
satisfaction

1/2 downcast
to Surveyor's
satisfaction

1/2 downcast
to Surveyor's
satisfaction

1/2 downcast
to Surveyor's
satisfaction

1/2 downcast
to Surveyor's
satisfaction

1/2 downcast
to Surveyor's
satisfaction

ELECTRIC LIGHTING IN TUNNEL

Light in Engine Room
12 Fixed + 2 Portable

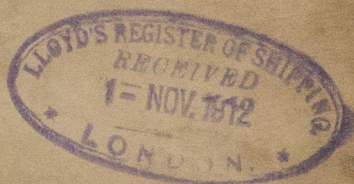
In Stowage

S.S. Harport

Arrangement of Ventilation

Great Smith Dock St

Reab. Report ybad



W109-0022



© 2020

Lloyd's Register
Foundation