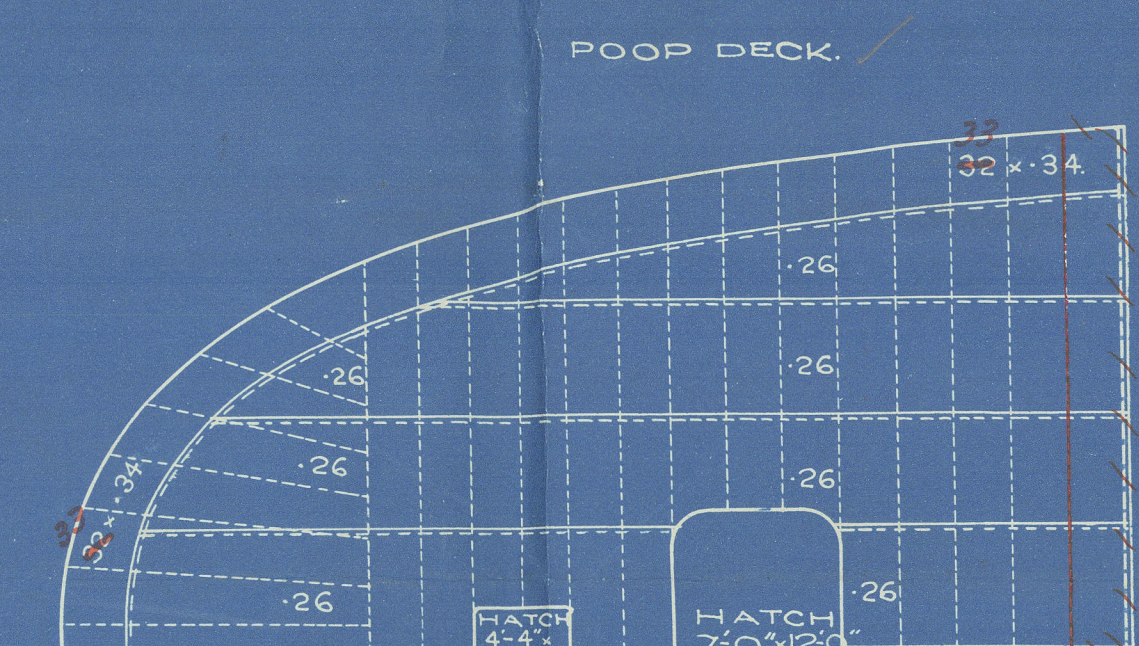
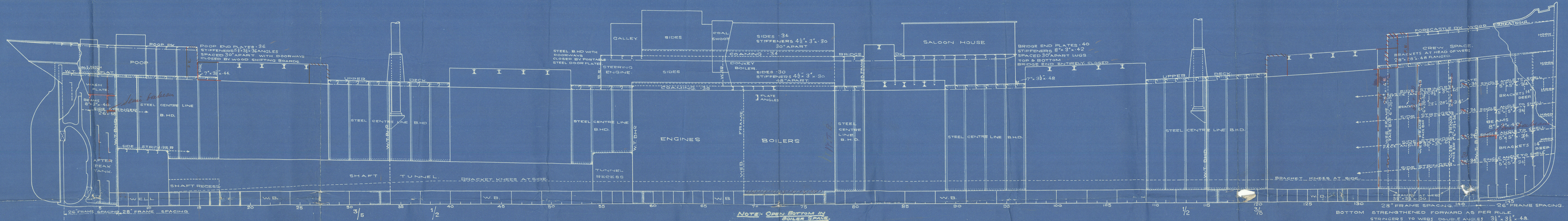
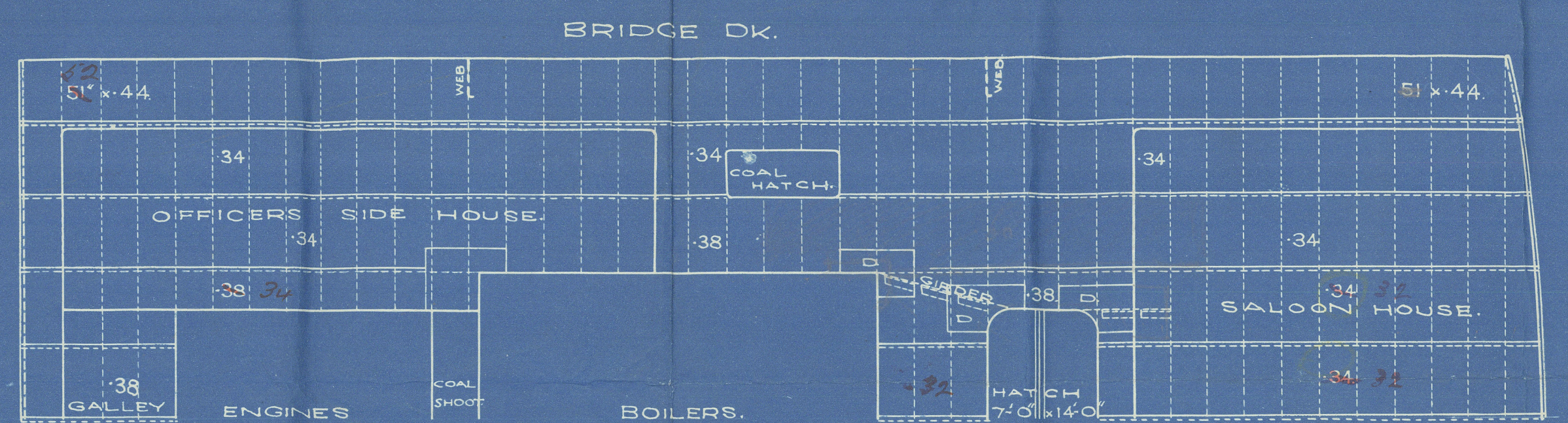


4.8.22

N^o 472.
PROFILE & DECK PLANS
 DIMENSIONS AS PER RULE
 LENGTH B.P. 347'00
 BREADTH MLD. 48'79
 DEPTH MLD. 26'70
 FULL SCANTLING VESSEL CLASS **100A.1**
 SCALE $\frac{1}{8}$ " = 1 FOOT

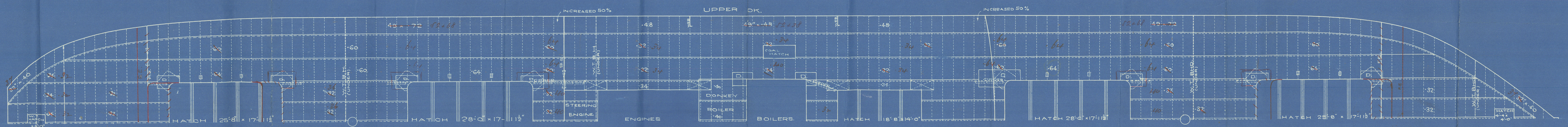
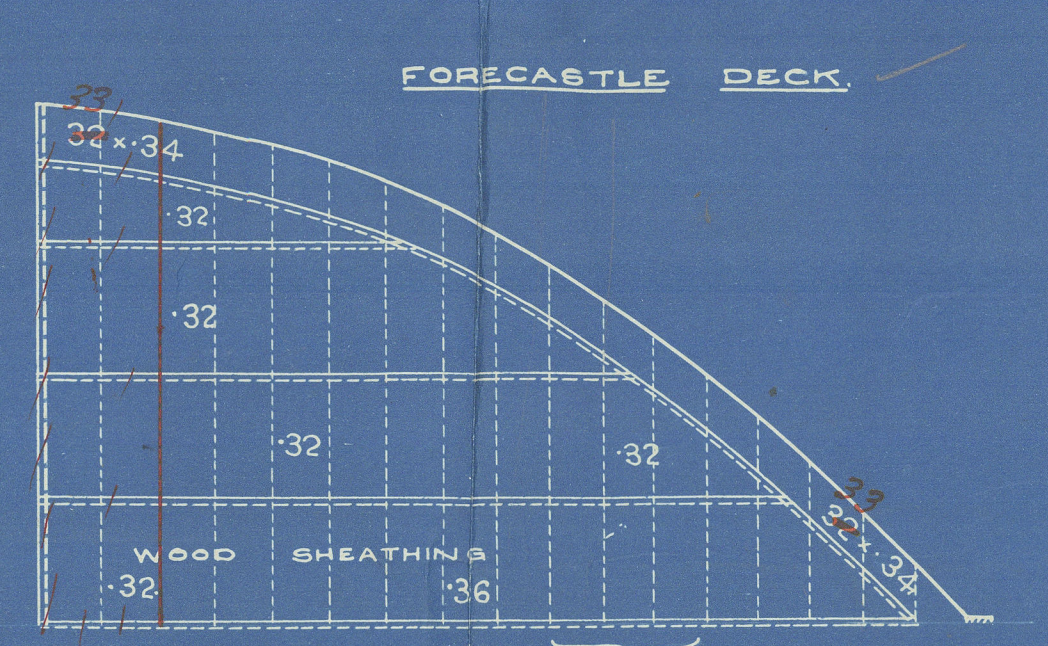


JOHN READHEAD & SONS LTD
 SHIPBUILDERS ENGINEERS, ETC
 SOUTH SHIELDS.



PARTICULARS FOR FREEBOARD.

LENGTH BETWEEN PERPS	347'0"
BREADTH EXTREME	48'0"
DEPTH MOULDED TO UPPER DK AT MIDDLE OF LEN	26'8"
" OF HOLD (CELL DOUBLE BOTTOM TO UPPER DK)	24'4"
TONNAGE UNDER DK (UPPER)	3455 TONS
COEFFICIENT OF FINES	30.0
LENGTH OF POOP	32'4" AT SIDE 32'4" AT CENTRE 7'0" HIGH
" " BRIDGE	93'4" AT SIDE 93'4" " 7'0" "
" " FORECASTLE	32'3" AT SIDE 32'3" " 7'0" "
SCANTLINGS 100 A.1. FULL SCANTLING VESSEL	
ROUND OF BEAM	11"
SHEER AFTER SIDE STERN POST	4'5" FORE SIDE STEM 8'6"
" LENGTHWISE	2'5" ALEN FROM " 4'6"
UPPER DECK NOT SHEATHED WITH WOOD	



4.8.22

S. 472

Memorandum

Approved Profile & De Jure

S. S. "Steelville"

NEWSPAPER ON TIME.

Report No. 46446.

Indexing

PETAIN



© 2020

Lloyd's Register
Foundation

W1086-0211