

SUNDERLAND ENGINE WORKS

BOILER

TRACING 2521

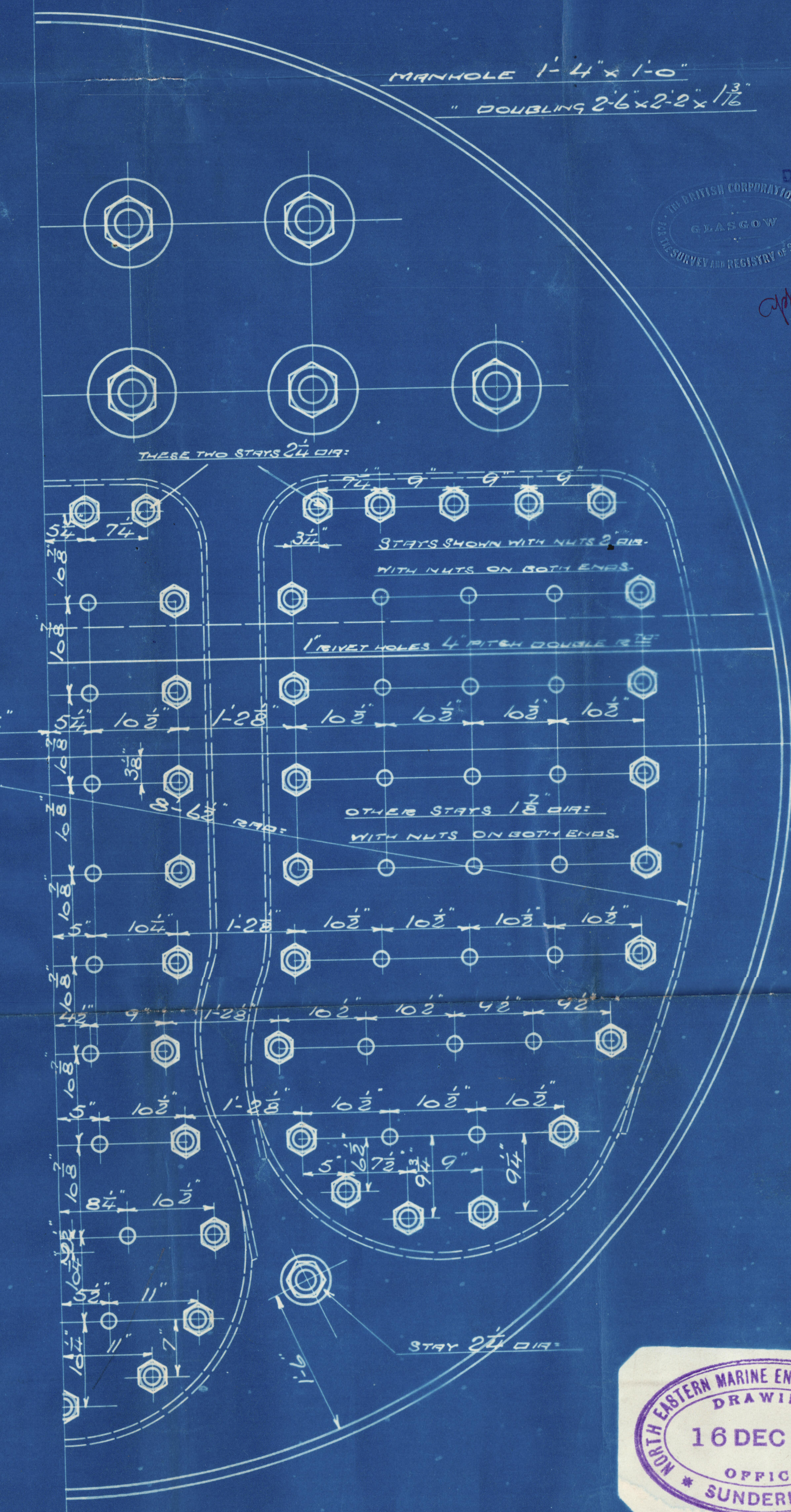
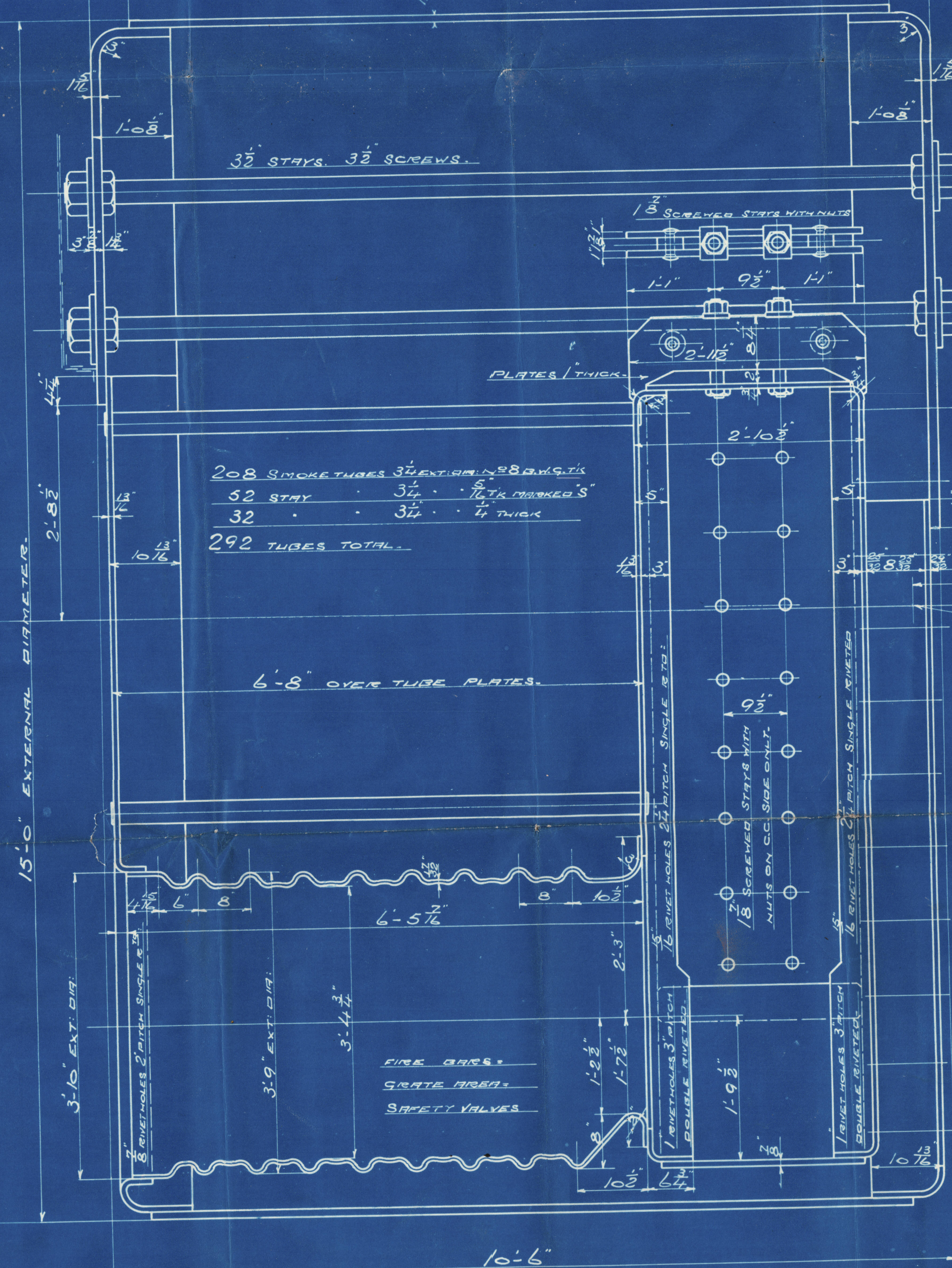
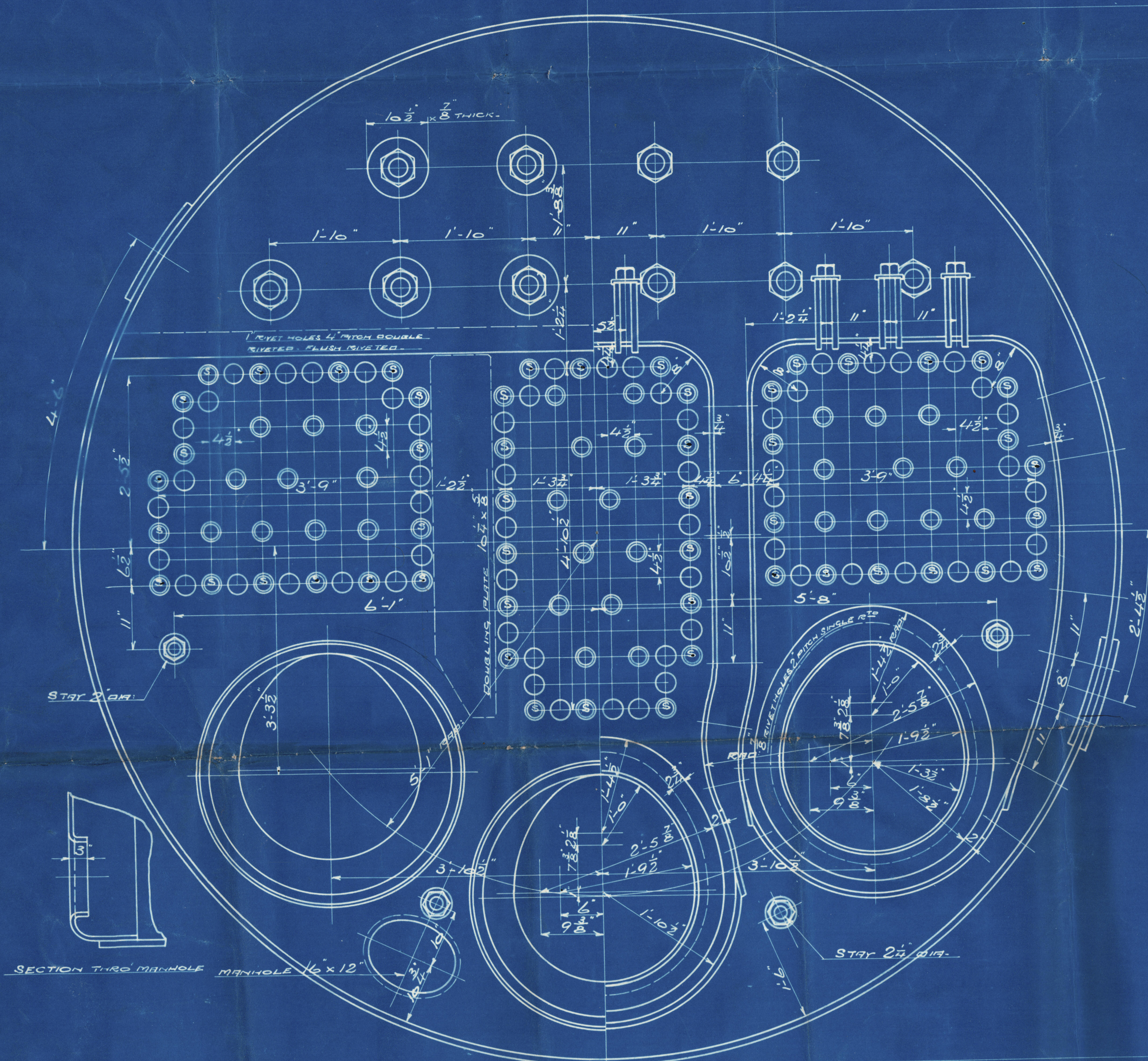
SCALE.— 1 INCH TO A FOOT

SCHEDULE "L"

WRITTEN DIMENSIONS ONLY TO BE TAKEN

APPROVED BY BRITISH CORP.

TO PASS BRITISH CORPORATION SURVEY					
SHELL =	$\frac{20.94 \times .44}{(19-1)85}$	=			180.4 LBS PER SQ.
	177.622				
WORKING PRESSURE	=				180 " "
TEST	"	=			360 " "
HEATING SURFACE ON TUBES					1656 SQ. FEET
"	"				
"	OTHER PARTS				464 " "
"	TOTAL				2120 " "
EX: FRONT TUBE PLATE					2080 " "
EFFECTIVE AREA OF STAYS					
$\frac{3\frac{1}{2}''$ STAY TUBES WITH 9 THREADS PER INCH					2.1739 INCHES ²
$\frac{3\frac{1}{2}''$ " " " " " " " " " " " "	4	9			1.64 " "
$\frac{3\frac{1}{2}''$ MAIN STAYS	6				8.48 " "
$\frac{2\frac{1}{2}''$ " " " " " " " " " " " "	6				3.26 " "
$\frac{2''$ " " " " " " " " " " " "	6				2.51 " "
$\frac{2''$ SCREWED " " " " " " " " " " " "	11				2.79 " "
$\frac{1\frac{1}{8}''$ " " " " " " " " " " " "	11				2.43 " "
ALL PLATES RIVETS & STAYS - STEEL -					
TUBES - WROUGHT IRON -					
HOLES TO BE DRILLED IN PLATES AFTER BENDING.					
TENSILE STRENGTH OF SHELL PLATES & BUTT JOINTS NOT LESS THAN 28% ^{3"}					
" " " " " " " " " " " "					
" GIRDER STAYS " " " " " "					
" GIRDER PLATES " " " " " "					



DRAWN BY *J.A.S.*
CHECKED BY
TRACED BY *frd.*
CHECKED BY *J.A.S.*
TRACING No. *16-12-57*

CONTRACT 1825 1 OFF

W1085-0163
Lloyd's Register
Foundation

North Eastern Marine
Eng. Co's. No 1825
for
Sunderlands
No 248

Main Boilers

S.S. Odland

BALLYHOLME BAY



Lloyd's Register
Foundation