

STEEL BOILERS

To Lloyds requirements for a working pressure of 180 lbs per sq. inch. Test pressure 320 lbs per sq. inch.

All plates, rivets, stays & girders of Steel.

Tubes of Wrought Iron.

SCALE: ONE INCH = ONE FOOT.

ENGINE

S70 3 OFF
S71 3 OFF

Intended for Messrs Bartram & Sons Ltd's 256

Intended for Messrs Bartram & Sons Ltd's 257

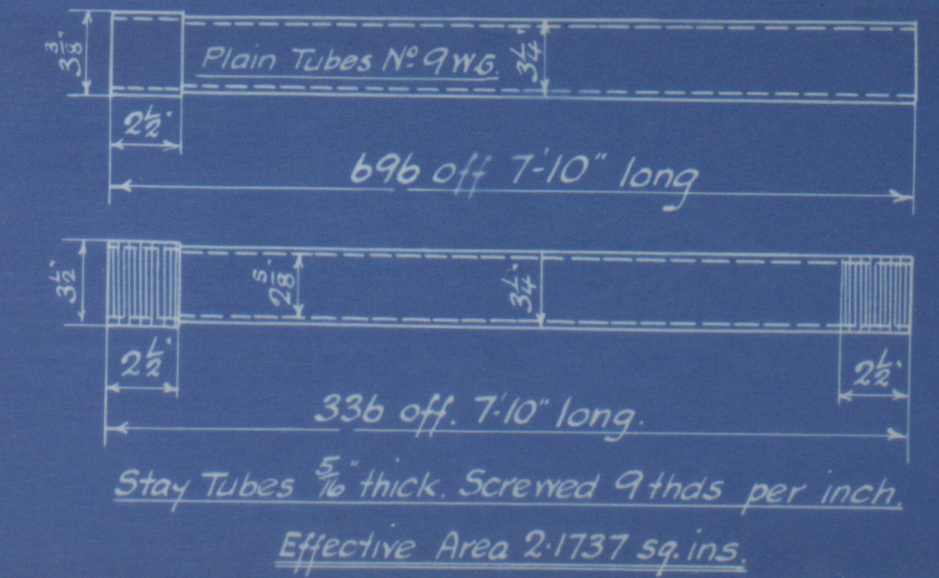
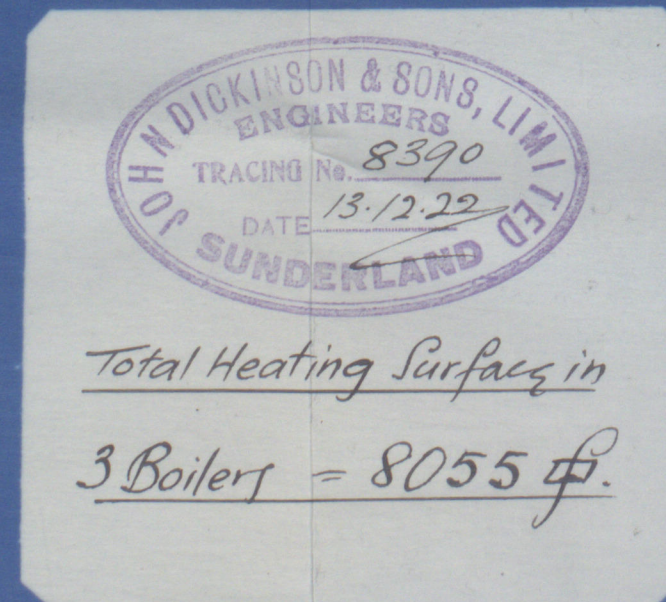
DATE FURNACES

Dec: 13th 22 Deighton's Section

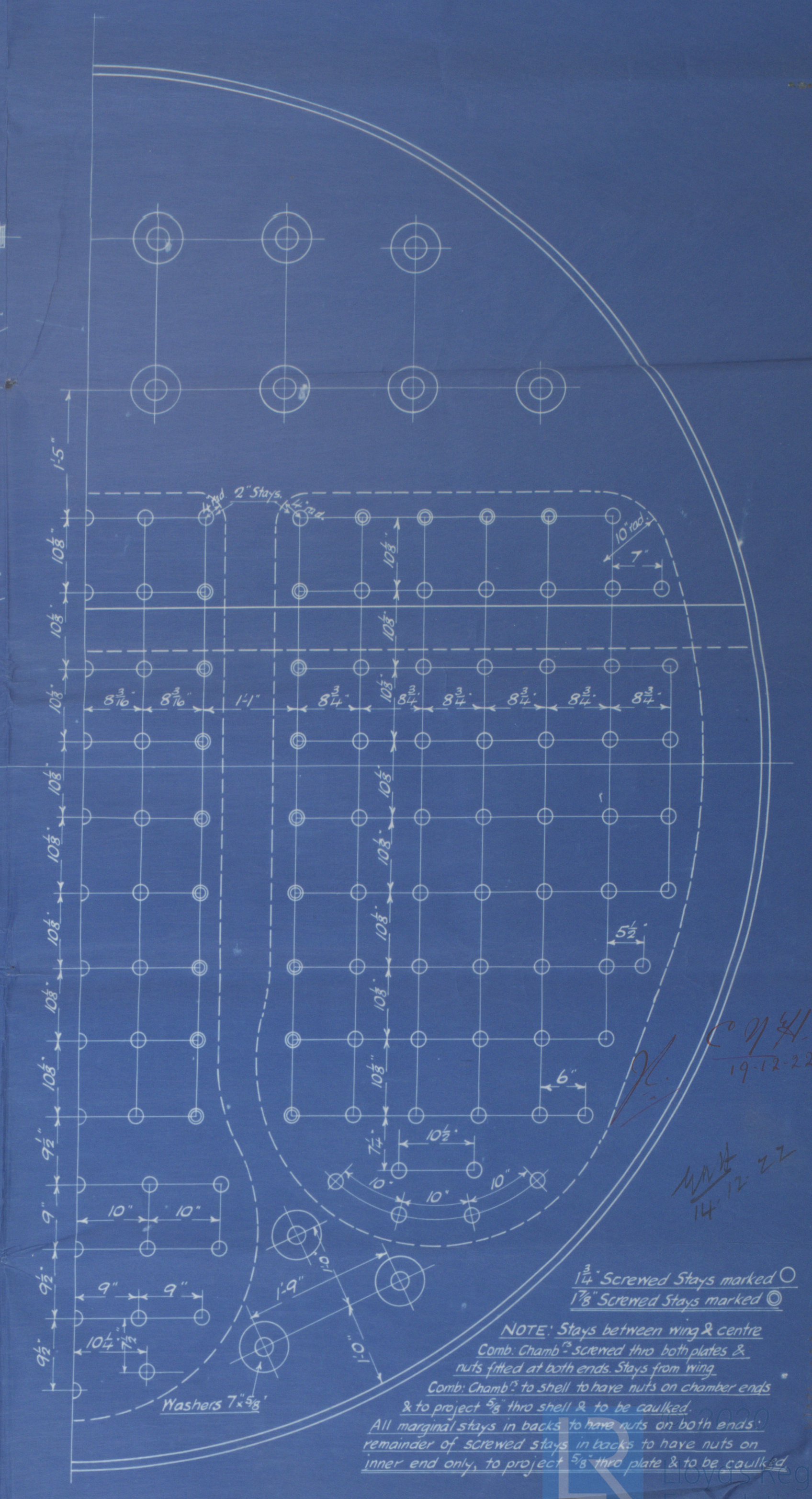
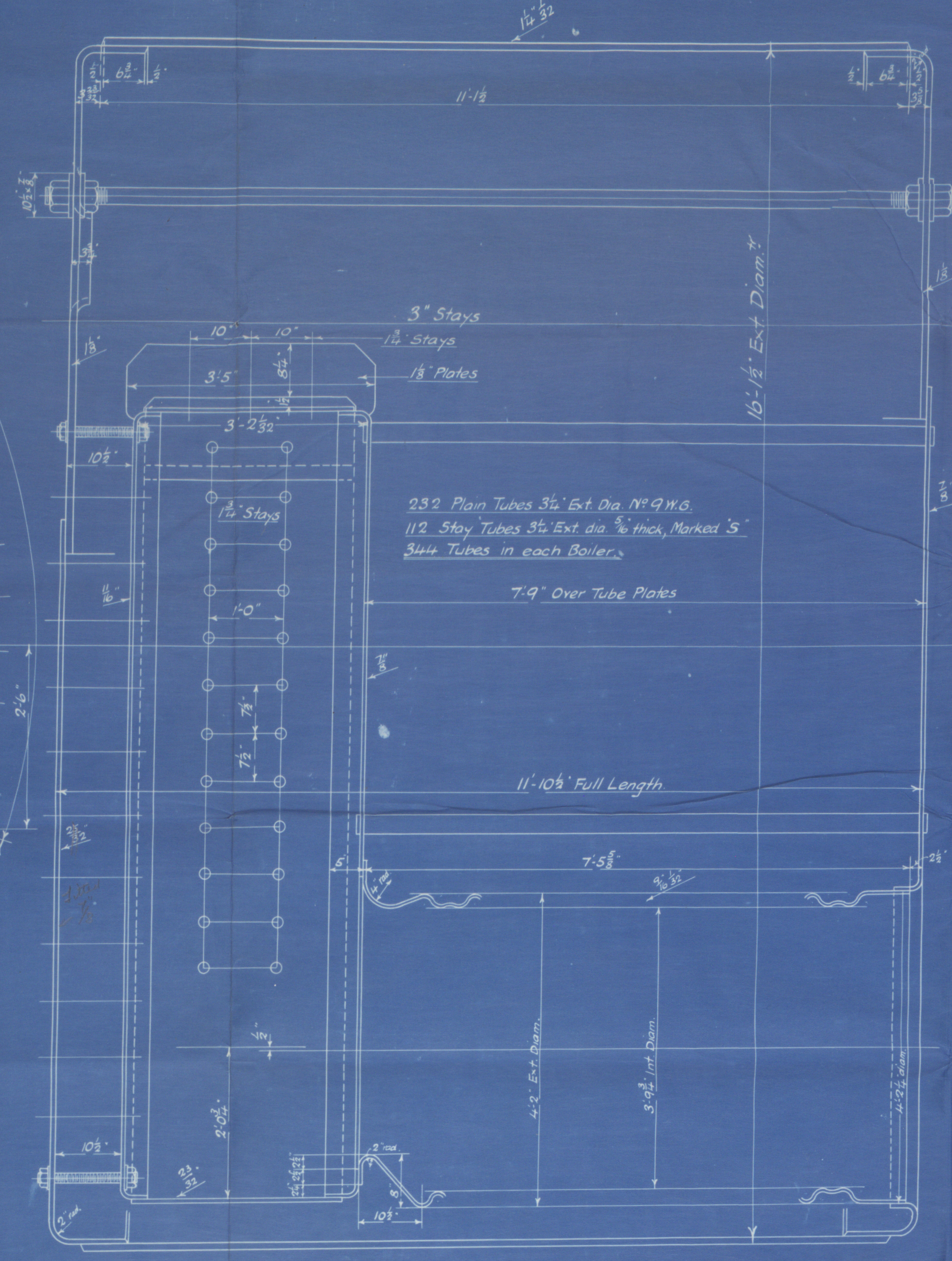
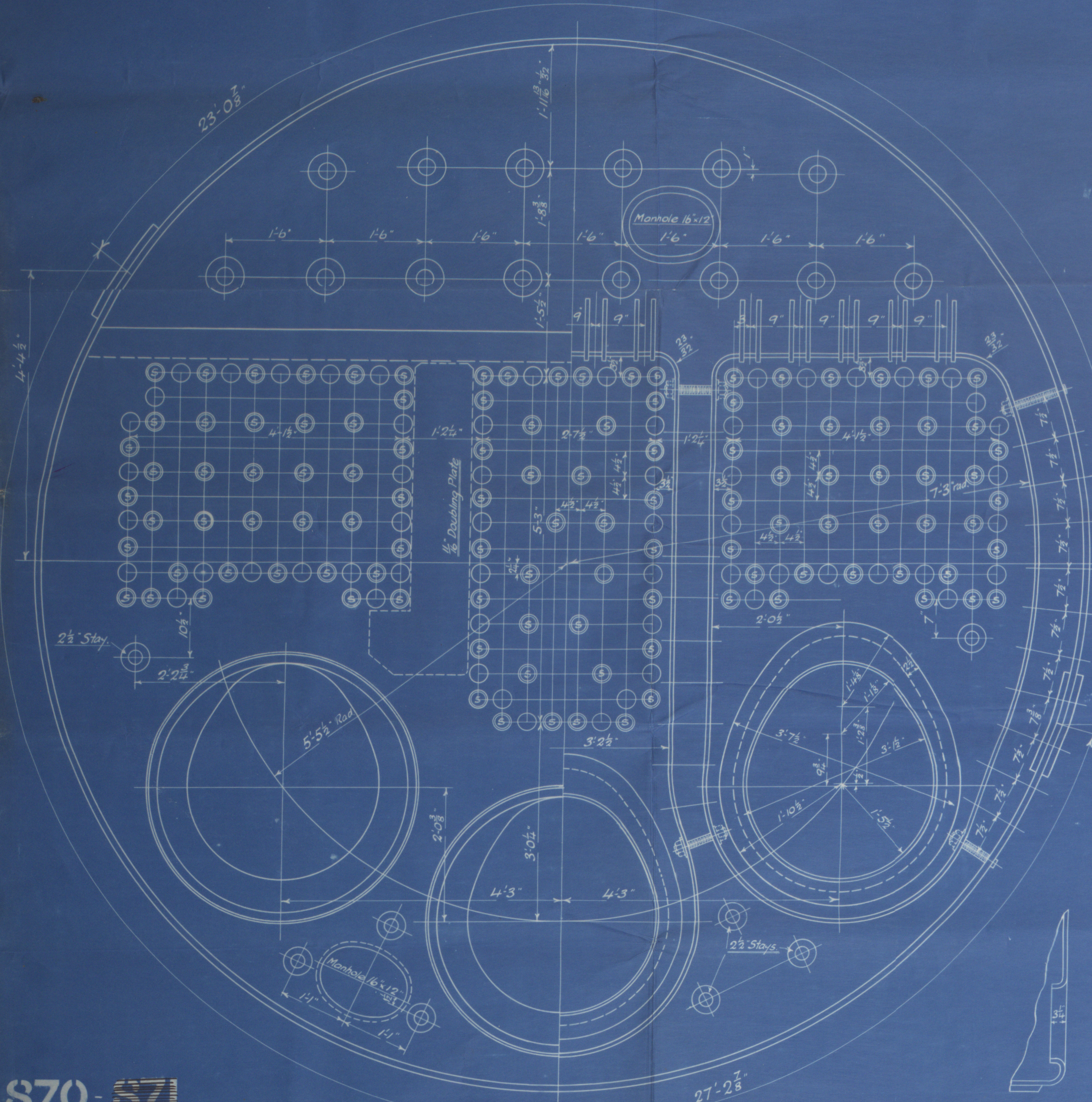
Dec: 13th 22 Deighton's Section

TENSILE STRENGTH	
Plate	Tons per sq. inch
Shell Plates, Butt Straps	28 to 32
Comb. Chamber Girders	28 to 32
All other plates	26 to 30

RIVETING	
Position	Riveting
Front & Back Seams	Double
Comb. Chamb. Longitudinal Seams	Single
Comb. Chamb. & Furnace Seams	Single



Working Press.	Thrupass.	Eff. Area	Eff. Area	No. in
26	1 1/2	1.6078	2.031	285
to	1 1/8	1.7327	2.355	44
30	2	1.8577	2.690	4
28	2 1/2	2.2868	4.13	8
to	3	2.786	6.1	14



NOTE: Stays between wing & centre Comb. Chamb. to be fitted with nuts on both ends. Stays from wing Comb. Chamb. to shell to have nuts on chamber ends & to project 3/8" thro shell & to be caulked. All marginal stays in backs to have nuts on both ends. remainder of screened stays in backs to have nuts on inner end only, to project 3/8" thro plate & to be caulked.

S70-S71

DICKINSON'S 870

MAIN BOILERS
FOR
BARTRAM & SONS
5/12 56

3SE
180 W.P.

No. 2333
LLOYD'S TEST
320 lbs.
WP-180 LBS
L.C.D. 115

"Buckley"

Std. 2983

RETAIN



© 2020

Lloyd's Register
Foundation

W1084-0086