

Also Nos 440.442.

MIDSHIP SECTION.

S.S. No 438.550-0 x 67-0 x 47-0 K to B.

LLOYD'S 100 A1 AWNING DK. CLASS.

SCALE 1/2"=1 FT.

6.8.12  
14.10.12 (No 440)  
29.2.13  
11.4.13 (No 442)  
9.10.13  
28.10.13

NUMERALS.

67' 47" 8" - B + D - 105' 0" 1st NUMERAL.  
550 x 106 - L (B+D) - 58,500 2nd do.  
58,500 + 6971 + 1829 - 67,100 EQUIPMENT.

PROPORTIONS.

DEPTHS TO LENGTH - 9' 92" TO BRIDGE DK.  
- 11' 10" TO AWNING DK.  
BREADTHS TO LENGTH - 8' 81."

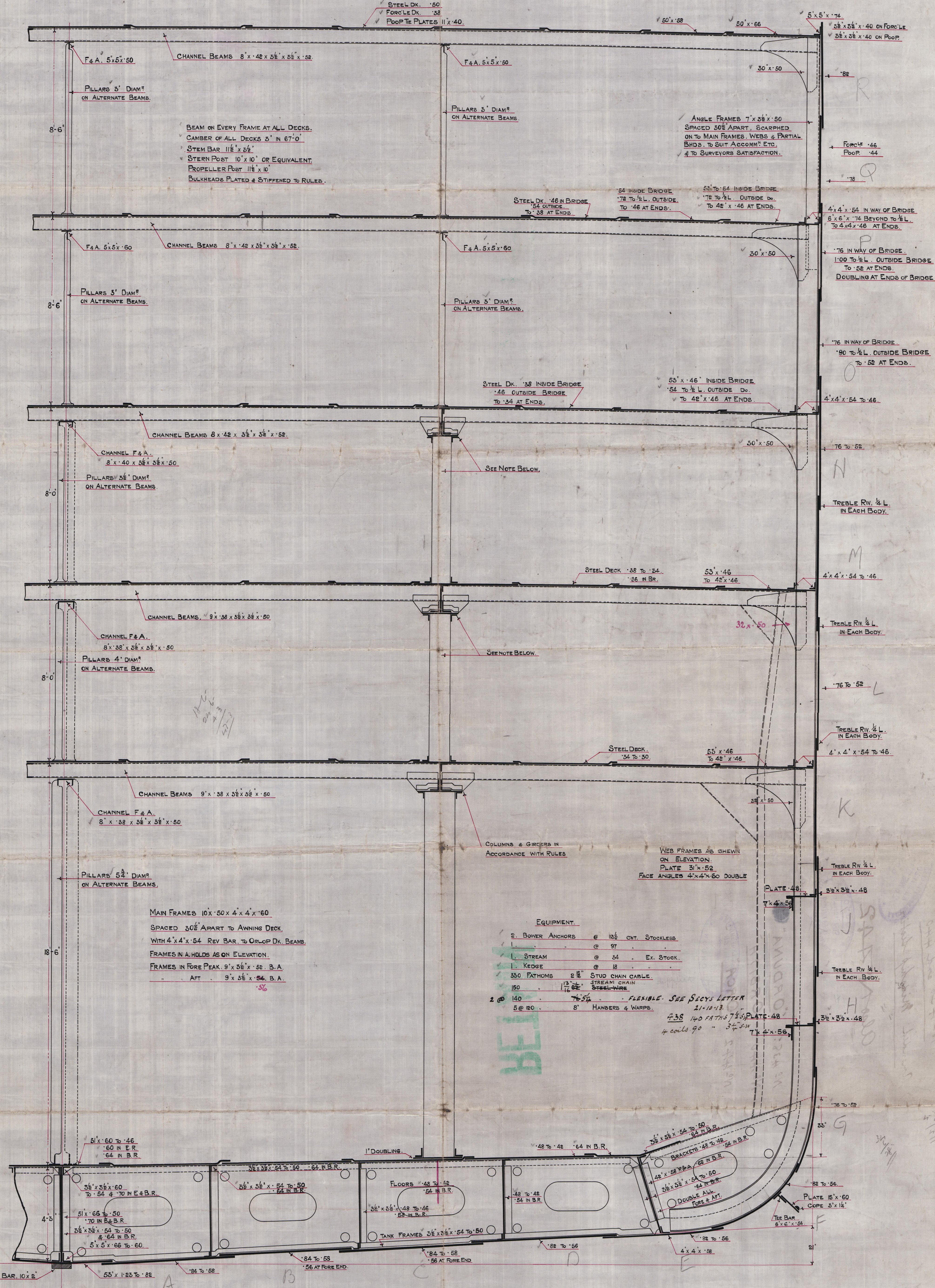
SHADE DECK.

AWNING DECK.

MAIN DECK.

LOWER DECK.

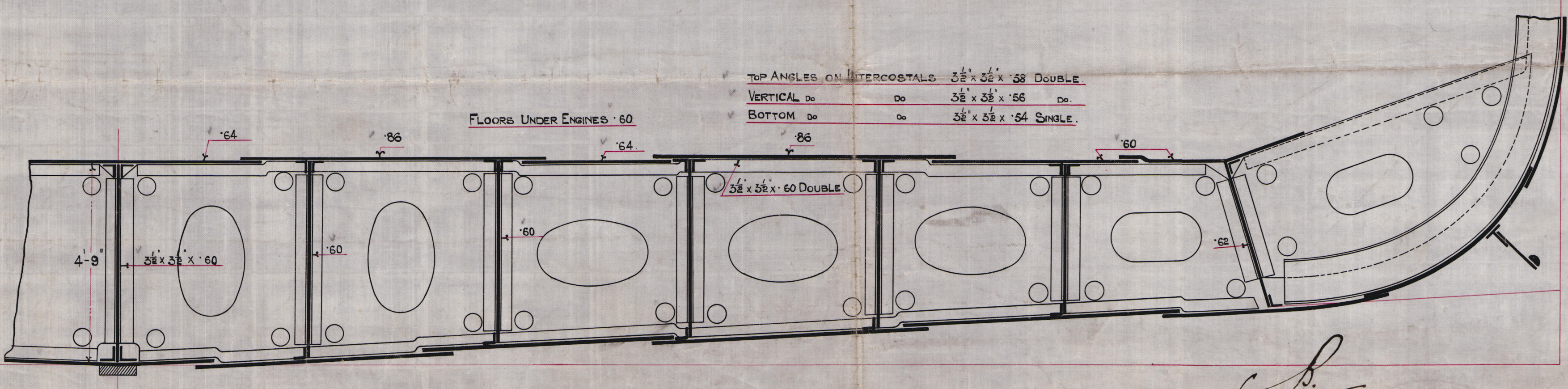
ORLOP DECK.



EQUIPMENT.

2 BOWER ANCHORS @ 12 1/2 CWT. STOCKLESS  
@ 97  
1 STREAM @ 34 Ex. STOCK  
1 KEDGE @ 18  
350 FATHOMS 2 1/2" STUD CHAIN CABLE  
150 1 1/2" STEEL WIRE  
2 @ 140 7/16" FLEXIBLE. SEE SECY'S LETTER 21-10-13  
5 @ 80 8" HAWKERS & WARPS  
4 coils 90 3 1/2" PLATE 48  
7 x 4 x 56

SECTION IN WAY OF ENGINES.



6.8.12 25-7-12  
Z.M.



Harland & Wolff.

Nº 438 and 440

Amended Midship Section

Also Nº 442

Nº 438.

"ORDUNA"

Nº 440

"ORBITA"

Nº 442

"ORCA"

Ref 7968

RETAIN



© 2021

Lloyd's Register  
Foundation

W1080-0030