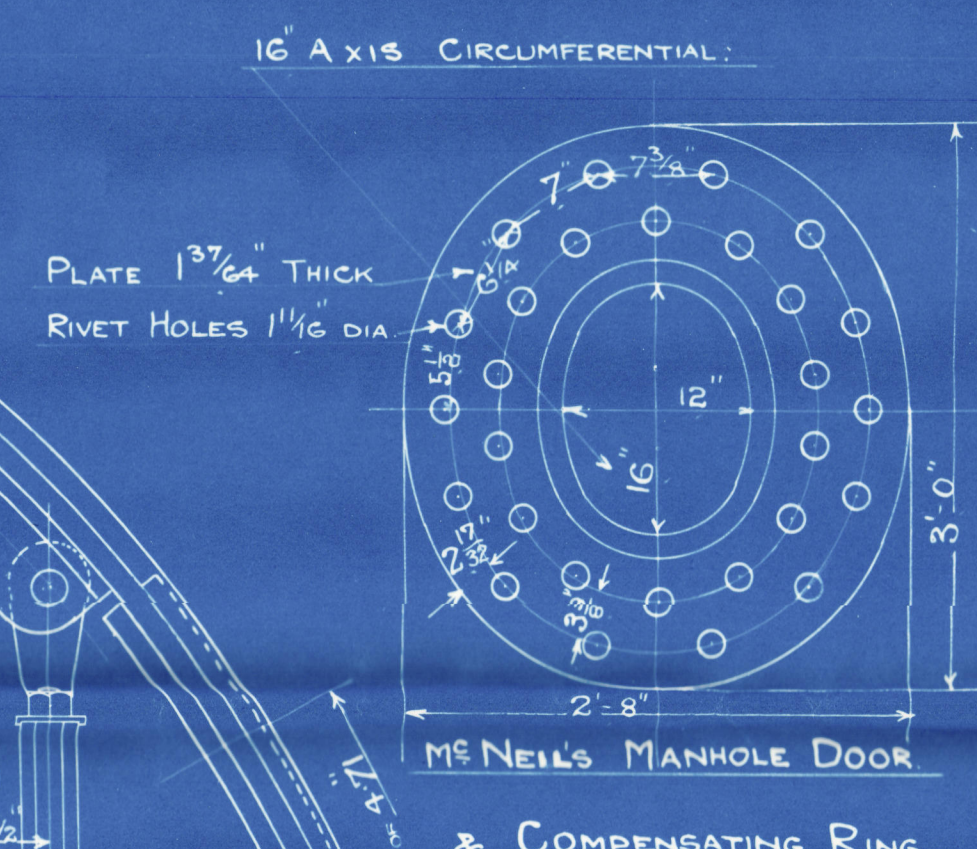




27/9/12



NOTE: ALL STAY TUBES TO BE SCREWED 10-THREADS PER INCH



DEVELOPMENT OF T BAR "B"

WORKING PRESSURE 215 LBS PER SQ INCH

TEST " 430 L85

NATURAL DRAUGHT.

RIVETS IN FURNACES
COMB. CHAMBERS TO BE
FINISHED AS SHOWN


G-OFF.

MAIN BOILER, N^o 438.

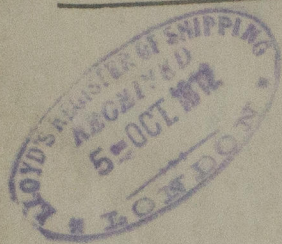
UNDER SURVEY OF BOARD OF TRADE & LLOYDS.

23-9-12

Belfast -
Harland & Wolff L^{rs}
S.S. 438

Main Battery
S.S. Orduna 
~~S.S.~~
H.M.S. Orbita

Mean Sun to Lloyd's



RETAIN

W1080-0029



© 2021

Lloyd's Register
Foundation