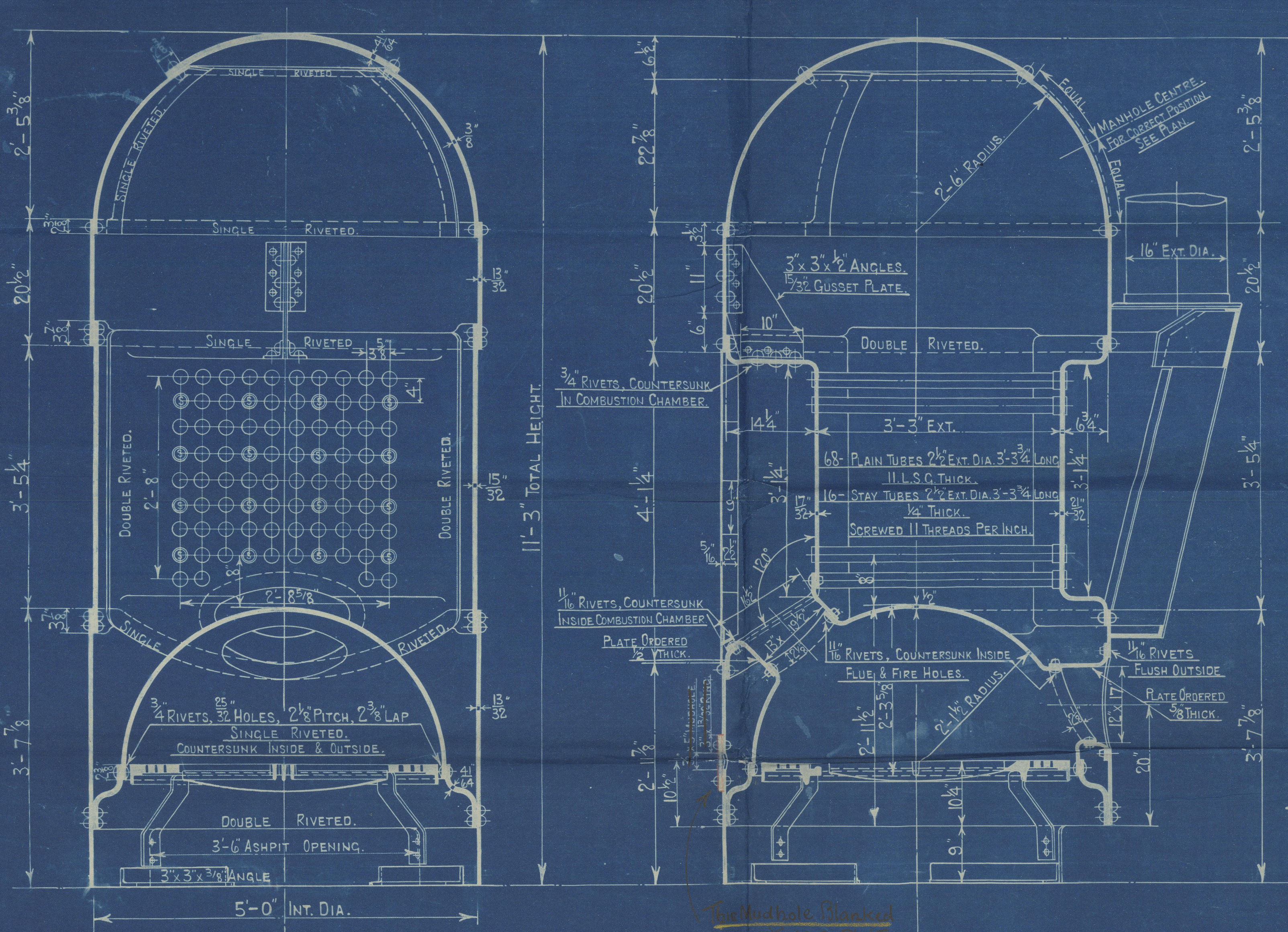


COCHRAN PATENT VERTICAL MULTITUBULAR BOILER.

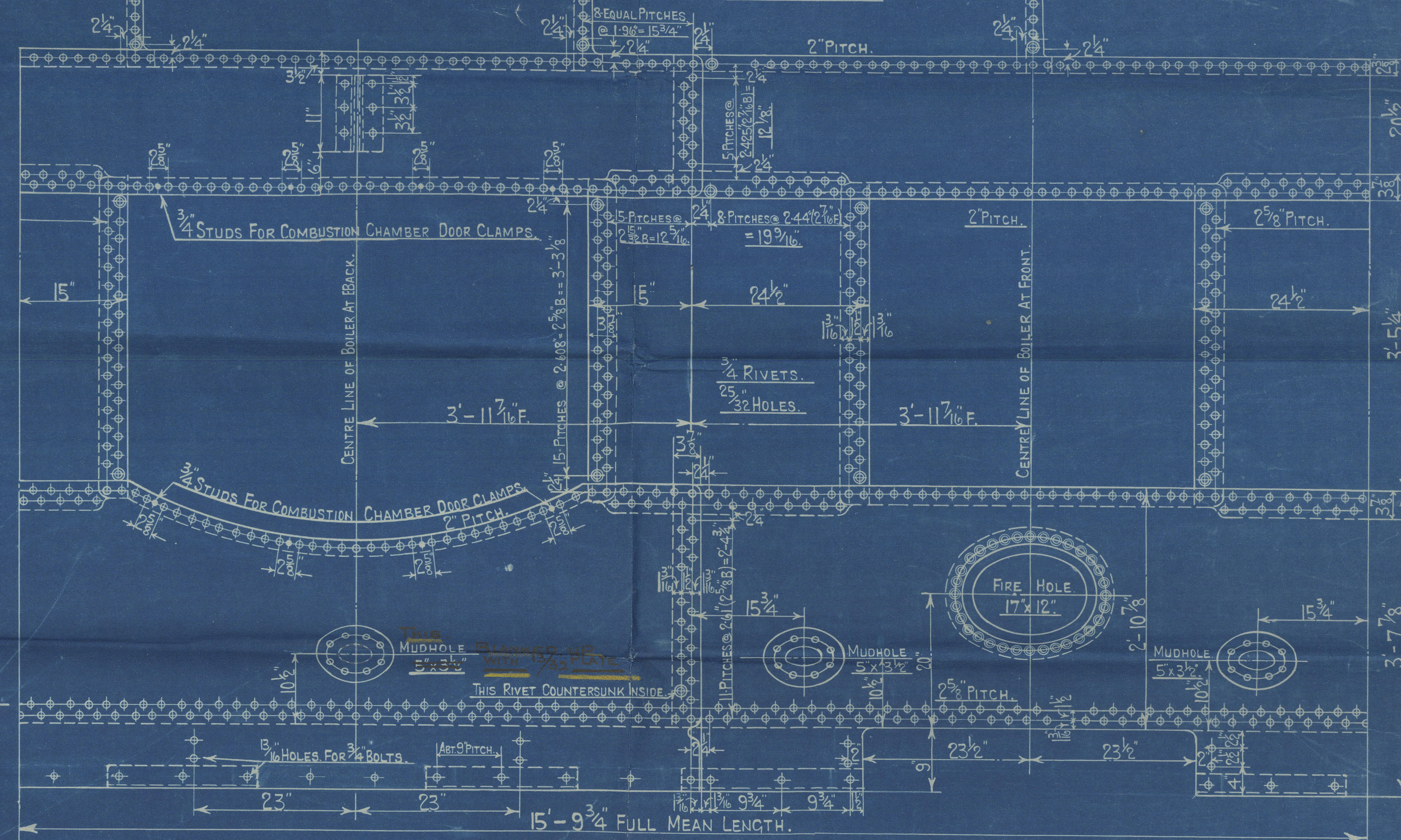
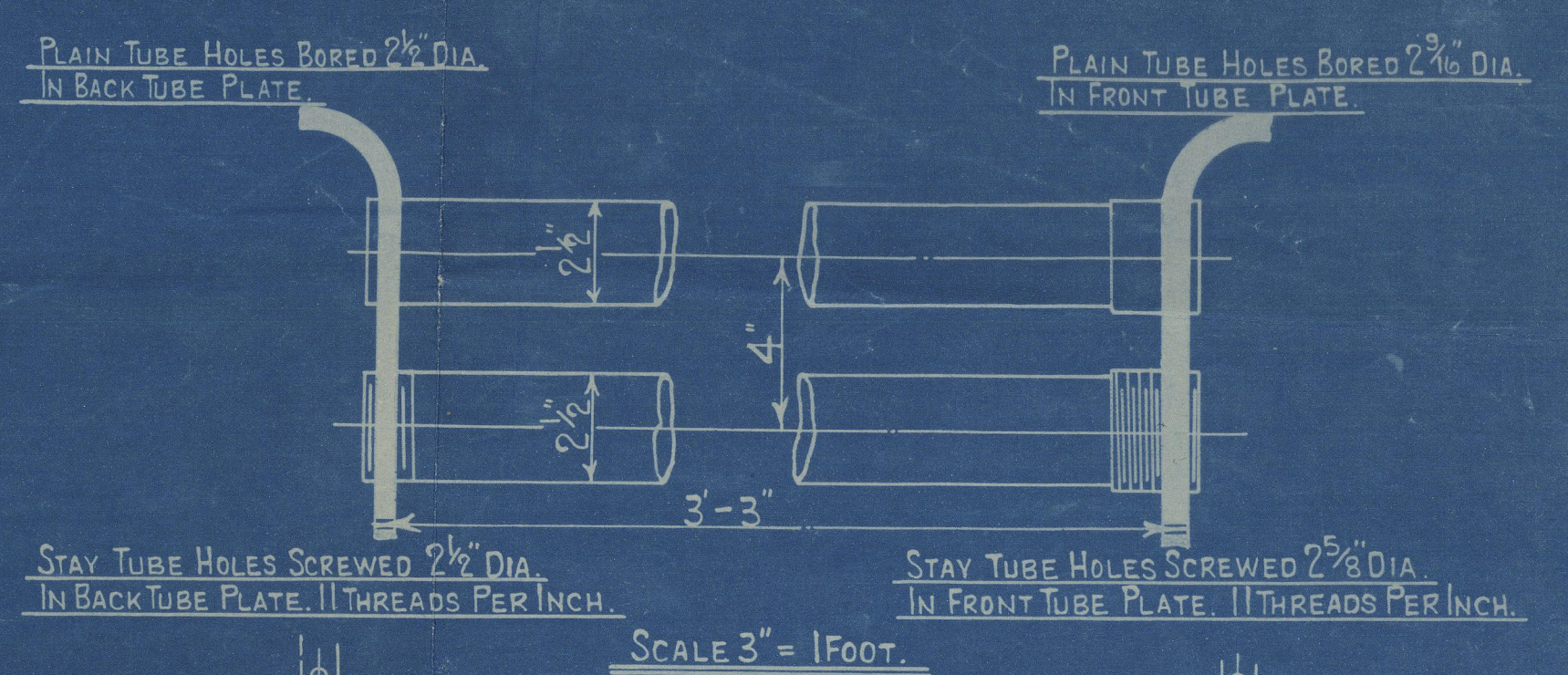
HORIZONTAL FLUE TUBES.



HEATING SURFACE.		
TUBES.	173. Sq. Ft.	
PLATE.	47. Sq. Ft.	
TOTAL.	220. Sq. Ft.	
GRATE AREA.	125. Sq. Ft.	

LLOYDS.		
PLATE.	2.425 x 78.125 x 100	= 67.7 %
RIVETS.	2 x 4.932 x 85	= 76.8 %
FRONT TUBE PLATE.	4 x 2.59375 x 100	= 35.1 %
BACK TUBE PLATE.	4 x 2.5 x 100	= 37.5 %
SHELL.	20.5 (16.5 - 2) 67.7	= 104. LBS.
FRONT TUBE PLATE.	20.5 (10.5 - 2) 35.1	= 102. LBS.
BACK TUBE PLATE.	20.5 (8.5 - 2) 37.5	= 103.8 LBS.
FURNACE.	1250 x (8-2)	= 147. LBS.
BUREAU VERITAS.		
PLATE.	677 x 31400 (40625 - 04)	= 129.7 LBS.
RIVETS.	2 x 2 x 4.932 x 24 x 2240	= 131.6 LBS.
FRONT TUBE PLATE.	10400 x 4.932 (4-2.593)	= 127. LBS.
BACK TUBE PLATE.	10400 x 5.312 (4-2.5)	= 109.6 LBS.
FURNACE.	600 (8-2)	= 141. LBS.

COCHRAN & CO. ANNAN L^Y.
ENGINEERS & BOILERMAKERS
ANNAN, SCOTLAND.



BOARD OF TRADE.		
PLATE.	2.425 x 78.125 x 100	= 67.7 %
RIVETS.	23 x 2 x 4.932 x 4.9	= 80. %
FRONT TUBE PLATE.	4 x 2.59375 x 100	= 35.1 %
BACK TUBE PLATE.	4 x 2.5 x 100	= 37.5 %
SHELL.	28 x 2240 x 67.7 x 2 x 406	= 116. LBS.
FRONT TUBE PLATE.	26 x 2240 x 35.1 x 4.5	= 132. LBS.
BACK TUBE PLATE.	26 x 2240 x 37.5 x 5.31	= 169. LBS.
FURNACE.	14000 x 4	= 137. LBS.

*The Plate is similar to S. N. 8918, approved 5-2-12.
Except the Back Mudhole is Blanked up.*

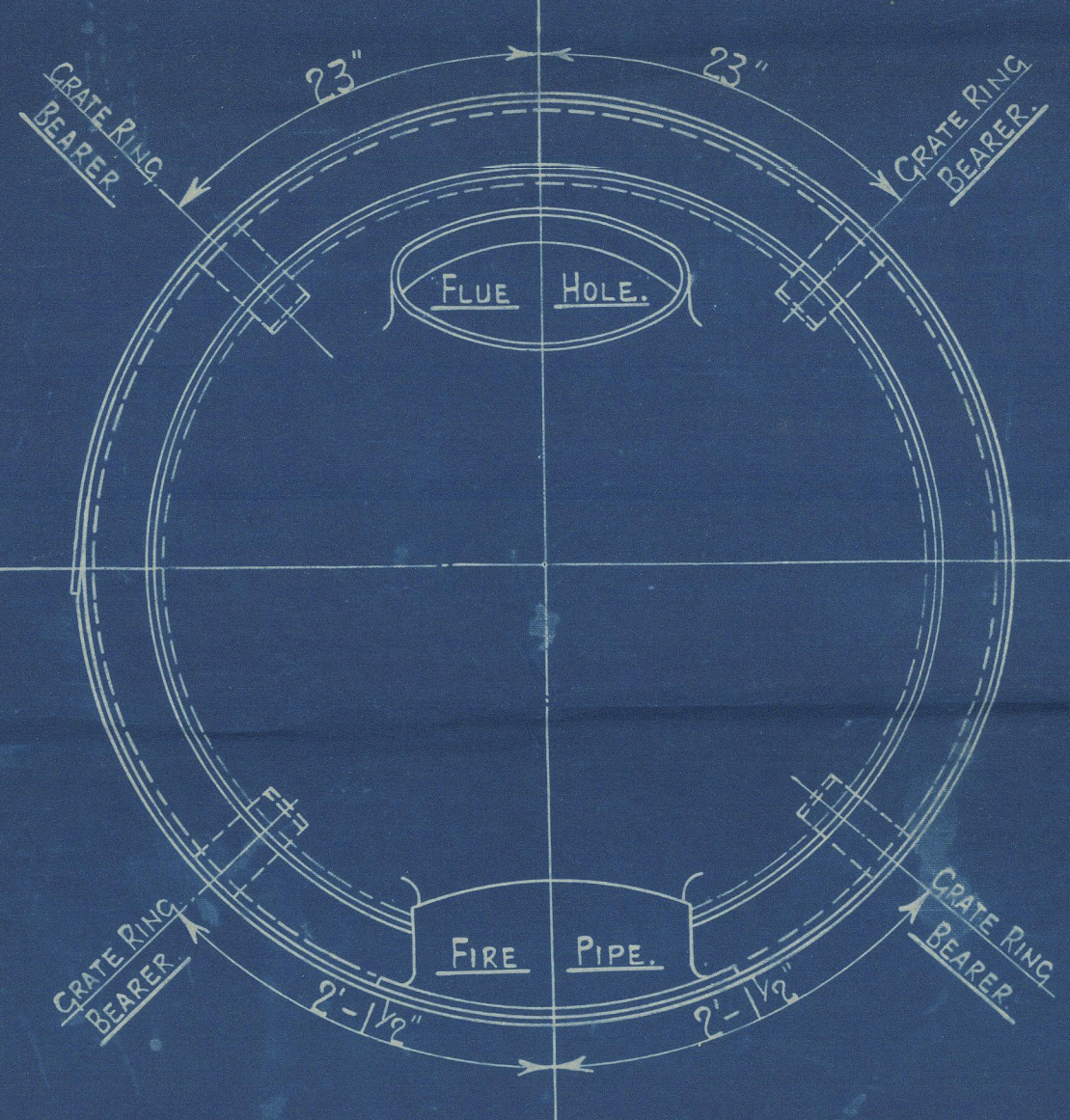
PATENT BOILER N^o 8244

5'-0" x 11'-3" x 220" x 100 LBS.

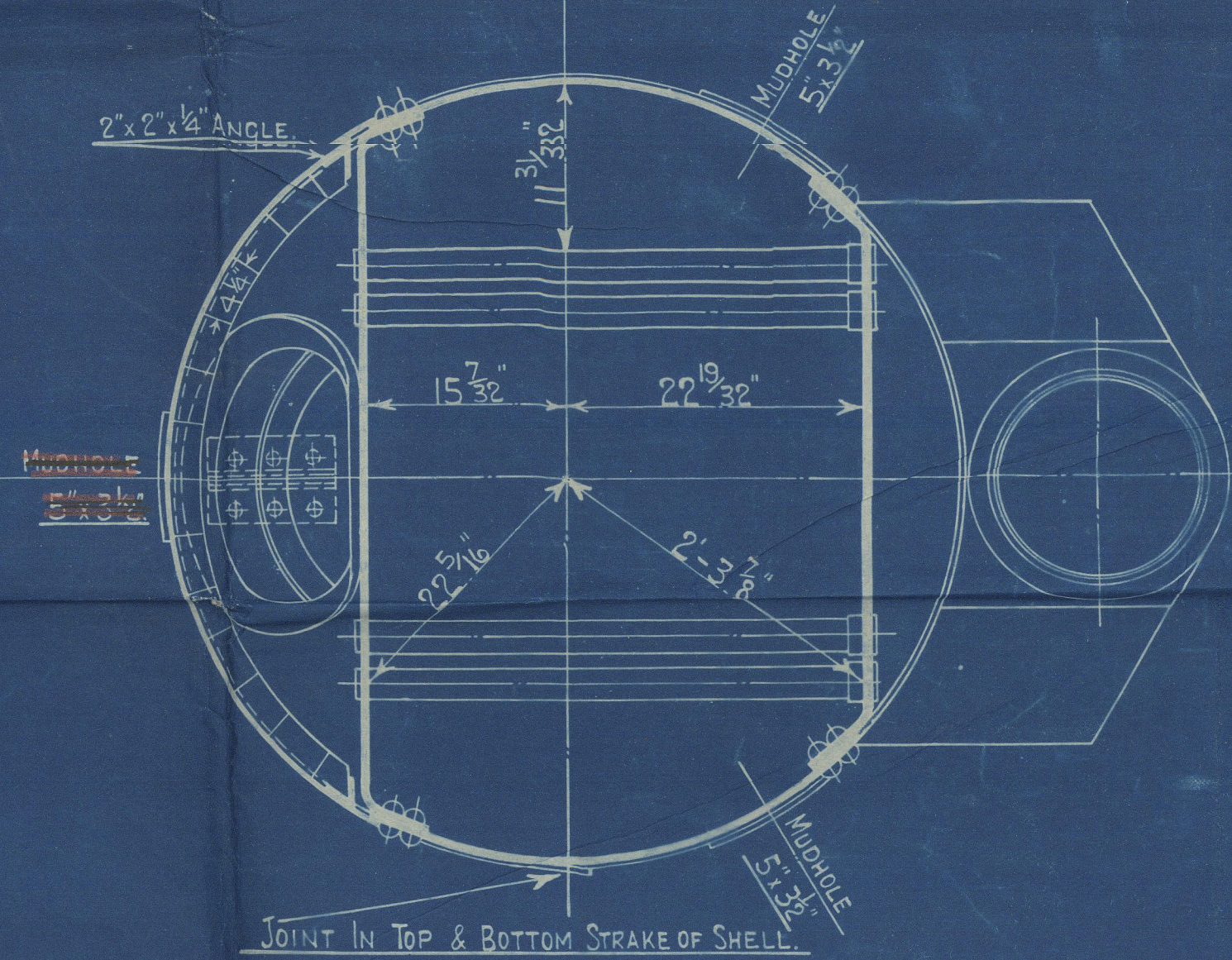
SCALE 1 INCH TO 1 FOOT.

SIEMENS MARTIN MILD STEEL PLATES.

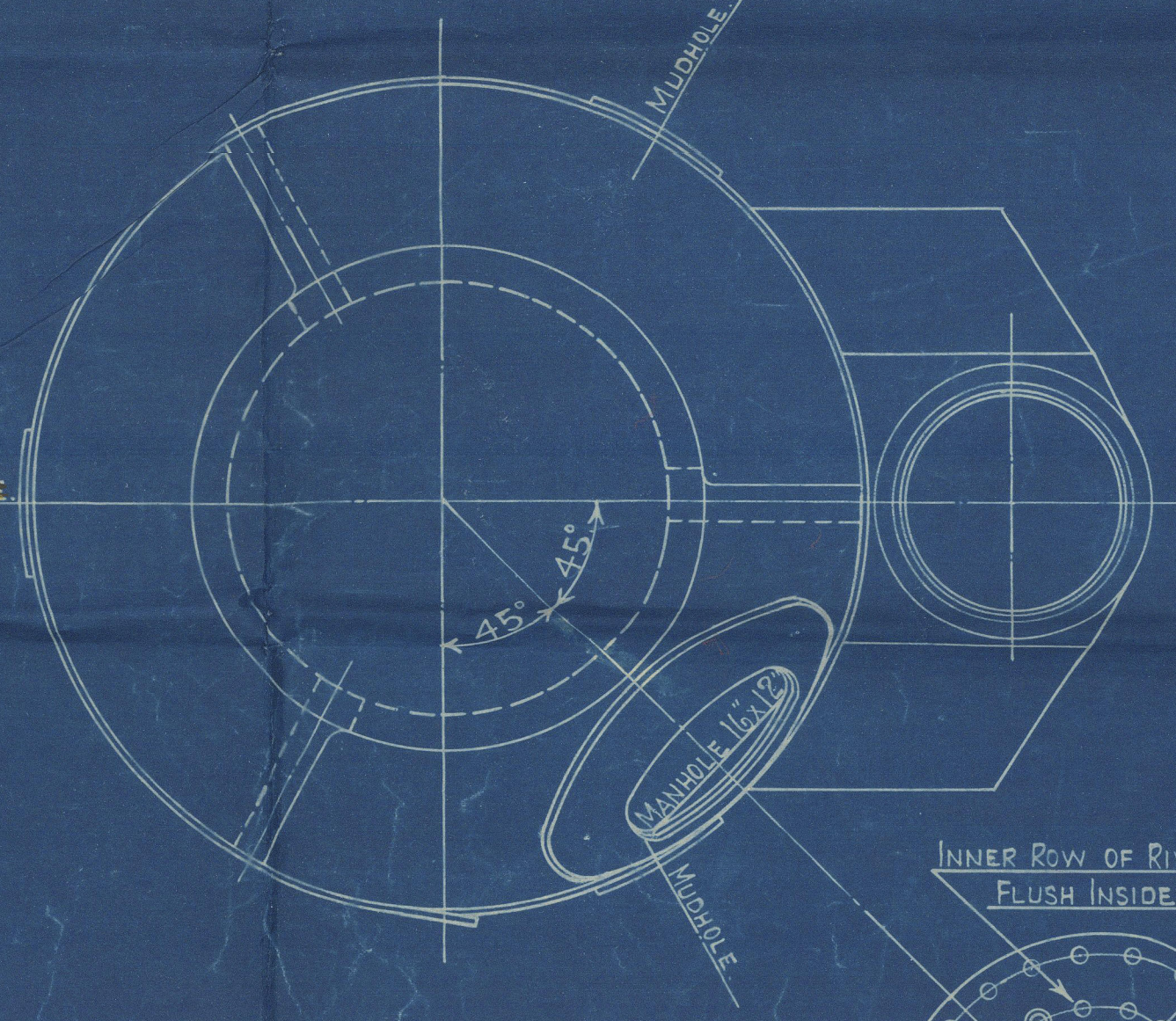
TENSILE TESTS:-	
PLATES NOT EXPOSED TO FLAME OR FLANGED.	28 TO 32 TONS.
PLATES EXPOSED TO FLAME OR FLANGED EXCEPT FOR CROWN.	24 TO 30 TONS.
FURNACE CROWN.	26 TO 29 TONS.



PLAN OF FURNACE.



PLAN OF SHELL CROWN JOINTS.



STANDARD.
SURVEY-LLOYDS.

DRAWING N^o 12316

COCHRAN & CO., ANNAN, L.A.

No. 8244

Drawing No. 12316

Similar to. 8918

100lbs per sq inch

Mark on Boiler:-

No 15277
Lloyds Test-
200 lbs
HP. 100 lbs
PMCA 7/5/20

GLASGOW REPORT No. 39953



© 2021

Lloyd's Register
Foundation

W1077-0032