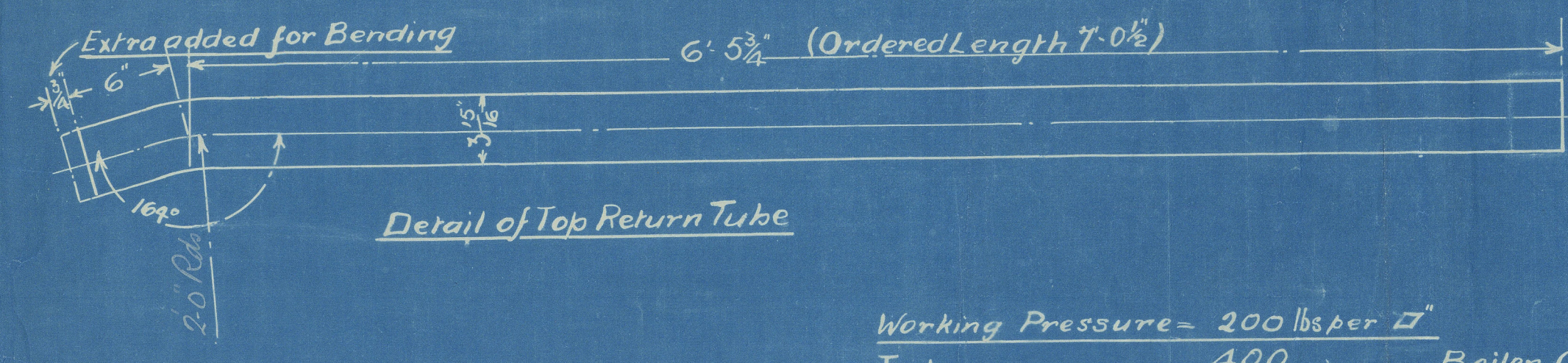
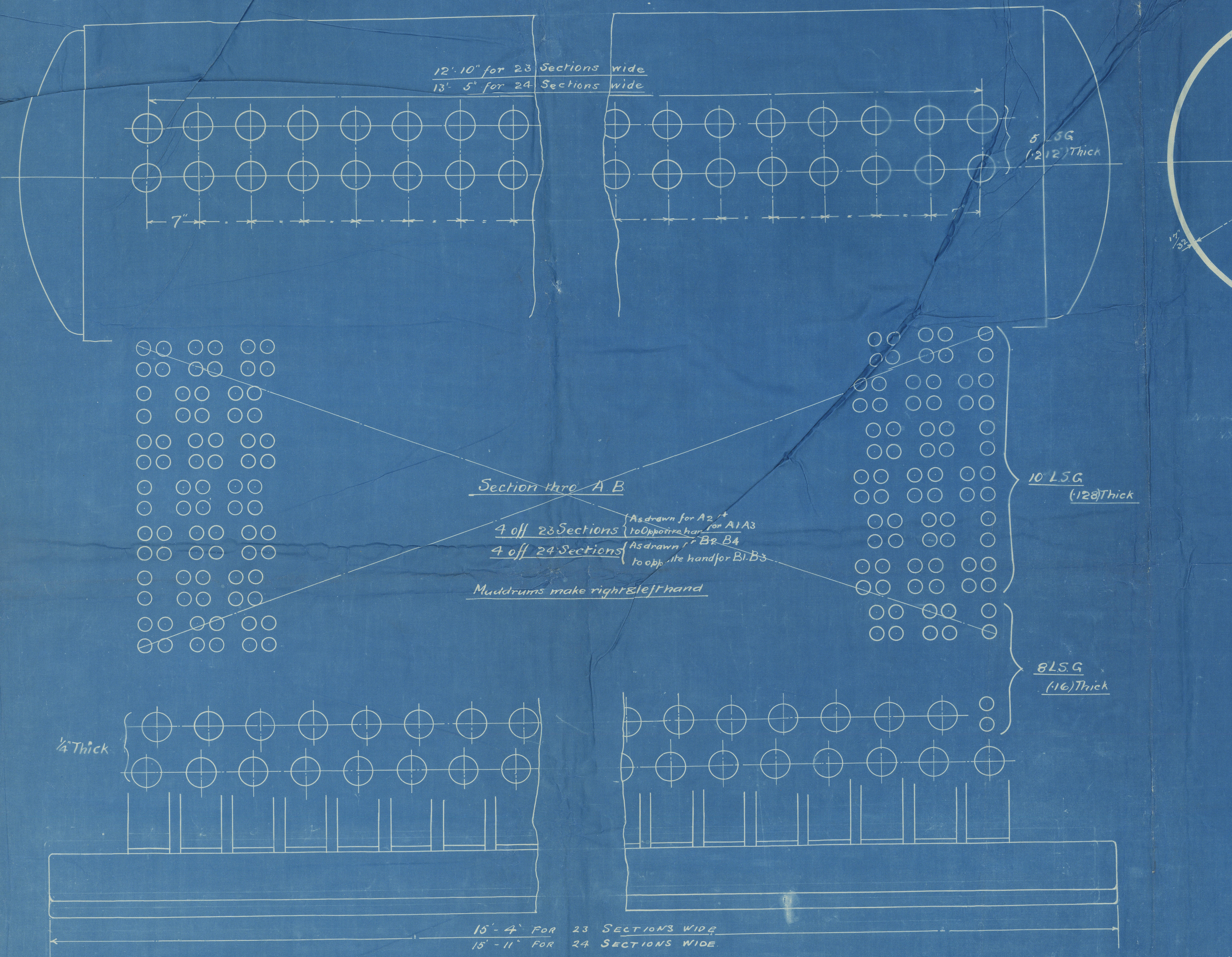


W1076-0166 1/2
From BABCOCK & WILCOX, Ltd., RENFREW,
FOR ENCLOSURE TO
Naval Register of Shipping
442 Clyde St. Glasgow

9/1/12

ALL TUBES AND NIPPLES IN THE BOILERS TO BE BELL MOUTHED.
BELL MOUTHED TO THE EXTENT INDICATED BELOW.
1 1/2" DIA TUBES; TILL THE DIA. AT END IS 1/8" LARGER THAN HOLE.
3 1/2" DIA TUBES; TILL THE DIA AT END IS 3/16" LARGER THAN HOLE.

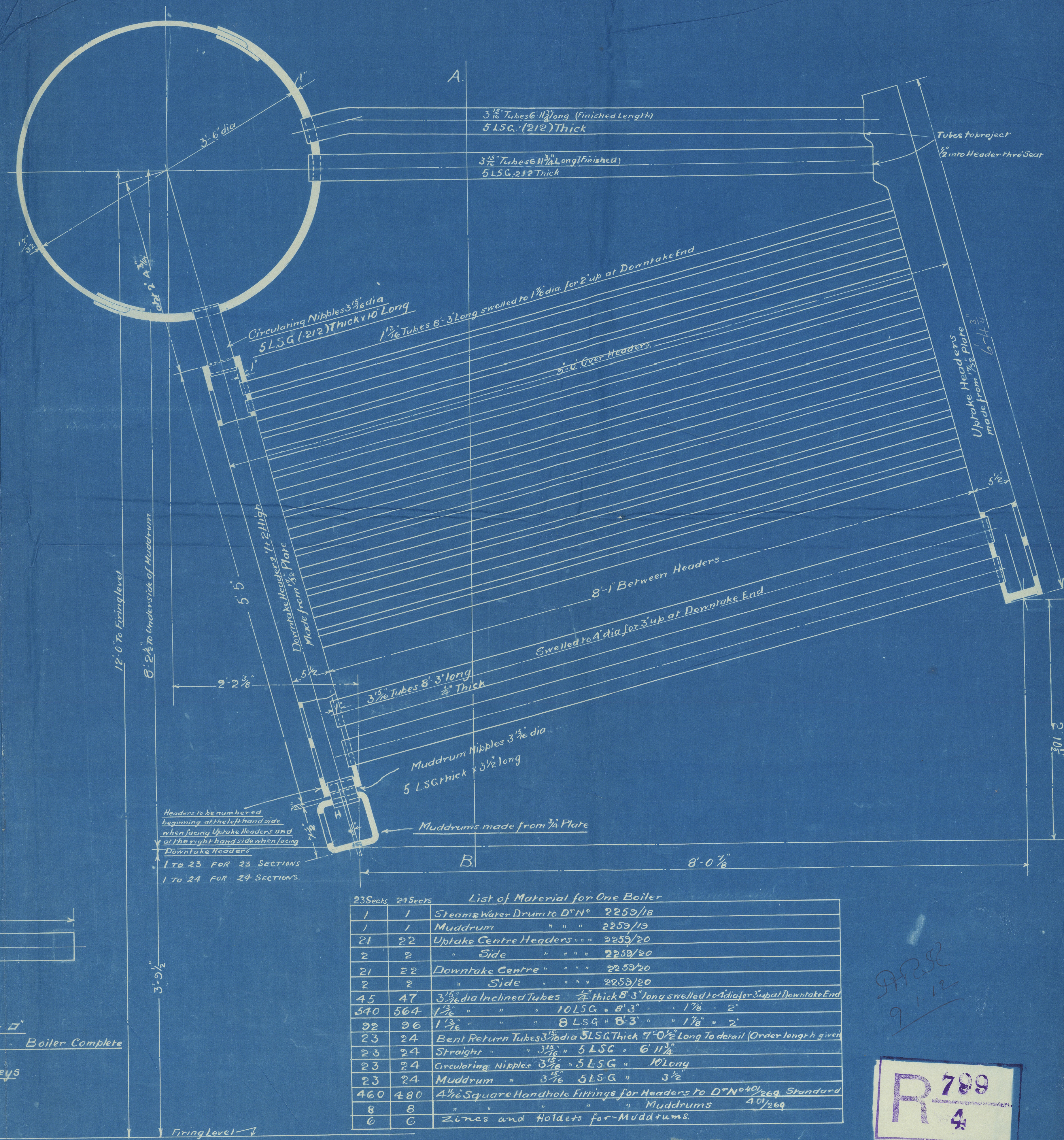
For Steam & Water Drum see D.N. 2259/18
" Muddrum see D.N. 2259/19
Headers see D.N. 2259/20
Handhole Fittings see D.N. 40/269



Test Pressure of Tubes = 1500 lbs per Square inch
" " Headers & Muddrum 600 lbs per Square inch
" " Boiler Complete = 400 lbs " " "

All Tubes of Hot Rolled Weldless Steel

Working Pressure = 200 lbs per sq. in.
Test " 400 " " Boiler Complete
To Board of Trade & Lloyd's Surveys



23 Sects	24 Sects	List of Material for One Boiler
1	1	Steam & Water Drum to D.N. 2259/18
1	1	Muddrum " " 2259/19
21	22	Uptake Centre Headers " " 2259/20
2	2	" Side " " 2259/20
21	22	Downtake Centre " " 2259/20
2	2	" Side " " 2259/20
45	47	3 1/2" dia Inclined Tubes 3/4" thick 8' 3" long swelled to 4" dia for 3" up at Downtake End
540	564	1 1/2" " " 10 LSG " 8' 3" " 1 1/8" " 2"
92	96	1 1/2" " " 8 LSG " 8' 3" " 1 1/8" " 2"
23	24	Bent Return Tubes 3 1/2" dia 5 LSG Thick 7' 0 1/2" Long To detail (Order length given)
23	24	Straight " " 3 1/2" " 5 LSG " 6' 11 1/2"
23	24	Circulating Nipples 3 1/2" " 5 LSG " 10 Long
23	24	Muddrum " 3 1/2" 5 LSG " 3 1/2"
460	480	4 1/2" Square Handhole Fittings for Headers to D.N. 40/269 Standard
8	8	" " " " Muddrums 40/269
6	6	Zincs and Holders for Muddrums

ARRANGEMENT OF PRESSURE PARTS

SCALE 1 1/2" = 1 FOOT

BABCOCK & WILCOX LTD
MARINE DEPT
FARRINGTONS LONDON E.C.

APR 21 1912

R 789
4

JOB NO. 196

D.N. NO. 2259/17

DATE 21-12-11

Foundation

W1076-0166 1/2

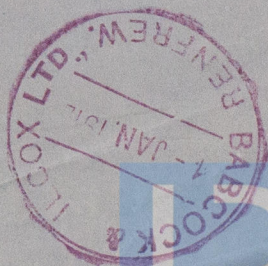
R7

From BABCOCK & WILCOX, Ltd., RENFREW,

FOR ENCLOSURE TO

*Messrs Lloyd's Register of Shipping
342 Argyle St Glasgow.*

9910-9E01M



© 2019

Lloyd's Register
Foundation