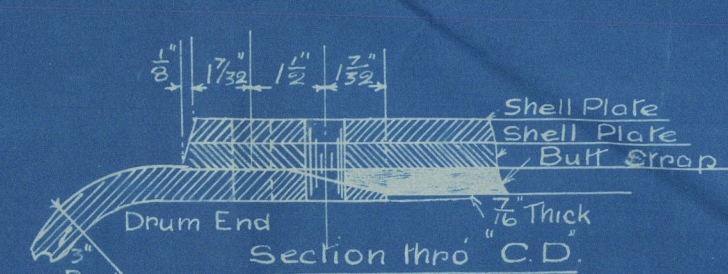
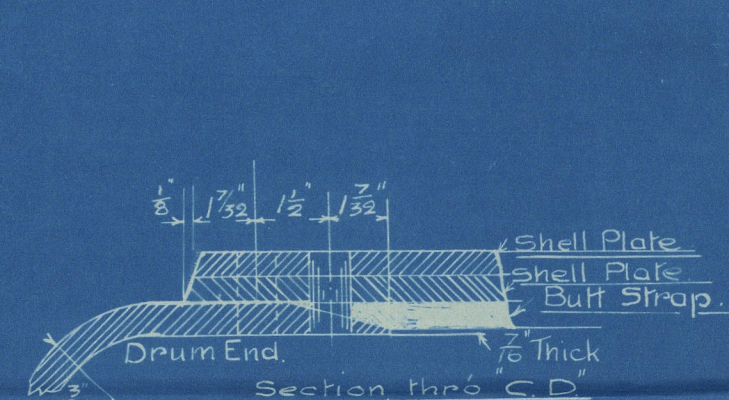
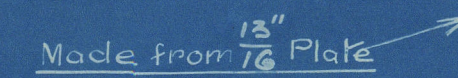
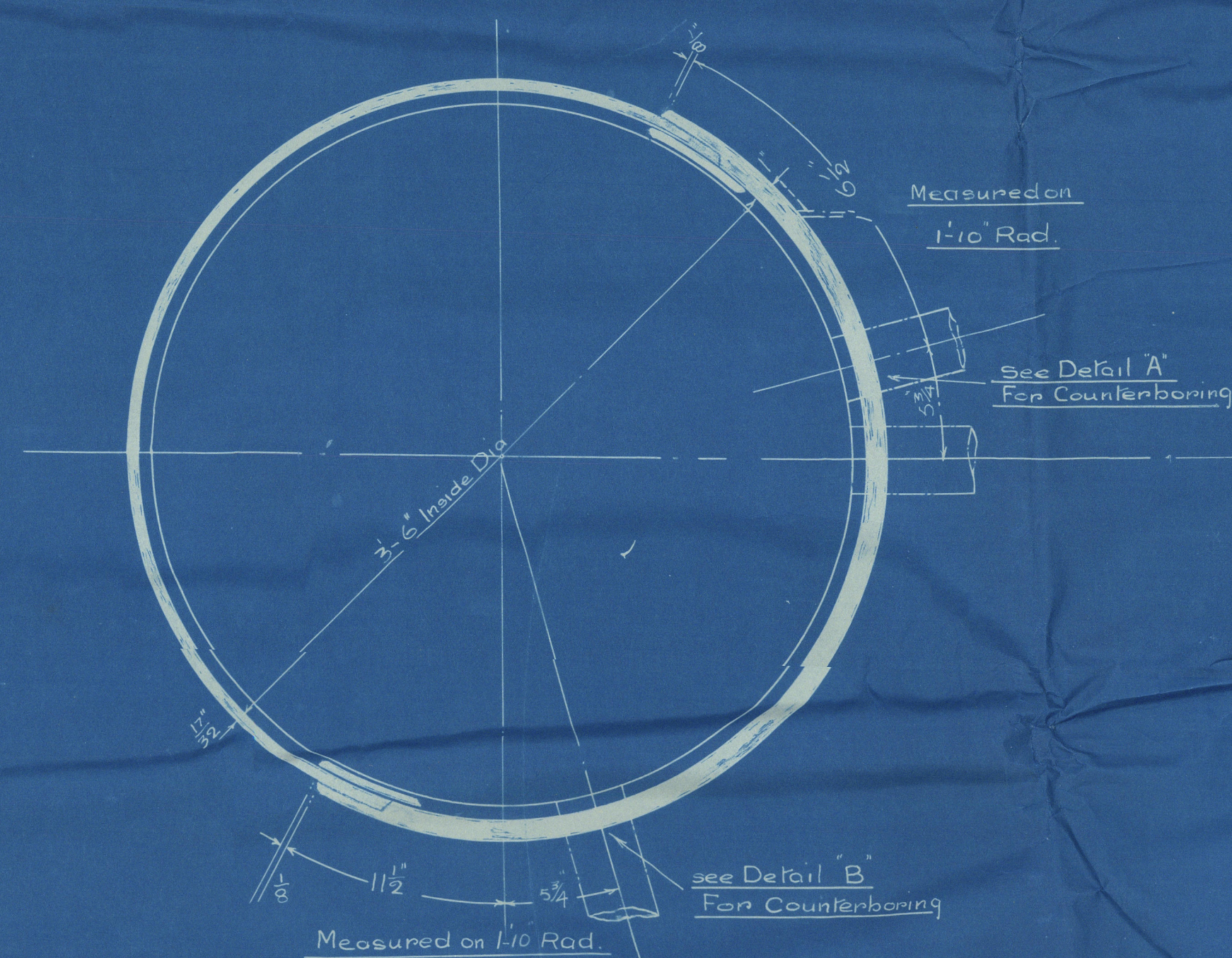


GROUP



For Detail and Position of
Mandoor and Compensating
see DR N-2259/21 Mounting Blocks.

List of Material.

4 Drums 23 sections wide.

4 Drums 24 sections wide.

BAIBCOCK & WILCOX LTD
MARINE DEPT
FARRINGTON ST LONDON EC

Working Pressure = 200 lbs per sq"

STEAM & WATER DRUM

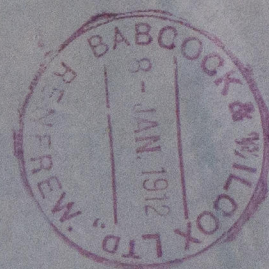
Scale $1\frac{1}{2}'' = 1 \text{ Foot}$.

R 799
6

JOB NO 196

IDB NO 2259/18

DATE 8-5-11-20



W1076-0163



© 2019

Lloyd's Register
Foundation