

28.12.11
6.1.12
15.1.12
2.2.12
21.2.12
12.3.12
28.3.12
3.5.12
23.5.12
5.11.12

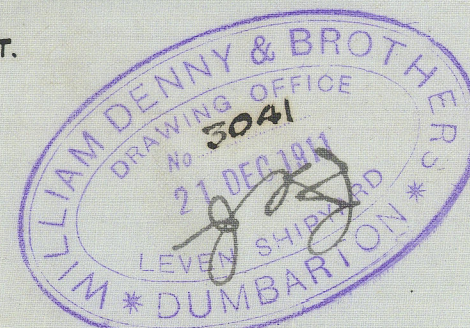
MIDSHIP SECTION TURBINE STEAMER N° 971

374'-0" B.P. x 52'-0" x 19'-6" M^{LD} TO UPPER DK.

TO CLASS 100 A.I. AWNING DECK WITH FREEBOARD

MOULDED DRAUGHT 16-75 FEET.

SCALE 1/4" = 1 FOOT.



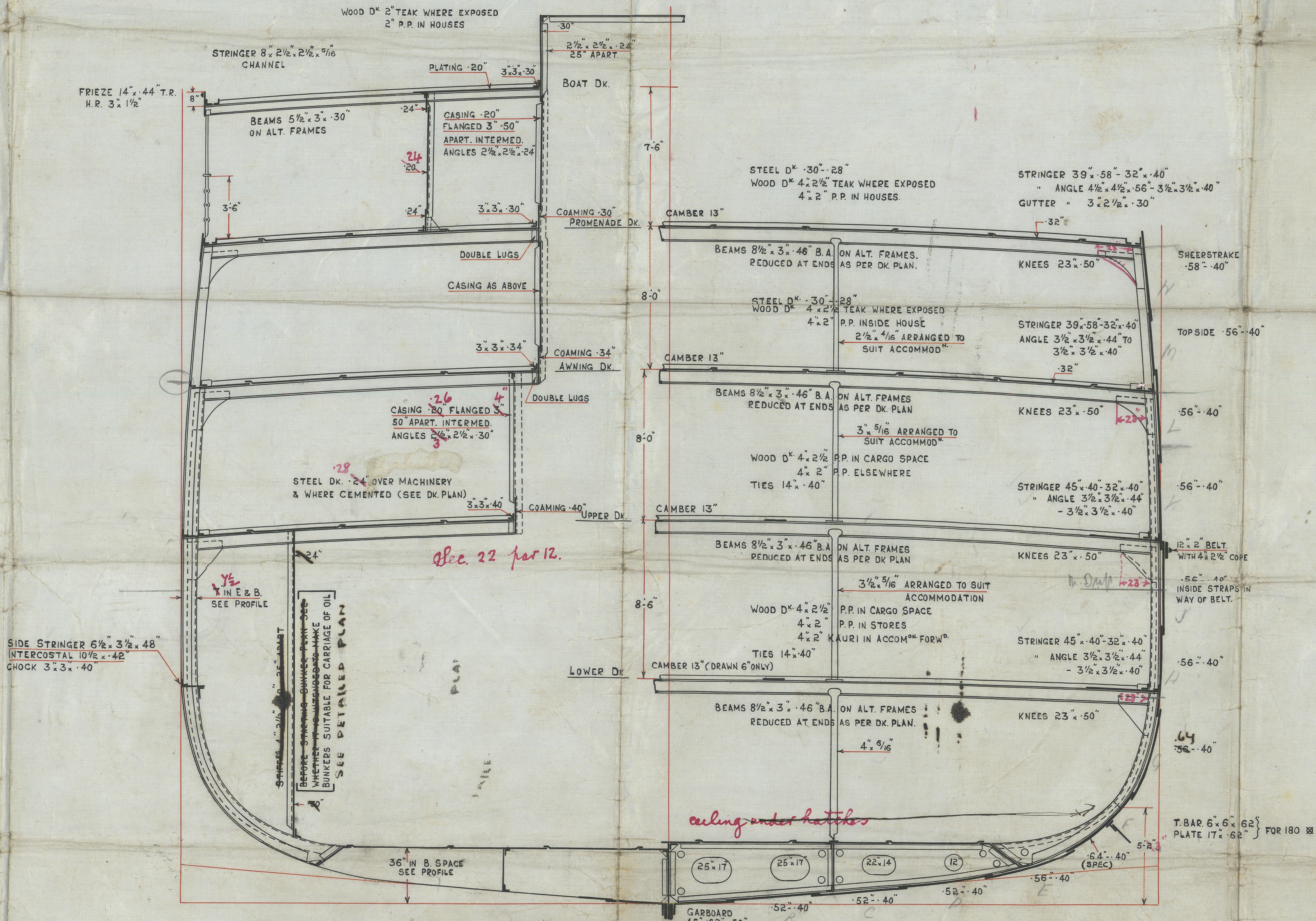
RIVETING

GARBOARD STRAKE.- STRAPPED & ^{triple} RIV^d FOR 1/2 L. TO DOUBLE AT ENDS
HEAVY BILGE STRAKE.- LAPPED & 4 PLE RIV^d FOR 1/2 L. TO DOUBLE AT ENDS
REMAINDER OF SHELL BUTTS 3 BLE FOR 1/2 L. TO DOUBLE AT ENDS EXCEPT STRAKE
Jⁿ WAY OF BELTING WHICH IS STRAPPED & 3 BLE RIV^d
PROMENADE DK. STRINGER.- LAPPED & 3 BLE RIV^d FOR 1/2 L. TO DOUBLE AT ENDS
" PLATING.- " & DOUBLE RIV^d FOR 1/2 L. SINGLE AT ENDS
AWNING DK. STRINGER.- LAPPED & 3 BLE FOR 1/2 L. TO DOUBLE AT ENDS.
" PLATING.- " & DOUBLE RIV^d FOR 1/2 L. SINGLE AT ENDS
OTHER STRINGERS.- LAPPED & DOUBLE ALL F&A.
UPPER DK. OVER MACHINERY. LAPPED & SINGLE RIV^d
INNER BOTTOM CENTRE STRAKE, & OF MARGIN PLATE LAPPED & 3 BLE RIV^d FOR 1/2 L.
DOUBLE AT ENDS
INNER BOTTOM PLATING.- DOUBLE RIV^d FOR 1/2 L. SINGLE AT ENDS
CENTRE GIRDER.- STRAPPED & DOUBLE RIV^d ALL F & A.

EDGES. SHELL.- DOUBLE ~~WHERE OVER 12" SINGLE ELSEWHERE~~
AWNING & PROMENADE STRINGERS.- DOUBLE ~~WHERE OVER 54" SINGLE~~
ALL OTHER DECK LANDINGS.- SINGLE ALL F & A.
INNER BOTTOM C^d STRAKE.- DOUBLE ~~WHERE OVER 12" SINGLE ELSEWHERE~~
REMAINDER OF INNER BOTTOM.- SINGLE ALL F & A.

INNER BOTTOM

CENTRE GIRDER.- 40" x 46" x 38" .56" IN B. SPACE
" TOP ANGLE.- 3 1/2" x 3 1/2" x 46" .44" .56" IN B. SPACE
" VERTICALS.- 3 3/4" x 36" DOUBLE FOR 1/2 L. .46" IN B. SPACE
FLOORS & SIDE GIRDER.- 36" x 34" .46" IN B. SPACE
" TOP & BOTTOM ANGLES.- 3 3/4" x 36"
" TOP ANGLE.- 46" IN B. SPACE
" VERTICALS.- 3 3/4" x 36" .46" IN B. SPACE
MARGIN PLATE.- 27" x 42" .46" IN B. SPACE 22 1/2" (ABOUT) x 50" x 10"
" SHELL ANGLE.- 3 1/2" x 3 1/2" x 42" .46"
" VERTICALS.- 3 3/4" x 36" DOUBLE IN B. SPACE
" FROM COLLISION 8H^o TO 1/4 L. FROM STEM
TANK TOP.- 38" x 34" .46" IN E. SPACE .54" IN B. SPACE
CENTRE STRAKE 40" x 46" x 38" .54" IN B. SPACE
GUSSETS, EVERY 4th FRAME IN E. EVERY 5th OUTSIDE.
Every "B."



NUMERALS

B + D = 71.5 = 1st N°
374
26741 2nd N°

EQUIPMENT

LONG ^d N°	26741
AWNING DK. 374 x 8 x .75	= 2244
PROM ^{DE} DK. 351 x 8 x .75	= 2106
D ^k HOUSES 109 x 7.5 x .50	= 409
CAPT ^{NS} HOUSE 34 x 7.5 x .50	= 128
	<u>31628</u>

2 BOWER ANCHORS 56 1/4 CWT^s EACH STOCKLESS
1 " " 47 1/2 " " " "
1 STREAM ANCHOR 15 " EX. STOCK
1 KEDGE 6 1/2 " " "
270 F^{ms} 2 3/16" STUD CHAIN CABLE
90 " 4 1/2" S.W. STREAM " "
120 " 4 1/2" " TOWLINE

2 @ 90 F^{ms} 7" MANILLA HAWSERS
" " 90 x 7" " WARPS
2 " 90 x 5" " HAWSERS } OWNERS REQ^d
2 " 30 x 3 1/2" F.S.W. SPRINGS

SCANTLINGS

FRAMES 5 1/2" x 3 1/2" x 36" ALL TO PROMENADE D^k CLEAR
OF OPEN END AFT WHERE THEY STOP AT.
AWNING D^k 25" APART.
FRAMES IN PEAKS 5 1/2" x 3 1/2" x 34" 24" APART (SEE PROFILE)
" E & B. AS PER PROFILE
REV. FRAMES 3 1/2" x 36" TO UPPER & AW^{NS} D^k ALTERNATELY
" IN PEAKS 3 1/2" x 34" " " " " FORM^d
ALL TO UPPER DECK AFT
ORDINARY FLOORS 28" x 46" x 38"
BULKHEADS GENERALLY AS PER PROFILE
STEM.- BELOW SHELF 9" x 3 3/8" ABOVE SHELF 8" x 2 1/2"
STERN POST.- CASTING
KEEL. SIDE BARS 9" x 1 1/2" IN WAY OF TANK 9" x 3 3/8" CLEAR

C.F.
28/12/11

Midship Section

Messrs W. Dennis & Barr

G. S. S. No. 971

s/s "Wahine"

GLASGOW REPORT No. 32646



© 2019

Lloyd's Register
Foundation

5710-9E01M