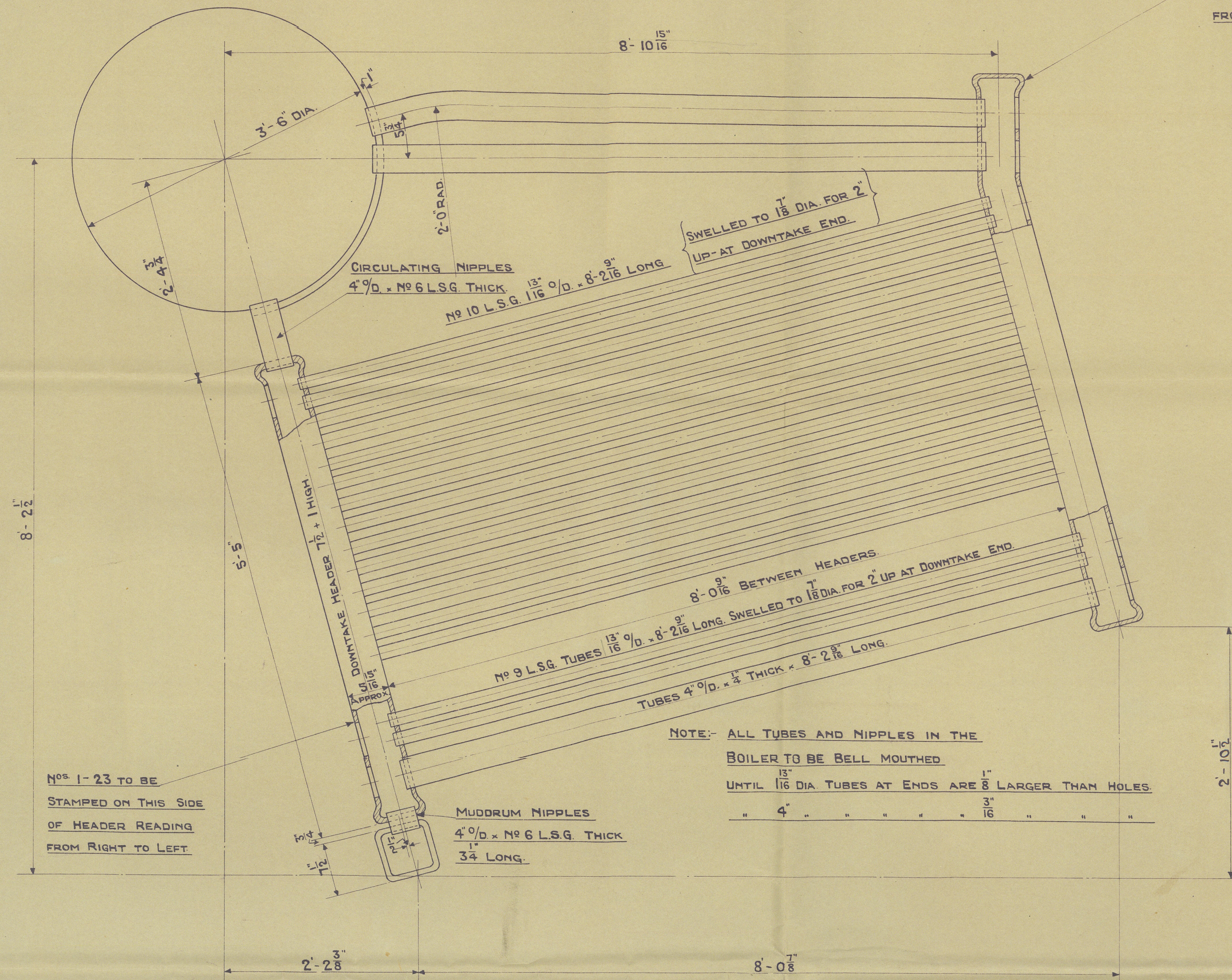


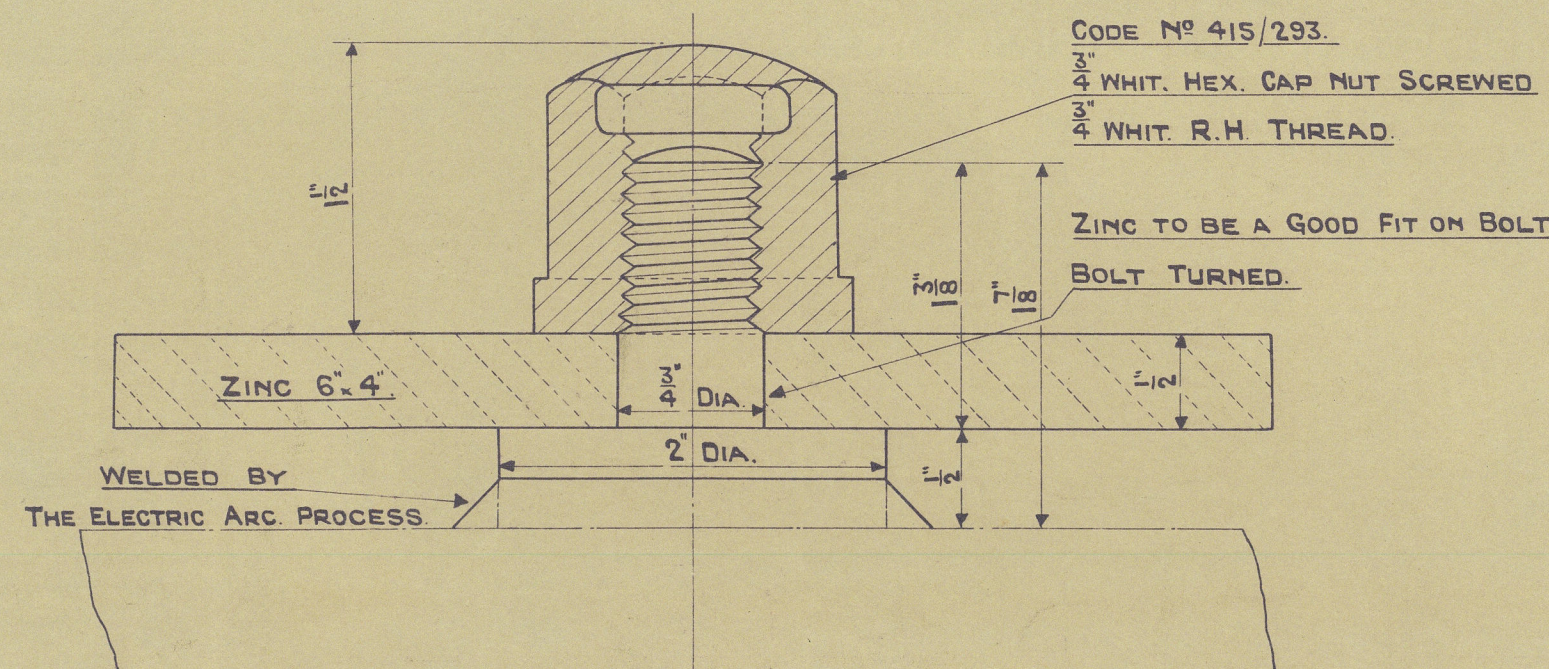
THE TOP RETURN TUBES ARE TO PROJECT BEYOND THE TUBE SEATS IN HEADERS 2 AND THRO' THE SEATS IN STEAM DRUM NOT LESS THAN 2 OR MORE THAN 4.
ANY EXCESS LENGTH TO BE CUT OFF WHEN BOILERS ARE ERECTED.

NOS 1-23 TO BE STAMPED ON THIS SIDE READING FROM LEFT TO RIGHT



NOTE: ALL TUBES AND NIPPLES IN THE BOILER TO BE BELL MOUTHED UNTIL 1 1/16 DIA TUBES AT ENDS ARE 3/4\"/>

MALEABLE CAST TO SK 10/3682A CODE NO 415/233. 3/4\"/>

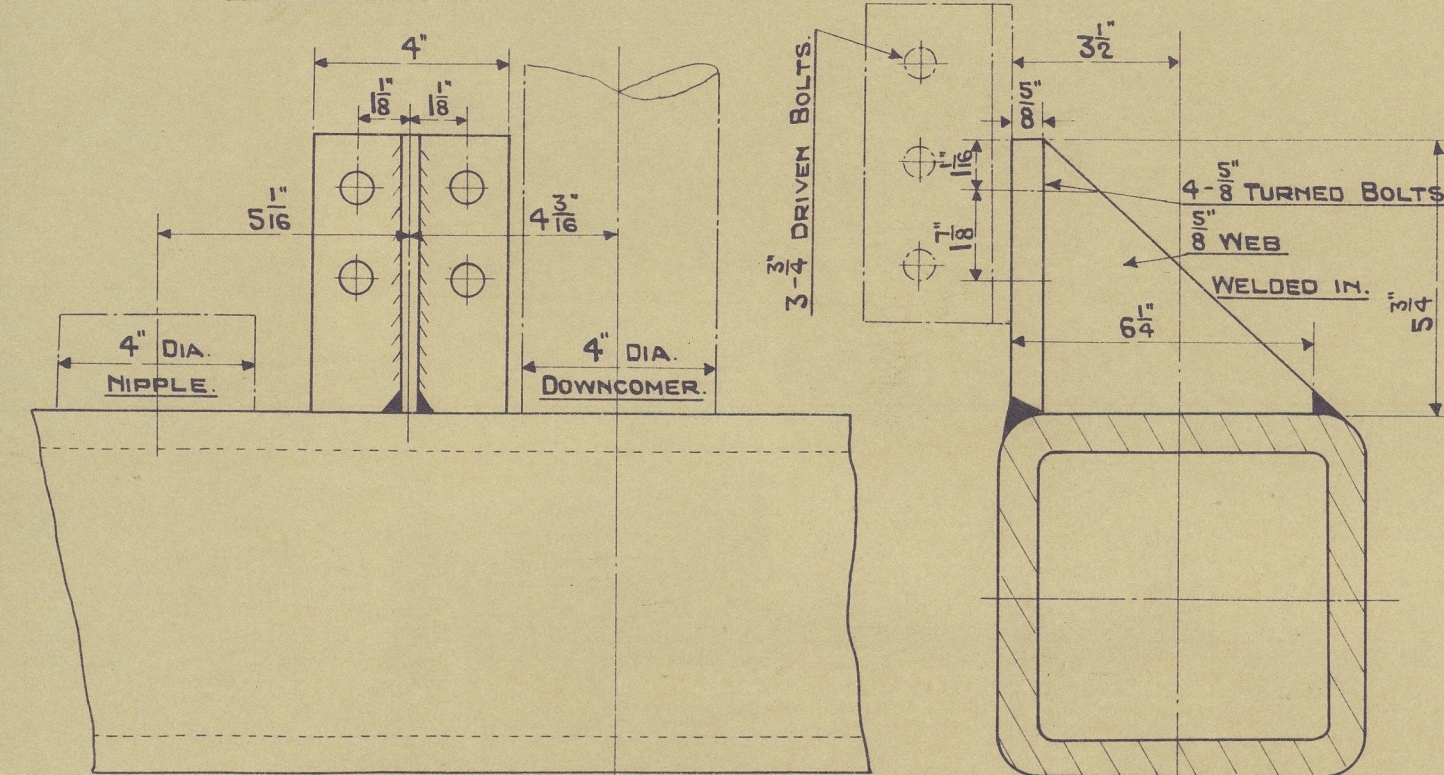


DETAIL OF ZINC HOLDERS IN MUDDRUM

FULL SIZE

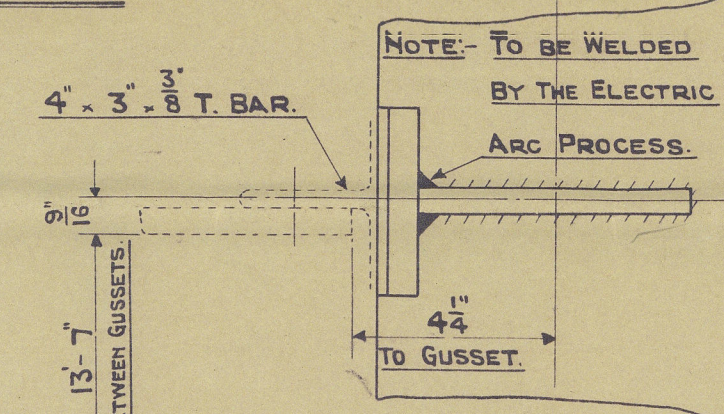
ARRANGEMENT OF PRESSURE PARTS SECTIONS WIDE

SCALE: 1\"/>



DETAIL OF MUDDRUM ANCHOR

SCALE: 3\"/>



DETAIL OF UPPER ROW OF TOP RETURN TUBES

FACING FOR 1 1/2\"/>

HOLES FOR DOWNCOMER BORED MAX 4 3/4\"/>

3 3/4\"/>

BARBOCK & WILCOX LTD
RENFREW

DETAIL OF MUDDRUM
SCALE: 1\"/>

3-OFF AS DRAWN

LIST OF MATERIAL REQUIRED FOR 23 WIDE BOILERS	
NO OFF	DESCRIPTION
3	MUDDRUM SOLID DRAWN WELDLESS STEEL TO DETAIL
42	UPTAKE CENTRE HEADERS TYPE 'B' TO DETAIL
42	DOWNTAKE CENTRE HEADERS TYPE 'E' TO DETAIL
4	UPTAKE SIDE HEADERS TYPE A&C TO DETAIL 2-OFF EACH
4	DOWNTAKE SIDE HEADERS TYPE D&F TO DETAIL 2-OFF EACH
46	INCLINED TUBES 4\"/>
180	1 1/16\"/>
1256	1 1/16\"/>
46	RETURN TUBES 4\"/>
46	CIRCULATING NIPPLES 4\"/>
46	MUDDRUM 4\"/>
4	DOWNCOMER TUBES 4\"/>
920	1 1/16\"/>
24	4 1/16\"/>
6	3 3/4\"/>
46	RETURN TUBES 4\"/>
18	ZINCS & HOLDERS TO DETAIL
6	ANCHOR BRACKETS (WELDED TO MUDDRUM)
6	4\"/>

NOTE: ALL TUBES TO BE HOT FINISHED SEAMLESS STEEL

FACING 5 1/8\"/>

BOLTS SCREWED THRO' MUDDRUM FROM INSIDE FOR 1 1/2\"/>

HEADERS

MINIMUM THICKNESS AT TUBE HOLES 1 1/16\"/>

ENDS BORED MAX 4 3/4\"/>

ENDS BORED MAX 4 3/4\"/>

ENDS BORED MAX 4 3/4\"/>

ENDS BORED MAX 4 3/4\"/>

ENDS BORED MAX 4 3/4\"/>

ENDS BORED MAX 4 3/4\"/>

ENDS BORED MAX 4 3/4\"/>

ENDS BORED MAX 4 3/4\"/>

ENDS BORED MAX 4 3/4\"/>

ENDS BORED MAX 4 3/4\"/>

ENDS BORED MAX 4 3/4\"/>

ENDS BORED MAX 4 3/4\"/>

ENDS BORED MAX 4 3/4\"/>

ENDS BORED MAX 4 3/4\"/>

ENDS BORED MAX 4 3/4\"/>

ENDS BORED MAX 4 3/4\"/>

ENDS BORED MAX 4 3/4\"/>

DOWNTAKE HEADERS

UPTAKE HEADERS

DETAIL OF HEADERS

SEAMLESS MADE FROM WELDLESS STEEL BLANKS

SCALE: 1\"/>

D	
24	TUBE HOLES MAX 1 1/16\"/>
1	TUBE HOLE MIN 1 1/16\"/>
1	NIPPLE HOLES MIN 4 3/4\"/>
9	4 1/16\"/>

E	
32	TUBE HOLES MAX 1 1/16\"/>
1	TUBE HOLE MIN 1 1/16\"/>
2	NIPPLE HOLES MIN 4 3/4\"/>
9	4 1/16\"/>

A	
22	TUBE HOLES MAX 1 1/16\"/>
1	TUBE HOLE MIN 1 1/16\"/>
2	RETURN TUBE HOLES MIN 4 3/4\"/>
11	4 1/16\"/>

B	
32	TUBE HOLES MAX 1 1/16\"/>
1	TUBE HOLE MIN 1 1/16\"/>
2	RETURN TUBE HOLES MIN 4 3/4\"/>
11	4 1/16\"/>

F	
22	TUBE HOLES MAX 1 1/16\"/>
1	TUBE HOLE MIN 1 1/16\"/>
2	NIPPLE HOLES MIN 4 3/4\"/>
9	4 1/16\"/>

C	
24	TUBE HOLES MAX 1 1/16\"/>
1	TUBE HOLE MIN 1 1/16\"/>
2	RETURN TUBE HOLES MIN 4 3/4\"/>
11	4 1/16\"/>

ARRG^T OF PRESSURE PARTS & DETAILS OF HEADERS & MUDDRUM ETC.

SCALES AS MARKED

SECTION THRO' 'AB'

HOLE SCREWED 1\"/>

3 3/4\"/>

ANCHOR BRACKET WELDED TO MUDDRUM

This Design is the property of Babcock & Wilcox Limited and is only allowed to be used by express permission and license from Babcock & Wilcox Limited

M. 12225

DRG. 2259/109

DATE 4-6-35 Registered Foundation 10076-0139