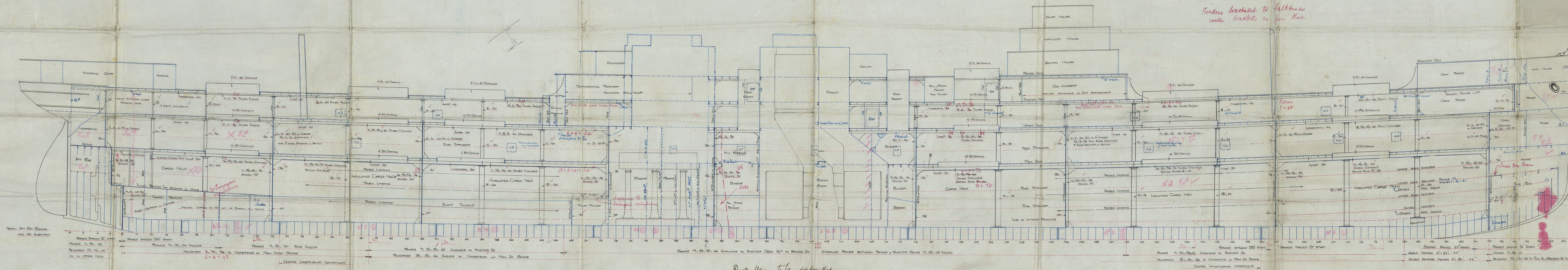


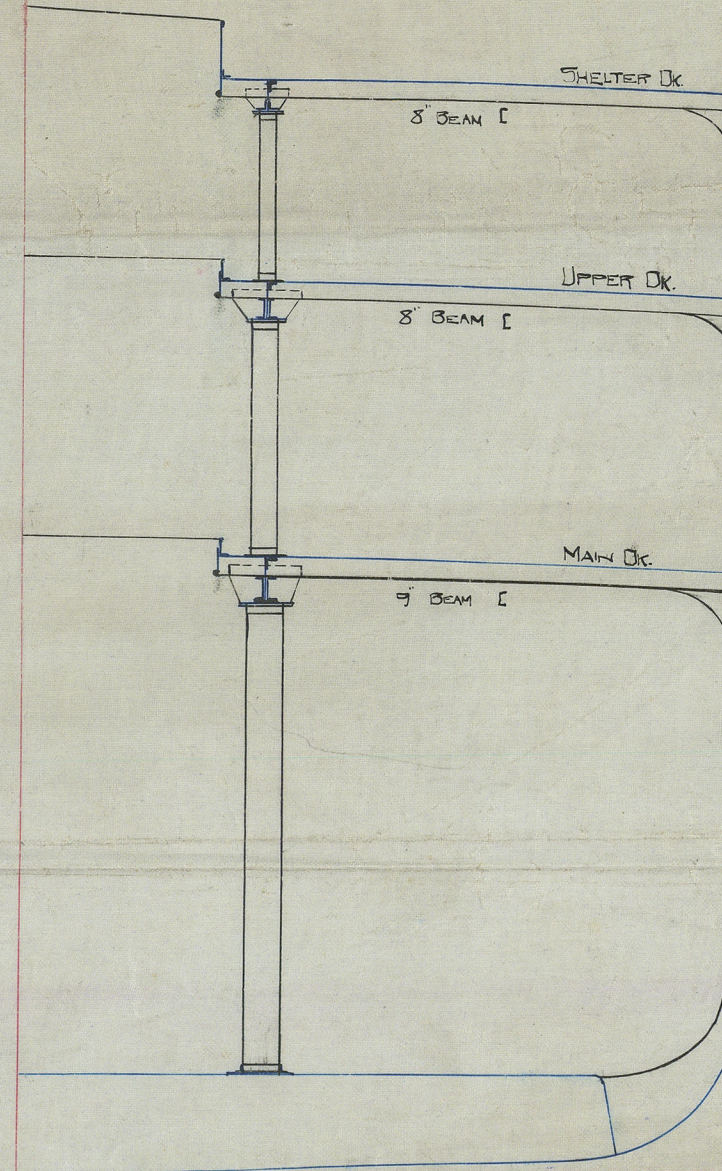
8.10.10  
2.11.10  
18.11.10  
30.3.11

— N° 309 T.S.S. —  
— LONGITUDINAL SECTION OF A TWIN SCREW STEAMER —  
— DIMENSIONS 477'0" x 62'9" x 34'4" to SHUTTER DECK —  
— To class 100 A1 LLOYD SHUTTER DECK —  
— SCALE 1/8" = 1'00"

477  
119  
Girders bracketed to bulkheads  
with brackets as per Rule.



Deck plans to be submitted.



Half section in way of hold

C.B.  
8.10.10





Profil

Messrs. Workman Clark

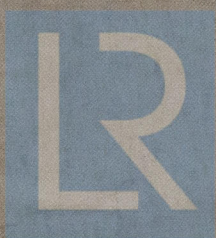
No 309

St. Waimana

Del 7016

now

Empire Waimana



© 2019

Lloyd's Register  
Foundation

W1076-0019