

10: 2: 05

Act. Ges. Weser Bremen

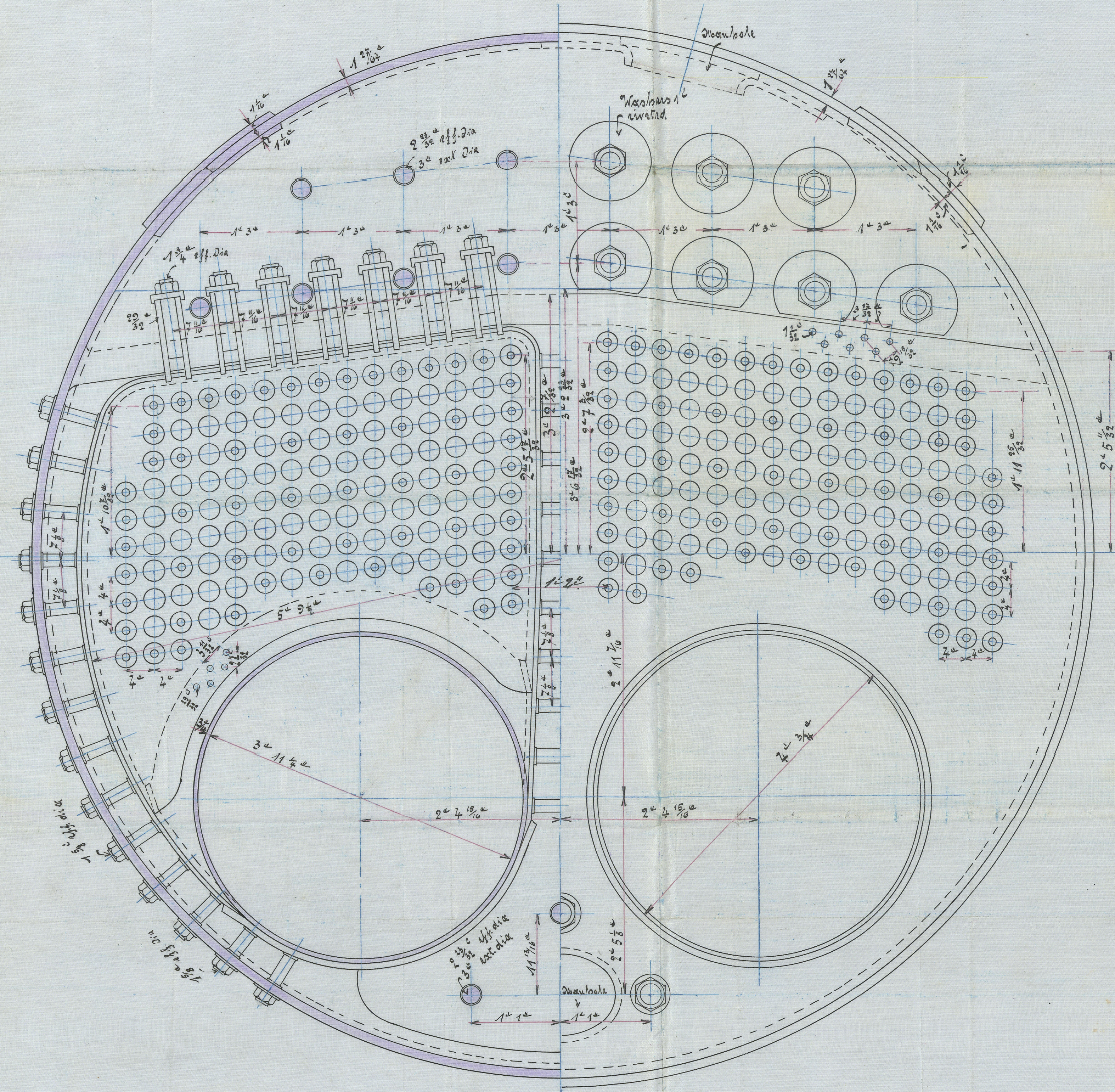
Boiler No: 832 for ship No: 148.

Boiler No: 843 for ship No: 149.

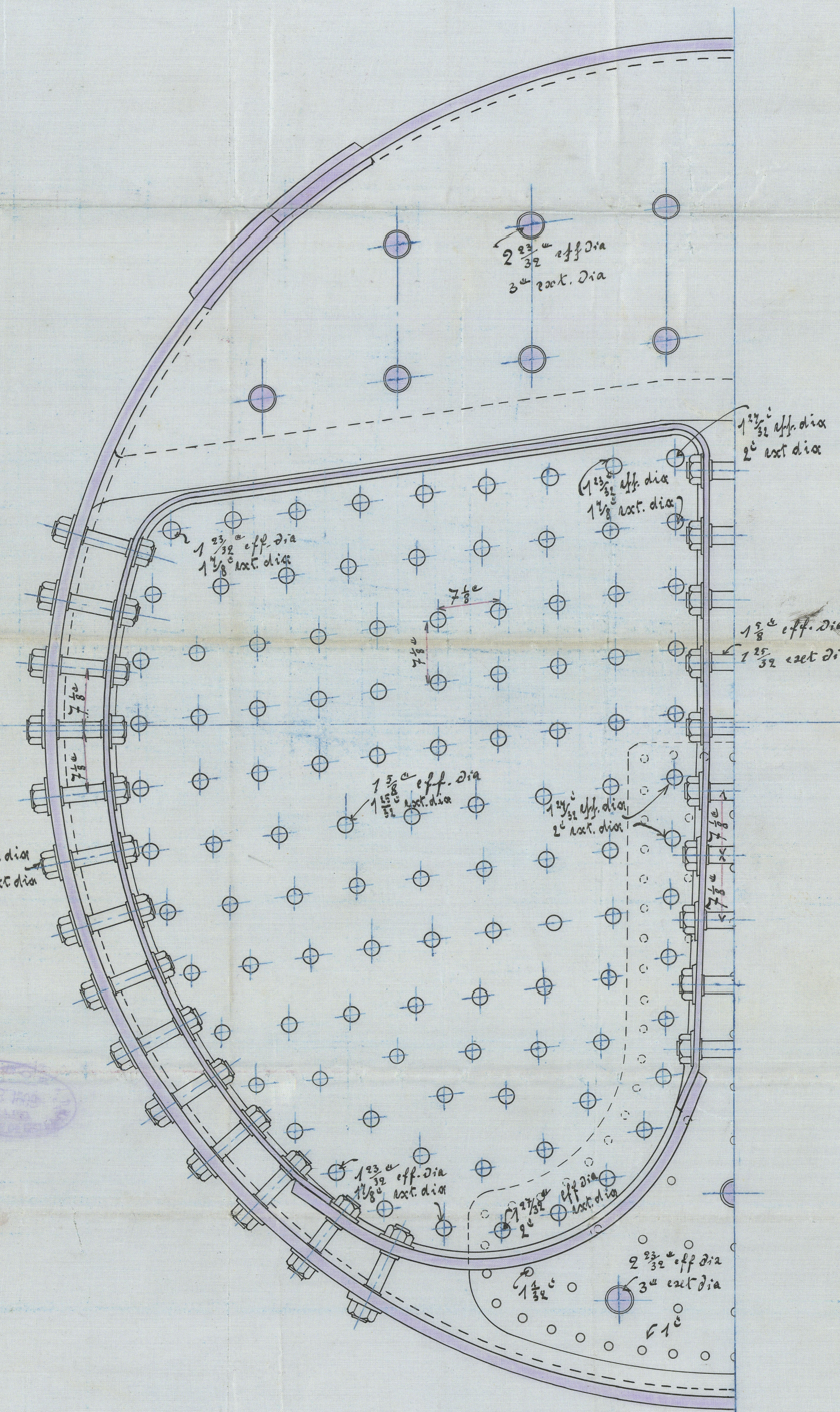
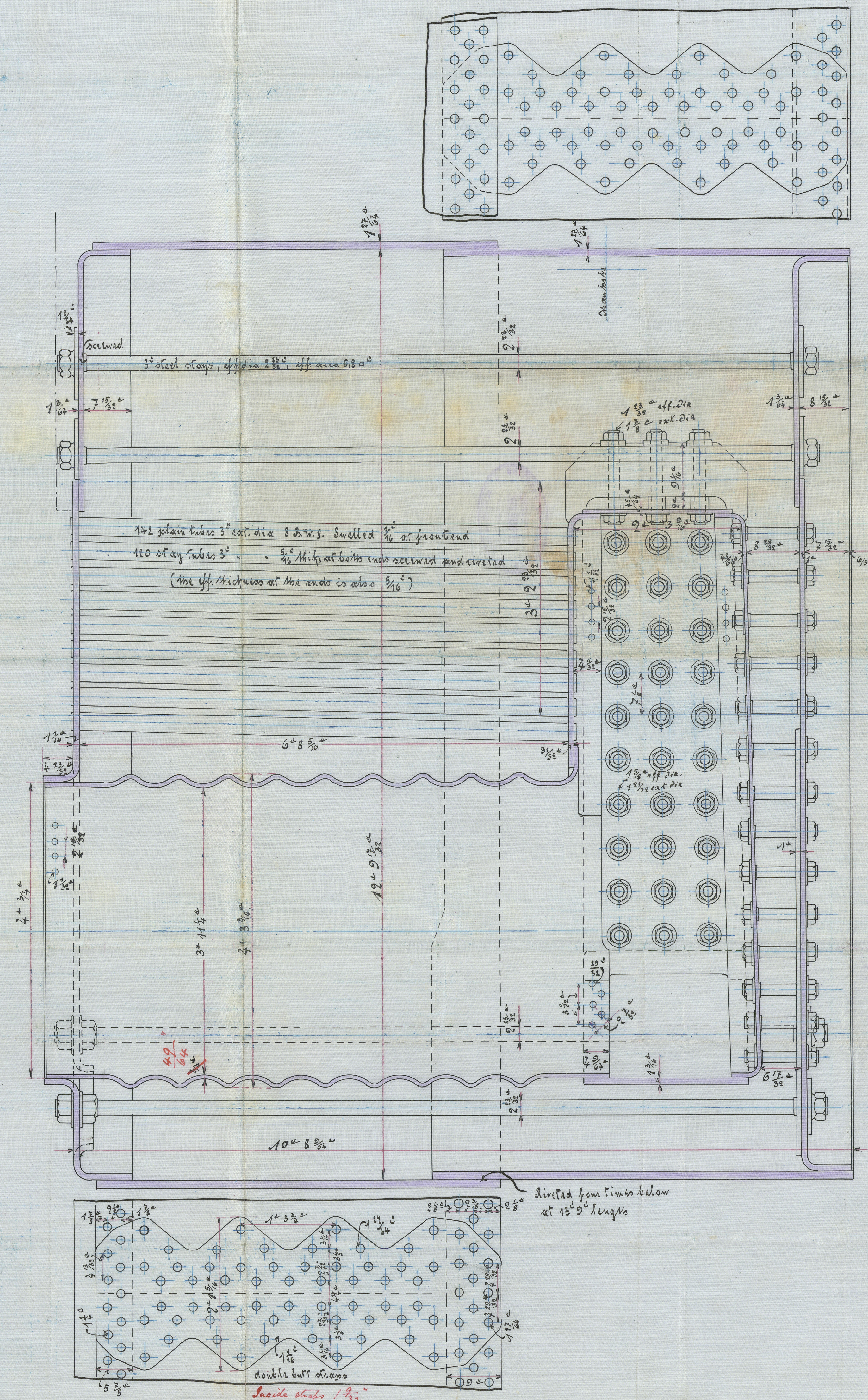
Total heating surface = 16146 m²
 Total plate area = 50.6 m²
 Concessional pressure = 15 kg/cm²
 = 220.5 kg/cm²

Working pressure = 15 kg/cm² = 213.55 kg/cm²
 Working hydraulic pressure = 20 kg/cm²
 = 291.53 kg/cm²

Scale 1:10.



Cylindrical shell and butt stays - steel of tensile strength of 26.4 - 29.8 tons per m²
 All other plates " " " " 24.2 - 26.4 " " "
 Stays " " " " 21.9 - 26.4 " " "
 Rivets - iron of special quality of tensile strength not less as 23.5 " " "



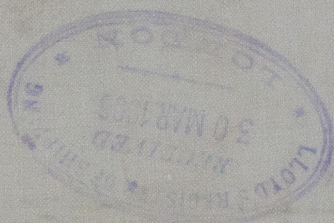
1 1/2" steel stays, eff. dia 1 1/2", eff. area 1.36 m²
 1 1/2" " " " 1 1/2" " " 1.05 m²
 2" " " " 2" " " 2.68 m²

10: 2: 05

Lothringen Bhn 1140.
Boiler.

S.S. Thurnigen.
Bhn. 1175

"SALUTA"



RETAIN



© 2020

Lloyd's Register
Foundation

W1070-0185