

Scale $\frac{1}{8}" = 1 \text{ Foot.}$

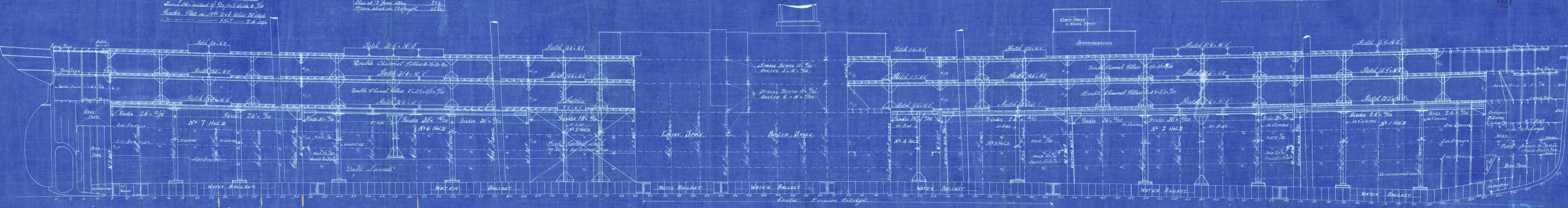
To class 100 A Turning back Rule.

Length on Load Line	481-
Moulded depth to Main deck	34'10"
Estimated Tonnage (Gross/Unadjusted)	33
Shear Forward	10 1/4"
Shear Aft	50"
Mean Shear over Total Length	77"
Shear at 1/8 from stem	57 1/2"
Shear at 1/8 from stern	23 1/2"
Mean shear in 1/8 Length	42 1/2"

Note: Waterlight $2\frac{1}{2}$ " in holes $4\frac{1}{2}$ " in
Stucco Lbs instead of $4\frac{1}{2}$ for depth to $4\frac{1}{2}$
Finder Plate on Nos 2+6 holds $30\frac{1}{2}$ " deep
 ~ ~ ~ ~ ~ $13\frac{1}{2}$ " ~ ~ ~ ~ ~ $24\frac{1}{2}$ " deep

Note: Waterlight Br^{ds} 7/8 in Sides, 7/8 in, Green Stk.
instead of 1/2 for 1/2 Depth to 1/2
Order Plate Grams in N^o 2 & 6 Hold 30 days
~~~~~ " ~~~~ 1.37 ~~~~ 24 ~~~~

Charles Connell & Co  
14/12/48  
Gus



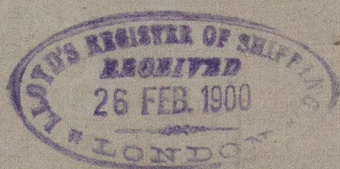
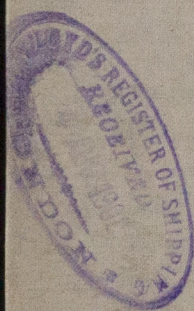


C. Connell & Co's

No. 252 & 1/2 "Custodian"

n.h. "N.T. Nielsen - Filonzo"

Glasgow Report No. 17720



W157-0206



© 2020

Lloyd's Register  
Foundation