

T.S. 500-

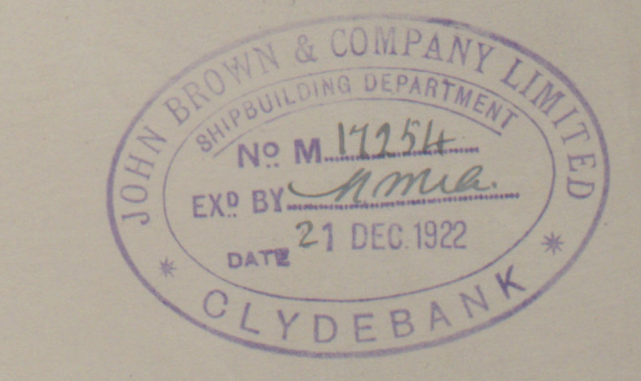
630'-0" B.P. + 75'-0" M<sup>2</sup> + 47'-0" NLP

LOWER OROP DECKS G & H

SCALE 1/2" = 1' FT.

NOTE: L<sup>2</sup>

WHEN DECK PLATED AT END AND LESS THAN  
KILE WIDTH A 1/2" STRENGTH THE ADJACENT SPACE  
TO BE INCREASED IN PROPORTION



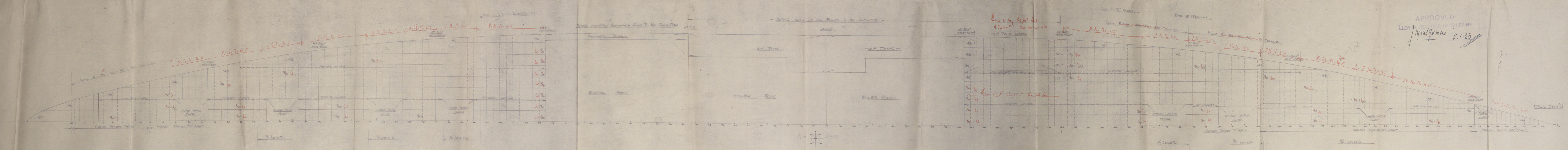
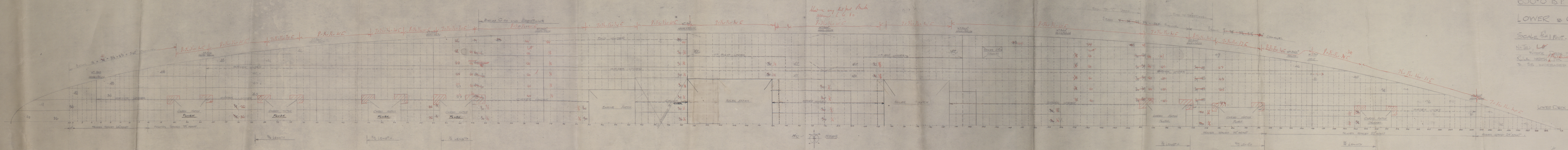
LOWER DECK G

RYETING

Edges of 5'-0" x 1'-0" plates shall be strengthened by double rivets  
running in the direction of the plates. The rivets shall be spaced at 12" on center.  
NOTE: LAPS OF STEEL PLATES NOT TO EXCEED 12" ON CENTER. RIVETS  
TO BE SPACED AT 12" ON CENTER. TO BE DOUBLE RIVETED.  
TO BE SPACED AT 12" ON CENTER. TO BE DOUBLE RIVETED.  
TO BE SPACED AT 12" ON CENTER. TO BE DOUBLE RIVETED.

APPROVED  
LLOYD'S REGISTER OF SHIPPING  
J. H. G. 6.1.23

OROP DECK





G & H. DECKS

- T. S. S. 500 -

John Brown & Co

GLASGOW REPORT No. 44328

J. D. D. "Oronsay"

W107-0018



© 2020

Lloyd's Register  
Foundation