

S. S. ~~Electrix~~ Magie

STEEL S.S. 310'-0" x 38'-0" x 17'-9" (KEEL TO BEAMS)

TO CLASS 100 A1. AT LLOYDS TWO DR. RUE
POOP BRIDGE & F. CASTLE

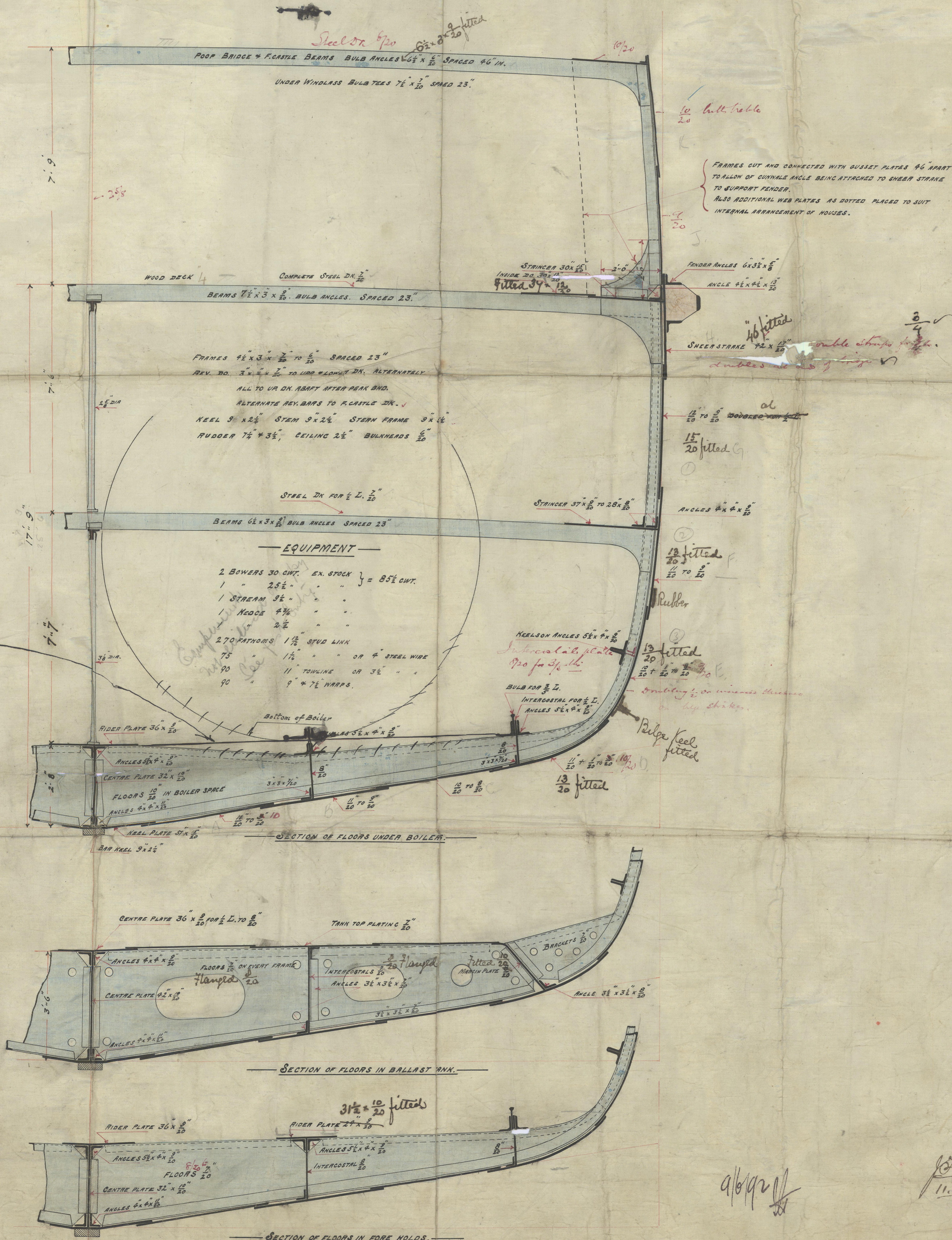
Scale $\frac{1}{2}$ inch = one foot

NUMERALS.

17.75 + 13.00 + 31.84 + ~~18~~ = 68.81 = FRAMING.
68.81 x 308.75 = 21,245.08 = PLATING.
21,245 + 1891 = 23,136 = EQUIPMENT

- PROPORTIONS

DEPTH TO LENGTH (UPPER DK.) = 17.3
BREADTH TO LENGTH = 8.12



new floors fitted as
shown 7.24.

New Boilers in Cambria.
Double tenon bar

9/6/92

11.6.92

Magic
310 ft long
Electric
midship

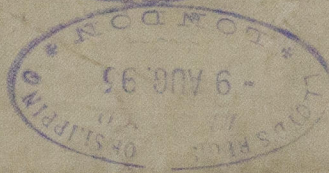
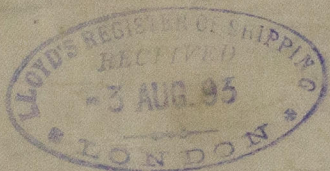


RETAIN

Kellatney

Bel. Freeboard Rpt

No. 4272



© 2020

Lloyd's Register
Foundation