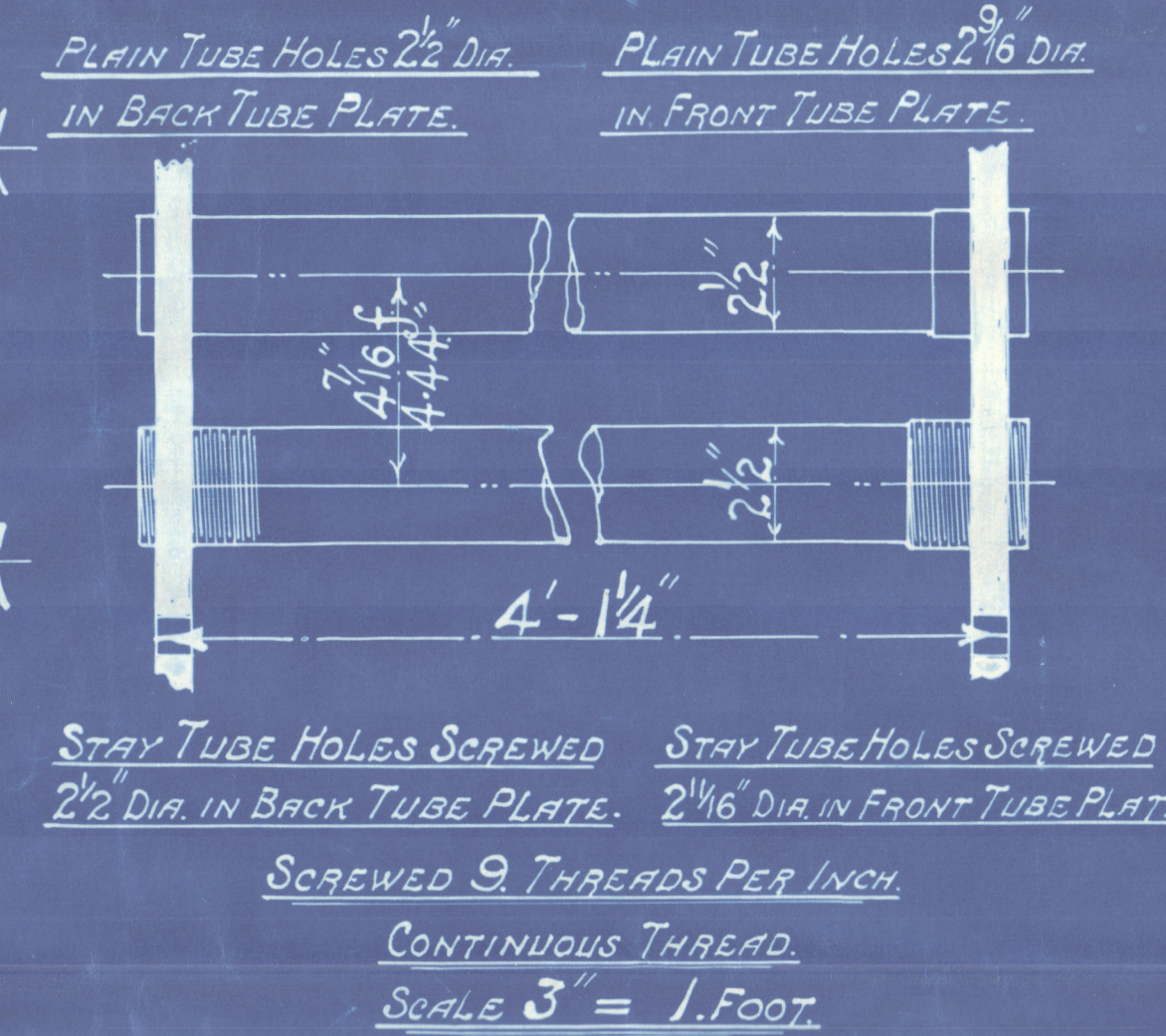


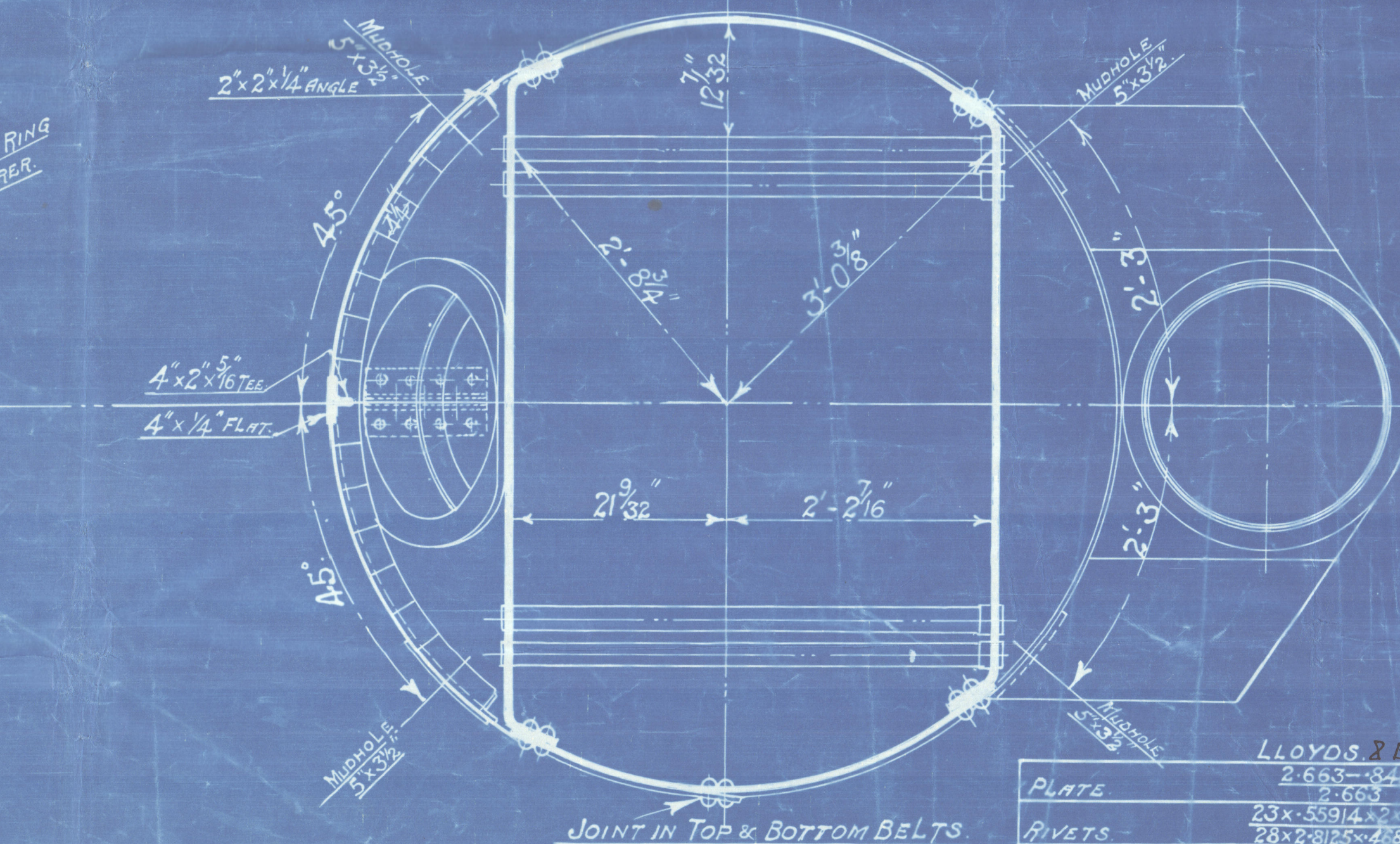
### HORIZONTAL FLUE TUBES.



**COCHRAN & CO ANNAN LTD**  
**ENGINEERS & BOILERMAKERS**  
**ANNAN SCOTLAND.**

HEATING SURFACE.	
TUBES.....	373 Sq. Ft.
PLATE.....	77 Sq. Ft.
TOTAL.....	450 Sq. Ft.
GRATE AREA.....	225 Sq. Ft.

MANHOLE & MUDHOLE DOORS TO HAVE STUDS SCREWED  
THROUGH PLATES & FITTED WITH NUTS INSIDE  
MANDOOR MADE BY CHAS. McNEIL L<sup>TD</sup> GLASGOW.  
MUDDOORS MADE BY SMETHWICK STAMPING CO L<sup>TD</sup> SMETHWICK.



	LLOYD'S BOARD OF TRADE	
PLATE	$\frac{26.63 \times 34.75}{2.60}$	$\times 100 = 68.2\%$
RIVETS	$\frac{23 \times .5591 \times 2.1}{28 \times .2125 \times 4.75}$	$= 69.75\%$
FRONT TUBE PLATE	$\frac{4.44 \times 2.65}{4.44}$	$\times 100 = 40.9\%$
BACK TUBE PLATE	$\frac{4.44 \times 2.5}{4.44}$	$\times 100 = 43.75\%$
SHELL	$\frac{(15-2) \times 28 \times 68.2}{2.5 \times 78}$	$= 110 \text{ LBS}$
FRONT TUBE PLATE	$\frac{(26-2) \times 26 \times 40.9}{(23-2) \times 26 \times 43.75}$	$= 120.8 \text{ LBS}$
BACK TUBE PLATE	$\frac{2.5 \times 24 \times 43.75}{2.5}$	$= 126 \text{ LBS}$
FURNACE	$\frac{2.5 (6-1)}{2.5}$	$= 125 \text{ LBS}$
DOGS RING	$\frac{140 (27-1)}{78 (78-68)}$	$= 101 \text{ LBS}$

PATENT BOILER No. 10491  
6'-6" x 14'-8" x 450# x 100 Lbs.W.P.

SCALE :- 1 INCH TO 1 FOOT.  
SIEMENS MARTIN MILD STEEL PLATES

N.R.

PLATES NOT EXPOSED TO FLAME OR FLANGED.....28 TO 32 TONS  
PLATES EXPOSED TO FLAME OR FLANGED & RIVETS...26 TO 30 TONS.

DRAWING No.

© 2020  
15643  
Bryd's Register  
Foundation



COCHRAN & CO., ANNAN, LD.

Boiler No. 10491

Drawing No. 15643

W.P. 100 lbs.

GLASGOW REPORT No. 47044



© 2020

Lloyd's Register  
Foundation



Thos Barnard Ferguson  
SS N<sup>o</sup> - 264

Plan of Dempsey Boiler

W. P. 105<sup>th</sup>

S.S. "VYNER BROOKE"  
LTH. RPT. NO. 17329.

RETAIN



© 2020

Lloyd's Register  
Foundation

W1062-0038