

6/11/28

HEATING SURFACE	SQ. FEET
294 TUBES 3" EXT. DIA. X 8'-0" L.T.P.	1847
FURNACES	143
COMBUSTION CHAMBER TOP & SIDES	174
" BACKS	63
BACK TUBE PLATES	36
TOTAL	2213

WORKING PRESSURE 180 LBS./SQ. IN. } TO LLOYDS SURVEY  
TEST " 320 " /SQ. IN. }

OIL FUEL ONLY

**SHELL RIVETING**

DOUBLE BUTT STEAD JOINTS

SHELL PLATE 1/2" THK. UNDER BUTT STEAD 1" THK. OUTER BUTT STEAD 7/8" THK.

RIVET HOLES 1 1/8" DIA. MINIMUM PITCH 8.75"

PLATE SECTION 85.0% RIVET SECTION 88.7% W.P. = 181.7 LBS./SQ. IN.

TENSILE STRENGTH OF SHELL PLATES: 29-33 TONS/SQ. IN.

" FURNACES & COMBUSTION CHAMBER PLATES 26-30 TONS/SQ. IN.

" SHEETS 29-33 TONS/SQ. IN.

" END PLATES 26-30 TONS/SQ. IN.

" MANHOLE RING 26-30 TONS/SQ. IN.

" STEAM SPACE & MANHOLE STAYS 26-30 TONS/SQ. IN.

" COMBUSTION CHAMBER STAYS 26-30 TONS/SQ. IN.

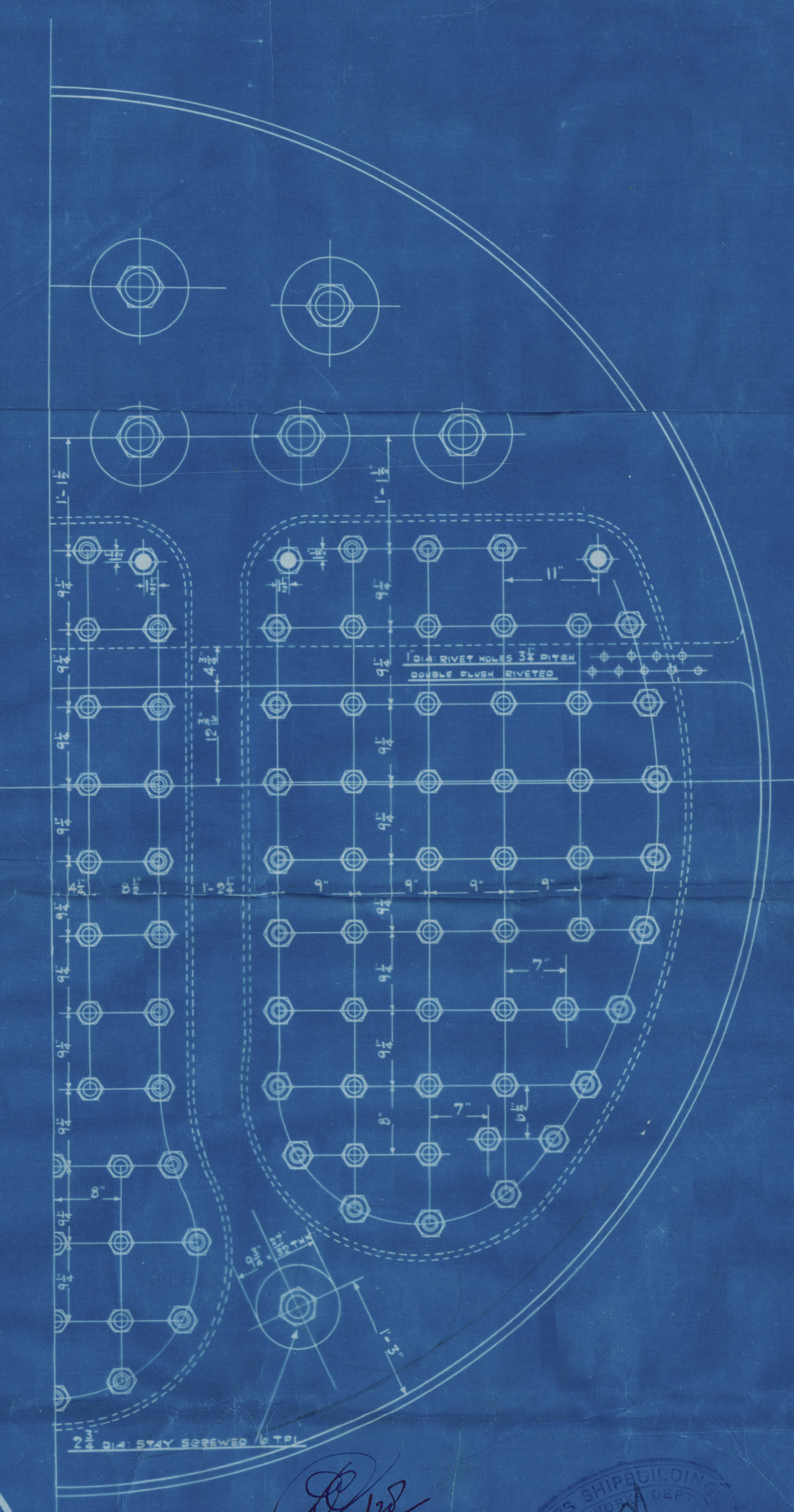
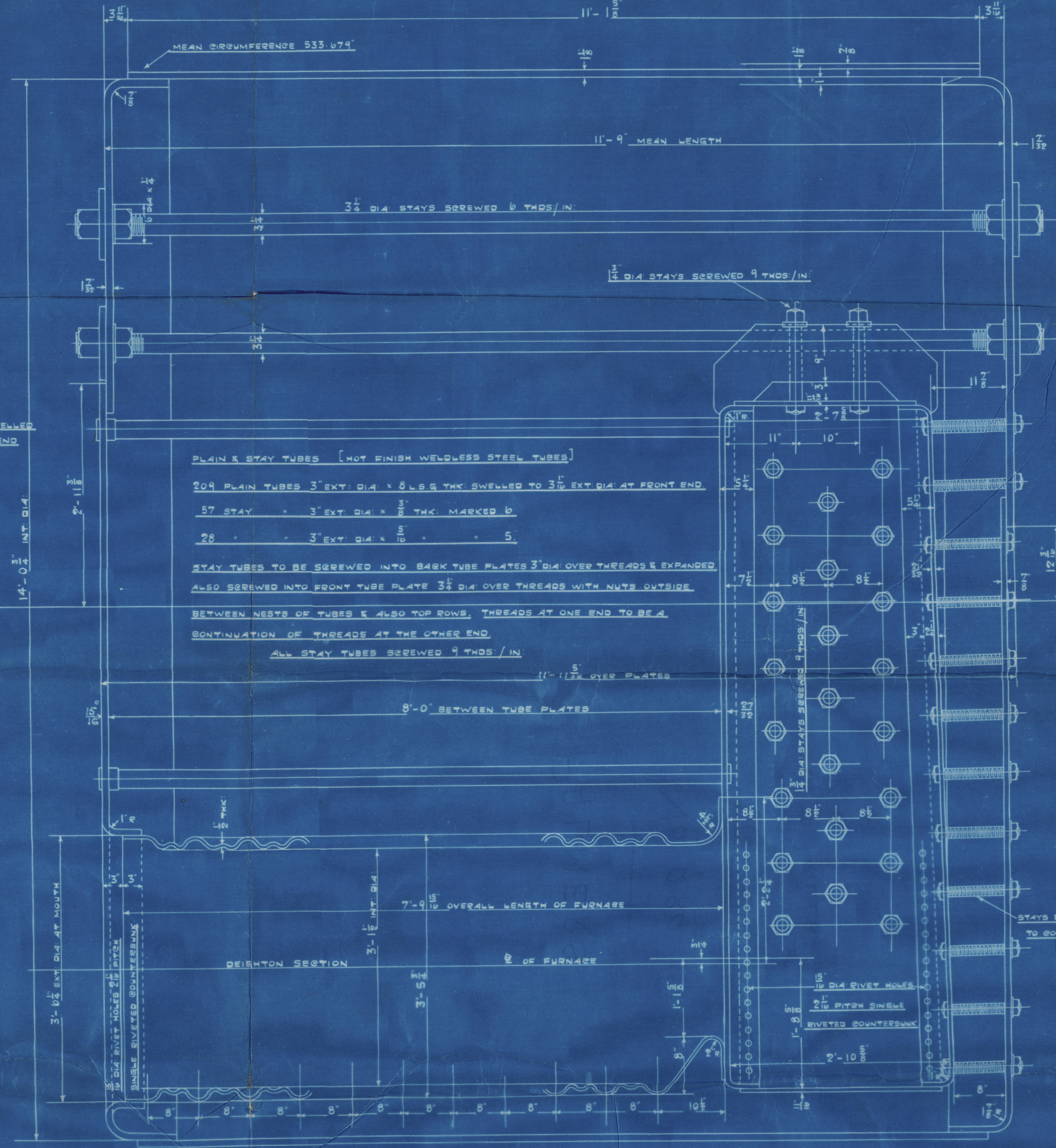
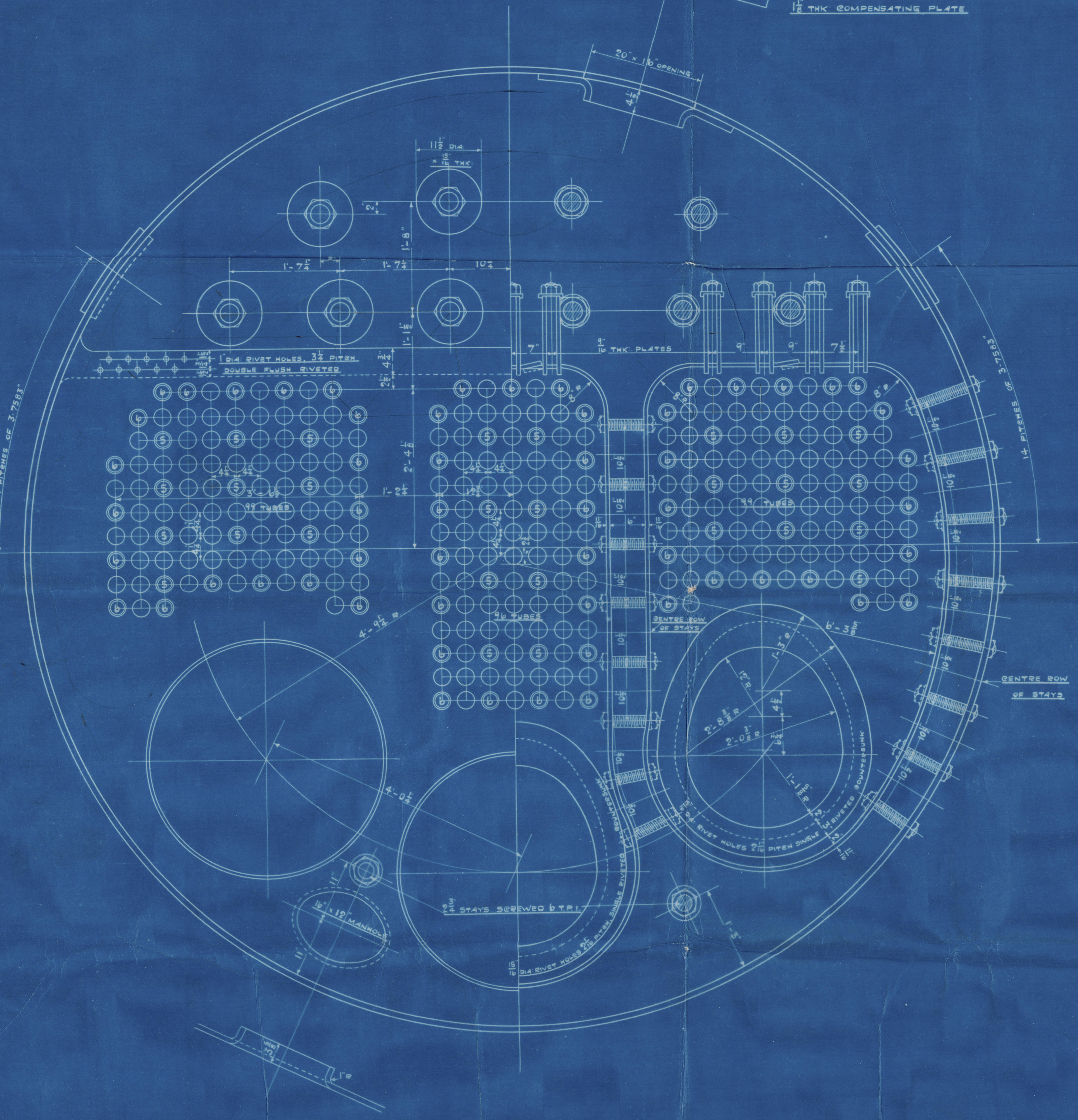
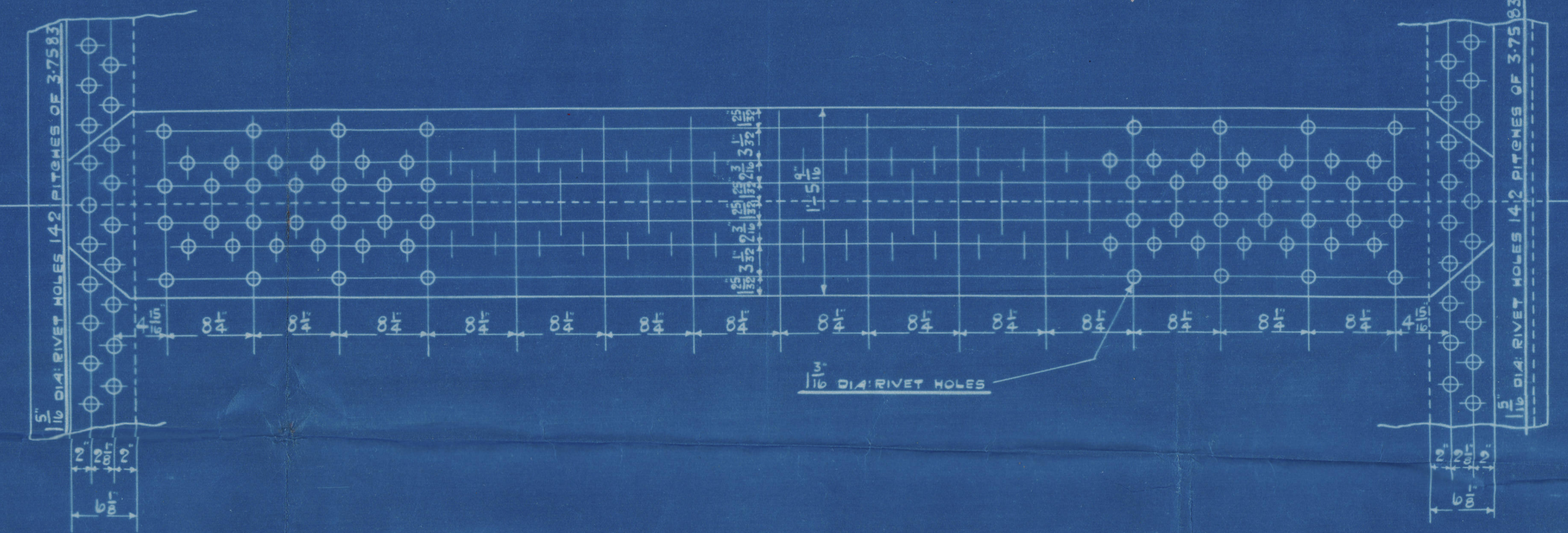
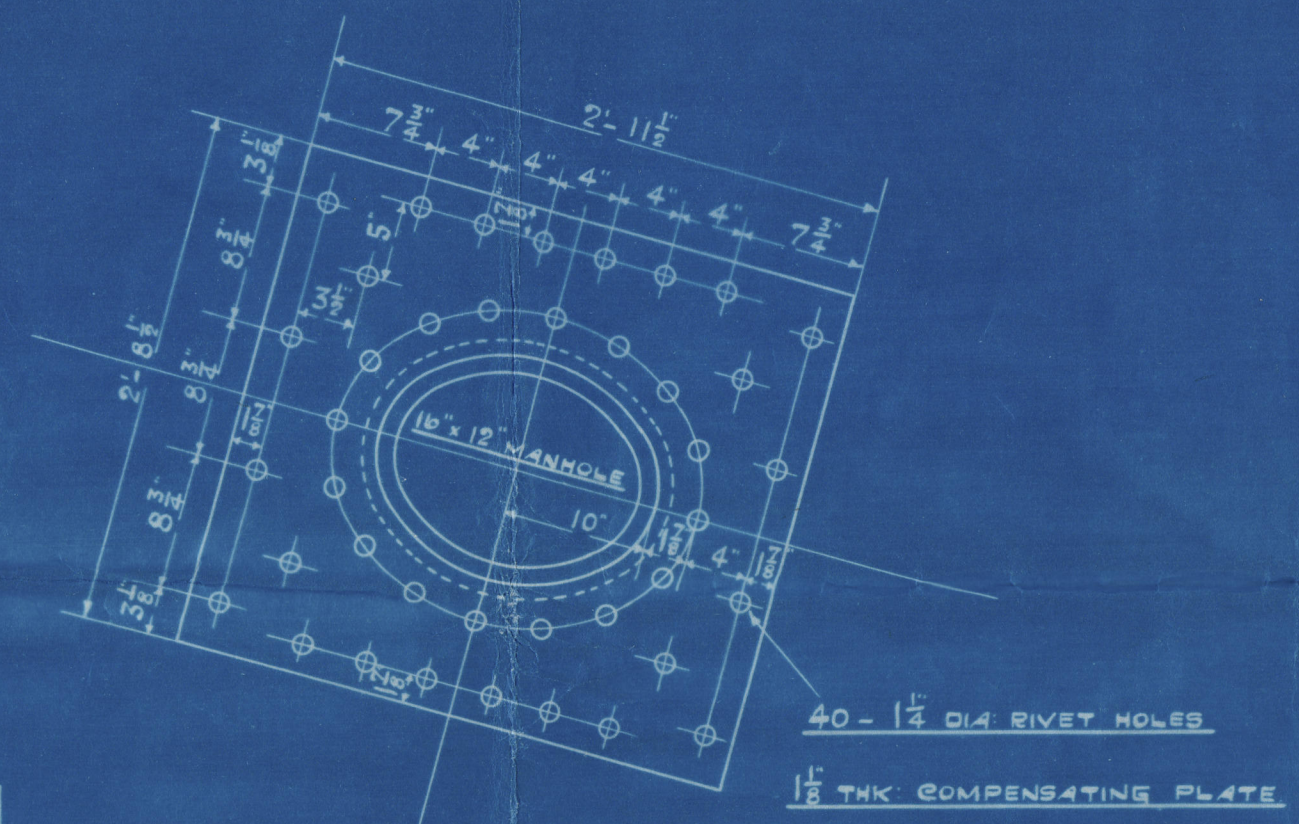
ALL PLATE EDGES PLANED & ALL RIVET HOLES TO BE DRILLED IN PLACE AFTER BENDING

COMBUSTION CHAMBER STAYS MARKED THUS: ● ARE 2" DIA. NUTS 1" THICK

○ ARE 1 1/2" DIA. NUTS 1" THICK

○ ARE 1 1/8" DIA. NUTS 7/8" THICK

ALL COMBUSTION CHAMBER STAYS SPOILED 9 THDS. / IN. & NUTTED AT EACH END



**MAIN BOILER** [1 - OFF.]

SCALE: 1" = 1' FOOT

ALL PARTS STEEL

TO LLOYDS REQUIREMENTS

CHARGED TO  
M.B.  
989

6/11/28

PLATE SHIPBUILDING CO. LTD.  
2-11-28

NR31294

ENG No 989



S. S. Stancosfalt.

NEW TYPE ON TYPE.

Report No. 84062

PALMERS

No 989

W.P. 180 LBS.<sup>□</sup>



84062  
© 2020

Lloyd's Register  
Foundation

W1060-0224